

At St Augustine's we have a small group of parents and caregivers who meet twice a term (currently via Zoom at 7pm) to discuss, provide feedback and make recommendations around parent and family engagement initiatives at our College. We call this group the **Family Engagement Core Group**.

Using *Parent and Family Engagement: An Implementation Guide for School Communities* as our primary source and supported by CEO staff member, Jenny Griffiths (Education Officer: Pastoral Wellbeing) we are informing ourselves about what parent engagement is and what best practice looks like in this area.

From our recent reading we would like to share with you the following learnings:

What is parent and family engagement? A definition...

Parent and family engagement in learning is the capacity of families, in partnership with schools, to support student learning and achievement by promoting interactions with children and young people that nurture positive attitudes towards learning, confidence as learners, and the development of subjective learning resources.

Key points

- When parents and families engage with their child's learning, attendance increases, behaviour in school improves, homework return rates go up and, overall, children's achievement tends to improve.
- Engaging parents and families in learning is an ongoing process.
- Children and young people learn 'anywhere, anytime.'
- What parents do is more important than who parents are.

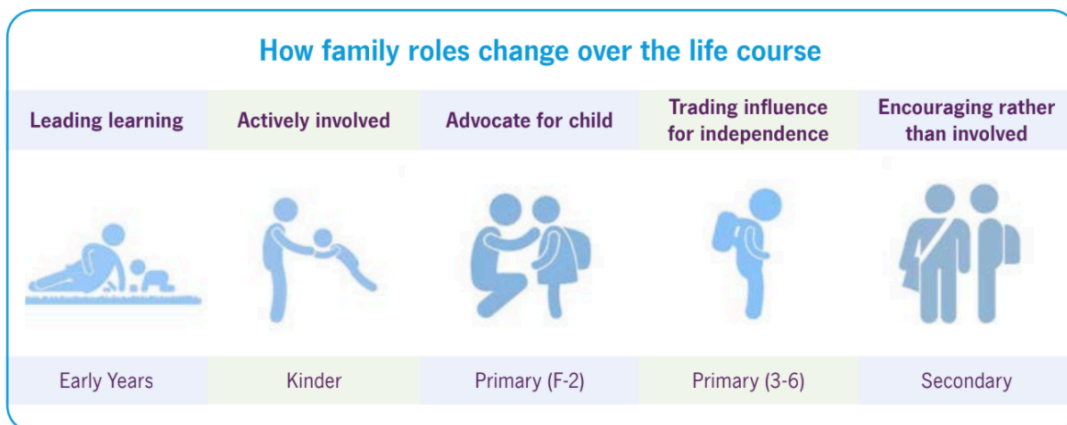


Figure 3: How family roles change over the life course (adapted from presentation to the 2017 Parent Engagement Conference "Engaging Families in Learning: A qualitative snapshot of how families and educators are supporting children's learning" (Murdoch Children's Research Centre and Parenting Research Centre))

Barker, B., & Harris, D. (2020). *Parent and Family Engagement: An Implementation Guide for School Communities*. Canberra: ARACY