

School Student Travel

Term 4 2023

2024 school travel applications are now open

Students who need a new or replacement School Opal card or travel pass for 2024 can [apply](#) now. A new application will need to be submitted if they are applying for the first time, or if they are requesting an additional travel entitlement because of a new shared parental arrangement (e.g. joint custody).

Students who change address, school, campus location, have repeated a year or received an expiry notification for their school travel entitlement should [renew or update](#) their details **before the end of term 4**. This will ensure that schools can endorse applications, and travel passes remain valid for the start of the 2024 school year. School Opal card holders will have the changes applied to their existing card.

If a student's distance eligibility has changed based on their grade (i.e. grade two to grade three), the system will automatically update their entitlement if they meet the new criteria. If they do not meet the new [eligibility criteria](#), we will send an expiry notification via email.

Students who have an entitlement approved under a medical condition that is due to expire will receive a notification advising them to re-apply.

[Term Bus Pass](#) holders will receive a notification to re-apply.

Students in the Opal network applying for an Opal card (including a Term Bus Pass) for the first time will receive their Student Opal card at their nominated postal address. Cards will be mailed out from January 2024.

Students living in rural and regional (R&R) areas should receive their travel pass at the start of the new school year from their nominated transport operator. It may come via the school or be sent directly to them at home. **Note:** some R&R operators do not issue travel passes. Students/parents should confirm with their nominated operator if they do not receive a pass.

Changes to your bus service provider

Within Greater Sydney, a number of bus service providers have changed their names.

Parents intending to lodge an application for a School Opal card will need to visit [transportnsw.info trip planner](https://transportnsw.info/trip-planner) to obtain the correct bus operator name servicing your area prior to lodging an application.

Travel from Term 1 2024

We ask that parents plan ahead and make sure their child knows which service/s to use and has a valid ticket to travel; either a School Opal card or Child/Youth Opal card (within Greater Sydney) or a School Travel Pass (outside Greater Sydney), from the start of the school year.

Applications for 2024 School Student Transport Scheme (SSTS) travel open at the start of Term 4 2023, so parents/students can [apply](#) or [update](#) details early and be ready for the start of the new school year.

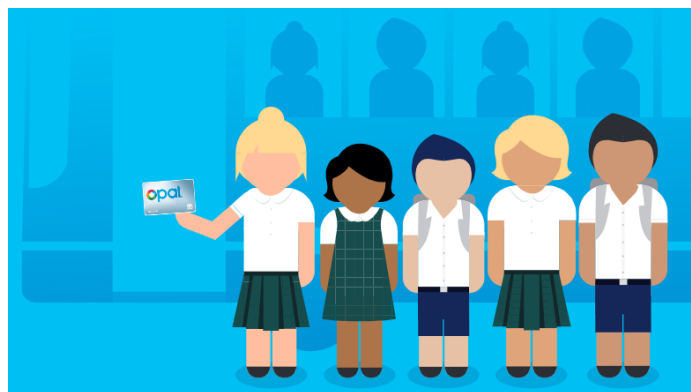
Most students using the Opal network will not need a new Opal card and can continue travelling on their existing card each year.

The start of the year is a busy period for local transport operators, and students travelling without a valid ticket make service planning and operations difficult.

We recognise that for some families last minute changes to school enrolments mean they may not have a School Opal card or Travel Pass for the start of term. In the Opal network, we strongly encourage these families to have their children travel with a Child/Youth Opal card until they receive their valid School Opal card. If outside Greater Sydney, parents should contact their [local bus operator](#) to discuss their travel needs.

Bus operators are flexible and understanding, particularly at the start of the school year, and will ensure students can travel safely to and from school. But to best support our operators we encourage all students to have a valid ticket, as early as possible, from the start of the school year.

Students using School Opal cards are also reminded that they must tap on and tap off in line with the [Student code of conduct](#) and [Opal terms of use](#).



Further information can be found at [Plan your trip to school | transportnsw.info](https://transportnsw.info/plan-your-trip-to-school)

Enquiries can be submitted at [Fares, concessions, tickets & top-up feedback | transportnsw.info](https://transportnsw.info/fares-concessions-tickets-top-up-feedback)