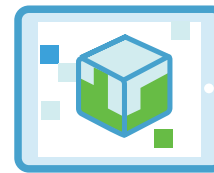


# Minecraft Education Edition Tips for Parents

Minecraft: Education Edition (EE) is a rich, collaborative, open, learning platform that supports curriculum-based learning. Please find a collection of top tips, suggested protocols and activity ideas for parents when supporting students using Minecraft:EE at home.



## Parent Quick Tips



### How to login to Minecraft

Your child will use their eduPass or school provided credentials to login to Minecraft: EE. If your child has not already installed Minecraft:EE on their device, please refer to the Quick Guide for Students using **Windows 10 and Mac OS or iPad**.

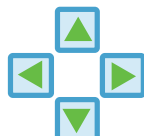


### Creating New, Import or View My Worlds

**Create:** You can create a world from scratch or by using a template. Select **Play, Create New** and select from **New or Templates**.

**Import:** There are worlds that have been created by other users that can be imported. To import the Mini Melbourne world, visit the **Fuse site here** and select **Download**. Once the world file has downloaded, open Minecraft: EE and select **Import**. Select the new **world file** from your downloads **folder**. Activity ideas for this can be found on the next page.

**View My Worlds:** Any worlds created or imported will be available in the **View My Worlds** option in Minecraft: EE. Any world can be saved and resumed at another time.



### Basic Controls

W	Move Forward
S	Move Backwards
A	Move Left
D	Move Right
Space Bar	Jump
E	Inventory
Esc	Pause Game
Move Mouse	Move mouse to view

On an iPad, touchscreen controls enable players to move and build.



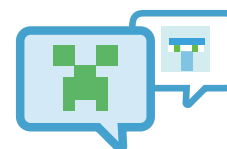
### Minecraft Settings

There are three **Default Game Modes** in Minecraft:EE

- **Survival** - This mode enables players to find materials to craft and survive. Players will get hungry and can take damage from falling, fire, drowning and hostile mobs.
- **Creative** - This mode provides unlimited resources. Players cannot get hungry, lose health or die in the game.

- **Adventure** - This is a restricted mode, allowing players to move, interact with levers, buttons and other items but they will not be able to place or destroy blocks.

During the game, players can change the **Default Game Mode** at any time by pressing **Esc** and selecting **Settings**. They can also change the **Difficulty Mode** if they are finding the game too easy or too challenging.



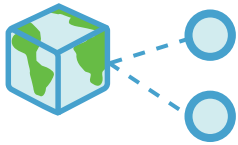
### Other Minecraft Terms

There are a few other terms in Minecraft that your child may use:

**Mob** - Any mobile object within the game. A mob can come in the form of animals such as cows, chickens and sheep. Other mobs can be hostile and will attack (survival mode only).

**Creeper** - Highly disliked and well-known mob that attempts to sneak up on a player and explode, causing damage to everything.

**Griefing** - Players in Minecraft causing grief to other players by destroying with fire, TNT, flood, lava or interfering with other players work.



## Join World

If your child's teacher is hosting a Minecraft world, they will share a unique joining code consisting of 4 symbols. When your child opens Minecraft: EE, they should select **Play, Join World** and enter the code provided.



## Protocols for Minecraft in Multiplayer

If your child is using Minecraft in multiplayer mode with their class teacher, they may already have established classroom online protocols. If your child is using Minecraft in a multiplayer mode at home, we encourage you to discuss with your child some protocols that will support them in using Minecraft safely and responsibly.

1. Be respectful and kind to others online. Do not damage other players builds and work.
2. Always keep your details private - do not share personal information with others online.
3. Help others who ask for assistance - share your knowledge and skills.
4. Be kind and do not attack or hurt other players deliberately.
5. Use appropriate and respectful language when communicating with others.
6. If another player is doing something that is upsetting or is making you feel uncomfortable, please tell a responsible adult such as a parent or teacher.

## Learning from home activity ideas

### Minecraft Instructions

Ask your child to create instructions for you or a sibling outlining how to use Minecraft. They could do this on paper or could create in-game instructions. Once your child has completed this activity, follow their instructions and test their accuracy.

### Create a rainbow

Add a splash of colour to your Minecraft world by asking your child to build a rainbow.

They may want to plan this build on grid paper before building in Minecraft.

If you would like to print their final product, ask your child to take a photo of their work using the **Camera** in their **Inventory**. Once they have taken a photograph, they can then access their **Inventory** and search for **Portfolio**. They will find any pictures they have taken inside their **Portfolio**. This can then be exported and saved as a pdf on your computer.

### Recreate your favourite character/setting from a book or historical moment

Use blocks in Minecraft to build a model of their favourite character or setting from a book/historical moment.

They may benefit from planning the build on grid paper first before building in Minecraft. Ask your child to add a **Board, Slate** or **Poster** and add key facts about the character/setting they have chosen.

### Mini Melbourne

The Department of Education and Training and the Metro Tunnel Project collaborated to create the **Mini Melbourne** world. Your child can download the Mini Melbourne world **here** and explore Melbourne CBD in Minecraft: EE. Students can fly above the city and explore Flinders Street Station, Federation Square, St Paul's Cathedral as well as other famous streets and landmarks. Send your child on a Scavenger Hunt of the city and record their findings using the **Camera** and **Portfolio**. A list of items to find in Mini Melbourne can be found **here**.

### Minecraft: EE Challenges

Build Challenges are available on the **Minecraft:EE** site for your child. The challenges can be completed with others or individually.

### Hour of Code

Your child can learn the basics of coding using Minecraft:EE. In this activity, your child will program a Minecraft Agent to collect information about forest fires. The world file for this activity can be downloaded **here**.

### If you don't have access to Minecraft at home

#### Alternative activities:

- Use grid paper to create plans for a Minecraft build that can be created on return to school
- Draw plans using paint or pencil on paper
- Use Lego or building blocks to create builds
- Use craft equipment or Lego to create models

Keep evidence of models or images produced so that your child can share these with their teacher when they return to school.