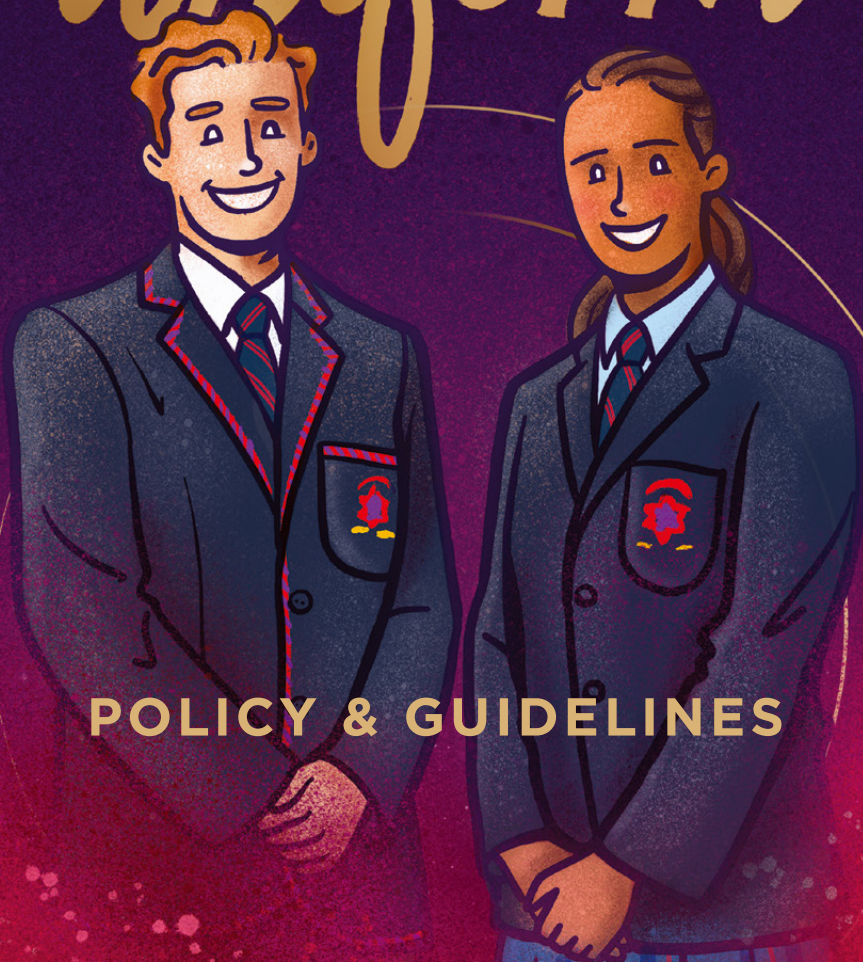


uniform



POLICY & GUIDELINES



ST JOSEPH'S
COLLEGE MILDURA

the College uniform

THE COLLEGE UNIFORM IS A SYMBOL OF THE COLLEGE AND A PUBLIC DECLARATION OF ITS VALUES, STANDARDS AND BELIEFS.

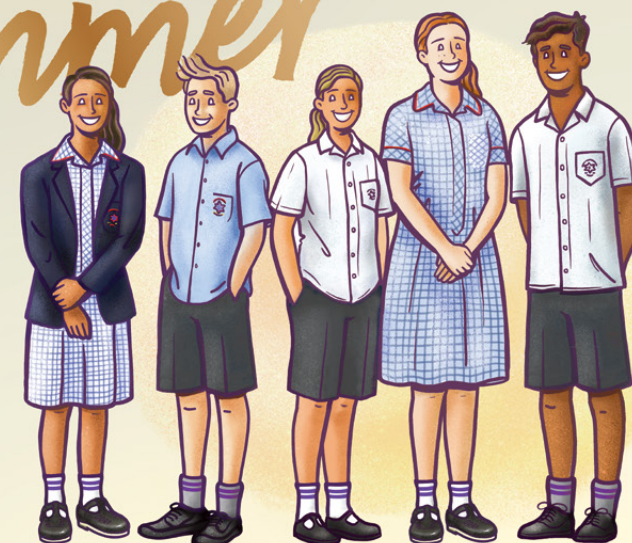
IT CREATES A SENSE OF COLLECTIVE AND INDIVIDUAL PRIDE IN STUDENTS AND THEIR IDENTIFICATION WITH THE COLLEGE.

IT IS A SYMBOL OF EQUALITY AMONG STUDENTS AND DEMONSTRATES MUTUAL RESPECT.

UNIFORM EXPECTATIONS

- Students must be in college uniform, as defined in the Uniform Policy at all times when travelling to and from school, and at school unless indicated otherwise. This includes when participating in school excursions.
- Students are expected to be neat and tidy and wear their uniform with pride.
- No clothing visible under the uniform is to be worn, including t-shirts with logos.
- Uniforms are not to be drawn on or vandalised in any way.
- Whenever the uniform is worn in the public domain, it must be complete.
- Students are expected to be well groomed in appearance at all times when wearing the college uniform. When an item of uniform is missing, a student must carry a note from a parent explaining the reason and indicating a time (usually within 24-48 hours) when the item will be replaced/repaired.
- The college reserves the right to determine what is an appropriate application of the dress code and uniform requirements.

summer



MALE STUDENTS

- Grey college shorts OR
- Grey college trousers
- College blue shirt (short- or long-sleeved)
Years 7-10 (with logo)
- College white shirt (short- or long-sleeved)
Years 11-12 (with logo)
- College grey socks with double purple bands
- Black belt (plain) (optional)
- Black leather shoes (standard heel, smooth leather upper)
- College all weather jacket (optional)
- College bag
- College hat

FEMALE STUDENTS

- College Summer dress (at or below the knee)
- Navy college shorts (at least mid-thigh length and loose fitting) or navy college slacks
- College blue shirt (short- or long-sleeved)
Years 7-10 (with logo)
- College white shirt (short- or long-sleeved)
Years 11-12 (with logo)
- College white socks with double purple bands
- Black leather school shoes, lace up or Mary Jane style with cross-over strap (standard heel, smooth leather upper). No soft jazz type shoes
- College all weather jacket (optional)
- College bag
- College hat

Note: The college jumper (Navy Years 7-10 or Maroon Years 11-12) or college blazer may be worn as the outer garment.

winter

TERMS 2 & 3



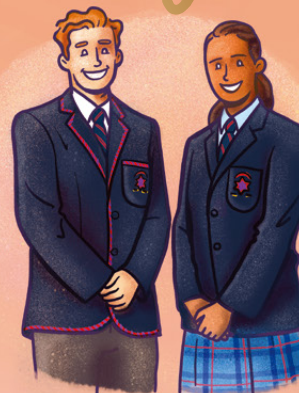
MALE STUDENTS

- College blazer
- Grey college trousers
- College navy jumper – Years 7-10 (optional) or maroon jumper – Years 11-12 (optional)
- College blue long-sleeved shirt Years 7-10 (with logo) tucked in
- College white long-sleeved shirt Years 11-12 (with logo) tucked in
- College tie
- College grey socks with double purple bands
- Black belt (plain) (optional)
- Black leather shoes (standard heel, smooth leather upper)
- College all weather jacket (optional)
- College bag
- College scarf (optional)

FEMALE STUDENTS

- College blazer
- College tartan skirt (at or below the knee)
- College tailored slacks
- College blue long-sleeved shirt Years 7-10 (with logo) tucked in
- College white long-sleeved shirt Years 11-12 (with logo) tucked in
- College navy jumper – Years 7-10 (optional) or maroon jumper – Years 11-12 (optional)
- College tie
- Navy knee length socks or navy opaque tights
- Black leather school shoes, lace up or Mary Jane style with cross-over strap (standard heel, smooth leather upper) No soft jazz type shoes
- College all weather jacket (optional)
- College bag
- College scarf (optional)

blazers



THE COLLEGE BLAZERS

The College blazer must be worn as the outer garment to and from school and to morning Homeroom during Terms 2 and 3 except on days as determined by the college, e.g. heat rule option when predicted temperature is 30 degrees celsius or above (as per Bureau of Meteorology) at afternoon dismissal.

It is compulsory for students to wear the college blazer to all college assemblies that occur in Terms 2 and 3, and for any special occasions e.g. Awards Night, Opening Mass, End of Year Mass and as directed by the college.

SUNSMART POLICY

The college hat is compulsory during the summer months (Terms 1 and 4) when a student is outdoors for any prolonged period of time, including recess and lunch. Hats are compulsory for all outdoor/PE activities in Terms 1 and 4.

sportswear



MALE & FEMALE PE WEAR

- College navy PE polo shirt
- College navy PE shorts
- White above ankle socks – no logo
- College tracksuit pants
- College tracksuit jacket or College rugby top
- College dance and PE leggings 3/4 and full length (optional). These are to be worn as an undergarment only i.e. under PE shorts or tracksuit pants, not on their own.
- College hat
- Non marking lace up sports shoes (no Vans or canvas shoes)
- A drawstring bag to hold PE uniform items from locker to change room

shoes

For adequate protection, school shoes must have standard heel size and smooth, structured leather upper which encloses the entire foot. Shoes made from open-weave materials such as canvas do not provide adequate protection or support and are not permitted. Sports and P.E. shoes have similar restrictions. These must be non-marking and provide suitable support and grip for a range of sports activities. Casual shoes are not permitted.

PERMITTED NOT PERMITTED



grooming

MAKE UP

Students are not permitted to wear visible makeup. Coloured nail polish/ nail extensions are not to be worn.

JEWELLERY

Please find below pictured examples of acceptable earrings that students may wear to the college. Any other visible piercing of any form is not permitted. Only one sleeper or stud is permitted in each lower ear lobe. Clear plastic plugs or Band-Aid coverings are not acceptable. One chain with a religious symbol may be worn (no other visible chains, cords or necklaces). No rings, wrist adornments such as bangles/bracelets or anklets. A wristwatch is allowed.



CORRECT EARRINGS

- Small plain spherical gold/silver studs
- Small round sleepers



INCORRECT EARRINGS

- Jewel studs
- Coloured gemstone studs
- Pearl studs
- Hoop earrings
- Huggie earrings
- Disc earrings

HAIRSTYLES

Hair, in general terms, must be clean, neatly styled, natural in colour and tied back off the face at all times when travelling to and from school, and at school. Hair accessories must be discreet (functional rather than ornamental), small and plain in college colours (navy, white red or maroon). Hairstyles which are outside of the following guidelines are unacceptable:

- Hair which is shoulder length or longer must be tied back at all times so that the hair does not touch the collar. No hair should be allowed to fall across the face or cover the eyes.
- Extreme hairstyles (e.g. dreadlocks, close-shaven) are not permitted.
- Hair must be of a natural colour. Moderate and discrete variations in natural colour such as highlights, tips and streaks are permitted as long as the overall style is predominantly of a single, natural colour without major contrasts. Unnatural hair colours are never permitted.
- All male students must be clean shaven at all times. Sideburns must not be below the level of the ear.
- Cutting lines into or shaving eyebrows is not permitted.

KEEPING A tidy appearance

LOOK SHARP & BUTTON UP

Button your shirt all the way up and secure your tie in a neat knot at the top button.



CORRECT



INCORRECT

TUCK YOUR TAILS

Tuck in your shirt all the way around at all formal events and whenever you wear the winter uniform.



CORRECT



INCORRECT

CLASSIC STYLE

Keep your skirt sleek by wearing the hem only as high as your knees and never roll or adjust the hem to a shorter length.



CORRECT



INCORRECT

SPICK-AND-SPAN STYLE IS EASY WHEN YOU WEAR YOUR ST JOSEPH'S COLLEGE UNIFORM. KEEP YOUR APPEARANCE SHARP WITH THESE TIDY GUIDELINES.

For more information contact 5018 8095
or uniformshop@sjcmda.vic.edu.au

**OUR UNIFORM SHOP IS LOCATED AT
97-99 LIME AVENUE, MILDURA**

For further information refer to the Student Uniform Policy
which is available on the college website. www.sjcmda.vic.edu.au

Copyright © 2021 of St Joseph's College, Mildura. All rights reserved.

