

Lyndhurst Primary School

*A great state school serving
the Lyndhurst community.*



July 2010

Issue 1: In the beginning



Meet the new Principal: Greg Lacey



Inside

Frequently asked questions
Answers to questions that
parents have been asking.

What sort of school will it
be?

Some information on what
you can expect from
Lyndhurst Primary School

My name is Greg Lacey and it is my privilege to have been appointed as inaugural Principal of Lyndhurst Primary School, a new state government primary school currently being built to open in 2011. For the last ten years, I have been Principal of Tyabb Primary School on the Mornington Peninsula and prior to that I was Assistant Principal of Courtenay Gardens Primary School in Cranbourne. In fact, I was a teacher at Courtenay Gardens from the day the school opened so I have been through the incredible experience of beginning a new school before. I have been in state education since 1979 and taught in a wide range of schools in the south-eastern and southern suburbs. Opening a brand new school is certainly the highlight of my career so far and I am very excited about working with the Lyndhurst community to build the kind of school of which we can all be proud.



This picture is of another of the Public - Private Partnership (PPP) schools being built in Victoria.

Lyndhurst Primary School will look very similar to this.

FAQ's: What do you want to know about Lyndhurst Primary School?

If you have a question why not drop us an e-mail at: lyndhurst.ps@edumail.vic.gov.au

What's a Public – Private Partnership?

Lyndhurst Primary School, like several other schools around the state, is part of a new partnership agreement between the Victorian State Government and Axiom Education, a private consortium. Whilst Axiom and its partners are responsible for the construction and on-going maintenance of the school facility, in every other respect, Lyndhurst is a state government primary school. In essence, the Department of Education and Early Childhood Development (DEECD) lease the property from the private consortium over a 25 year lease period. The huge advantage from my point of view as Principal, is that we have the use of a beautifully designed, purpose-built school, the quality and standard of which is guaranteed under the partnership agreement and I can spend my time on the really important issues around the education of your children.

Will Lyndhurst Primary School open in 2011?

Lyndhurst Primary School will open for term 1, 2011. Enrolments are being taken now for years Prep – 6. Enrolment details can be found elsewhere in this newsletter.

What year levels will Lyndhurst open with?

Lyndhurst will open for years Prep -6.

Will there be Before and After School Care?

At this stage we are planning to have before and after school care. Further details will be given to parents as negotiations progress.

How do I enroll at Lyndhurst PS?

All enrolment details are shown elsewhere in this newsletter.

Is there a kindergarten planned for the local neighbourhood?

A kinder facility for the Marriott Waters Estate is on capital works planning but an opening date is not known.



Lyndhurst PS How do I enroll?

The following are all required to complete enrolment:

- Completed Student Information Forms
- Copy of Birth Certificate
- Immunisation Certificate

Enrolment forms and documentation can be handed in to our host school at:

Cranbourne Carlisle
Primary School
15 Silky Oak Drive
Cranbourne, 3977

Or posted to:

Lyndhurst Primary School
PO Box 7138
Cranbourne North, 3977

FAQ continued

What about Lyndhurst's School Council?

An Interim School Council will be established during 2010 and this will remain in place until elections are held for the 2012 School Council. Parent volunteers will be sought to serve on the council. If you are interested in joining the interim School Council of Lyndhurst PS, please send me an e-mail listing your name, contact details, names of students attending Lyndhurst PS, your occupation and any relevant information regarding the potential contribution you could make to the effective running of the council, eg former School Councillor at school, financial experience, committee memberships.

Will there be parent meetings?

Later in the year, there will be a public meeting for all families and interested community members so that we can begin the process of getting to know each other. I also intend making time to meet with all families individually over the next few months. Meetings will probably be held at Cranbourne Carlisle Primary School, which is very similar in design and features to Lyndhurst. Cranbourne Carlisle PS is currently my host school. This will give parents a chance to see what Lyndhurst will look like once construction is completed.

What about the curriculum?

The curriculum at Lyndhurst will of course be based on the Victorian Essential Learning Standards (VELS), which is expected of all government schools in Victoria. The early years program (Prep-2) will be based on Kathy Walker's play-based learning system. This play-based learning is strongly focused on providing children with a strong foundation of essential literacy and numeracy skills through utilising a child's natural propensity to learn through play to engage them. At the higher levels (year 3-6), children will be gradually moving to an "inquiry-based" curriculum along the lines of the work of Kath Murdoch. Inquiry based learning is all about building lifelong learners. It is focused on giving children the skills and abilities to be able to increasingly take control of their own learning and to give them time to study, learn and think more deeply.

What sort of school will Lyndhurst Primary School be?

A school for the community

More than the location, the facilities and the resources in a school, it is the people that give it life and define its character. In an environment in which teachers work in a supportive, respectful workplace, where students are engaged in meaningful and relevant learning tasks in safe and encouraging surroundings and where parents can constructively participate in an inclusive, welcoming school, real education can take place, not only for each child but on a broader community level. Lyndhurst Primary School will be a school that includes and embraces its local community. We will welcome the contributions that parents and the community can make to the education of our children and the facilities and resources of the school will be available to the community as a shared resource that benefits all.

A school of three strong cultures

At Lyndhurst, I want to build three active cultures that intertwine to create an environment that encourages success in student learning and academic results as well as high standard student interactions and behavior.

The first culture is one of ***high expectations of the students***. High expectations by teachers of their students will be translated into high expectations of the school by parents. The Lyndhurst community should have high expectations of our school which reflect their high aspirations for their children. This will be a key ingredient in our success as a school. Building an aspirational community will engender a culture of high expectations and high achievement.

The second culture is one of ***high expectations by teachers of each other***. I believe that, to all members of our staff, it should mean something significant to work at Lyndhurst PS. I want to engender a community that respects and admires the commitment of the members of staff and this, in turn, will build an environment where all members of staff feel appreciated and thus more willing to add discretionary effort. In a culture such as this, there is an expectation amongst staff that all will contribute in a significant way to the accomplishments of the school and all will share in the pride of the resulting success.

The third critical culture is one in which ***students have high expectations of each other***. This essential element is crucial in maintaining an orderly learning environment and encouraging high levels of achievement. There will be a high standard of behaviour that is not only expected of the students but that students have a right to expect of each other. There will be standards of interaction that are respectful and courteous. There will be standards of commitment to their schooling and motivation to learn that will be constantly in evidence.

I relish the opportunity to build a school at Lyndhurst that provides support, encouragement, and growth opportunities for staff and which is characterized by high student motivation to learn and high teacher motivation to teach and to continue to learn. This will be a school in which the whole community can participate and of which the whole community can be proud.



Lyndhurst PS

By reaching out to make neighbourhood connections with homes, businesses, the environment and local institutions, Lyndhurst Primary School can:

- offer real world, rigorous, interdisciplinary learning experiences
- provide facilities custom-designed for learners of the 21st Century
- be a school characterised by the laughter and smiles of children
- wholly engage children and the community in the process of learning
- prepare children to be happy, caring and productive adults
- develop adaptable and resilient individuals
- encourage respect for themselves, others and the environment



Lyndhurst Primary School newsletter

Issue 1: In the beginning

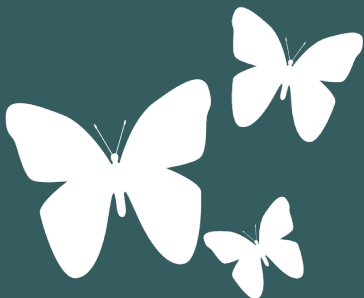
Contact us:

Brookwater Parade
Lyndhurst, 3975

Principal: Greg Lacey
Phone: 0416 679 836

PO Box 7138
Cranbourne North, 3977

lyndhurst.ps@edumail.vic.gov.au



In the next edition...

- We should have some information on uniforms.
- I'm hoping to have some details about books and stationery supplies.
- What specialist programs will be run at Lyndhurst?
- More answers to your Frequently Asked Questions
- How is the building progressing?
- How are enrolments progressing?
- A little more detail about the facilities at Lyndhurst.
- More details on family meetings.

