



### Dates to Diarise in Term 3

- **University / TAFE Open Days 2022** – throughout August
- **Year 12 VTAC timely applications** – throughout August and September
- **VTAC SEAS and Scholarship applications** – throughout August and September



### Talk with Industry Series

*Join us online to hear from ACU alumni about their professional experiences after completing their studies at ACU. Take part in a Q&A session with our graduates to find out what your future could hold with one of our degrees.*

Students keen on studying careers in the **allied health and youth industry** are invited to register for one or more of the upcoming 'Talk with Industry' webinar series.

<b>Youth Workers and Social Workers</b>	Tuesday 13 September, 6.00pm- 7.00pm
<b>Psychologists</b>	Wednesday 14 September, 6.00pm- 7.00pm
<b>Nurses and Midwives</b>	Wednesday 5 October, 5.00pm – 6.00pm AEST
<b>Paramedics</b>	Thursday 6 October, 5.00pm – 6.00pm AEST
<b>Occupational Therapists and Speech Pathologists</b>	Tuesday 18 October, 5.00pm – 6.00pm AEST
<b>Exercise Scientists and Physiotherapists</b>	Wednesday 19 October, 5.00pm – 6.00pm AEST

Register at [Talk with Industry Series](#) and also watch recordings of earlier webinars that have taken place.

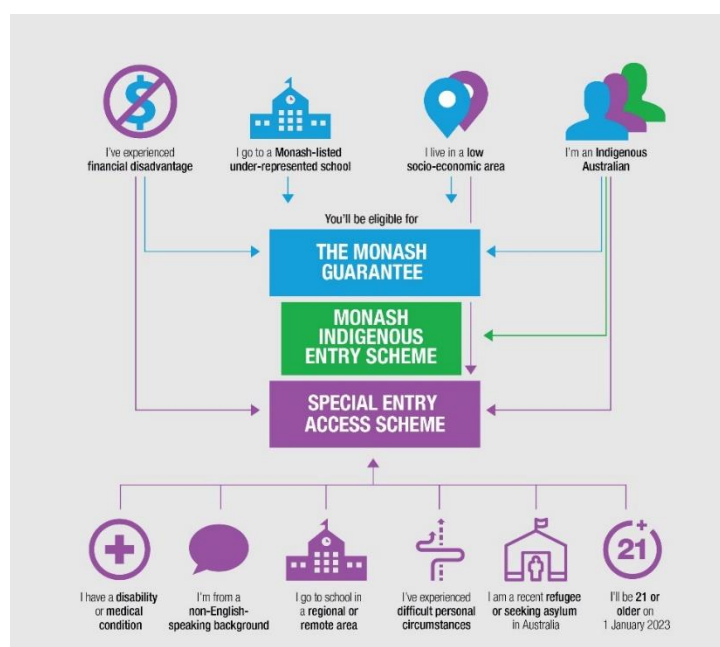
## Monash Entry Schemes – Domestic Students

At Monash, we know that a student's ATAR might not accurately reflect their ability. Life can be a bumpy road, and there are all sorts of circumstances that can get in the way of a student's academic achievement.

We offer two schemes – the Monash Guarantee and the Special Entry Access Scheme (SEAS) – that can help students enter their preferred course, even if their ATAR is below the lowest selection rank.

By having two schemes, Monash wants to create a level playing field for everyone who aspires to an exceptional education. By operating both schemes, Monash can also help as many students as possible reach their full potential.

**Students do not have to choose between the two schemes – depending on their situation and background, they could be eligible for one or both.**



### 1. The Monash Guarantee

The Monash Guarantee can get a student into a Monash course even if they do not reach the course's lowest selection rank. Students could be eligible for the Monash Guarantee if they:

- have experienced [financial disadvantage](#)
- live in a [low socio-economic area](#)
- are an [Indigenous Australian](#)
- attend a [Monash list under-represented school](#)

Every Monash undergraduate degree has a [Monash Guarantee ATAR](#), which is lower than the expected selection rank for that course. For most courses, if a student meets the [eligibility criteria](#), achieves the Monash Guarantee ATAR (starting at 70.00), and completes all course prerequisites, they will be eligible for a place at Monash. **To be**

considered for the Monash Guarantee, Year 12 students must *submit a VTAC course application, complete a Special Entry Access Scheme (SEAS) application, including Category 1, and submit any required documentation.*

Find out more at [The Monash Guarantee](#).

## 2. Special Entry Access Scheme (SEAS)

SEAS adjusts a student’s ATAR in recognition of circumstances that may have affected their education. This gives students a better chance of getting an offer for the course they want. Students receive ATAR-related adjustments depending on the severity of their circumstances. The adjustments are made to your combined study scores and your ATAR is recalculated. Monash then uses this adjusted ATAR for selection into a course.

Find out more at [Monash SEAS](#).



## News from the University of Melbourne

### ➤ Guaranteed Study Pathways

The following entry guarantees, and packages are available to students applying for entry to Melbourne undergraduate degrees. For each pathway, students must enrol in an undergraduate degree at the University of Melbourne to be eligible. A guaranteed entry is available for most graduate degrees, depending on the ATAR a student achieves:

<b>ATAR of 99.90 Melbourne Chancellor’s Scholarship</b>	<p>A Guaranteed Commonwealth Supported Place in one of the <a href="#">Graduate Course Guarantee Courses</a> for students who meet the prerequisite course and entry requirements for the master degree.</p> <p>Visit <a href="#">Melbourne Chancellor's Scholarship</a> to find out more specific details about the exact value of the scholarship for domestic and International students.</p>
<b>ATAR of 96.00 – 99.85</b>	<p><u>Domestic students</u> will be guaranteed a CSP place in a professional entry master’s (coursework) degree from a select list if they satisfy the course prerequisites. In most cases they need to achieve a particular weighted average mark (GPA) in their undergraduate degree as well. <u>International students</u> will be guaranteed an international fee place in a professional entry master’s (coursework) degree from a select list if they satisfy the course prerequisites. In most cases they need to achieve a particular weighted average mark (GPA) in their undergraduate degree as well.</p> <p>Visit <a href="#">Courses for ATARs 96 and above</a> to find out which courses apply and the exact GPA required.</p>
<b>ATAR below 96.00</b>	<p>These guaranteed entry pathways into limited graduate courses are based on academic performance in a current University of Melbourne undergraduate degree and are not subject to any ATAR requirement. Eligibility will also be based on meeting the prerequisites for the graduate degree.</p> <p>Visit <a href="#">Course Guarantees without an ATAR</a> to find out more.</p>

Find out more at [Guaranteed Entry to Graduate Degrees](#) and [Graduate Degree Packages](#) to learn more.

➤ **Guaranteed ATARs for 2023**

The university is offering school-leaver applicants the assurance of guaranteed ATARs for entry into many of its undergraduate courses. The guaranteed ATARs aim to provide students with comfort and assurance, allowing them to prepare for life and study at the University of Melbourne in 2023. Guaranteed ATARs are applicable to domestic and international students.

To be eligible for guaranteed entry, applicants must also meet the following requirements:

- Satisfy all course prerequisites and achieve the ATAR (or notional ATAR) outlined in the table below
- Apply to their preferred undergraduate course at the University via VTAC

UNDERGRADUATE DEGREE	DOMESTIC STUDENT	INTERNATIONAL STUDENT
	2023 MINIMUM ATAR	2023 GUARANTEED ATAR
Bachelor of Agriculture	72.00	70.00
Bachelor of Arts	88.00	85.00
Bachelor of Biomedicine	95.00*	95.00*
Bachelor of Commerce	93.00	92.00
Bachelor of Design	88.00	85.00
Bachelor of Oral Health	n/a	85.00 (indicative only)
Bachelor of Science	88.00	85.00

\*Pending approval by Academic Board

Note: selection into the following degrees is not ATAR-based but based on a range of selection criteria – *Bachelor of Fine Arts* and *Bachelor of Music*.

➤ **Entry for Design Graduate Packages for 2023**

The Design Graduate Degree Packages have been revised for 2023 entry for both domestic and International students and guaranteed for 2023 only:

Bachelor of Design + Master of Architecture	97.00
Bachelor of Design + Master of Property	95.00
Bachelor of Design + Master of Landscape Architecture	95.00
Bachelor of Design + Master of Construction Management	95.00
Bachelor of Design + Master of Urban Planning	95.00
Bachelor of Arts + Master of Urban Planning	95.00

➤ **Access Melbourne**

[Access Melbourne](#) is a special entry and access scheme offered by the University of Melbourne to domestic students. By applying through Access Melbourne, students can be assured that any circumstances that have affected their education will be considered when the university assesses their Year 12 results. Access Melbourne can assist eligible students to enter a course even if their ATAR is below the lowest selection ranked ATAR and to also be considered for a Melbourne Access scholarship. Access Melbourne consideration is available to domestic Year 12 students who apply for Special Entry Access Scheme (SEAS) via VTAC. The closing date for submissions is 7 October 2022.

## Year 12 students can apply using one or more of the following categories:

- Disadvantaged financial background
- Resident of a rural or remote area (includes low socio-economic residential areas)
- First in Family
- Under-represented school
- Difficult circumstances
- Disability or medical condition
- Non-English-speaking background
- Recognition as an Indigenous Australian

## Access Melbourne categories that provide a guaranteed ATAR for entry are:

1. Disadvantaged financial background (includes low socio-economic residential areas)
2. Applicants from rural or remote areas

Students eligible to apply as a rural or financially disadvantaged student, and meet course prerequisites, may apply for guaranteed entry to the University of Melbourne with an -

ATAR of 74.00 for a place in Arts, Design or Science

ATAR of 80.00 for a place a place in Commerce

ATAR of 88.00 for a place a place in Biomedicine

The University also offers guarantees for [Indigenous students](#) who meet course prerequisites and apply with an ATAR of:

- 50.00 Arts (Extended)
- 55.00 Science (Extended)\*
- 74.00 Arts
- 75.00 Commerce
- 70.00 Design
- 74.00 Science
- 85.00 Biomedicine

\*Applicants for guaranteed entry to the Bachelor of Science (Extended) *also require a study score of 25 in at least one of:*

*VCE unit 3/4 in Biology, Chemistry, Physics, or any Mathematics, or equivalent*

There are also several *Melbourne Access scholarships* available through the University's scholarships program, so students are encouraged to browse [Melbourne Access Scholarships](#).

### **Study Score Consideration and VTAC Personal Statement**

In 2023, the university will consider criteria in addition to the ATAR for eligible students who are Access Melbourne applicants (from categories: *disadvantaged financial background, resident of a regional or remote area, difficult circumstances, disability or medical condition*).

Access Melbourne students who attain a lower ATAR but achieve a study score of at least 35 in at least one VCE 3/4 subject that is relevant to their course preference, may submit a [VTAC Personal Statement](#) highlighting their career ambitions, outlining the future benefits for the community they hope to achieve, and their motivations for participating in higher education study at Melbourne.

Students must also meet course prerequisites, and achieve an ATAR of at least:

- 72.00 for Arts, Design, or Science
- 78.00 for Commerce
- 86.00 for Biomedicine

Browse [Study Score Consideration and VTAC Personal Statement](#) noting which VCE subjects are eligible for consideration here.



### **Experience ADFA – Open Day 2022**

Students keen on finding out more about ADFA but cannot attend the Open Day on 20 August 2022, are invited to still experience the action at the **Virtual Open Day**. Students will -

- hear from ADFA Commandant, Air Commodore Jules Adams CSC, to learn more about ADFA and how to get the most out of the virtual open day
- hear from ADFA trainee officers, alumni, and UNSW staff about life and studying at ADFA
- explore UNSW degrees, with Information Sessions on Business, Science, Engineering & IT, and Humanities and Social Sciences
- participate in live Q&As and get all your questions answered
- take a virtual tour of the campus, and much more

Students may register their interest at [Experience ADFA](#) and be the first to hear about what's happening for ADFA Open Day 2022.



### **Upcoming Open Day Events**

#### ➤ **RMIT Flight Training and Aviation Open Days**

Students interested in becoming a pilot, are invited to attend one of two **Aviation Open Days** on 21 August and 28 August 2022 to meet with industry experts and current students and ask any questions to understand the journey of becoming a pilot. Students will experience the flight simulator and enjoy a free barbeque and coffee. Registrations are a must to attend. **Register at [RMIT Flight Training and Aviation Open Days](#).**

#### ➤ **RMIT Tech & Trades Day**

Students interested in a technical or trade career, are encouraged to attend the **Tech & Trades Day** on Wednesday 28 September 2022, where students will have hands-on workshop experiences, tour facilities, chat with teachers and current students and have lunch provided.

Vocational education offerings include - *Advanced Manufacturing, Building Design, Carpentry, Cyber Security, Engineering, Information Technology, Plumbing, Surveying, and Web Programming.*

**Register at [RMIT Tech & Trades Day](#).**



## Nutrition And Dietetics Degrees in Victoria in 2022

According to the Dietitian Association of Australia (DAA) - [Dietitian Association of Australia \(DAA\)](#), there is a distinction made between dietitians and other occupations in the nutrition and food science field, including that of nutritionist. The key difference between a dietitian and a nutritionist is that, in addition to or as part of their qualification in human nutrition, a dietitian has undertaken a course of study that included substantial theory and supervised and assessed professional practice in clinical nutrition, medical nutrition therapy and food service management.

**So, in Australia, all dietitians are nutritionists however nutritionists without a dietetics qualification cannot take on the expert role of a dietitian.**

**Victorian universities offering undergraduate courses in nutrition, food science and/or dietetics include:**

UNIVERSITY	COURSE	VCE PREREQ' SUBJECTS	ATAR 2022
<b>ACU</b> (M) – Melbourne	<a href="#">Nutrition Science</a>	Units 3 and 4: a study score of at least 30 in English (EAL) or at least 25 in English other than EAL.	<b>60.75 (M)</b>
<b>Deakin</b> (M) - Melbourne	<a href="#">Nutrition Science</a>	Units 3 and 4: a study score of at least 30 in English (EAL) or at least 25 in English other than EAL.	<b>63.90 (M)</b>
	<a href="#">Nutrition Science (Dietetics Pathway)</a>	Units 3 and 4: a study score of at least 30 in English (EAL) or at least 25 in English other than EAL.	<b>90.45 (M)</b>
<b>La Trobe</b> (M) – Melbourne	<a href="#">Nutrition Science</a>	Units 3 and 4: a study score of at least 25 in English (EAL) or at least 20 in English other than EAL.	<b>61.20 (M)</b>
	<a href="#">Nutrition Science/Dietetic Practice</a>	Units 3 and 4: a study score of at least 25 in English (EAL) or at least 20 in English other than EAL.	<b>91.15 (M)</b>
<b>Monash</b> (C) - Clayton	<a href="#">Nutrition Science - Scholars Program (Dietetics Pathway)</a>	Units 3 and 4: a study score of at least 27 in English (EAL) or at least 25 in English other than EAL; Units 3 and 4: a study score of at least 25 in one of Biology or Chemistry.	<b>92.45 (C)</b>
	<a href="#">Nutrition Science</a>	Units 3 and 4: a study score of at least 27 in English (EAL) or at least 25 in English other than EAL; Units 3 and 4: a study score of at least 25 in one of Biology or Chemistry.	<b>75.10 (C)</b>
<b>RMIT</b> (C/B) – City/Bundoora	<a href="#">Science (Food Technology &amp; Nutrition)</a>	Units 3 and 4: a study score of at least 30 in English (EAL) or at least 25 in English other than EAL; Units 3 and 4: a study score of at least 20 in any Mathematics.	<b>75.00 (C/B)</b>
<b>SWINBURNE</b> (H) – Hawthorn	<a href="#">Health Science (Nutrition major) and a Master of Dietetics</a>	Units 3 and 4: a study score of at least 25 in English other than EAL or at least 30 in English (EAL).	<b>59.40 (H)</b>
<b>Victoria</b> (F) - Footscray	<a href="#">Human Nutrition</a>	Units 3 and 4: a study score of at least 25 in English (EAL) or at least 20 in English other than EAL; Units 3 and 4: a study score of at least 20 in one of Biology, Chemistry, Health And Human Development, any Mathematics or Physical Education.	<b>n/a (F)</b>
	<a href="#">Nutritional Science/Master of Dietetics</a>	Units 3 and 4: a study score of at least 30 in English (EAL) or at least 25 in English other than EAL; Units 3 and 4: a study score of at least 25 in two of Biology, Chemistry, Health And Human Development, any Mathematics, Physical Education or Physics.	<b>85.85(F)</b>

**Note:** Food Science and Nutrition are often offered as majors in courses in health, exercise science, and science degrees, etc. **Students are encouraged to browse [VTAC](#) for a comprehensive list, including double degrees.**





## **Snapshot of Griffiths University in 2022**

- Situated in Queensland, Griffith University began offering courses 40 years ago, and today is ranks in the top 2% of universities in the world - [rankings](#).
- Griffith's teaching and research spans six [campuses](#) in South East Queensland and all disciplines, while it has a network of more than 200,000 graduates extending around the world.
- Griffith University offers future-focused degrees that are developed in consultation with industry, based on cutting-edge research, and taught by Australia's most awarded teachers.
- Students are encouraged to browse [degrees](#) to find out about the many undergraduate, as well as postgraduate, courses on offer.
- Griffith offers over 600 [scholarships](#) that help make university a reality for a variety of new and continuing students. Students could be eligible for different scholarships based on their background, chosen study area, hardships they've experienced, or their achievements so far.
- Students seeking to live in student [accommodation](#) can choose to live on campus at the Nathan or Gold Coast campus, or off campus with one of the university's off campus partners.
- [Student life](#) is geared towards a balance of study as well as access to clubs and societies, etc.

