

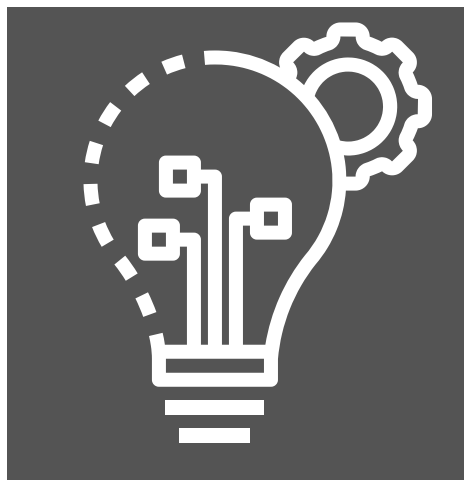
FUTURE WORLD OF WORK AND EMPLOYABILITY SKILLS

Students will explore the future world of work, technology, futurism and the rapid changes occurring in our world.

Furthermore you will learn more about employability skills, the Pivot Career Navigator tool and the latest research by the Foundation for Young Australians about the impacts of globalisation and technology on future careers thinking and employment prospects.

EMMA VAN SMALE
HEAD OF INNOVATION, PRODUCT AND OPS,
25EIGHT

SUSAN PETTIGREW
MANAGER - SCHOOLS, JOBS & PATHWAYS ,
SOUTH WEST TAFE



22ND
OF JULY
1:00PM-
2:30PM

ONLINE VIA ZOOM

<https://bit.ly/3vRhKAD>

MEETING ID: 894 0192 7235
PASSCODE: 291109



FOR MORE INFORMATION, CONTACT NATASHA@GSGLEN.ORG.AU