

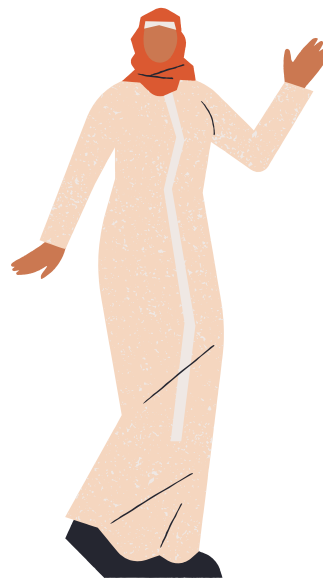


STYLE GUIDE

# CULTURAL DAY

## WHAT CAN YOU WEAR?

### CULTURAL DRESS OR FLAG COLOURS



#### WHAT NOT TO WEAR

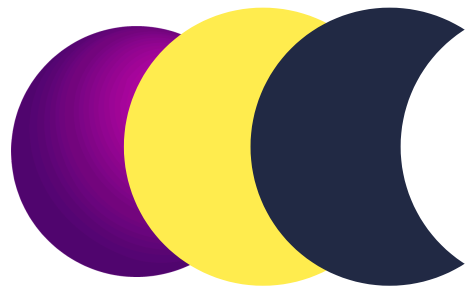
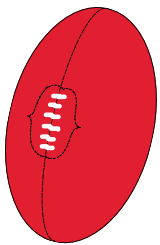
- CASUAL DRESS THAT IS NOT ONE OF THE CULTURAL DAY OPTIONS
- OPEN TOE SHOES OR BACKLESS SHOES
- ANYTHING THAT IS NOT SCHOOL APPROPRIATE
- FLAG COLOURS THAT ARE NOT NATIONALITIES/COUNTRIES



# CULTURAL DAY

## WHAT CAN YOU WEAR?

### SPORTS GUERNSEY OR TEAM COLOURS



E.G MELBOURNE STORM



#### WHAT NOT TO WEAR

- CASUAL DRESS THAT IS NOT ONE OF THE CULTURAL DAY OPTIONS
- OPEN TOE SHOES OR BACKLESS SHOES
- ANYTHING THAT IS NOT SCHOOL APPROPRIATE
- FLAG COLOURS THAT ARE NOT NATIONALITIES/COUNTRIES



# CULTURAL DAY WHAT CAN YOU WEAR?

## FULL SCHOOL UNIFORM



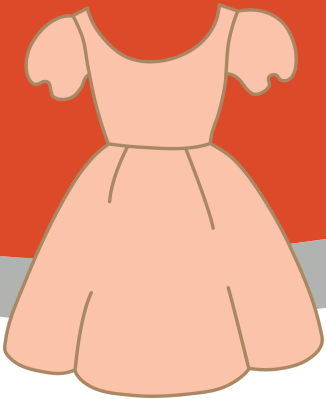
### WHAT NOT TO WEAR

- CASUAL DRESS THAT IS NOT ONE OF THE CULTURAL DAY OPTIONS
- OPEN TOE SHOES OR BACKLESS SHOES
- ANYTHING THAT IS NOT SCHOOL APPROPRIATE
- FLAG COLOURS THAT ARE NOT NATIONALITIES/COUNTRIES



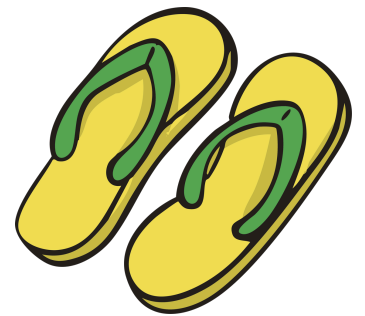
# CULTURAL DAY

## WHAT NOT TO WEAR



**\*CASUAL DRESS WITHOUT MEETING THE DRESS CODE**

**\*OPEN TOE SHOES OR SHOES WITHOUT A BACK ON THEM**



**\*COLOURS OF FLAGS THAT ARE NOT RELATED TO A NATIONALITY/COUNTRY.**

**\*ANYTHING THAT IS NOT SCHOOL APPROPRIATE**

**IF YOU AREN'T SURE,  
ASK BEFORE THE DAY**

