

Spider Crabs



Presented by our
Year 6 Sustainability Leaders:

Zimeng, Emma, Lillian, Logan,
Stevie, Benji, Jayden and Sienna,
in conjunction with Dolphin
Research Institute (DRI).

Goal:

We are aiming to protect the annual spider crab migration which takes place in the shallows of Port Phillip Bay each winter. Our goal is to make a difference in spider crab harvesting, as the population is decreasing. Also catching crabs and fish can also cause problems like litter, which is left on the pier, the carparks and in the water. Litter is bad for the environment because if or when it ends up in the water, animals can get stuck in it or accidentally eat it.



About Spider crabs

-Crabs aren't usually seen by predators when they're alone due to their camouflage, but when crabs aggregate (that means migrate) and march together, they are much easier to spot.

-Spider crabs usually scavenge for food and eat creatures living on the shell of one another.

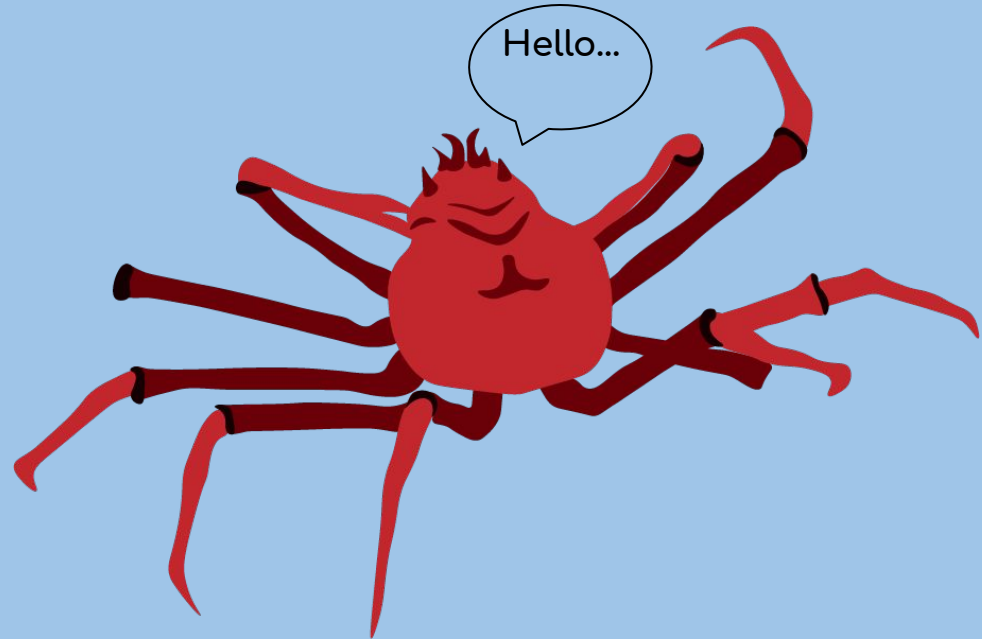
-Like many crustaceans, they have a hard shell to protect themselves, but when they grow bigger their shell can't stretch. So they have to shed their old skin to grow a new one, but a freshly molted crab is a great meal for a predator, like seals, rays and birds.

Why Should We Protect Spider Crabs?

Spider Crabs are important because they are native to Australia and are needed in the food chain, as many other animals need to eat them to survive.

How Can We Help?

-You could help by spreading awareness about spider crabs



Colouring Competition!

As a way to get more of the community aware and involved, we are launching a colouring competition, with some great prizes in a few age categories. Some of the entries will hopefully be displayed in some of the businesses around Rye and Blairgowrie (Mornington Peninsula) where the crabs often gather. The closing date for entries is **Sunday, 16th of May.**