

'Waterford Dreaming' – a tribute portrait to Edmund Rice

Edmund Ignatius Rice 1762-1844

Founder of the Christian Brothers

The title of this portrait enlists an understanding for how Edmund Rice's vision became a reality.

To find inspiration for connecting to this portrait of Blessed Edmund Rice, titled 'Waterford Dreaming' the following reflection is offered by two Australian Christian Brothers:

'Edmund Rice, in a pensive moment seeking the gift of wisdom as to how best to respond to the hopes and needs of the poor, uneducated and unemployable youth who roam the streets of Waterford, Ireland'.

The spirit of Edmund Rice remains at the heart of the ministry of Christian Brothers' Schools around Australia. The vision and dreaming of the First Nation People of Australia ignites a renewed vision for those travelling with Edmund Rice education. 'Dreaming' is an Australian Aboriginal belief that we are so grateful for from this Land's original and the world's oldest surviving civilisation.

To be inspired by the life and dreaming of Blessed Edmund Ignatius Rice and for belonging to a Christian Brothers' School, we find in Blessed Edmund the daily prayerful yearning for strength to overcome any struggle or challenge in life. To find hope and a way forward for each person knowing we are loved by God, our family and within our community, we know Edmund Rice stands tall and strong in the moments of adversity.

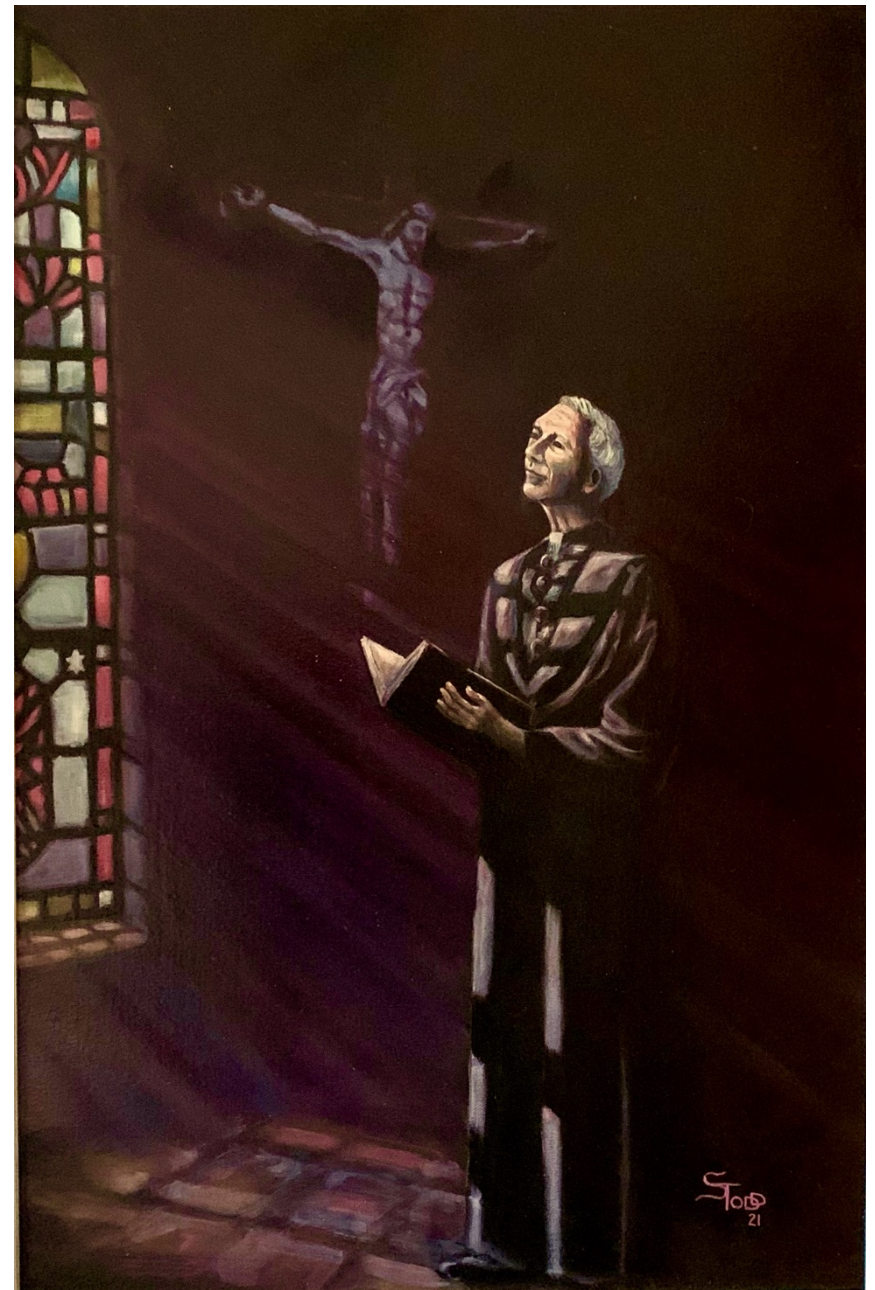
This portrait of Edmund Rice was commissioned by the Principal of St. Pius X College, Chatswood NSW, John Couani. John sought the inclusion of the image of the crucifix to be added to the painting to highlight the full ministry of Blessed Edmund Rice and the work of Christian Brothers' education across Australia.

Blessed Edmund Rice, pray for us. Amen



Oil on canvas portrait by Steve Todd c 2021

Steve Todd was educated by the Christian Brothers and completed teacher training at ACU, Mount St. Mary's campus, Strathfield. Steve has served Catholic Education as a teacher and as a School Principal. Steve Todd now works as an artist from Start Studio.



'Waterford Dreaming – a tribute to Edmund Rice'

Oil on canvas by Steve Todd c 2021