



WELCOME

The Student Adviser Webinar Update
will commence shortly

Student Adviser Webinar Update





Acknowledgement of Country

Griffith University acknowledges the Traditional Custodians of the land on which we are meeting and pays respect to the Elders, past and present, and extends that respect to all Aboriginal and Torres Strait Islander people.

Student Recruitment team

Katy Cuskelly: Head of Student Engagement & Recruitment

Jodie Brooks: Student Recruitment Manager

<p>Alaine Bailey Central, West and North Brisbane Moreton Bay Toowoomba Regional QLD</p>	<p>Sabrina Schultz East and South Brisbane Logan Ipswich Bayside Sunshine Coast</p>	<p>Ben Tinsley Gold Coast Northern NSW</p>
<p>Joe Groth VET Pathways RTO Pathways Mature students</p>	<p>Leanne Hendry Conversion and pathways (Focused on assisting prospective students to find their best pathway to University).</p>	<p>Administrative support Event assistance</p>
<p>Schools Engagement team (HEPPP funded, 34 schools allocated within the Widening Tertiary Participation program, plus Adult Learner, Pasifika & Community). Collaborates with the Indigenous Outreach team.</p>	<p>Postgraduate team (Focused on assisting Postgraduate students with their study related decisions and easing the application process for them).</p>	<p>Events team (Recruitment) (Responsible for managing all student engagement and recruitment focused events for Griffith University).</p>



Events for the remainder of 2022

- Year 9 and 10 Experience Days
- Academic Bootcamps
- Frequently Unasked Questions
- Year 12 Early Offer parent and student information
- Options – online chat





Creative Arts Open Day - Recap

South Bank campus

- Queensland Conservatorium
- Queensland College of Art
- Griffith Film School
- Industrial Design
- Architecture



Griffith Open Day

Sunday, 14 August 2022

**Nathan and Gold Coast
campuses**

Griffith Sports College Update

49 athletes from Griffith won 58 medals

31 gold, 13 silver and 14 bronze medals

If Griffith was a country, we would have placed 5th on the medal tally



School holiday campus tours

**South Bank, Nathan,
and Gold Coast:**

18 September – 7 October



Griffith Experience Days

Experience days provide a great opportunity for students to explore a Griffith campus, tour lecture theatres and labs, and get hands-on with interactive sessions dedicated to different fields of study.

- Year 9 and 10 – 27, 28, 29 September
- Nathan, South Bank and Gold Coast



Future Leaders Retreat 2023

- 16 – 18 January 2023 - Gold Coast
- Three-day residential program focusing on leadership, personal and career development
- Presentations from Griffith's Vice Chancellor, industry leaders and development coaches
- An opportunity for students to network, gain a wide variety of life skills, and get to know Griffith



Awards for your students

Spark Award (formally Remarkable Award) \$200 voucher

Lighting the spark for a bright future

Sir Samuel Griffith \$24,000 Principal Recommendation Scholarship Program

- Current school leaver
- applying for a tertiary place through the QTAC or UAC
- meet the eligibility criteria and enrol in a Griffith degree
- receive ATAR no lower than 95.50
- demonstrate:
 - leadership ability
 - civic responsibility
 - social awareness



Academic Bootcamps for Year 12

Subjects offered

- Maths Methods, Chemistry, Physics, Biology and Psychology (new in 2022)

2022 Dates

- SCIENCE COURSES:
 - 19 - 22 September (Monday to Thursday) - Gold Coast campus only.
- MATHS METHODS COURSE:
 - 26 - 29 September (Monday to Thursday) - Gold Coast campus only.

Timetable

- 9 am – 3 pm
- Our timetable allows for students to attend up to 2 courses per holiday break. Only 1 course per week.

Cost

- \$149 per course.

For more information please email - scienceonthego@griffith.edu.au

griffith.edu.au/academic-bootcamps

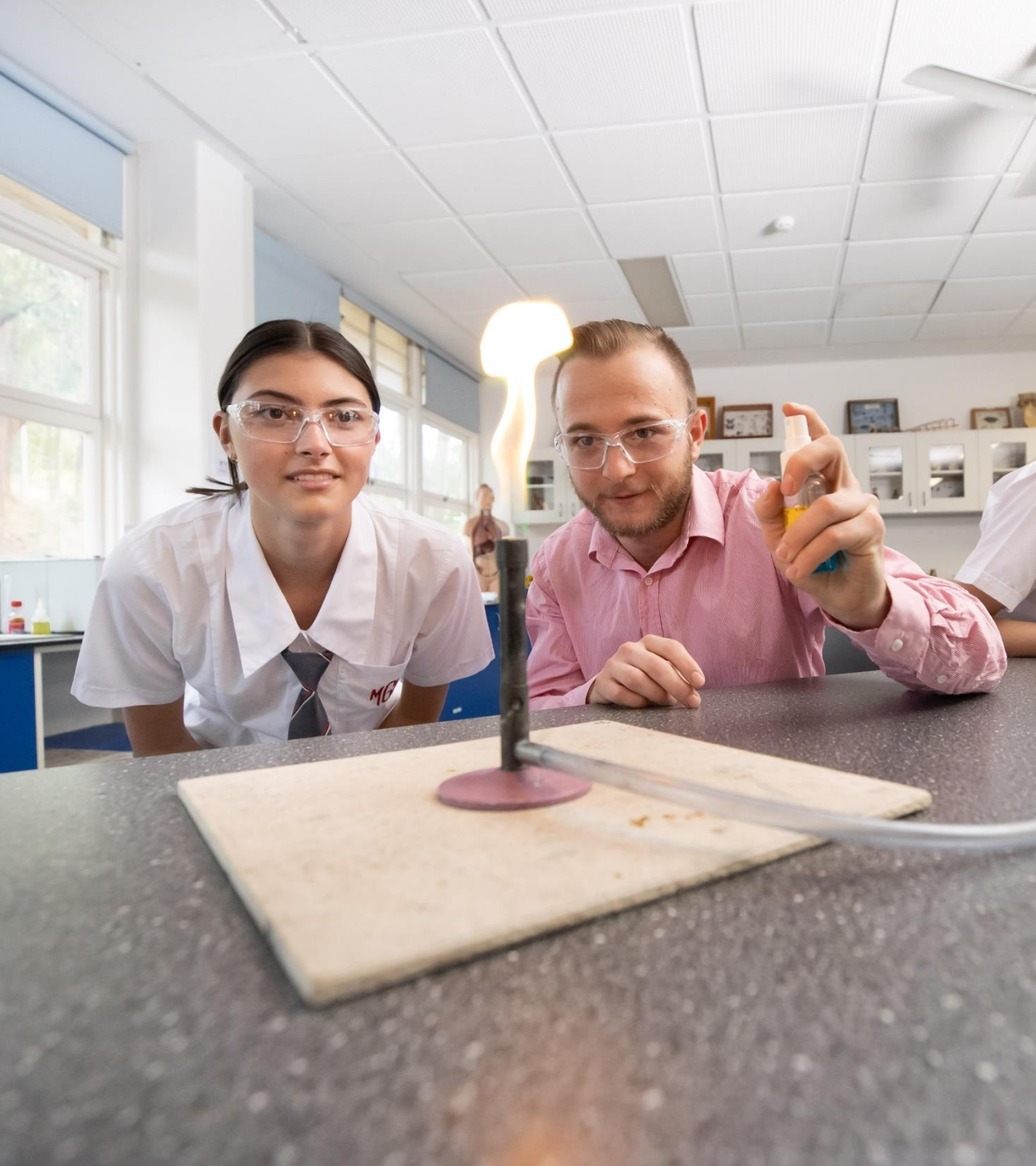




Year 12 Early Offers

Get certainty with Griffith's Early Offer Guarantee

- Over 80 single and double degrees
- NEW IN 2022: Engineering including doubles and some Advanced degrees
- Offers are based on Year 12 internal assessment results or Cert 3 or 4 qualifications
- Open to current Year 12 students in Queensland and specific northern New South Wales schools



Applying for an Early Offer

- Submit your QTAC application by 17 October
- Ensure one of the available degrees is listed as your QTAC preference
- Upload your school results or documentation to your QTAC application by 31 October
- Offers are issued on 18 November 2022



What happens next?

- If you are approved for an Early Offer you will receive an email on the 8th of November
- Check your preferences to ensure the degree you want is your first preference

THEN

- Enrol in your 2023 courses from the 23 November



Undergraduate Diplomas

Our new undergraduate diplomas offer a supported start to your university studies, helping you successfully transition to your chosen bachelor degree and fast-tracking you to second-year studies. The new range of undergraduate diplomas includes:

- **Diploma of Applied Science**
- **Diploma of Arts**
- **Diploma of Business**
- **Diploma of Criminology and Criminal Justice**
- **Diploma of Education**
- **Diploma of Engineering**
- **Diploma of Information Technology**
- **Diploma of Music**

You'll develop foundational knowledge and skills and be able to draw on a wide variety of student support programs. You'll undertake your first year of study in the diploma alongside your peers in the bachelor degree and finish your studies in the same amount of time, at no extra cost.

Once you've successfully completed your diploma, you'll be offered guaranteed entry into the second year of the corresponding bachelor degree.

Find out more at griffith.edu.au/undergraduate-diplomas



Diploma of Languages

- Studied concurrently with any other Bachelor degree – either at Griffith or with another institution
- With this option, students can continue learning a language taken at school or start a new language as a beginner while also gaining a separate second degree in another area
- Perfect for students with an interest in a career that can take them abroad for work, or an industry that benefits from a second language (as so many do!)

griffith.edu.au/study/degrees/diploma-of-languages-8025



Stay in contact

- ✓ griffith.edu.au/engage/schools-recruitment-and-engagement
- ✓ Monthly Griffith Newsletter
- ✓ Regular emails from your Student Recruitment Officer
- ✓ Event social media assets for your social media channels
- ✓ Email: futurestudents@griffith.edu.au
- ✓ Phone: **1800 073 875**
- ✓ Facebook: [griffithuniversity](https://www.facebook.com/griffithuniversity)
- ✓ Twitter: [griffith_uni](https://twitter.com/griffith_uni)

Admissions Update

Sara Ardern - Deputy Manager
Domestic Admissions



Admission Requirements

Admission requirements are listed in the Degree Finder or the Course entry through QTAC and UAC.

- **Eligibility:** Minimum Age Requirements, Prerequisites, English language proficiency, Prior Study or Requirements – such as a completed Degree or Diploma.
- **Merit:** Applicants are ranked in order of merit using based on their academic achievement (ATAR) or Selection Rank. Other selection criteria can include Interviews or Auditions which may be used as a standalone or in combination with academic achievement and/or test scores e.g. UCAT.

Majority of Griffith programs applicants are selected by ordering their ATAR/Selection Ranks from highest to lowest and the highest rank is then considered for admission.



Common Pathways to Griffith

- New Undergraduate Diplomas
- Guaranteed Admissions Schemes
- First Peoples Admission Pathways
- VET at school and TAFE Pathways
- Griffith Personal Statement (GPS)
- Aptitude for Engineering Assessment (AEA)
- IB Safety Net
- Upgrading via university study
- Griffith College

griffith.edu.au/admission-pathways



< PREVIOUS QUESTION LINK



RESULTS

Hi **Brenton** told us you are a **domestic student** who **has recently finished or is currently in high school** and **was or am studying for my ATAR or IB** and **have done or am doing a VET in school.**

Your pathway to Griffith



Guaranteed Admission Schemes

To take some of your stress out of applying to university and give you more certainty about your future study choices, we offer a range of guaranteed admission options. Whether you are a school leaver or mature applicant you can be considered for guaranteed admission into a range of Griffith degrees if you have an ATAR 80+/IB 28+ or hold a completed VET qualification.

[Learn more about the schemes →](#)



ATAR Guarantee

There are two levels of ATAR guarantee. The first is ATAR 80+/IB 28+ and the second is ATAR 90+. Check Griffith's degree finder to discover whether your desired degree is included in either of these categories. Look for the red Guaranteed Admission Scheme badge on the program's page.

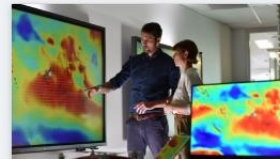
[ATAR guarantee levels →](#)



Year 12 Early Offer Guarantee

If you are a current Year 12 student in Queensland or northern NSW and meet the eligibility requirements, you could receive an offer on the last day of school in November, so there's no anxious waiting to find out what you're doing or where you're going next. There's an additional application process and early closing date, click above to find out details.

[Year 12 early offers →](#)



VET Guarantee

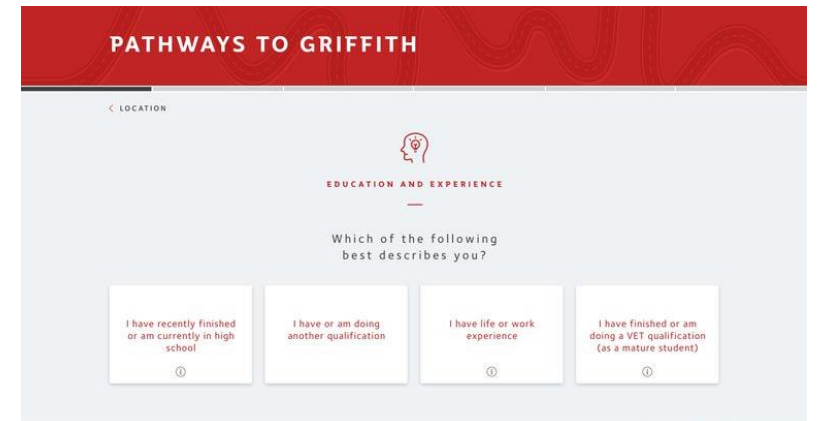
If you have completed an AQF Certificate III, Certificate IV, Diploma or Advanced Diploma during or after high school, you may be eligible for guaranteed admission to many of Griffith's programs.

[VET guarantee details →](#)

[RESTART](#)





Pathways to Griffith

- Online interactive webtool
- Hosted on the Griffith website
- Discover tailored pathways to study by answering a series of questions



Guaranteed Admission Schemes

To take some of the stress out of applying to university, and provide more **certainty about future study choices**, we offer a range of guaranteed admission options.

 GUARANTEED ADMISSION SCHEME YEAR 12 EARLY OFFER	 GUARANTEED ADMISSION SCHEME ATAR 90+ IB 33+	 GUARANTEED ADMISSION SCHEME ATAR 80+ IB 28+	 GUARANTEED ADMISSION SCHEME VET
Use your internal Senior Schooling results or VET qualification to receive your early offer by applying to one of more than 60 eligible undergraduate degrees.	Be recognised for your outstanding performance at school and enjoy the freedom to take your place in a range of our most competitive, in-demand undergraduate degrees.	Leverage your high achievement and claim your spot in a variety of undergraduate degrees focused on creative, generalist and professional fields.	Take your vocational education and training qualifications further with our guaranteed entry pathway into a broad set of undergraduate degrees.
Learn more >			Learn more >

A comprehensive list of program inclusions and what schemes apply to each program can be found on the website.

griffith.edu.au/guaranteed-admission

VET Guaranteed Admission Scheme

A completed Australian Qualification Framework (AQF) Certificate III, IV or Diploma will meet the minimum selection rank for a range of Griffith programs - look for the badge on the program entry on the Degree Finder.



Applicants must still meet the English Subject Prerequisite for admission as well as any other admission requirements:

- A **Diploma qualification** will meet the English subject prerequisite
- A **Cert III or Cert IV** does not meet the English subject prerequisite

A comprehensive list of program inclusions can be found on the website.

griffith.edu.au/guaranteed-admission



VET Pathways

For applicants applying for programs that are not listed in the VET Guarantee, their qualification will still be considered. Admission schedules on the VET website provide an overview of the selection rank they may be assigned for their completed study.

Post school options offering direct admission

TAFE Admission Scheme: Once students have completed a TAFE Diploma post school, they can apply directly to Griffith for a range of programs.

Certificate IV in Adult Tertiary Preparation provides a good foundation for university study. Once completed they can apply directly for a range of programs.

griffith.edu.au/vet

Griffith College offers both a Foundation program and Diplomas that allow for a seamless transition into a Griffith program upon completion.

griffith.edu.au/griffith-college-pathways





ATAR Guarantee

In recognition of outstanding performance at school a number of our programs offer guaranteed admission for achievement of an ATAR 90+ or IB 33+



The ATAR 80+ or IB28+ Guarantee also recognises high achievement in a variety of our programs.



Look for the badges on the program entry in the Degree Finder, or a comprehensive list of program inclusions can be found on the website.

griffith.edu.au/guaranteed-admission



First Peoples Admission Pathway

Griffith University offers admission pathways for applicants who identify as Australian Aboriginal and/or Torres Strait Islander.

Applicants are encouraged **to identify** when they apply via QTAC or UAC so they can be considered for our **dedicated pathway options**, if they are not meeting the standard admission criteria.

New for 2023 Admission

Applicants will be assessed based on formal qualifications, life experiences and other transferable skills.

- Will need to:
 - Meet a minimum academic hurdle – ATAR 50.00 or completed Certificate II or 2 years full time employment
- Provide:
 - personal statement: who you are, why you want to study, what it means to you
 - personal resume
 - certified confirmation of Aboriginality and/or Torres Strait Island status
 - attend an interview

Note: Applicants may be considered for admission to the Bachelor degree or in some cases a packaged offer to the Diploma/Bachelor depending on their preferences.

First Peoples Health Pathway

The **First Peoples Health Pathway** has approved admission for the following programs:

- Bachelor of Dental Health Science
- Bachelor of Medical Science
- Bachelor of Midwifery
- Bachelor of Physiotherapy
- Bachelor of Paramedicine

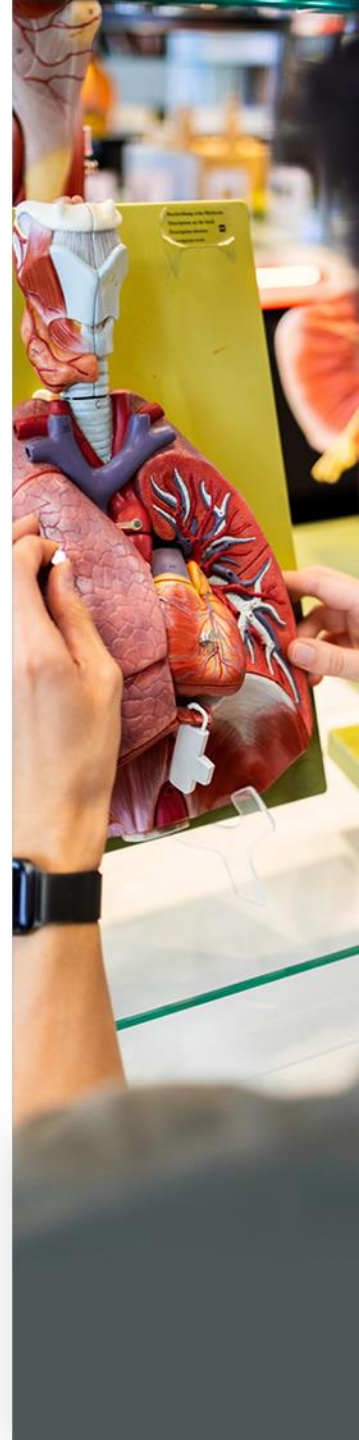
Applicants apply through QTAC and are then invited to be considered under this pathway.

Applicants will be considered based on:

- academic achievement – minimum ATAR or equivalent
- meeting subject prerequisites
- interview
- Bachelor of Dental Health Science – UCAT is not requirement if considered under this pathway

Applicants will be asked to provide additional documentation which includes:

- evidence of Aboriginal and/or Torres Strait Islander status
- personal resume, including referees and details of achievements and experience
- a brief statement outlining reasons for wanting to study their chosen program



Griffith Personal Statement

Predominantly for mature applicants to apply for admission to a range of undergraduate programs based on their skills, knowledge, personal and professional competencies.

Requirement: provide short answers to a number of questions based on criteria we know are good predictors of success at university.

Key Points:

- Applicants are automatically considered if they are **not meeting the minimum selection rank and/or prerequisites** for an eligible program.
- Applicants must meet English Language Proficiency
- Apply via **QTAC** or **UAC**
- **Mature applicant pathway however current Year 12 applicants are eligible from T2 intake onwards**
- Not a pathway for applicants who identify as Aboriginal and/or Torres Strait Islander – see First Peoples Admission Pathway

For more information, including the list of eligible programs visit the website:

griffith.edu.au/griffith-personal-statement

Adjustment Factors

Griffith University offers a range of adjustment factors which can improve an applicant's selection rank. Year 12 Subject Adjustments and Location Adjustments are automatically applied, whereas applicants nominate for the Educational Access and Elite Athlete Schemes and further documentation will be required to support their application.

The maximum adjustments an applicant can receive overall is eight (8.00).



Year 12 Subject Adjustments



Location Based Adjustments



Educational Access Scheme



Elite Athlete Adjustment Scheme

Excluded Programs: There are some program exclusions depending on the scheme, visit the website for more details.

griffith.edu.au/adjustment-factors

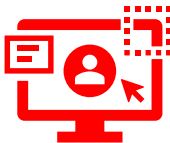
Aptitude for Engineering Assessment



The Aptitude for Engineering Assessment (AEA) is a two-and-a-half-hour multiple choice test that assesses a candidate's aptitude to think scientifically, solve quantitative problems, critically analyse information and display interpersonal understanding.



Successful students will be offered admission into the Bachelor of Engineering (Honours) or Bachelor of Software Engineering (Honours) program at either the Nathan or Gold Coast campuses.



To be considered, applicants must register for the test and include an eligible Griffith engineering program on their QTAC or UAC application.

Tests are held in September each year on the Gold Coast and Nathan campuses. Offers will commence on 18 November 2022. Key Dates and registration form can be found on the website.

griffith.edu.au/aptitude-engineering-assessment



Pathways to competitive programs

Upgrading via Tertiary Studies

For competitive programs, students can complete a full-time year of university study in an alternative program in order to improve their selection rank for admission - At Griffith a full-time year is 80-credit points (CP) of study.

- assessed based on the amount of study completed and the GPA achieved.
- other factors for consideration would be to complete specific subjects in order to meet any prerequisites.
- can select a program with a similar first year program structure to maximise credit

Combining Multiple Study Attempts

For studies of less than one year full-time, a high enough selection rank generally cannot be achieved for entry to competitive degrees. To help advantage our applicants, Griffith will however combine multiple study attempts to achieve a higher selection rank.

Key Points:

- only study attempts of less than one year are combined
- the combined study attempts must add up to one year of full-time equivalent study or more
- combined study attempts must be the same academic level e.g. all bachelor level studies
- all study attempts are combined e.g. best grades cannot be cherry picked to make up the 1 FTE
- highest eligible selection rank will still be considered for admission, so if the combined rank is less than a rank from another qualification it will not be considered in the first instance.

griffith.edu.au/upgrading-university-studies

Incomplete IB Diploma

Griffith offers a safety net to students who experience circumstances that **prevents them from being awarded the International Baccalaureate Diploma.**

Applicants with **24 or more points in the IB** who do not satisfy the requirements for the award will be assessed on the completed IB Diploma schedule. **Applicants don't need to apply separately for the Safety Net**, they are automatically considered when applying. Any eligible adjustments will also be applied to their selection rank.

New IB Diploma Admissions Score

For 2023 admission, an improved process for converting overall IB results into a selection rank will be introduced for 2022 IB graduates.

- a selection rank (often referred to as combined rank) will be calculated from the IB Admissions score
- IB Admissions score will be based on average performance within each band of subject results
- selection rank will now be decimalised to allow for finer grain comparison to ATAR

Candidates will receive their IB Admissions Score from the Tertiary Admissions Centre in their state in January.

griffith.edu.au/international-baccalaureate-diploma



Prerequisites & Assumed Knowledge

Current and historical equivalencies can be found on our website **including QLD, NSW and other interstate Year 12 subjects.**

Applicants are also encouraged to contact us if they have completed or intend to complete a course that does not appear on this website and should also check the timing of results and cost to determine the best option for them.

Griffith offers a **Bridging English course** designed to meet prerequisites.

We also offer **Short Courses** that are designed to update skills in Mathematics and Chemistry.

griffith.edu.au/prerequisites-assumed-knowledge



Bachelor of Education

Prerequisites:

- **QLD:** General English, English as an Additional Language, Literature or English & Literature Extension (Units 3&4, C); General Mathematics, Mathematical Methods or Specialist Mathematics (Units 3&4, C)
- **NSW:** Any two units of English (Band 3) excluding English Studies, Mathematics Standard 2 or Mathematics Advanced or HSC Mathematics Extension 1 or 3 (Band 3)
- **Primary Education students** from second year will need a General Science subject (Units 3&4, C) or any two units of Science (Band 3) or equivalent (includes Psychology).
- **Recommended:**
 - Secondary Education: Senior studies in chosen teaching areas
 - Chemistry, Physics or Biology require the chosen area successfully to be completed at senior level

Non-Academic Requirements for Teacher Entry (NARTE)

- All applicants must meet the non-academic requirements
- Applicants are required to address two categories: motivation and suitability to become a teacher.
- [Demystifying the Teacher Personal Statement Fact Sheet and webinar](#)

Apply for the Bachelor of Education by 31 January 2023

qtac.edu.au/teacher-entry

uac.edu.au/current-applicants/managing-your-application#teaching-questionnaire

griffith.edu.au/study/degrees/bachelor-of-education-1567

Queensland Conservatorium

Steps to Apply

- 1 Apply to QTAC by the closing date
- 2 Pay Audition fees
- 3 Submit Phase 1 Audition

Phase 1

Submit:

- Video audition or portfolio
- Artistic Statement (Music)
- CV & Headshot (Acting & Musical Theatre)

Phase 2

Attend audition week and complete:

- live audition and/or interview (Music)
- audition workshop (Acting & Musical Theatre)

Key Dates – B Music (including new Diploma)

Apply by: 9 September 2022

Phase 1 due: 16 September 2022

Audition week: 26 – 30 September 2022

Key Dates – B Musical Theatre & B Acting

Apply by: 31 August 2022

Phase 1 due: 31 August 2022

Audition week: 26 – 30 September 2022

Full audition requirements are available now on the website.

New Diploma of Music: audition timelines and requirements will be the same as the Bachelor of Music.

griffith.edu.au/conservatorium-auditions

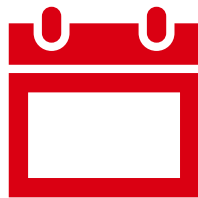


Dental Health Science

Admission for this program is determined by the following three essential components:

- 1 Performance in University Clinical Aptitude Test (UCAT ANZ) - 20%
- 2 Performance in the Multiple Mini Interview (MMI) - 40%
- 3 Academic Results (ATAR/GPA) - 40%

No adjustments apply to this program.



UCAT ANZ Registrations: now closed for 2023 admission

UCAT ANZ Exams: 1 July to 12 August 2022

QTAC Applications close: 30 September 2022

Multiple Mini Interviews (MMI): 24 & 25 November 2022

For more information on UCAT ANZ, including free preparation resources visit the website: ucat.edu.au

griffith.edu.au/study/degrees/bachelor-of-dental-health-science-1577



Rural Priority Access Scheme

Griffith sets aside places in the Bachelor of Dental Health Science for eligible rural students.

Applicants must have lived in a rural area for

- **at least 5 consecutive years or**
- **10 years cumulatively**

Places are limited, and applicants **must meet minimum admission requirements** for the program including performance in UCAT, MMI and academic attainment.

For more information, including links to the geographic eligibility, visit the website.

griffith.edu.au/rural-priority

Bachelor of Medical Science

Admission criteria:

- Year 12 (current or no more than 3 years after graduation)
- No attempted tertiary study at diploma level or higher (GUESTS acceptable)
- ATAR 99+: cut-off may vary between campuses
- **Prerequisite:** a minimum grade of C in units 3 and 4 in a General English (English, Literature, English and Literature Extension, English as an Additional Language) or equivalent
- **Assumed knowledge:** Mathematical Methods and Biology or Chemistry or Physics
- Meet English Language Proficiency

No adjustments apply and there is no UCAT or interview requirement.

Apply through QTAC by: 30 December 2022

griffith.edu.au/study/degrees/bachelor-of-medical-science-1280



**Get the best out of
your application....**

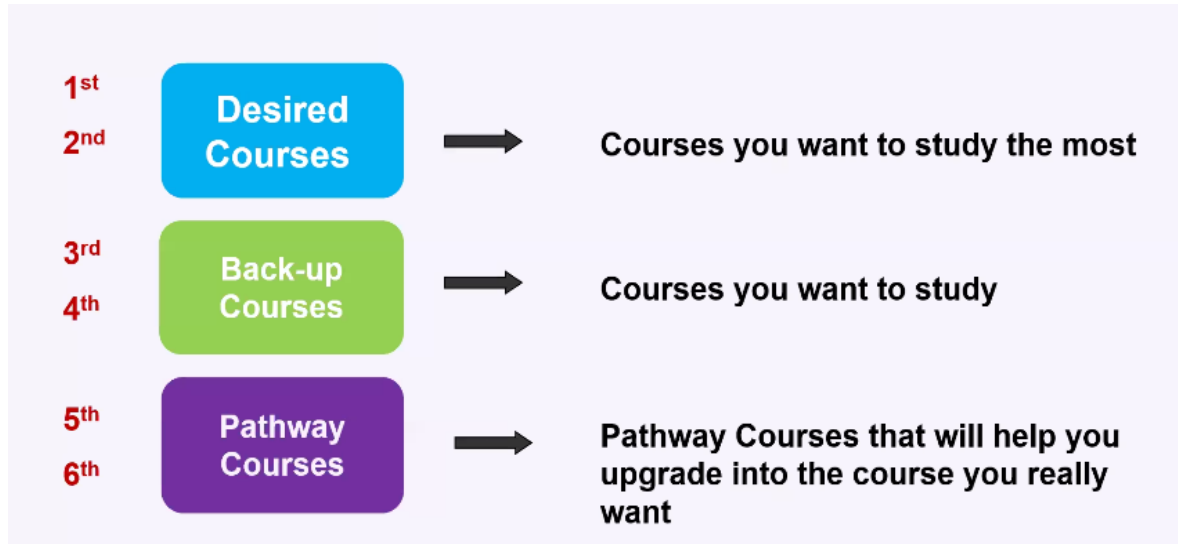


Maximising Preferences

By understanding and making the most of their preferences, students will have the best chance of receiving an offer to Griffith.

QTAC – list up to 6 preferences

UAC – list up to 5 preferences



We recommend applicants check:

- application and document due dates
- admission criteria – have you, or are you going to meet these requirements?
- offer round participation – when will offers be made
- intakes - ie March 2022, July 2022
- preference order e.g., don't put the July intake before March intake
- cost of the alternate pathway and overall time – waiting 6 months in some instances may be a cheaper option or get then back on track sooner.

More information on preferencing visit the QTAC or UAC websites:

qtac.edu.au/preferences

uac.edu.au/future-applicants/how-to-apply-for-uni/selecting-your-course-preferences

Preferencing and Pathways

It's always a good idea to have a backup plan!

Didn't receive the ATAR needed for an offer into their desired degree? Don't worry, there are alternative options:

- preference degrees with lower minimum ATAR/Selection Ranks which provide either good foundational knowledge or have a common first year for credit
- preference the single degree option
- advanced with Honours programs – apply for the standard degree and look to change after completing some study
- preference another campus – but be willing to attend that campus as a change may not be possible
- preference a program that has a dedicated pathway option e.g. one of the new Diploma pathways and take advantage of a seamless transition to second year of the associated Bachelor's degree.

Check the Degree Finder to explore degrees with a similar structure:

griffith.edu.au/degrees

Check our pathways site for more options:

griffith.edu.au/pathways

Preferencing Pathways Examples

Program	Pathway Program
Occupational Therapy (Hons)	B Health Science or B Psychological Science
Physiotherapy	B Health Science or B Exercise Science
Clinical Exercise Physiology	B Exercise Science
Paramedicine	B Health Science or B Biomedical Science
Dental Health Science	B Health Science – other Dental programs not recommended
Medical Science	Consider a degree that will set them up for Graduate entry medicine programs
Midwifery	B Human Services, B Child, Youth & Family Practice - No credit but can build foundational knowledge
Psychology (Hons)	B Psychological Science, B Counselling, B Social Work
Biomedical Science	B Science, B Health Science
Film and Screen Media	B Arts, B Visual Arts
Education	Diploma of Education or B Arts or B Science to pick up prerequisites and improve rank

Responding to Offers

It is important to respond to an offer by the date and time specified on the offer email. If an offer expires, applicants may be able to reactivate their offer.

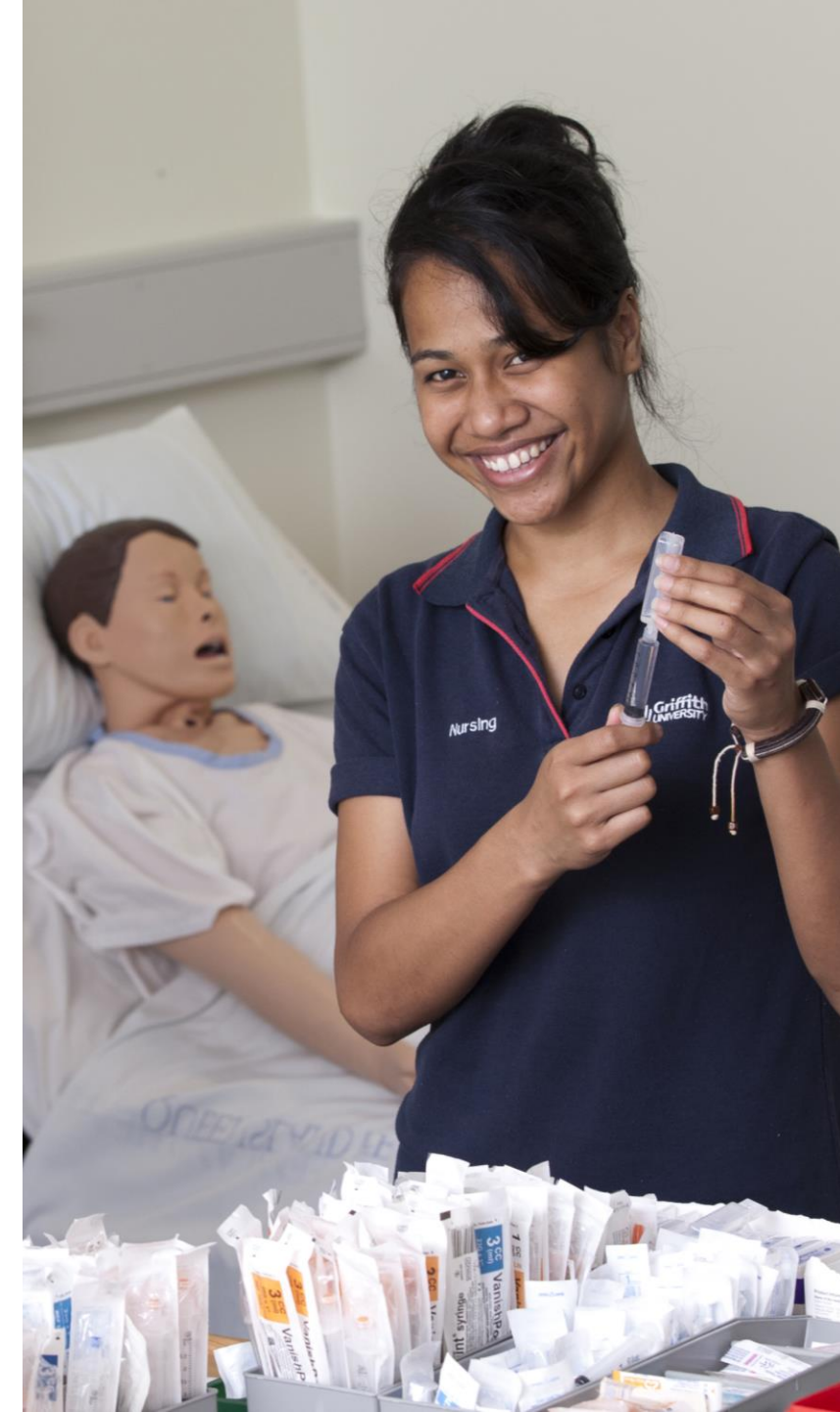
For our competitive degrees however, applicants only have a short timeframe to respond and enrol at Griffith to secure their place. By not following the steps detailed in their offer and in their Starting@Griffith email, their offer will lapse.

Three options to respond to offers:

- 1 Outright Response
- 2 Conditional, with no change of preference
- 3 Conditional, with change of preference

For each response option, you can accept reject or defer (if available).

qtac.edu.au/reactivate-your-expired-offer/
qtac.edu.au/offers/



Offer Rounds and Course Vacancies

Offer Round	Inclusions
18 November	Queensland Conservatorium Degrees Early Offer Guarantee Completed qualifications other than ATAR e.g. VET
22 December	Year 12 students where results are available, including some competitive health degrees: <i>B Clinical Exercise Physiology, B Dental Hygiene, B Dental Technology, B Dental Technology/B Dental Prosthetics, B Paramedicine, B Physiotherapy, B Occupational Therapy (Hons)</i>
12 January	All year 12 students including all competitive health degrees <i>B Clinical Exercise Physiology, B Dental Health Science, B Dental Hygiene, B Dental Technology, B Dental Technology/B Dental Prosthetics, B Paramedicine, B Physiotherapy, B Occupational Therapy (Hons), B Midwifery, B Medical Science</i>

For up to date offer round participation dates and course vacancies visit:

qtac.edu.au/course-offer-dates-and-vacancy-information/

uac.edu.au



Key Application Dates

QTAC and UAC Applications are open now.

Programs with fixed closing dates:

- B Acting and B Musical Theatre – 31 August 2022
- B Music – 9 September 2022
- B Dental Health Science & Nursing (Advanced Standing) programs – 30 September 2022
- B Clinical Exercise Physiology, B Dental Hygiene, B Medical Science, B Midwifery, B Occupational Therapy (Hons), B Physiotherapy, B Paramedicine – 30 December 2022*
- B Education – 31 January 2023

*Applicants should submit their application no later than the document due date 9 December. However, they can add these degrees to their QTAC preferences up to 30 December.



Questions?

Please put your questions in the chat.

Contact us:

Contact Us page for students:
griffith.edu.au/study/contact-us

P: 1800 677 728

**Thank you for
joining us today**



Griffith
UNIVERSITY



Griffith UNIVERSITY
Queensland, Australia