



Department of  
Education

# Student Mobile Phones in Public Schools Policy

## Information PowerPoint

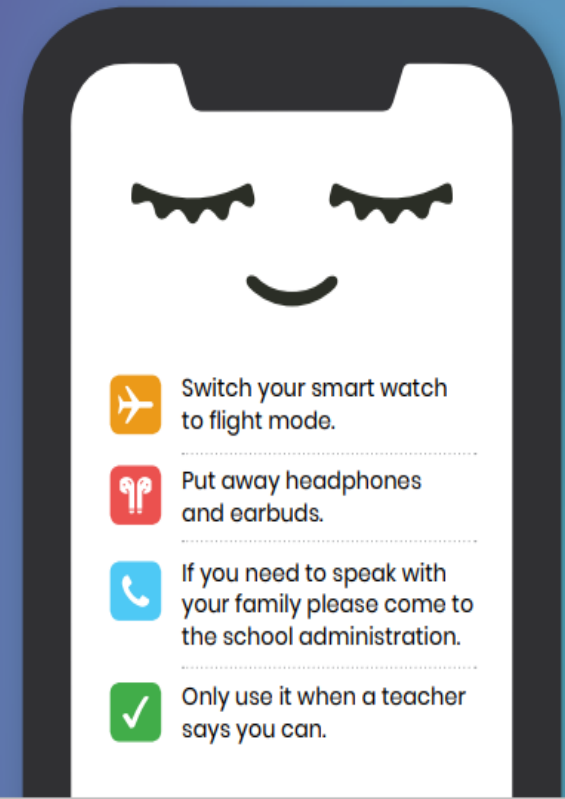
Shaping the future





# OFF AND AWAY


*All day*


Turn off your mobile phone and put it away during the school day.



 Switch your smart watch to flight mode.

 Put away headphones and earbuds.

 If you need to speak with your family please come to the school administration.

 Only use it when a teacher says you can.

# Mobile Phone Policy

The Department introduced a ban on the use of mobile phones in schools which took effect from the beginning of Term 1 2020.

The main reasons were:

- Remove the potential learning distraction
- Increase teaching time
- Improve health and wellbeing of students
- Reduce opportunities for cyberbullying during school hours



# Mobile Phone Policy

The Department policy states that mobile phones are banned for use by students during school hours.

- Year 7 – 12 students may have their mobile phones with them
- However, phones must be turned off, not seen, not heard



There are some exceptions to this:

- Specific educational purposes (students must know when this will occur and specific details of the education purpose must be made available)
- Health reasons as approved by the Principal



# **What does this mean and look like at the WA College of Agriculture Harvey?**

**( Refer to Page 21 of the College Handbook)**

# School Day Context

Students are permitted to be in possession of their mobile phone during the school day however, mobile phones must be turned off and away all day, including break times.

The school day is from 8 am to 4 pm (2.25pm on Friday), and extends to cover morning milking and weekend stock hours of work.

Smart watches must be in 'aeroplane mode' so phone calls and messages cannot be sent or received during the school day.

Students who take their phones to class or section do so at their own risk.

Staff may expect students to leave their mobile phone on a desk, table, bench or designated area in trades/farm when they go to the toilet or have permission to leave class/workshop/section during the school day.



Department of Education  
GOVERNMENT OF WESTERN AUSTRALIA

## OFF AND AWAY

*All day*

Turn off your mobile phone and put it away during the school day.



-  Switch your smart watch to flight mode.
-  Put away headphones and earbuds.
-  If you need to speak with your family please come to the school administration.
-  Only use it when a teacher says you can.

# Residential Context

This is defined as those times outside of the school day.

Residential Students are permitted to use their mobile phone during residential time with the exception of:

- Meal times
- After lights out and not prior to 6.00am
- During prep –the same conditions/exceptions as that of the school day apply ('off and away')



# Expect to have your mobile phone confiscated if:

- You use your mobile phone during the school day without permission. This includes using it to listen to music or to attach to a Bluetooth device in class, workshops, in vehicles or out on section.
- Your mobile phone rings, buzzes, beeps or vibrates – this means the phone is not off.
- Your mobile phone is visible, protruding from your pocket or out on a desk/table – this means it is not away.
- As a Residential Student, you use your mobile phone during meal times, prep, after lights out and prior to 6.00am.



**Students who do not follow the mobile phone policy will have their phone confiscated for the following lengths of time.**

**First offence**

**48 hours**

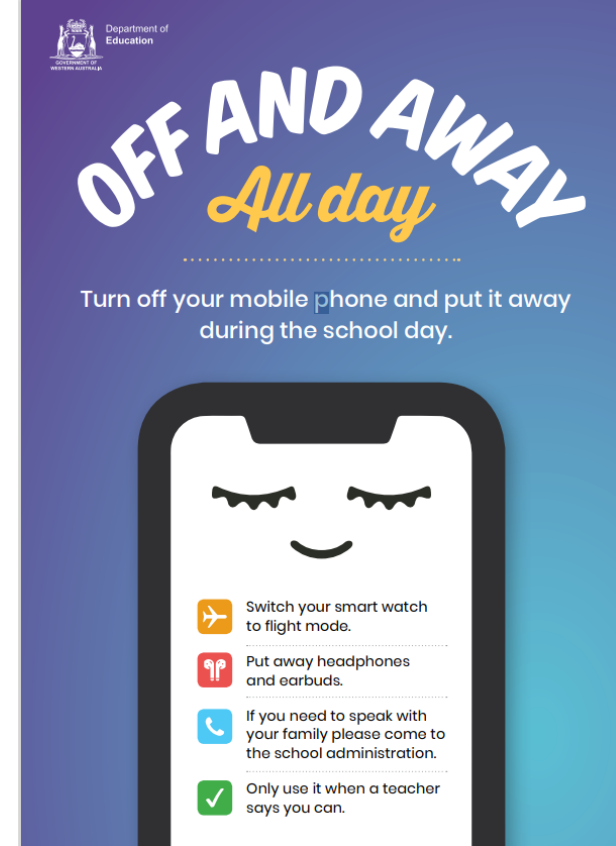
**Second offence**

**1 week**

**Third and subsequent offences**

**2 weeks**

(Parents will be contacted if their child's phone is confiscated.)





# When a student's mobile phone is confiscated:

- Student to handover the phone without protest. Refusal will escalate sanctions.
- The student must turn the phone off.
- Manager Student Services, Deputy Principal or Principal determines when the phone is to be returned, based on the number of previous offences.
- Offences do not carry over from year to year – clean slate at the beginning of each year.



Smart Watches, or other devices used for the same function (messaging/social media) are viewed as a Mobile Phone.



# OFF AND AWAY *All day*

Turn off your mobile phone and put it away during the school day.





Use of Bluetooth speakers or the like are not permitted - confiscated along with the Mobile Device.



Use of Ear buds are not permitted – these will be confiscated along with the mobile device, unless confirmed connected to Laptop and the student has teacher permission.

**Should the period of confiscation straddle a weekend, students may be able to have their phone reinstated on Friday afternoon but must return it at the beginning of the following week to complete the period of confiscation.**

**If a student (day or boarder) leaves the college at the end of day, during the period of confiscation, the return of the mobile phone will be negotiated and the time period of confiscation extended accordingly.**



## Examples of teacher directed use of mobile phone:

- **accessing personal emails for verification purposes ( e.g. Curtin Uni Ready Program)**
- **accessing specific apps relating to the school program/curriculum (e.g. Feed Calculator, Quantities Calculator).**

**If a student then accesses social media or other applications that they were not directed to, this is considered inappropriate use – phone to be confiscated as per policy.**



**TEACHER-  
DIRECTED  
LEARNING**



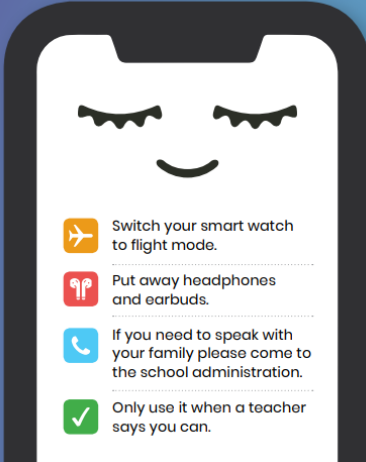
The school has plenty of clocks for students to refer to for the time, so this is not an excuse to have your Mobile Phone on and access it.




Department of Education  
EDUCATION  
WESTERN AUSTRALIA

# OFF AND AWAY

*All day*

Turn off your mobile phone and put it away during the school day.



-  Switch your smart watch to flight mode.
-  Put away headphones and earbuds.
-  If you need to speak with your family please come to the school administration.
-  Only use it when a teacher says you can.

If a student needs to make an emergency phone call or contact their parent/guardian during the school day, they may use a College phone.

If a parent/guardian needs to contact their child during the school day they contact the College Administration.

Parents/guardians of residential students are asked not contact their child during meal times, prep and after lights out. In an emergency please contact the College Administration or Female/Male Residential Mobile.

Department of Education

# OFF AND AWAY

*All day*

Turn off your mobile phone and put it away during the school day.

- Switch your smart watch to flight mode.
- Put away headphones and earbuds.
- If you need to speak with your family please come to the school administration.
- Only use it when a teacher says you can.



Department of  
Education

GOVERNMENT OF  
WESTERN AUSTRALIA

# Questions?

Shaping the future



Department of  
Education

## OFF AND AWAY *All day*

Turn off your mobile phone and put it away during the school day.

