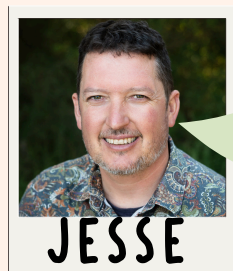
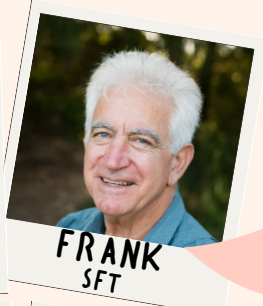


BNWPS SENIORS COMMUNICATION TREE

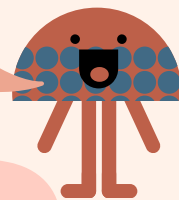


Hi there!

I can help you with that. As the Senior Team Leader, I am the best person to speak with if you want to talk about the way we learn and play in Senior School. You can email me:

jesse.hughes-welch@education.vic.gov.au

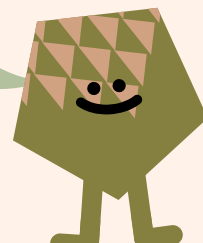
I have a question or want to share information about my child's experience in class.



Hi there!

We can help you with that. As your child's classroom teachers, we are the best people to speak with if you want to talk about your child's learning or anything that's happening in the classroom or the playground. You can contact us through Sentral or email.

I have a question about what's happening in the Senior Team.



My need is quite complex so I think I need to talk to a school leader.



Hi there!

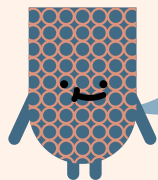
I can help you with that. I am the Acting Principal and Learning Community Leader of Seniors at School. I am here to talk about big ideas and complex situations. You can email me:

keir.jasper@education.vic.gov.au



KEIR

I think my child might need some extra support at school...



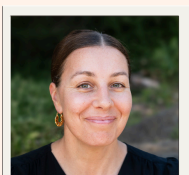
Hi there!

We can help you with that. We each lead an area of the curriculum and can talk about supporting your child. Our email addresses are below our photos.



ALICE
Maths

alice.hamilton2@education.vic.gov.au



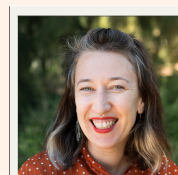
EMMA
English

emma.mallia@education.vic.gov.au



BEK
Wellbeing

rebekah.tankard@education.vic.gov.au



LILLY
Disability Inclusion

lilly.vandyk@education.vic.gov.au



School staff will attempt to respond to any communications in a timely manner.

Staff are not required to respond to messages outside school hours (8:45am – 3:45pm)