



UPWEY SOUTH
Primary School

Yard Duty and Supervision Policy



Help for non-English speakers

If you need help to understand this policy, please contact our administration team
upwey.south.ps@education.vic.gov.au or phone 9757 0200.

PURPOSE

To ensure school staff understand their supervision and yard duty responsibilities.

SCOPE

This policy applies to all teaching and non-teaching staff at Upwey South Primary School, including education support staff, casual relief teachers and visiting teachers.

POLICY

Appropriate supervision is an important strategy to monitor student behaviour and enables staff to identify and respond to possible risks at school as they arise. It also plays a vital role in helping schools to discharge their duty of care to students.

The Principal is responsible for ensuring that there is a well organised and responsive system of supervision and yard duty in place during school hours, before and after school, and on school excursions and camps and other school activities.

School staff are responsible for following reasonable and lawful instructions from the Principal, including instructions to provide supervision to students at specific dates, times and places. Supervision should be undertaken in a way that identifies and mitigates risks to child safety.

Before and after school

Upwey South Primary School's grounds are supervised by school staff from 8:45am until 9:00am before school, and from 3:30pm until 3:45pm after school. During these times, supervising staff may be found moving around the school to support students and their families. Outside of these hours, school staff will not be available to supervise students.

Parents and carers will be advised through regular reminders in our newsletter that they should not allow their children to attend Upwey South Primary School outside of these hours. Families will be

encouraged to refer to <https://theircare.com.au/> for more information about the before and after school care facilities available to our school community.

If a student arrives at school before supervision commences at the beginning of the day, the Principal or nominee staff member will, as soon as practicable, follow up with the parent/carer to:

- advise of the supervision arrangements before school
- request that the parent/carer make alternate arrangements.

If a student is not collected before supervision finishes at the end of the day, the Principal or nominee staff member will consider whether it is appropriate to:

- attempt to contact the parents/carers
- attempt to contact the emergency contacts
- place the student in an out of school hours care program (if available and the parent consents)
- contact Victoria Police and/or Child Protection to arrange for the supervision, care and protection of the student.

Yard duty

All staff at Upwey South Primary School are expected to assist with yard duty supervision and will be included in the school's roster.

Within the yard duty roster, there are three main supervisory roles which occur on a daily basis:

- **supervision by zone:** this is indicated by a staff member wearing a yellow high-vis vest
- **roaming student support:** this is indicated by a staff member wearing a pink high-vis vest.

The Principal or a delegate is responsible for preparing and communicating the yard duty roster on a regular basis. At Upwey South Primary School, school staff will be designated a specific yard duty area to supervise, noting that adjustments to these areas of supervision may be made based upon data tracking of yard-related incidences.

Yard duty equipment

School staff must:

- wear a provided safety/hi-vis vest whilst on yard duty. Safety/hi-vis vests are provided for each staff member.
- carry the yard duty first aid bag at all times during supervision. Yard duty first aid bags are provided to each staff member.
- be familiar with the yard duty information pack containing student health and safety information.

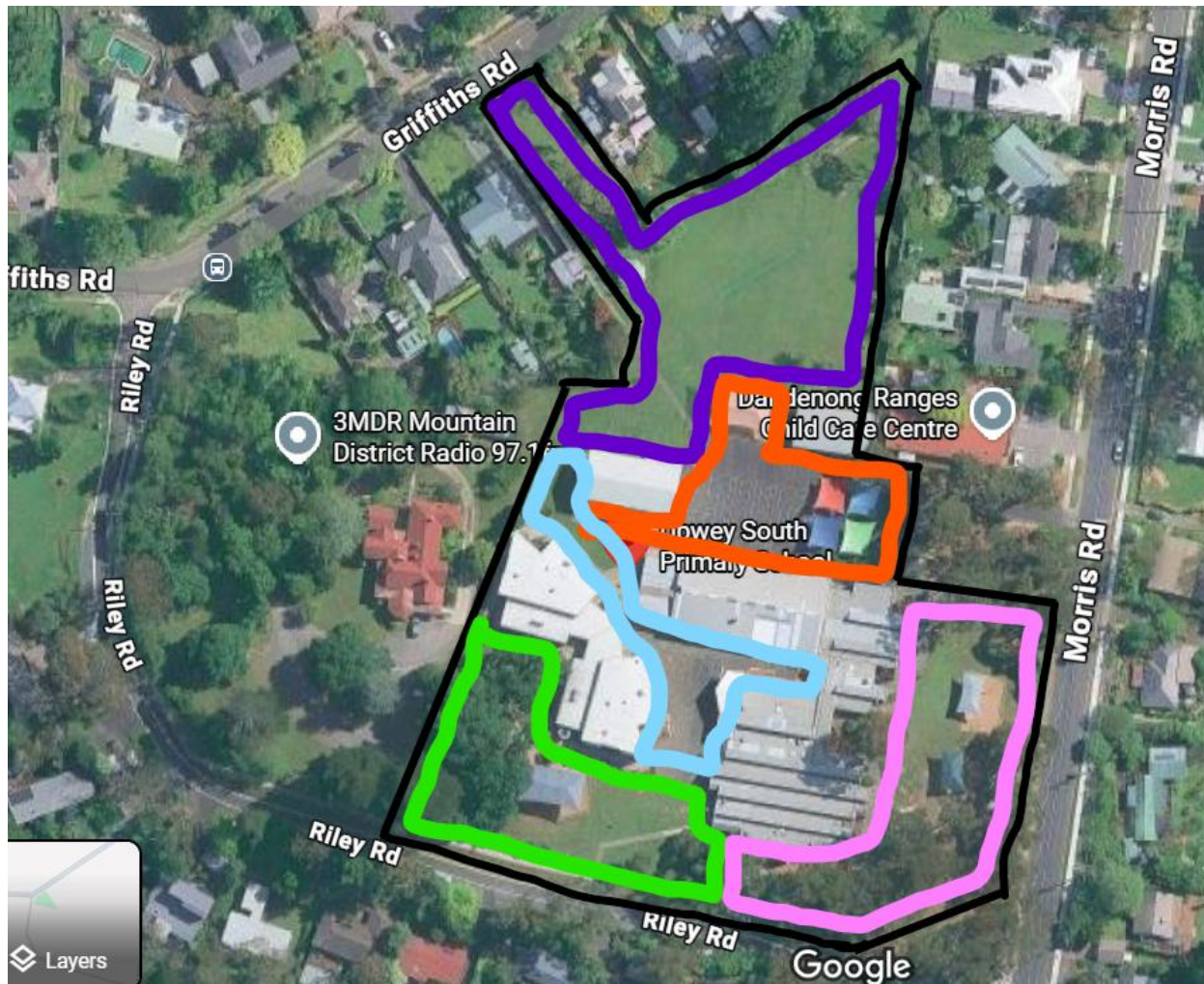
Yard duty responsibilities

Staff who are rostered for yard duty must remain in the designated area until they are replaced by a relieving staff member.

At Upwey South Primary School, during regular daily practice there is no shift changeover of yard duty supervision within a recess period. Upwey South Primary School has three 30 minute recess breaks, with supervising staff remaining on duty for the entire 30 minute duration.

Yard Duty Zones

There are eight designated yard duty areas for our school, which are:



Indicated on map by coloured zone <i>(note: zone colours are for illustration purposes only, and are not referenced by staff or the school community)</i>	Area (eight designated yard duties per recess)
Green zone	Forest Oak play area/ junior playground
Pink zone	Morris Road play area
Orange zone	Basketball court/senior playground
Blue zone	Stage/ chill out area
Purple zone	Oval
Library	*No marked on map
Roaming Let's Talk Mentors (pink high-vis)	X2 not marked on map

During yard duty, supervising school staff must:

- methodically move around the designated zone ensuring active supervision of all students
- where safe to do so, approach any unknown visitor who is observed on school grounds without a clear legitimate purpose, and ensure they have a visitor pass and have signed in (excluding drop off and collection periods)
- ensure students remain in their designated year level zones
- be alert and vigilant
- intervene immediately if potentially dangerous or inappropriate behaviour is observed in the yard
- enforce behavioural standards and implement appropriate consequences for breaches of safety rules, in accordance with any relevant disciplinary measures set out in the school's Student Engagement policy
- ensure that students who require first aid assistance receive it as soon as practicable
- log any incidents or near misses as appropriate through the school's Chronicle Tracking Software.

If being relieved of their yard duty shift by another staff member (for example, if the shift is 'split' into two consecutive time periods), the staff member must ensure that a brief but adequate verbal 'handover' is given to the relieving staff member in relation to any issues which may have arisen during the first shift.

If the supervising staff member is unable to conduct yard duty at the designated time, they should contact their Level Leader with as much notice as possible prior to the relevant yard duty shift to ensure that alternative arrangements are made.

If the supervising staff member needs to leave yard duty during the allocated time, they should contact their Level Leader but should not leave the designated area until the relieving staff member has arrived in the designated area.

If the relieving staff member does not arrive for yard duty, the staff member currently on duty should contact the school office and not leave the designated area until a relieving staff member has arrived.

Students will be encouraged to speak to the supervising yard duty staff member if they require assistance during recess or lunchtime.

Classroom Supervision

The classroom teacher is responsible for the supervision of all students in their care during class.

If a teacher needs to leave the classroom at any time during a lesson, they should first contact their Level Leader for assistance. The teacher should then wait until a replacement staff member has arrived at the classroom before leaving.

School activities, camps and excursions

The Principal and leadership team are responsible for ensuring that students are appropriately supervised during all school activities, camps and excursions, including when external providers are engaged to conduct part or all of the activity. Appropriate supervision will be planned for school activities, camps and excursions on an individual basis, depending on the activities to be undertaken and the level of potential risk involved, and will follow the supervision requirements in the Department of Education and Training [Excursions Policy](#).

Digital devices and virtual classroom

Upwey South Primary School follows the Department's [Cybersafety and Responsible Use of Technologies Policy](#) with respect to supervision of students using digital devices.

During circumstances which require the school to move to Remote Learning, Upwey South Primary School will also ensure appropriate supervision of students participating in remote and flexible learning environments while on school site. In these cases, students will be supervised within areas as relevant to the particular circumstances.

While parents are responsible for the appropriate supervision of students accessing virtual classrooms from home:

- student attendance will be monitored
- any wellbeing or safety concerns for the student will be managed in accordance with our usual processes – refer to our Student Wellbeing and Engagement Policy and our Child Safety Responding and Reporting Policy and Procedures for further information.

Students requiring additional supervision support

Sometimes students will require additional supervision, such as students with disability or other additional needs. In these cases, the Principal or delegate will ensure arrangements are made to roster additional staff as required. This may include on yard duty, in the classroom or during school activities.

Supervision of student in emergency operating environments

In emergency circumstances our school will follow our Emergency Management Plan, including with respect to supervision. In the event of any mandatory period of remote or flexible learning our School will follow the operations guidance issued by the Department.

COMMUNICATION

This policy will be communicated to our school community in the following ways:

- Available publicly on our school's website and distributed via community newsletters
- Included in staff induction processes and annual staff training
- Included in volunteer induction processes and training for relevant volunteers
- Discussed an annual staff briefings or meetings
- Included in staff handbook or manual
- Hard copy available from school administration upon request

Information for parents and students on supervision before and after school is available on our school website and parent reminders are sent at the beginning of each term via our regular communication channels.

FURTHER INFORMATION AND RESOURCES

The Department's Policy and Advisory Library (PAL):

- [Child Safe Standards](#)
- [Cybersafety and Responsible Use of Technologies](#)
- [Duty of Care](#)
- [Excursions](#)
- [Supervision of Students](#)
- [Visitors in Schools](#)

POLICY REVIEW AND APPROVAL

Policy last reviewed	August 2025
Approved by	Principal
Next scheduled review date	August 2027

This policy will also be updated if significant changes are made to school grounds that require a revision of Upwey South Primary School's yard duty and supervision arrangements.