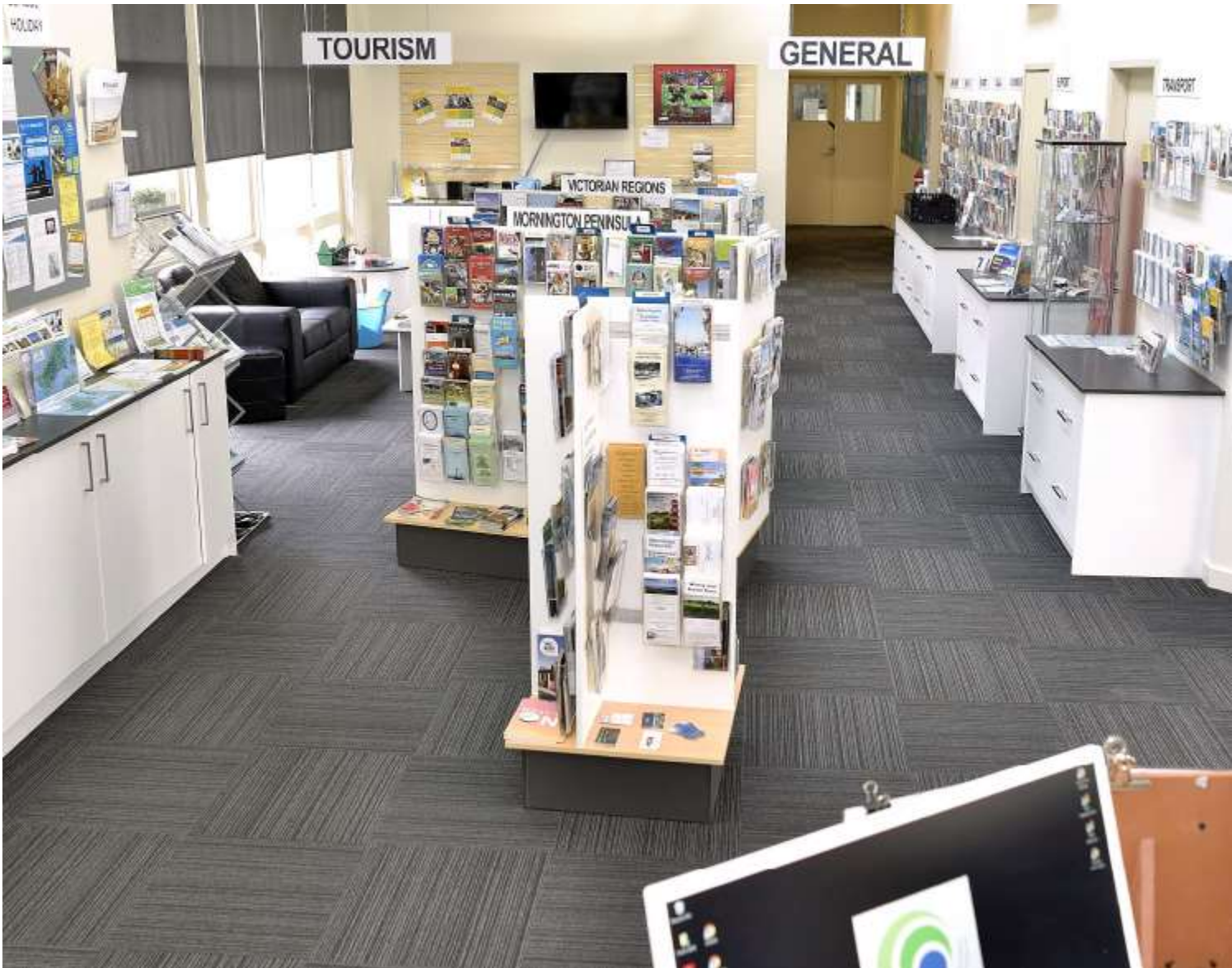


# Community Support Services



As a result of COVID-19 the Mornington Community Information and Support Centre is now unfortunately closed to the public

**However, we are still providing food and support services by phone or email.**

**Phone: 59751644 or 0492 818 833**

**Email: [support@mcisc.org.au](mailto:support@mcisc.org.au)**

Mornington Community Information and Support Centre provides information, referral, and support services to assist people experiencing personal and financial difficulties in Mornington, Mt Martha, Mt Eliza, and Moorooduc.



## Crisis Support and Emergency Relief

Southern Peninsula Community Support and Information Centre offers support to people in crisis in a welcoming and non-judgmental environment. Our services are provided by trained and friendly volunteer staff from the local community who are:

- Readily available to listen and offer impartial support
- Respect the right of the individual to make their own decisions
- Link people into services appropriate to their individual needs

Crisis support staff provide information, referral and practical assistance in the form of material aid.

Emergency relief material aid is available to Southern Peninsula residents on a low income who are experiencing financial hardship and a crisis or emergency event and may include food vouchers, transportation assistance, medical needs and other financial aid. Guidelines and eligibility criteria apply. The service aims to assist individuals and families to be independent and aware of their rights, develop positive outcomes and create sustainable solutions.

ELIGIBILITY: SPCSIC services are available to people who live in the Southern Mornington Peninsula area (see map below)



Many services have no other criteria for eligibility, whereas others may be accessed only by those who are on a low income or who have, or are eligible for, a Health Care Card.

And includes the following postcodes:

3916	3928	3929	3936
3937	3938	3939	3940
3941	3942	3943	3944

### Location

878 Point Nepean Road Rosebud VIC 3939

### Telephone

03 5986 1285

### Opening hours

Telephone Service: Monday to Friday: 10:00 am – 3:00 pm

### Support Service & Emergency relief hours

Telephone Service: Monday to Friday: 10:00 am – 3:00 pm



Western Port Community Support is a not for profit community based organisation providing a wide range of services to families and individuals residing in the Western Port region. Providing a free and comprehensive support, information and advocacy service, we work closely with other social and community welfare organisations to provide the best service to all our clients.

Our services are available to residents in the following locations:

- Hastings
- Baxter
- Langwarrin South
- Pearcedale
- Somerville
- Tuerong
- Merricks
- Point Leo
- Shoreham
- Bittern
- Crib Point
- Hmas Cerberus
- Balnarring
- Somers
- Flinders

185 High Street Hastings Vic 3915

Ph 03 5979 2762

<https://wportcomsupport.org.au>

Open Monday – Friday 10.00 – 4.00

#### EMERGENCY RELIEF

We are committed to providing access to Emergency Relief (food and material aid) to those who otherwise may go without.

#### HOUSING PROGRAM

The Housing and Homelessness Program has been established to assist those clients who are either homeless or in acute housing crisis.

#### FAMILY SUPPORT PROGRAM

Our Family Support Caseworker is employed to support members of the community requiring more intensive ongoing assistance.

#### INFORMATION SUPPORT

Our volunteers are able to advocate for community members who struggle to make their needs known to other community agencies.

#### BILL ASSISTANCE

We may be able to assist you with payment and advocate on your behalf to establish an affordable payment plan with your provider.

#### EDUCATION ASSISTANCE

Every year we provide support to those parents struggling with the expenses associated with the return to school in February.

#### NILS

The No Interest Loan Scheme (NILS) is available to anyone on an income less than \$45,000 per annum for singles or \$60,000 for couples.

#### FINANCIAL COUNSELLING

This program aims to help people address their financial problems, manage their debt and make informed choices about their money in the future.

#### TAX HELP PROGRAM

Our ATO trained and accredited community volunteers, provide a free and confidential service to help people complete their tax returns.

#### COUNSELLING

Our trained psychologist offers free counselling for a variety of issues. Available for individuals, couples and families.

#### CHRISTMAS PROGRAM

Every year along with our community partners, we offer over 300 food hampers and toys through our Christmas Giving Program.

#### VOLUNTEER HUB

The Volunteering Information Hub aims to promote and encourage volunteering in our local community.