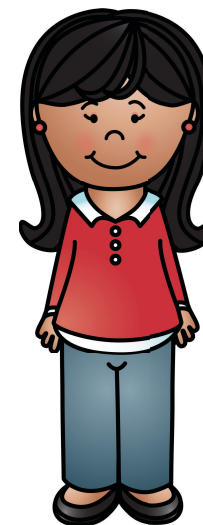
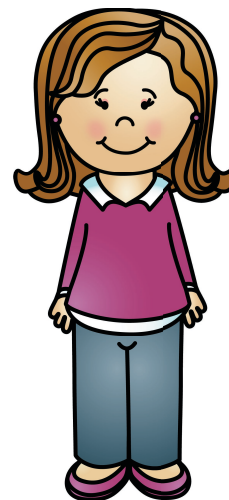
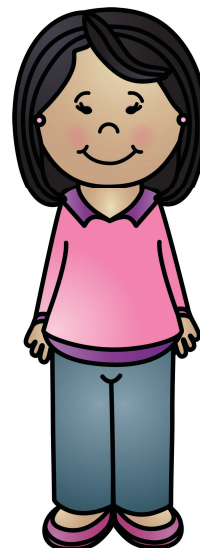
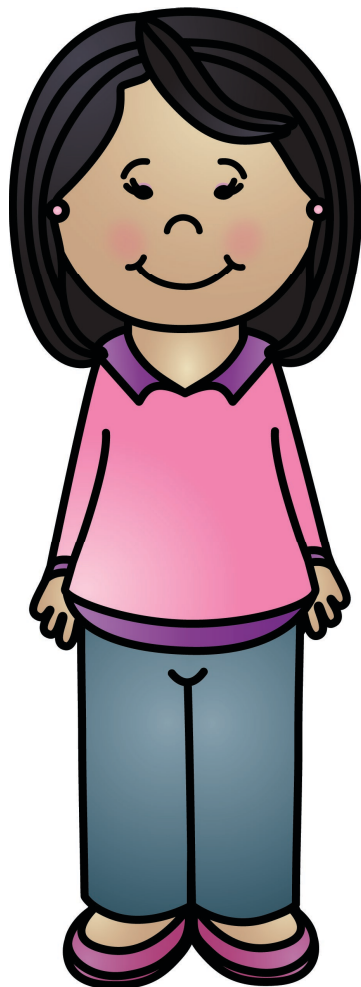
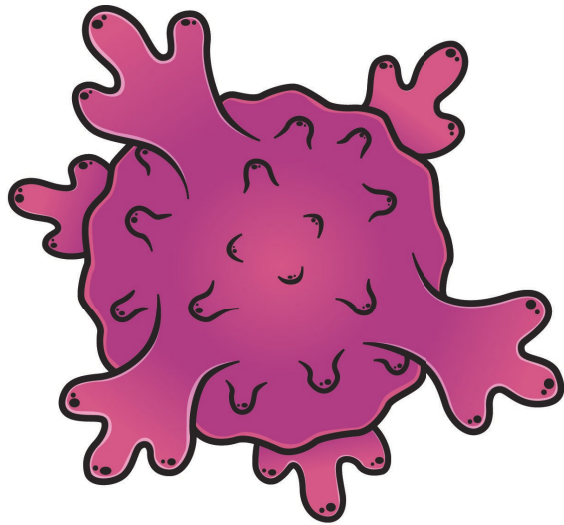


My teacher  
has cancer

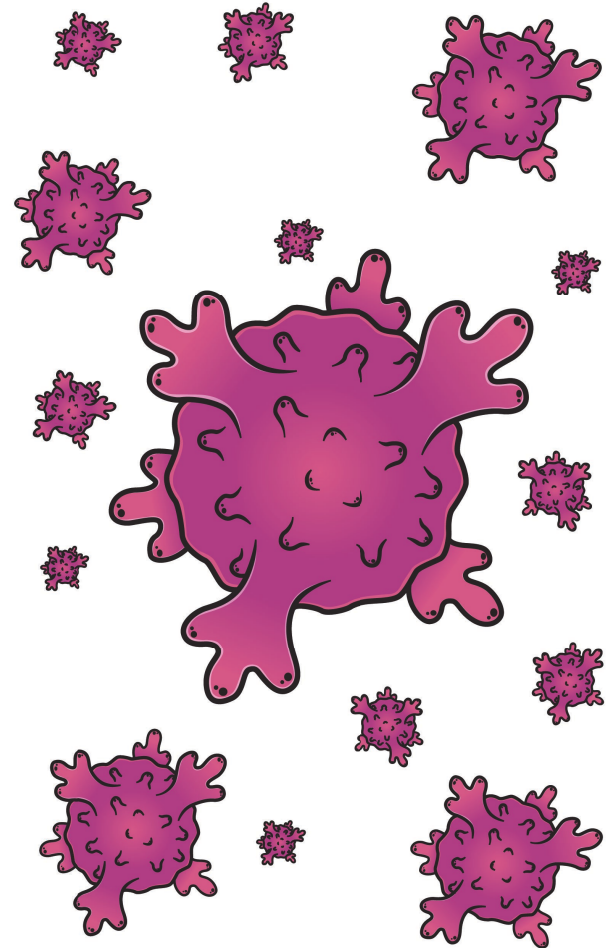


My teacher is sick.

cancer

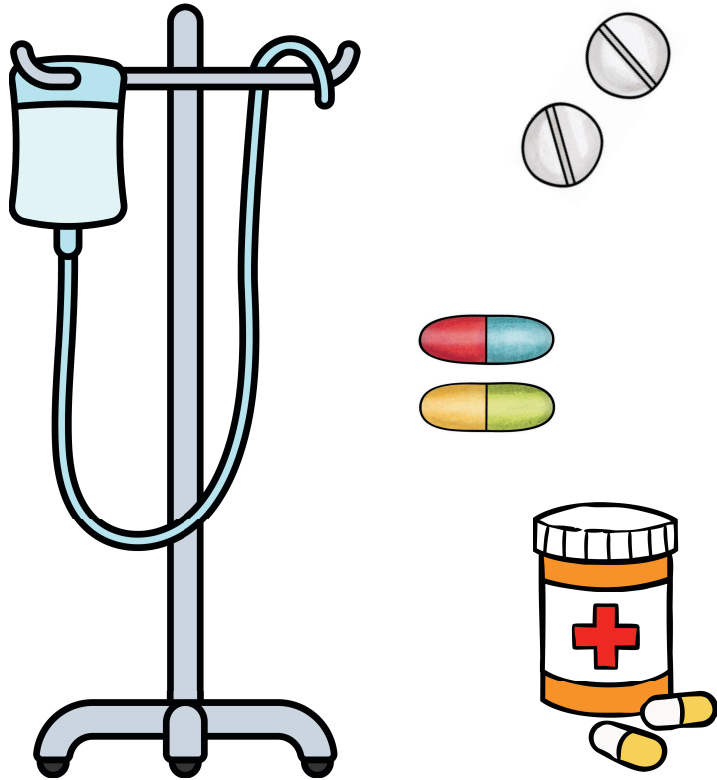


She has something  
that doctors call cancer.



Cancer is when sick cells  
grow too fast in the body. You  
cannot catch cancer from  
someone else.

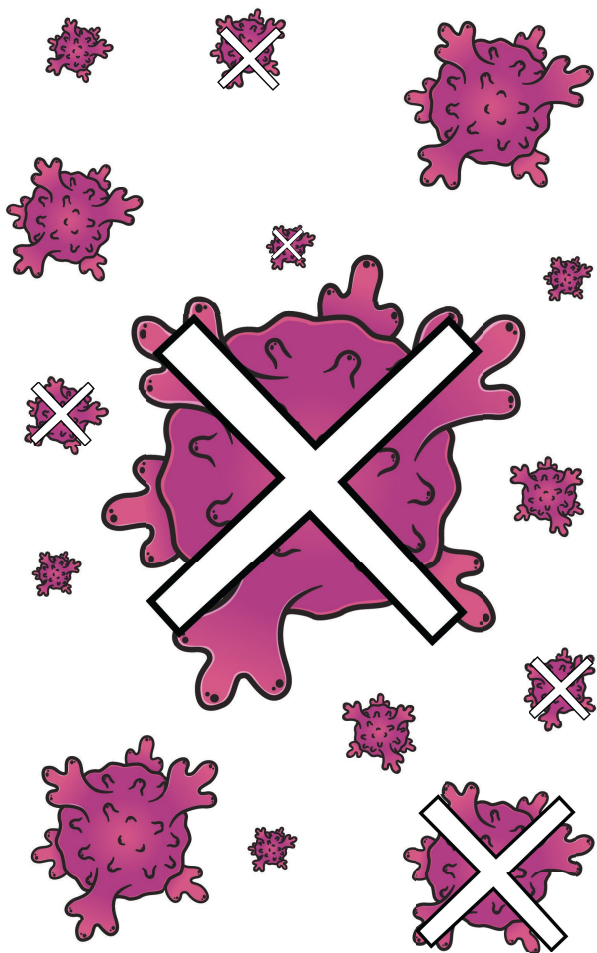
chemo



Most people who have cancer need to have chemotherapy. Another word for it is "chemo".



Chemo is a medicine that works on getting rid of the sick cells.



It can take a long time for chemo to make the sick cells go away.

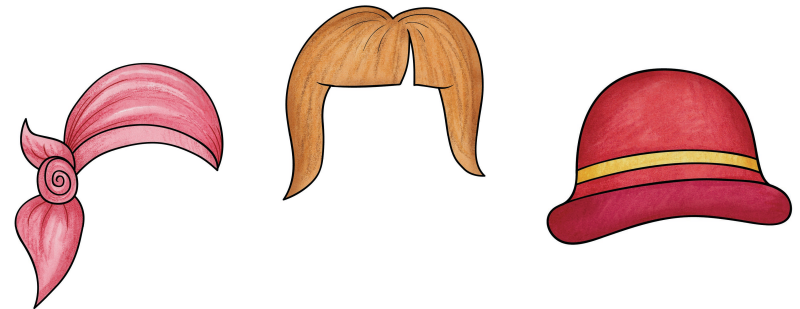
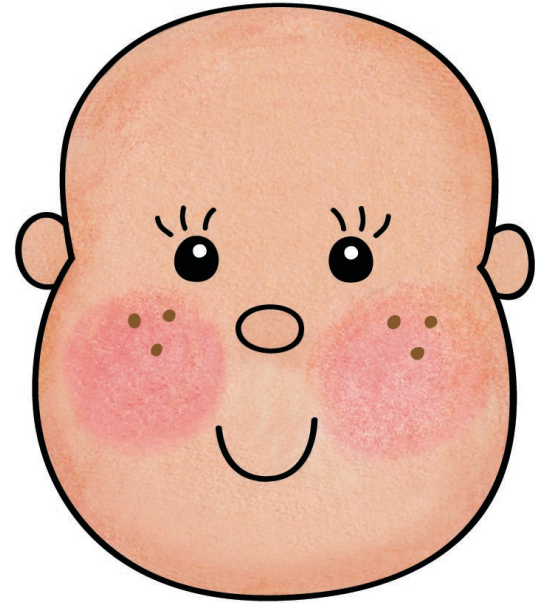


When the chemo is making the sick cells go away, it can also make the person feel yucky. I might have to be a little more cautious and gentle around around my teacher.

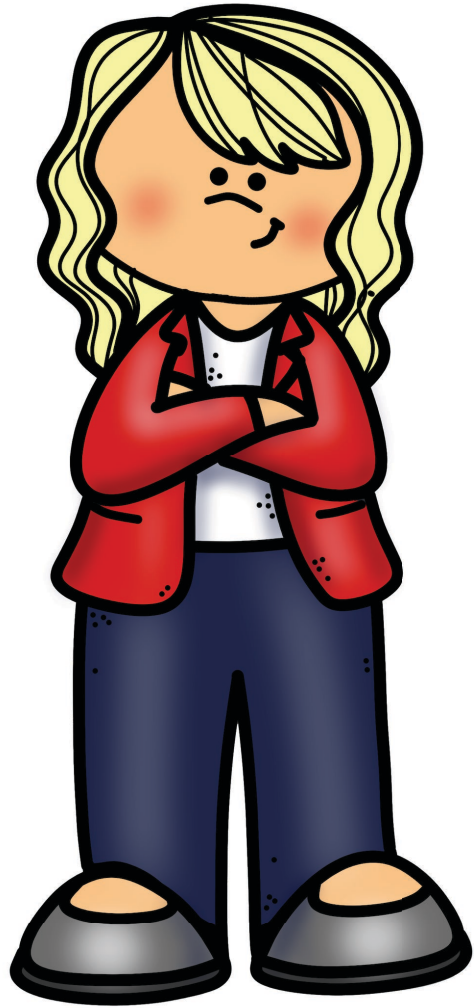




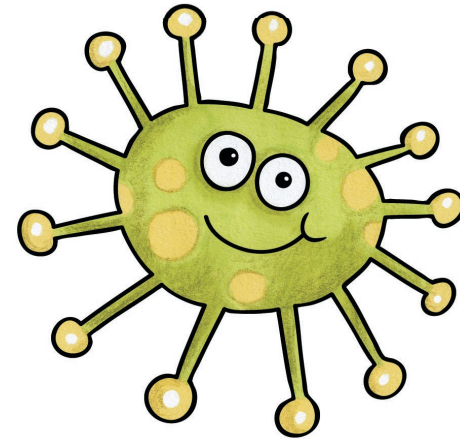
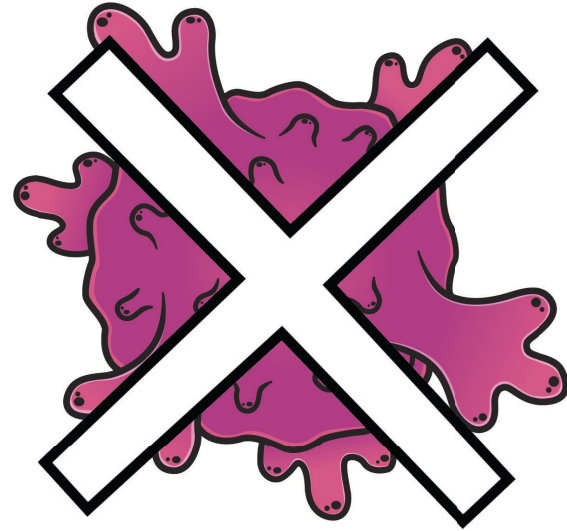
Chemo can make people throw up and feel very tired.



It can also make their hair fall out. Some people might wear a scarf, wig or hat on their head.



Hair grows back after the chemo medicine is done.

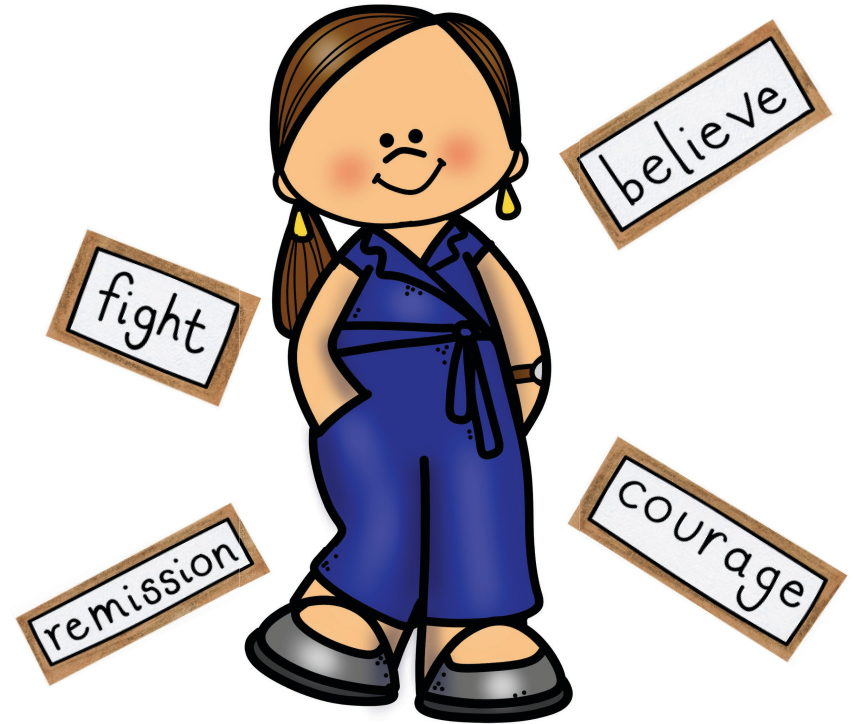


The doctors hope that the chemo will get rid of the sick cells so that the healthy cells can grow!



If I have questions or worries  
or feel scared I can talk to  
my parents or to my teacher.  
It is important to talk about it!

brave



My teacher is very brave and  
strong for fighting cancer!

Terms Of Use



# AUTISM little LEARNERS

Resources and ideas for families *and* educators

This product is free, and I give you permission to distribute, copy and use for educational purposes. You may not post it as your own. Please give credit to Autism Little Learners or Tara Tuchel and refer people to my website:

[www.autismlittlelearners.com](http://www.autismlittlelearners.com)

Connect!



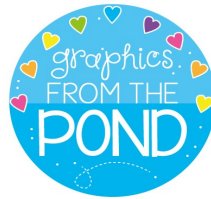
AUTISM little LEARNERS

WEBSITE/BLOG



Instagram

Credits



Thank you for purchasing this activity from my store! I hope you find these materials as useful as I have in my classroom. Be sure to come back for newly added products!

Thank You!

♥ tara TUCHEL

Speech/Language Pathologist