



holmesglen

DEVELOPING INDEPENDENCE PROGRAMS

VCAL Foundation • Transition Education • Work Education



Why Holmesglen?

At Holmesglen, we are a community that will go on a journey with you to help you achieve your goals.

Our values are Ambition, Scholarship, Passion, Integrity, Respect and Excellence.

We have small class sizes, on-campus support services; such as counsellors and disability support officers, an on-site medical centre, as well as a Learning Skills Centre.

We pride ourselves on our support and values. We have several courses that offer additional support to suit your needs. We offer assistance with vocational learning, as well as general life skills. These courses form a solid foundation for you to become more involved with your community, and will help you move into further study and work.



The Holmesglen experience

Activities and camps



Our Developing Independence Programs learners take part in a three-day camp and a range of social activities while they study with us.

Counselling and support services



We provide free and confidential counselling for all students. This includes welfare, study, personal or career counselling.

Disability support



We can help you with enrolment and orientation assistance, alternative study materials, adaptive technology, auslan interpreters, and more. (You will need to supply medical/professional documentation to register for this service.)

Facilities



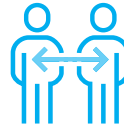
We have student recreational rooms fitted out with table tennis tables, couches, TVs and more to keep you entertained and relaxed. And we have multiple cafeterias, courtyards, dedicated prayer rooms, on-campus bookstores, and more.

Indigenous student support



We have an Indigenous Education Consultant, who is available to assist you if you are an Indigenous student.

Industry connections



We are a preferred quality training provider for many organisations. This means that you will have access to work experience or future employment opportunities while you study.

Library



Our Library is a great place to research, study or work on group assignments. Our friendly library liaisons are also available to help with your course needs.

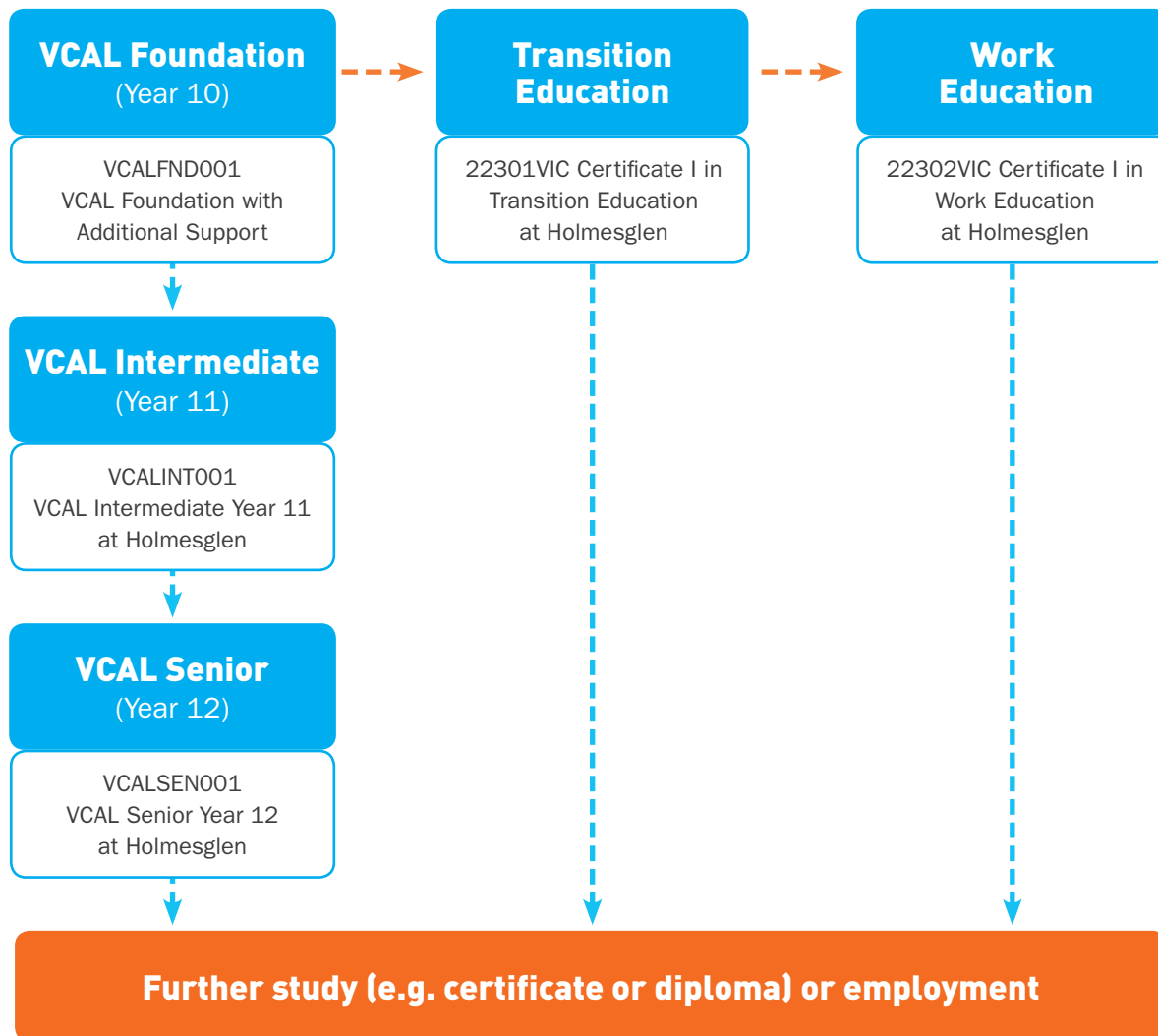
Online community



At Holmesglen, you have access to a social networking site by students for students. It's a great place to seek advice, ask questions, share your knowledge and connect with others. Visit community.holmesglen.edu.au

Course pathways for developing independence

There is more than just one way to develop your life skills. VCAL (Victorian Certificate of Applied Learning) is your Year 11 and Year 12 at Holmesglen's Vocational College, instead of secondary school.



Meet Tia Horrobin

Tia completed a number of work experience placements during her 22302VIC Certificate I in Work Education studies, including at Spotlight and Target. Her Target supervisor reported she was one of the hardest working students they had seen.

Achievement comes through hard work, and Tia's teachers saw her commitment grow through every facet of her Holmesglen Community and Transitional Education studies.

Tia has previously volunteered at a local primary school and hopes to follow a study pathway into education support and become a teacher's aide in the future.

**Outstanding Individual
Achievement Award winner -
Holmesglen Gala Awards**



VCAL Foundation with Additional Support

Code: VCALFND001

Length: 36 weeks

Start: February

Study mode: Full time

Campus: Chadstone

Entry requirements: Applicants must be 16 - 19 years old and:

- Be interested in gaining employment and/or progressing to further study
- Have the potential to travel independently and take part in all course activities.

During a meeting, learners will be asked to complete a literacy and numeracy task to assess your support needs. A teacher will help you to complete the tasks. If you are under the age of 17, you must have a Transition from School Form signed by your last school principal. This is a requirement under the Education and Training Reform Act 2006. Students over 18 will need a current police check to take part in voluntary work, and a Working with Children Check.

You will need to come to a meeting with a parent or carer to find out if the course will meet your needs.

You will choose seven electives. Electives are subject to change.

Industry-specific options

Carpentry and joinery, floristry, furniture trades, fibrous plastering, glass and glazing, horticulture, hospitality, outdoor education, painting and decorating, retail, sport and fitness, technical drawing, tile laying and tour guiding

Creative and personal development options

Art, cartooning, digital design, group art, kitchen and garden, manga and anime, mosaics, mural art, music and storytelling, photography and textiles

Career opportunities: Open or supported employment opportunities, traineeships and apprenticeships.

Overview: Our programs are tailored for students who need an alternative to the traditional education model, or are in need of extra support in their learning and development of their social skills.

Our subjects are hands-on with projects based on real-world situations with classes that will be adapted to suit your interests, abilities and strengths.

The four main areas of focus are:

- Work-related skills
- Literacy skills and numeracy skills
- Personal development skills
- Industry-specific skills

You will also have the choice of selecting from a wide range of elective subjects.

You will study in small class sizes of 10 or 11 – with four weeks of structured workplace learning and a three-night camp.

Meet Joshua Finlay

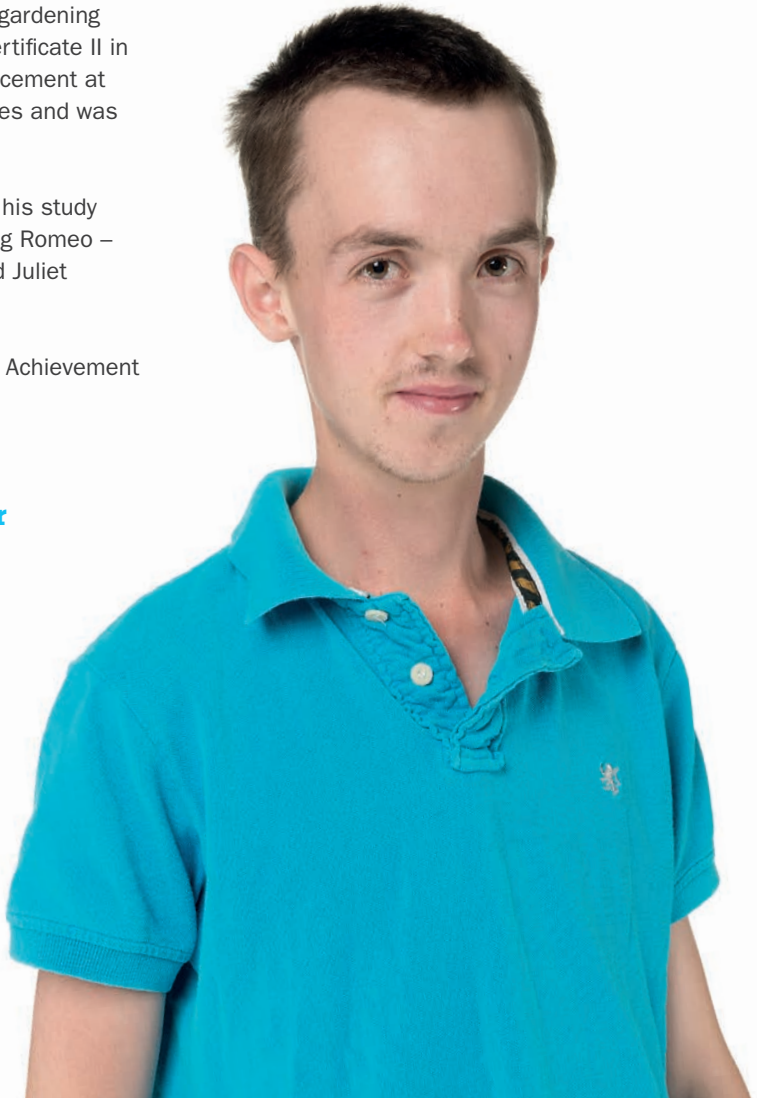
Josh joined Holmesglen in 2013 (studying in the VCAL Foundation program) and quickly welcomed any opportunities afforded to him.

Having completed his 22301VIC Certificate I in Transition Education and the 22302VIC Certificate I in Work Education, Josh then followed his gardening interests when studying the AHC20416 Certificate II in Horticulture. He completed a trial work placement at Heidelberg Golf Club as a part of his studies and was offered an apprenticeship.

Josh's strengths were not just confined to his study areas. He performed the lead role – playing Romeo – in a student drama production, Romeo and Juliet Zombie Apocalypse.

He is a Holmesglen Outstanding Individual Achievement student award winner.

"I found Holmesglen to be a very caring education environment for young people."



Certificate I in Transition Education

Code: 22301VIC

Length: 36 weeks

Start: February

Study mode: Full time

Campus: Chadstone, Moorabbin

Entry requirements: You will need to have the potential to travel independently, take part in all course activities, a desire to complete the course, an interest in gaining employment, progressing to further study or taking part in community life.

Career opportunities: Open or supported employment, voluntary work, community activities.

Overview: Are you 16-19 years old? Do you need support with your learning and/or social skills? Did you attend a specialist school or get help from a teacher's aide in class? This course gives you the opportunity to take part in a range of subjects that focus on the skills you need at work and in everyday life.

You will complete projects that will help you to: develop social skills; become more confident; work as part of a team; improve your literacy and numeracy skills; use technology safely; improve your health and fitness; and become more independent. You will study in groups of 10.

The course includes four weeks of work placement and a three-night camp.



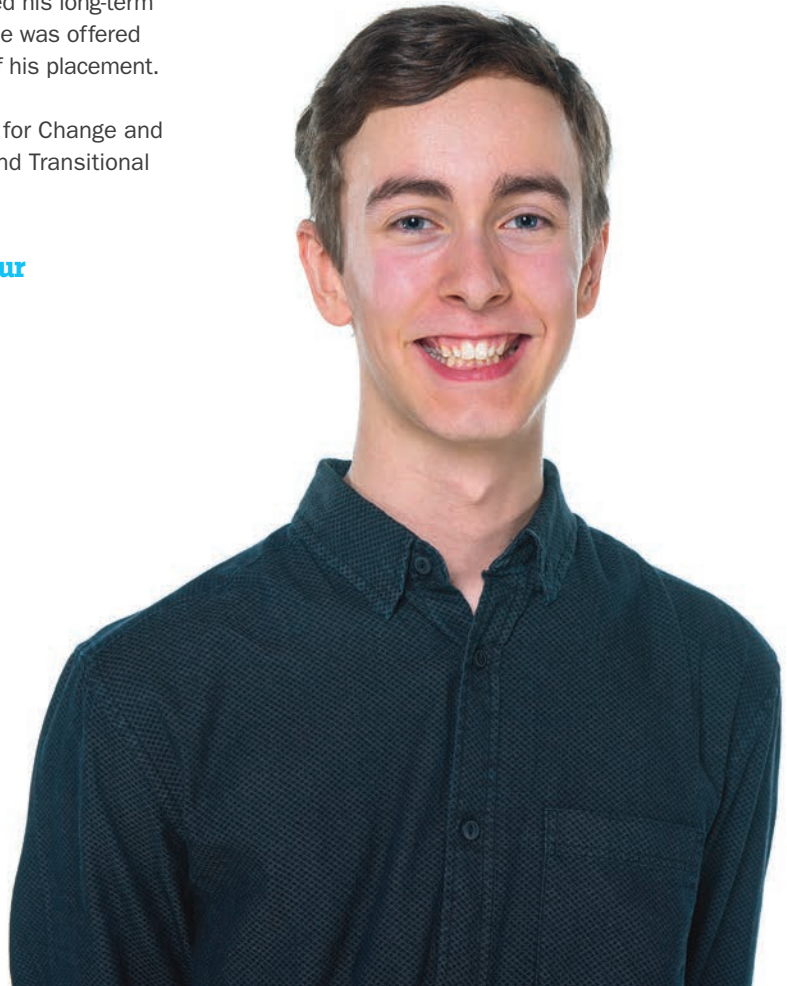
Meet Dale Hands-Otte

For Dale, Holmesglen represented much more than a classroom – it was his chance to gain new knowledge and participate in the community.

During his time studying transition education, Dale completed work experience with employers along the Mornington Peninsula, including Woolworths and Bunnings. This work experience supported his long-term goal to work in retail management, and he was offered employment at Woolworths as a result of his placement.

Dale was also a part of our annual Run for Change and involved with a number of Community and Transitional Education Department events.

Dale was a student finalist at our Holmesglen Gala Awards.



Certificate I in Work Education

Code: 22302VIC

Length: 36 weeks

Start: February

Study mode: Full time

Campus: Chadstone, Moorabbin

Entry requirements: You will need to have the potential to travel independently and take part in all course activities, a desire to complete the course and an interest in gaining employment and/or progressing to further study.

Career opportunities: Open or supported employment, voluntary work.

Overview: Are you 16 - 19 years old? Do you need support with your learning and/or social skills? Did you attend a specialist school or get help from a teacher's aide in class? This course will help you learn the skills you will need to be successful at work. You will take part in subjects and projects that will help you develop: job-seeking skills, work-readiness skills, time-management skills, personal presentation skills, team-work and communication skills.

You may also be able to study one of these courses as part of your program:

- SIT10216 Certificate I in Hospitality;
- AHC10316 Certificate I in Horticulture; or
- SIR10116 Certificate I in Retail Services.

You will study in groups of 10. The course includes six weeks of work placement and a two-night camp.



The Royal Children's Hospital partnership

Laura Flynn

Certificate I in Work Education graduate

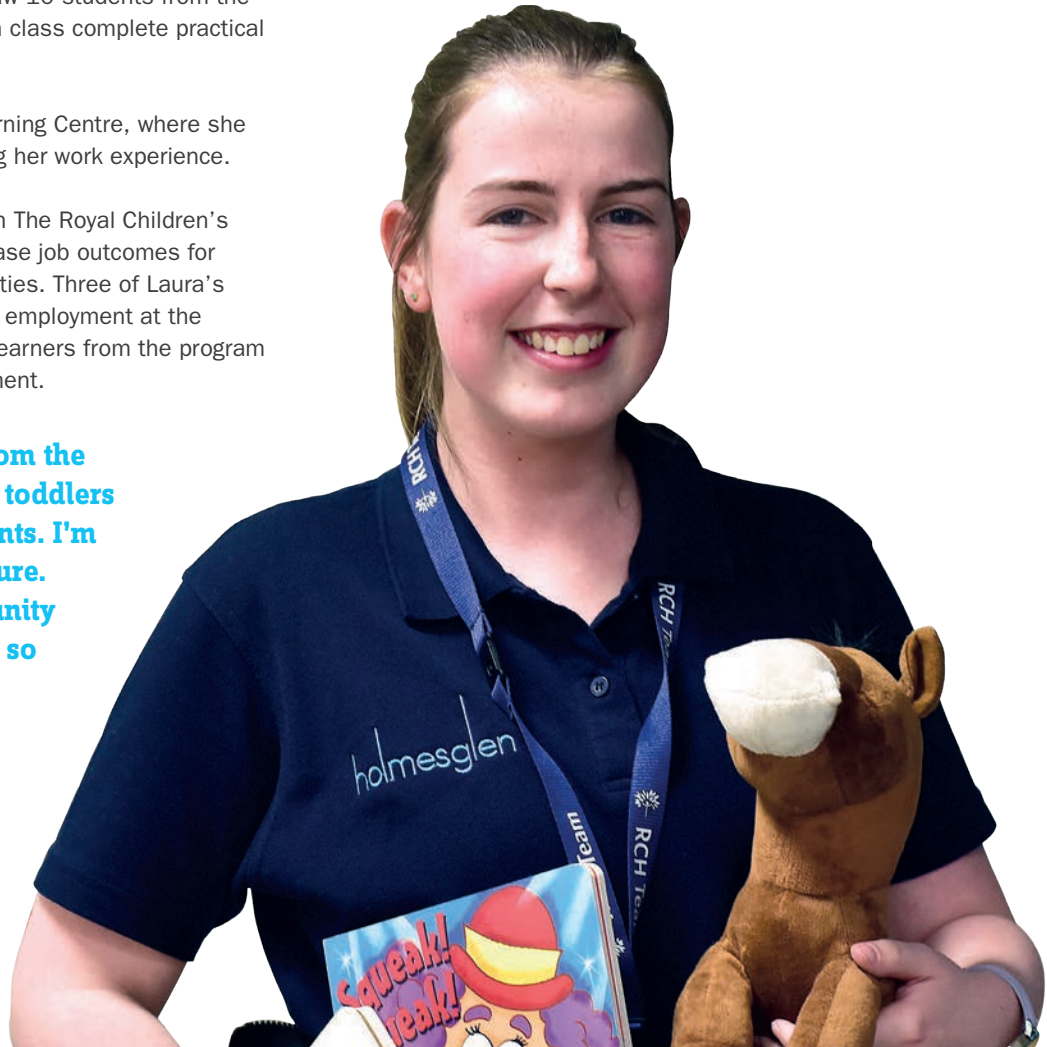
The Royal Children's Hospital
Early Learning Centre Assistant

Laura was part of our new integrated practical placement program with The Royal Children's Hospital. The pilot program saw 10 students from the Certificate I in Work Education class complete practical placements at the hospital.

Laura worked in the Early Learning Centre, where she received employment following her work experience.

Holmesglen's partnership with The Royal Children's Hospital was created to increase job outcomes for students with learning disabilities. Three of Laura's classmates were also offered employment at the hospital, and a total of eight learners from the program are engaged in other employment.

"I have learned a lot from the children - from babies, toddlers and kindergarten students. I'm very excited for the future. It's an amazing opportunity and everyone has been so supportive of me and my friends."



For more information or to apply, contact:

T: 03 9564 2067

E: workeducation@holmesglen.edu.au

W: holmesglen.edu.au

Chadstone campus

Corner Warrigal and Batesford Roads
Chadstone VIC 3148

Glen Waverley campus

595 Waverley Road
Glen Waverley VIC 3150

Moorabbin campus

488 South Road
Moorabbin VIC 3189

© Aug 2019. Holmesglen Institute.
Information published in this guide
was correct at time of printing
and is subject to change at any
time, without notice. Holmesglen
is the trading name of Holmesglen
Institute. RTO: 0416 CRICOS:
00012G. Training is delivered
with Victorian and Commonwealth
Government funding.
B2700719 CATE 12pp 200x200

