



MARIST COLLEGE ASHGROVE

COVIDSAFE SITE PLAN

Drop Off and Pick Up Points

- Players, coaches and officials are only permitted to enter the venue. Selected students (for the 1st game) and one parent per player are allowed for the open games ONLY.
- Parents and school buses are to drop off and pick up at the designated areas, during the specified times.
- Players are not to arrive more than 15min prior to the start time. At the conclusion of the match all players must vacate the venue immediately via the exit path to the pickup zone.

Entry and Exit Paths

- Please observe and obey all entry and exit paths as per map.

Site Registration

- All players and adults including coaches, officials, staff, parent spectators (opens only) and first aid officers etc must register their attendance at the registration desk.

Hygiene

- Utilise the hand sanitiser before, during and after the game. These are located at the many sanitiser stations at the venue.
- Shower at home both pre and post-game.
- Come to the venue dressed in playing uniform. There will be no access to changerooms. Toilet facilities will be available.

Hygiene cont.

- Players are not to bring any unnecessary equipment e.g. basketballs.
- Follow the displayed signage at the venue and social distance at 1.5m always.
- If you are displaying signs and symptoms of feeling unwell **STAY AT HOME** and seek appropriate medical advice.
- Those who display symptoms will not be permitted entry.

Canteen Facilities

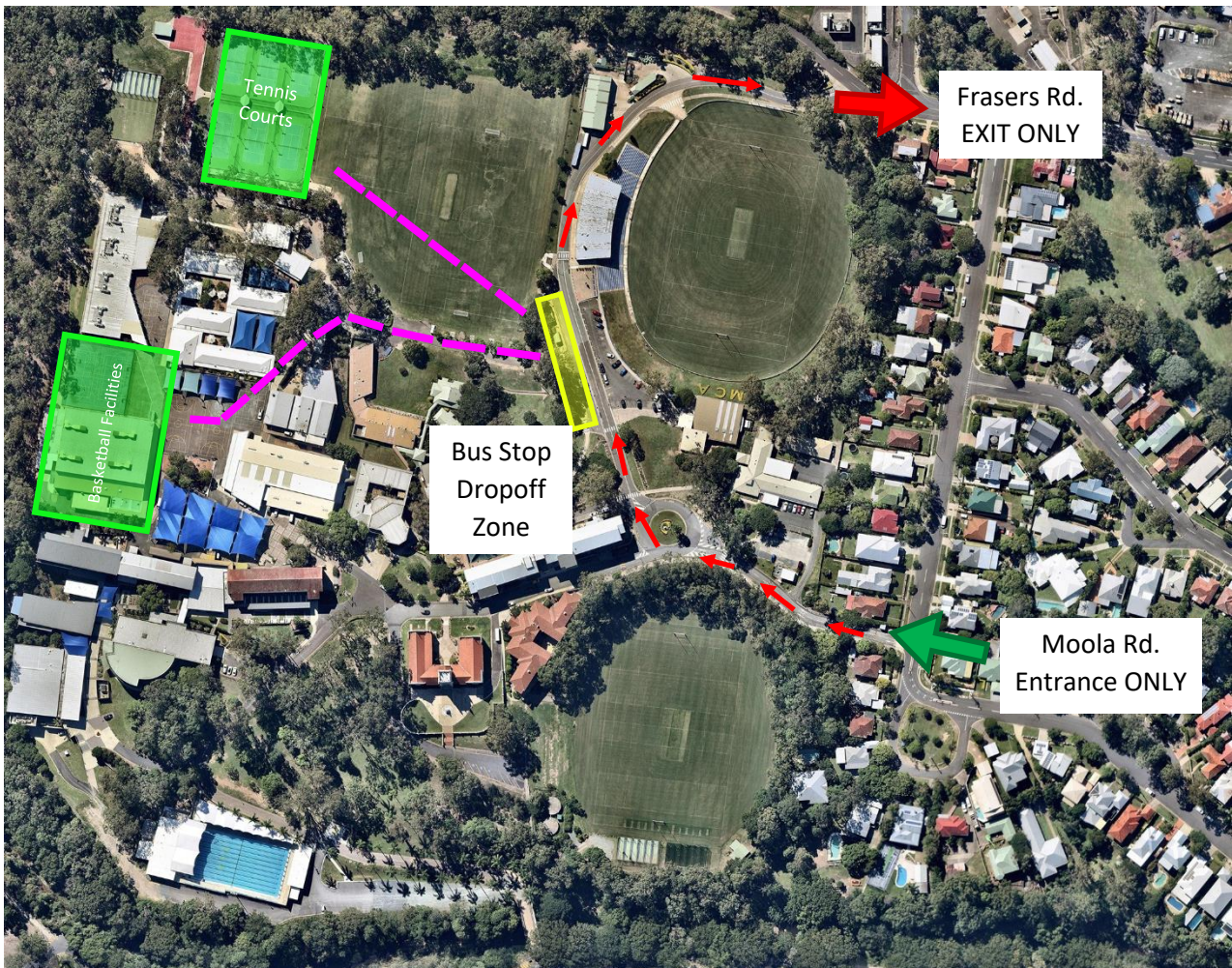
- No canteen facilities are available.
- All players, coaches, officials and spectators are required to bring their own water bottles to the venue. Two full water bottles per player is recommended. Water fountains will be closed.

Venues

- Venues will be cleaned before and after each match.
- There will be an appointed COVID Officer at the venue.

Download the COVID Safe App

- We encourage all members of the community to download the COVID Safe App to assist with contact tracing in the event of a contracted case whilst at any AIC sporting event.



 Drop-Off Zone

 Direction of Traffic

 Entrance to College Grounds

 Venues

 Walking Direction to Venues

 Exit from College Grounds





CHAMPAGNAT CENTRE

COVIDSAFE SITE PLAN

Drop Off and Pick Up Points

- Players, coaches and officials are only permitted to enter the venue. Selected students (for the 1st game) and one parent per player are allowed for the open games ONLY.
- Parents and school buses are to drop off and pick up at the designated areas, during the specified times.
- Players are not to arrive more than 15min prior to the start time. At the conclusion of the match all players must vacate the venue immediately via the exit path to the pickup zone.

Entry and Exit Paths

- Please observe and obey all entry and exit paths as per map.

Site Registration

- All players and adults including coaches, officials, staff, parent spectators (opens only) and first aid officers etc must register their attendance at the registration desk.

Hygiene

- Utilise the hand sanitiser before, during and after the game. These are located at the many sanitiser stations at the venue.
- Shower at home both pre and post-game.
- Come to the venue dressed in playing uniform. There will be no access to changerooms. Toilet facilities will be available.

Hygiene cont.

- Players are not to bring any unnecessary equipment e.g. basketballs.
- Follow the displayed signage at the venue and social distance at 1.5m always.
- If you are displaying signs and symptoms of feeling unwell **STAY AT HOME** and seek appropriate medical advice.
- Those who display symptoms will not be permitted entry.

Canteen Facilities

- No canteen facilities are available.
- All players, coaches, officials and spectators are required to bring their own water bottles to the venue. Two full water bottles per player is recommended. Water fountains will be closed.

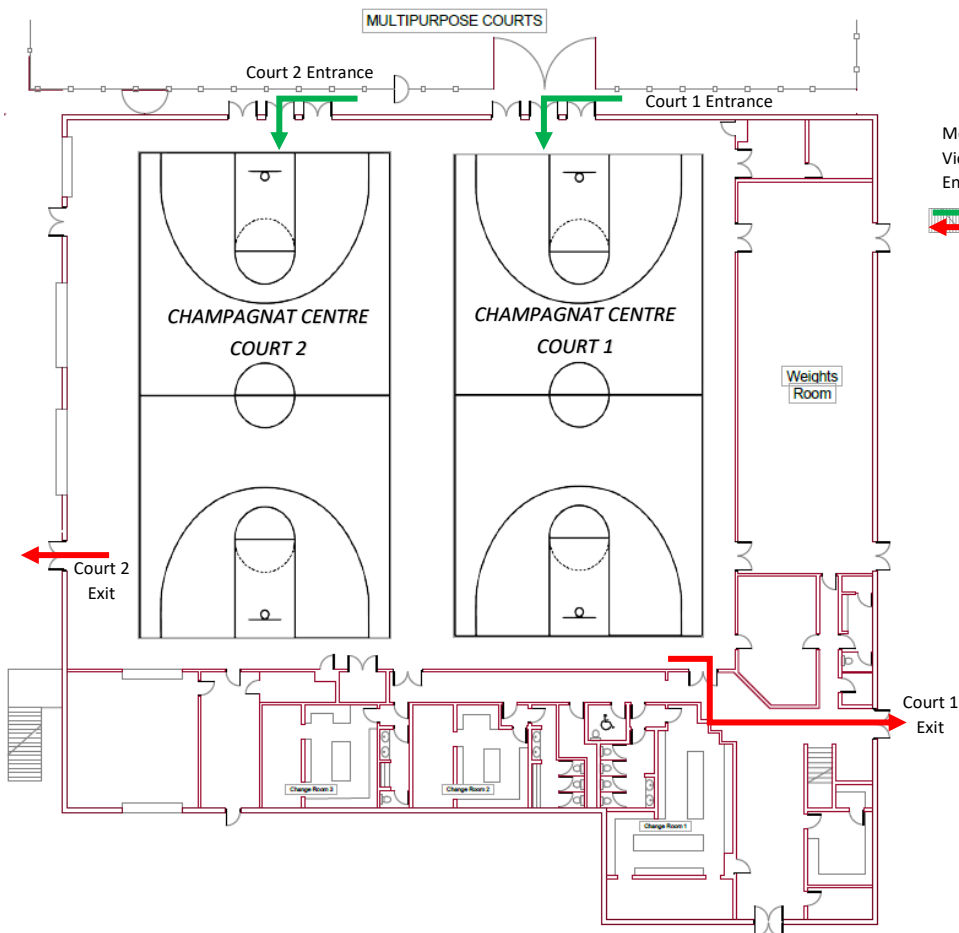
Venues

- Venues will be cleaned before and after each match.
- There will be an appointed COVID Officer at the venue.

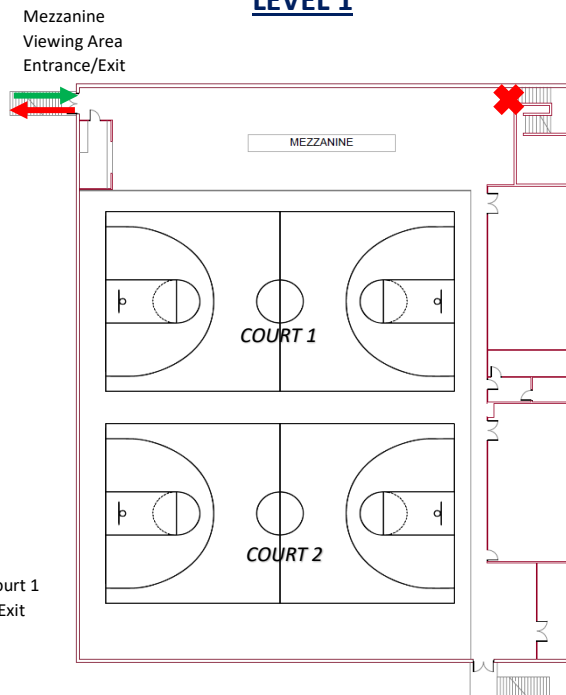
Download the COVID Safe App

- We encourage all members of the community to download the COVID Safe App to assist with contact tracing in the event of a contracted case whilst at any AIC sporting event.

GROUND LEVEL



LEVEL 1



→ Entrance Path

→ Exit Path





MULTIPURPOSE COURTS

COVIDSAFE SITE PLAN

Drop Off and Pick Up Points

- Players, coaches and officials are only permitted to enter the venue. Selected students (for the 1st game) and one parent per player are allowed for the open games ONLY.
- Parents and school buses are to drop off and pick up at the designated areas, during the specified times.
- Players are not to arrive more than 15min prior to the start time. At the conclusion of the match all players must vacate the venue immediately via the exit path to the pickup zone.

Entry and Exit Paths

- Please observe and obey all entry and exit paths as per map.

Site Registration

- All players and adults including coaches, officials, staff, parent spectators (opens only) and first aid officers etc must register their attendance at the registration desk.

Hygiene

- Utilise the hand sanitiser before, during and after the game. These are located at the many sanitiser stations at the venue.
- Shower at home both pre and post-game.
- Come to the venue dressed in playing uniform. There will be no access to changerooms. Toilet facilities will be available.

Hygiene cont.

- Players are not to bring any unnecessary equipment e.g. basketballs.
- Follow the displayed signage at the venue and social distance at 1.5m always.
- If you are displaying signs and symptoms of feeling unwell **STAY AT HOME** and seek appropriate medical advice.
- Those who display symptoms will not be permitted entry.

Canteen Facilities

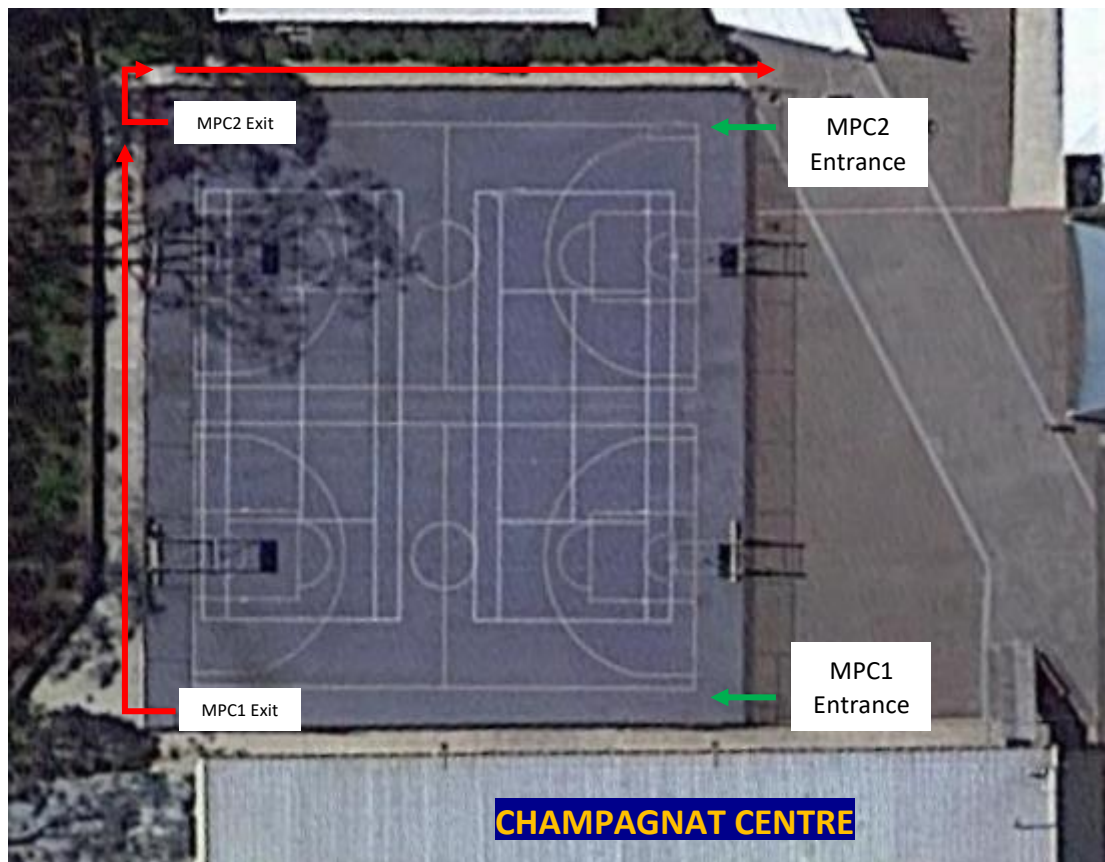
- No canteen facilities are available.
- All players, coaches, officials and spectators are required to bring their own water bottles to the venue. Two full water bottles per player is recommended. Water fountains will be closed.

Venues

- Venues will be cleaned before and after each match.
- There will be an appointed COVID Officer at the venue.

Download the COVID Safe App

- We encourage all members of the community to download the COVID Safe App to assist with contact tracing in the event of a contracted case whilst at any AIC sporting event.



Venue Entrance Point



Venue Exit Point



TENNIS COURTS

COVIDSAFE SITE PLAN

Drop Off and Pick Up Points

- Players, coaches and officials are only permitted to enter the venue. Selected students (for the 1st game) and one parent per player are allowed for the open games ONLY.
- Parents and school buses are to drop off and pick up at the designated areas, during the specified times.
- Players are not to arrive more than 15min prior to the start time. At the conclusion of the match all players must vacate the venue immediately via the exit path to the pickup zone.

Entry and Exit Paths

- Please observe and obey all entry and exit paths as per map.

Site Registration

- All players and adults including coaches, officials, staff, parent spectators (opens only) and first aid officers etc must register their attendance at the registration desk.

Hygiene

- Utilise the hand sanitiser before, during and after the game. These are located at the many sanitiser stations at the venue.
- Shower at home both pre and post-game.
- Come to the venue dressed in playing uniform. There will be no access to changerooms. Toilet facilities will be available.

Hygiene cont.

- Players are not to bring any unnecessary equipment e.g. basketballs.
- Follow the displayed signage at the venue and social distance at 1.5m always.
- If you are displaying signs and symptoms of feeling unwell **STAY AT HOME** and seek appropriate medical advice.
- Those who display symptoms will not be permitted entry.

Canteen Facilities

- No canteen facilities are available.
- All players, coaches, officials and spectators are required to bring their own water bottles to the venue. Two full water bottles per player is recommended. Water fountains will be closed.

Venues

- Venues will be cleaned before and after each match.
- There will be an appointed COVID Officer at the venue.

Download the COVID Safe App

- We encourage all members of the community to download the COVID Safe App to assist with contact tracing in the event of a contracted case whilst at any AIC sporting event.



Opens Family Viewing Areas