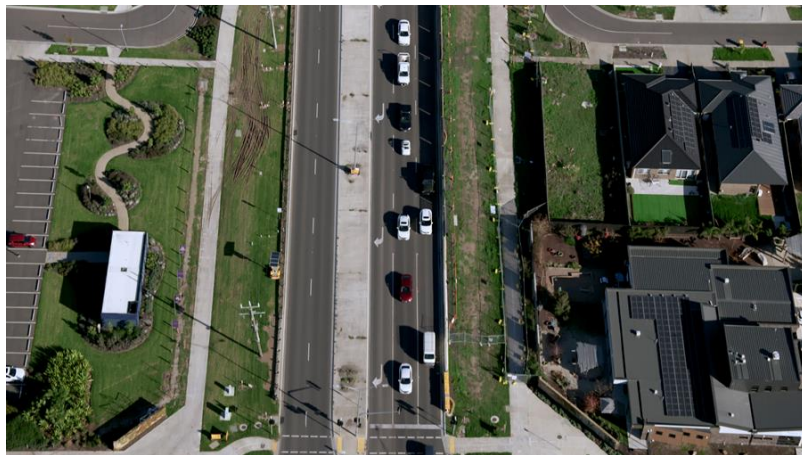




Mickleham Road Upgrade - Stage 1

May 2023 Construction Update



We're building extra lanes, upgrading key intersections and installing new traffic lights on Mickleham Road to reduce congestion and improve safety and travel times.

What's been happening

In April, we finished realigning the roundabout at Mickleham and Somerton roads and continued relocating communications services under Mickleham Road.

We also:

- continued pipeline protection and telecommunication relocation works

- started water main protection works on the south side of the roundabout at Mickleham and Somerton roads
- removed the temporary site compound on Mickleham Road, opposite Aitken College.

What we're doing and when

Throughout May, we'll:

- continue water main relocation and protection works at Mickleham and Somerton roads
- continue protection of the pipeline, service proving, and relocation of telecommunications services
- undertake drainage works on Mickleham Road between Candy Road and Lemonwood Drive
- commence earthworks northbound on Mickleham Road from Lemonwood Drive to Greenvale Gardens Boulevard, and infill works at the dam
- continue telecommunications civil works on Mickleham Road.

Most of these works will take place between **7am and 6pm, Monday to Friday and 7am to 1pm, Saturdays.** At times we'll need to work outside of these hours to minimise impacts on traffic during the day.

The progress of these works will depend on weather and ground conditions. If we need to work at night, we'll let you know ahead of time.

What to expect

Changed traffic changes

There are changed traffic conditions including reduced speed limits, lane closures and temporary traffic barriers, traffic lights and line marking on Mickleham and Somerton roads while works take place.

There are also temporary footpath closures in place while we relocate services and build your new lanes on Mickleham Road.

Upcoming works

We're continuing pipe protection works southwest of the roundabout at Mickleham and Somerton roads.

To complete these works safely, we need to close a small section of the footpath. We'll have a temporary path in place to divert you around our work area.

Please follow our signage on site.

Construction impacts

Our construction activities may generate low to medium levels of noise, dust, and vibration at times. We'll be monitoring impacts to ensure they're kept to a minimum.

Temporary changes at the intersection of Mickleham and Somerton roads

We've temporarily realigned and reduced the diameter of the roundabout at the intersection of Mickleham and Somerton roads so we have enough space to safely undertake essential pipe protection works on the south side of Somerton Road.

The smaller roundabout allows us to maintain 2 lanes of traffic through the intersection, and keep traffic moving while we work.

There will be ongoing changes to this intersection until the project is complete, but we'll continue to monitor the area as our works progress.

When the project is complete, new traffic lights at Mickleham and Somerton roads intersection will improve safety and traffic flow, getting you home safer and sooner.

Craigieburn Road Upgrade

For updates about the nearby Craigieburn Road Upgrade, please visit the [Craigieburn Road Upgrade](#) webpage or [subscribe for updates](#) on the project.

More information

Find out more about the [Mickleham Road Upgrade - Stage 1](#) project on our website.

Sign up for [SMS updates](#) or use the button below.

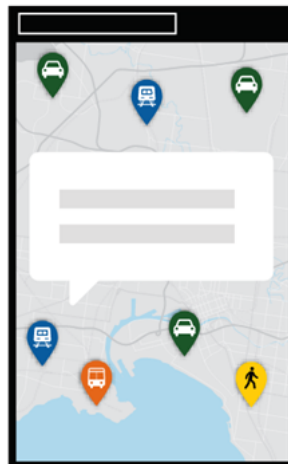
Regards,

The project team

Mickleham Road Upgrade - Stage 1

**Stay up to date with
the latest disruptions**

Sign up for SMS updates



roadprojects.vic.gov.au

1800 105 105



[Privacy Statement](#)

[Preferences](#) | [Unsubscribe](#)