

The Parents' Quick Guide to Navigating Maestro

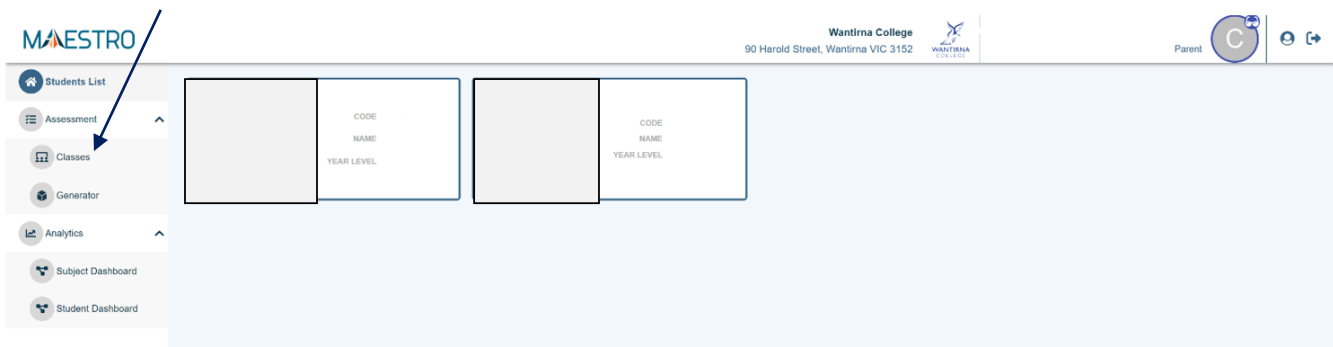


1. Log Into Maestro

- ✓ All Teachers, Students, and Parents have **access to Maestro** and have been sent an Email Invitation to log in for the first time and verify your credentials.
- ✓ Logging into an existing account:
 - **Link** - <https://wantirnasc-v.maestro.analyticsforschools.com.au/login> or use the **Link in Compass**.
 - **User** – Compass School Email Address.
 - **Password** - Set up by the parent.
- ✓ For all account information and technical issues, contact maestro@wantirnacollege.vic.edu.au

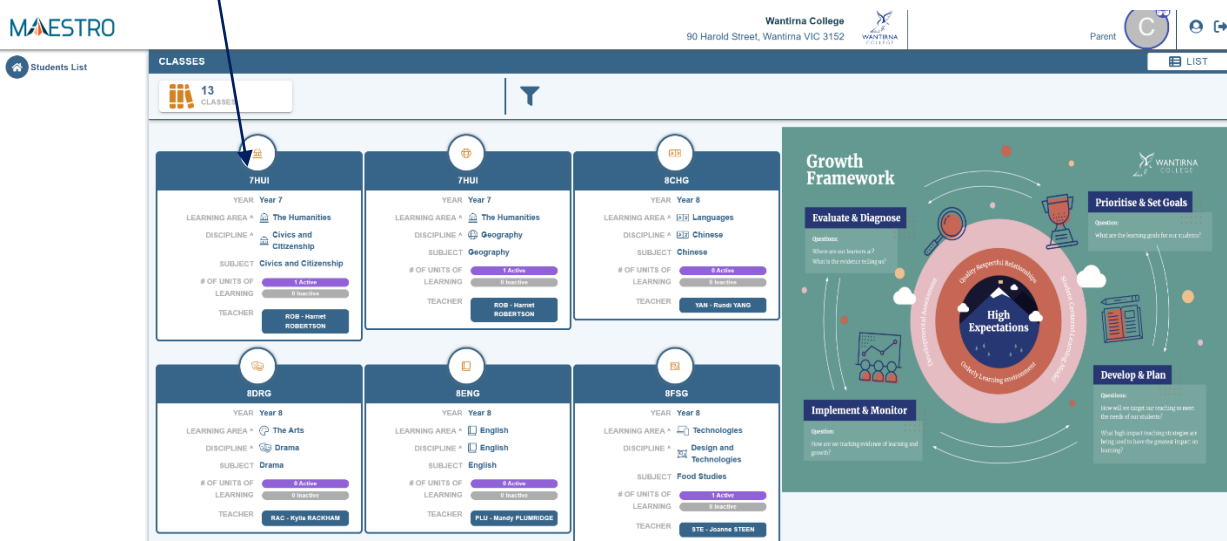
2. Parent Home Page - Shows all students/children at the College.

- ✓ **Select 'Classes'** to show all classes for the student.



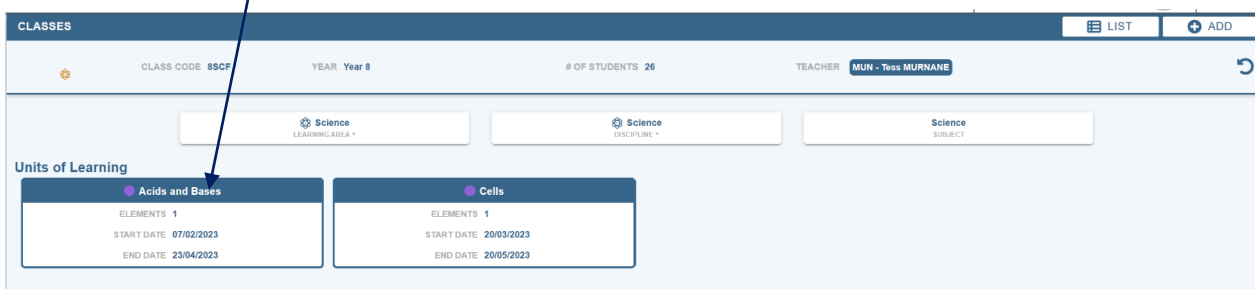
3. Classes - Shows all classes/teachers and the numbers of active (purple) and inactive (grey) for each subject.

- ✓ **Select a 'Subject'** to view an active developmental rubric.



4. Class Page - Shows all classes and active (purple) and inactive (grey) for each subject.

- ✓ **Select a 'Developmental Rubric'** for all the learning steps in that Unit of Learning steps.



Interpreting a Developmental Rubric

Rubrics show the skills & knowledge assessed in a Unit of Learning.

- ✓ in **'teacher view'** parents can see the student's current achievement for each skill/knowledge as assessment by the teacher and student.
- ✓ in **'student view'** parents can see how students have self-assessment their skills and knowledge

A developmental rubric for a unit of learning with one key skill - Understanding Dimensions of Health

The Information Header

Shows basic details about the **learning area**, the **subject**, the **class**, and the name of the **unit of learning**.

Teacher View and Student View

Parents can select the presentation of the rubrics, in either **student view** or **teacher view**.

The screenshot shows a web-based interface for a developmental rubric. At the top, there's a navigation bar with filters for Year 8, Health and Physical Education (Learning Area and Discipline), and Foundations of Health (Unit of Learning). Below this is a 'Student View' section with a 'Log' button and a list of levels from 'I need support' to 'Level 10A'. The main area displays a table of 'Key skills / Knowledge' with rows for different skills, each with a description and a color-coded status (Orange, Gray, or Blue). A 'Rubric Marking Key' on the right explains the colors: Orange for 'Insufficient Evidence', Gray for 'Consolidating', and Blue for 'Mastering'. Annotations with arrows point to various parts of the interface, explaining the 'I-Can' level statements, the log, and the marking key.

The 'I-Can' Level Statements

The statements describe learning as a sequence of developmental steps & are based on the Victorian Curriculum. **Statements are read from the bottom to the top.**

The statements describe a skill/knowledge in progressively more complex & challenging stages from 'I need support' at the bottom through to 'Level 10A' at the top.

The Log

Keeps a **chronological record of the marking** made by the student & teacher.

Rubric Marking Key

Teachers and students assess knowledge/skills as:

1. **Orange - Insufficient Evidence** - not yet taught or demonstrated.
2. **Gray - Consolidating** - demonstrated through classroom activities.
3. **Blue - Mastering** - demonstrated through assessments & other evidence of learning & demonstrated or submitted for assessment.

Interpreting The Student Dashboards

This interactive dashboard provides a summary of a range of different data and information from *Compass & Testing*

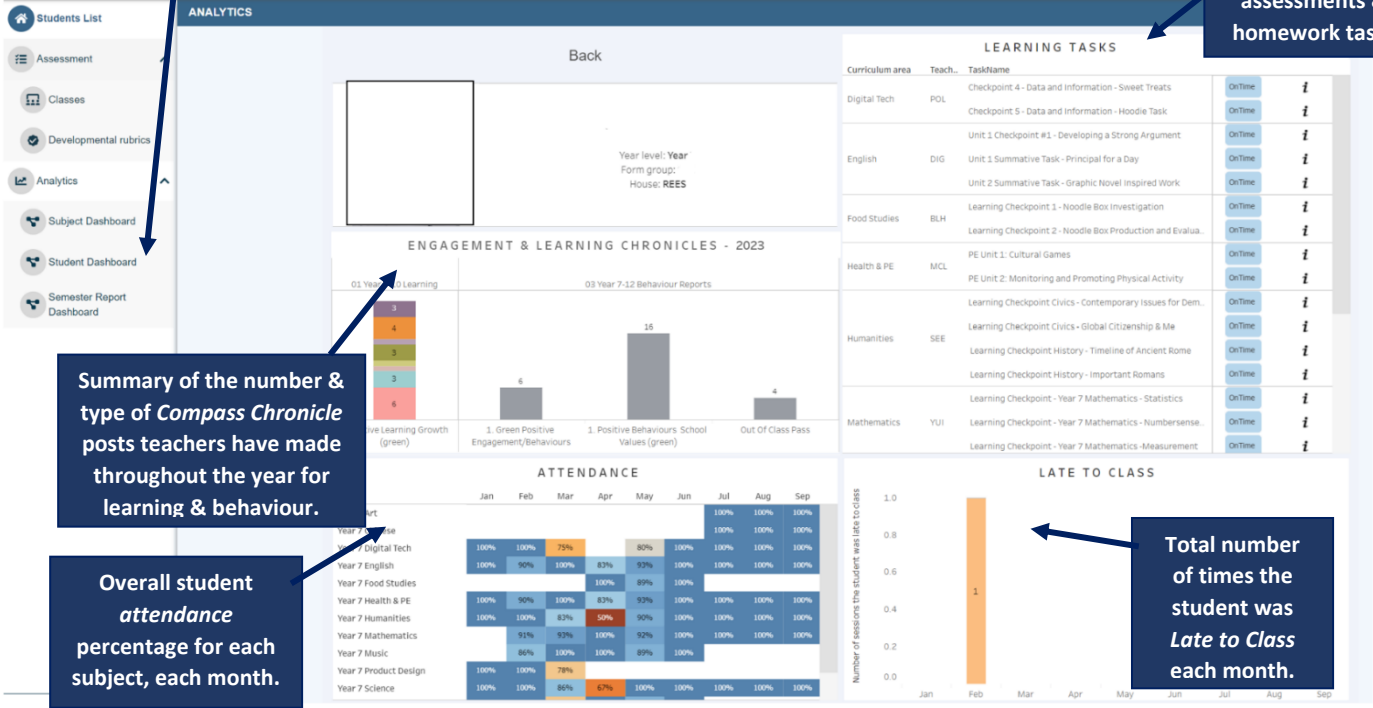
Maestro Student Dashboard – Year 7-10

MAESTRO

Wantirna College
90 Harold Street, Wantirna VIC 3152



Compass Learning Tasks – assessments & homework tasks

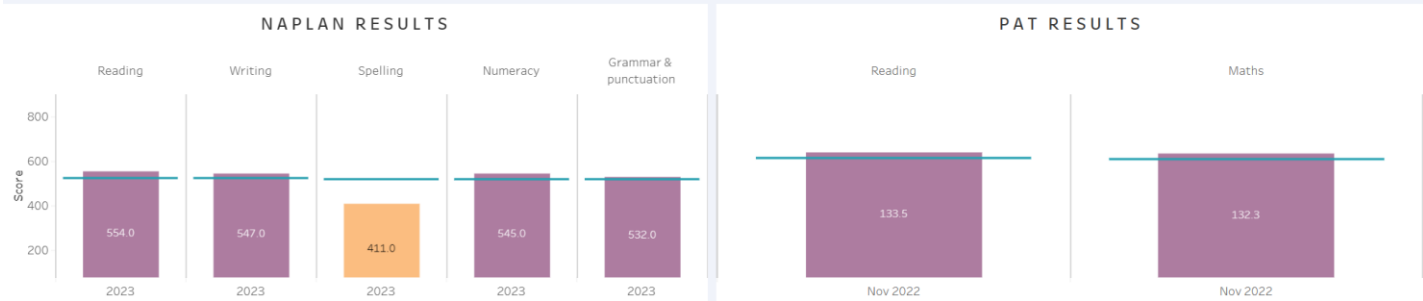


Summary of the number & type of *Compass Chronicle* posts teachers have made throughout the year for learning & behaviour.

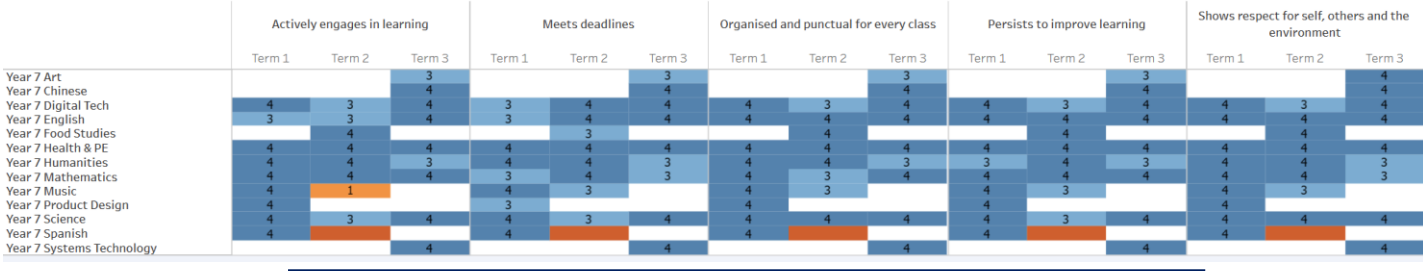
Overall student attendance percentage for each subject, each month.

Total number of times the student was *Late to Class* each month.

NAPLAN and PAT achievement data relative to the state average achievement in each



LEARNING BEHAVIOURS - 2023



The comparative *Learning Behaviour* averages as recorded by teachers for each subject.

Maestro Student Dashboard – VCE



Wantirna College
90 Harold Street, Wantirna VIC 3152



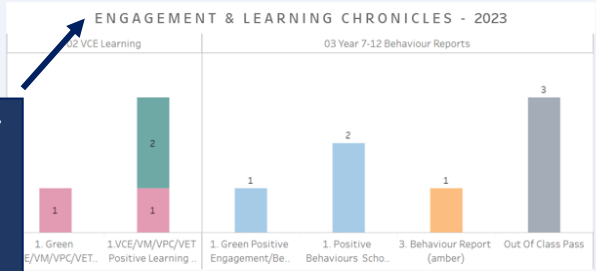
Compass Learning Tasks – assessments & homework tasks

- Students List
- Assessment
- Classes
- Developmental rubrics
- Analytics
- Subject Dashboard
- Student Dashboard
- Semester Report Dashboard

Back

Year level: Year
Form group:
House: MASON

| Curriculum area | Teacher | TaskName | Status | Info |
|-----------------------------------|---------|--|---------------|------|
| Environmental Science Unit 1 | BAI | Summer Holiday Homework - Step Up | OnTime | i |
| | | SAC 1 How are Earth's Systems Organised and Connect... | OnTime | i |
| | | Term 1 Holiday Homework | OnTime | i |
| | | Checkpoint - AoS2 Chapter 3 | OnTime | i |
| | | SAC 2 How do Earth's systems change over time? | OnTime | i |
| Environmental Science Unit 2 | BAI | SAC 3 How do scientific investigations develop under... | OnTime | i |
| | | Term 2 Holiday Homework | SubmittedLate | i |
| General Mathematics Unit 1 | MAL | SAC 1 - How can we manage pollution to sustain Earth... | OnTime | i |
| | | Topic 1 - Recursion, Finance & Sequences | OnTime | i |
| | | Topic 3 - Matrices | OnTime | i |
| General Mathematics Unit 2 | MAL | Topic 4 - Linear Functions, Graphs, Equations & Models | OnTime | i |
| | | Topic 1 - Investigating Relationships Between Numeric... | OnTime | i |
| Health & Human Development Unit 1 | CAV | Topic 2 - Variation | OnTime | i |
| | | SAC 2a Food trend report | OnTime | i |
| | | SAC 2B- Food Comparison Task | OnTime | i |
| | | Learning Checkpoint 1: Psychological Development | OnTime | i |

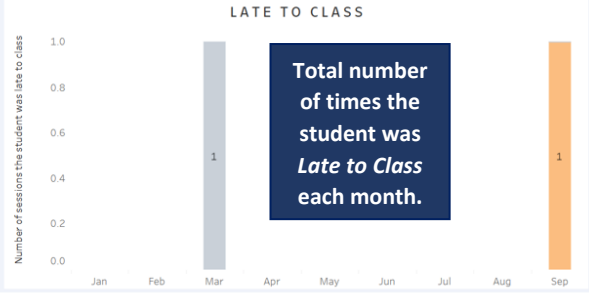


Summary of the number & type of Compass Chronicle posts teachers have made throughout the year for learning & behaviour.

ATTENDANCE

| Subject | Jan | Feb | Mar | Apr | May | Jun | Jul | Aug | Sep |
|-------------------------------|------|------|------|------|------|------|------|------|------|
| Biology Unit 1 | 100% | 100% | 100% | 100% | 100% | 100% | 100% | 100% | 100% |
| Biology Unit 2 | 100% | 100% | 100% | 100% | 100% | 100% | 100% | 100% | 100% |
| English Unit 1 | 100% | 100% | 100% | 100% | 100% | 100% | 100% | 100% | 100% |
| English Unit 2 | 100% | 100% | 100% | 100% | 100% | 100% | 100% | 92% | 100% |
| Environmental Science Unit 1 | 100% | 100% | 100% | 100% | 100% | 100% | 100% | 100% | 100% |
| Environmental Science Unit 2 | 100% | 100% | 100% | 100% | 100% | 100% | 89% | 100% | 100% |
| General Mathematics Unit 1 | 100% | 100% | 100% | 100% | 100% | 100% | 100% | 100% | 100% |
| General Mathematics Unit 2 | 100% | 100% | 100% | 100% | 100% | 100% | 89% | 100% | 100% |
| Health & Human Development... | 100% | 100% | 100% | 100% | 100% | 100% | 100% | 100% | 100% |
| Health & Human Development... | 100% | 100% | 100% | 100% | 100% | 100% | 89% | 100% | 100% |

Overall VCE attendance percentage for each subject, each month.



Total number of times the student was Late to Class each month.

VCE SEMESTER REPORT RESULTS

| Subject | Assessment Task | Grade |
|-----------------------------------|--|-------|
| General Mathematics Unit 1 | SAC 2 How Earth's systems change over time | D+ |
| | SAC 3 How do scientific investigations develop understanding of E... | D+ |
| | SAC 1 Sequences, Recursion & Finance | B |
| Health & Human Development Unit 1 | SAC 2 Investigating & Comparing Data Distributions | NA |
| | SAC 3 Matrices | B+ |
| | SAC 4 Linear Functions, Graphs, Equations & Models | A |
| Psychology Unit 1 | SAC 1 Understanding health and wellbeing | C |
| | SAC 2 Health and nutrition | C+ |
| | SAC 3 Youth health and wellbeing | NA |
| Psychology Unit 2 | SAC 1 Psychological development case study analysis | B+ |
| | SAC 2 Research investigation | A |
| | SAC 3 Brain functions media analysis | C+ |

VCE performance in Assessment Tasks during Semester 1 – Hover over the grade for more information.

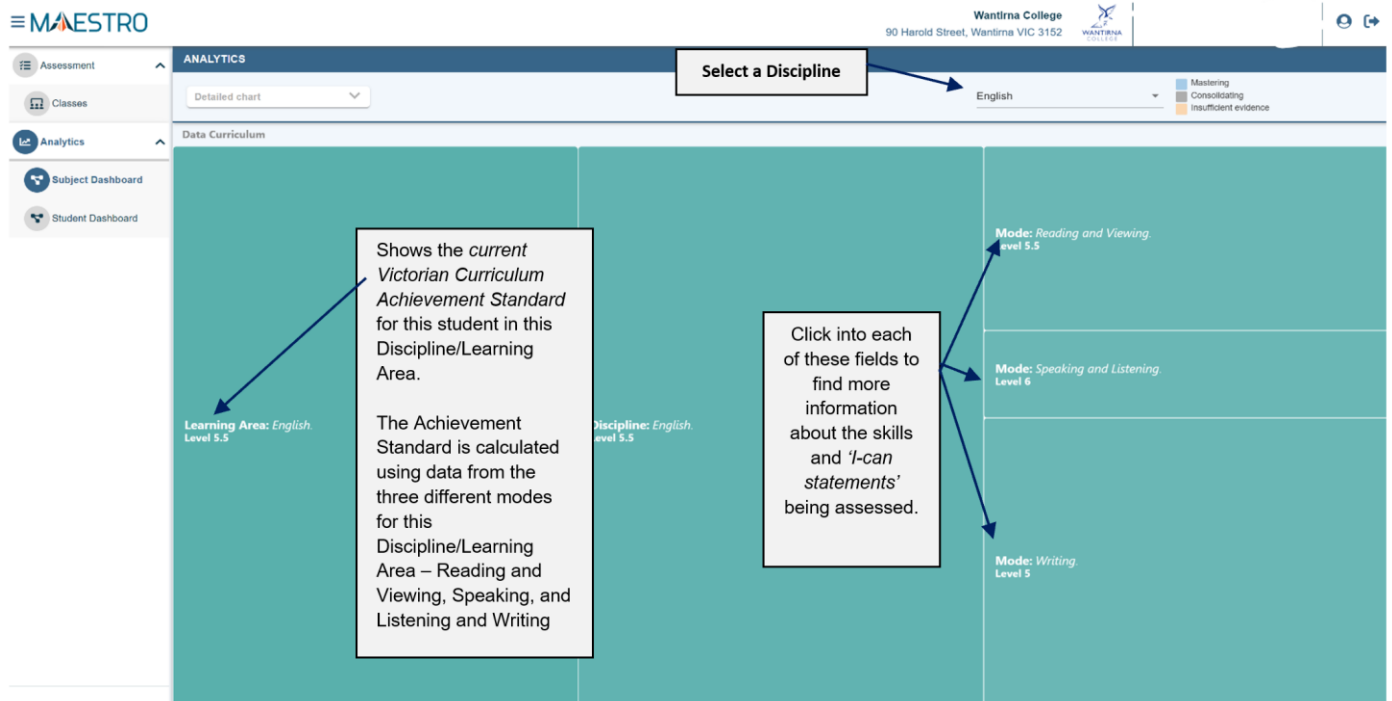
LEARNING BEHAVIOURS - 2023

| Subject | Actively engages in learning | | | Meets deadlines | | | Organised and punctual for every... | | | Persists to improve learning | | | Shows respect for self, others and th... | | |
|-----------------------|------------------------------|--------|--------|-----------------|--------|--------|-------------------------------------|--------|--------|------------------------------|--------|--------|--|--------|--------|
| | Term 1 | Term 2 | Term 3 | Term 1 | Term 2 | Term 3 | Term 1 | Term 2 | Term 3 | Term 1 | Term 2 | Term 3 | Term 1 | Term 2 | Term 3 |
| Biology Unit 1 | 3 | 4 | 3 | 4 | 4 | 4 | 4 | 3 | 4 | 4 | 4 | 4 | 4 | 4 | 4 |
| Biology Unit 2 | 4 | 3 | 3 | 3 | 3 | 4 | 4 | 3 | 3 | 3 | 3 | 4 | 4 | 4 | 4 |
| English Unit 1 | 4 | 3 | 3 | 3 | 3 | 3 | 3 | 3 | 3 | 3 | 3 | 1 | 4 | 4 | 3 |
| English Unit 2 | 4 | 4 | 4 | 4 | 4 | 4 | 4 | 4 | 4 | 4 | 4 | 4 | 4 | 4 | 4 |
| Environmental Sci... | 4 | 4 | 4 | 4 | 4 | 4 | 4 | 4 | 4 | 4 | 4 | 4 | 4 | 4 | 4 |
| Environmental Sci... | 4 | 4 | 4 | 4 | 4 | 4 | 4 | 4 | 4 | 4 | 4 | 4 | 4 | 4 | 4 |
| General Mathematic... | 3 | 3 | 3 | 3 | 3 | 4 | 4 | 3 | 3 | 3 | 3 | 3 | 4 | 4 | 4 |
| General Mathematic... | 3 | 3 | 3 | 3 | 3 | 4 | 4 | 3 | 3 | 3 | 3 | 3 | 4 | 4 | 4 |
| Health & Human Dev... | 3 | 3 | 3 | 3 | 3 | 4 | 4 | 3 | 3 | 3 | 3 | 3 | 4 | 4 | 4 |
| Health & Human Dev... | 3 | 3 | 3 | 3 | 3 | 4 | 4 | 3 | 3 | 3 | 3 | 3 | 4 | 4 | 4 |
| Psychology Unit 1 | 3 | 3 | 3 | 3 | 3 | 4 | 4 | 3 | 3 | 3 | 3 | 3 | 4 | 4 | 4 |
| Psychology Unit 2 | 3 | 3 | 3 | 3 | 3 | 4 | 4 | 3 | 3 | 3 | 3 | 3 | 4 | 4 | 4 |

The comparative Learning Behaviour averages recorded by teachers of each subject.

Interpreting the Subject Dashboards

The Subject Dashboard show the **Victorian Curriculum Achievement Standards** for each discipline based on teacher assessment in the developmental rubrics. **This example** shows an **overall VC level of 5.5** based on the student's performance in the 3 *modes*. By selecting each *strand*, the dashboard filters into the *sub-strand*, *organising elements*, *skills* and all the *granular* and *level statements* for each skill to reflect the student's current level of achievement.



5. The Semester Reports – For students in year 7 – 10 These reports show your child's:

- ✓ **Current VC Achievement Standard** in comparison to the *age-expected-level-of-achievement*.
- ✓ **Victorian Curriculum Learning Achievement Growth** compared to Semester 2 2022 (Please note: growth measures not available for students in Year 7 and new students to the College)

The Semester Report Dashboard

This is an *interactive dashboard* - hover over the different graphics for more information.

