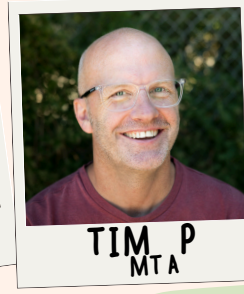
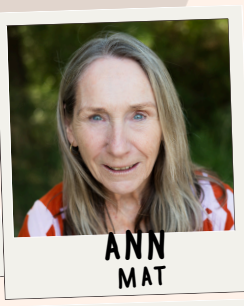


BNWPS MIDDLES COMMUNICATION TREE



Team Leader

My need is quite complex so I think I need to talk to a school leader.

Hi there!

We can help you with that. We are the Learning Community Leader of Middles at School. We are here to talk about big ideas and complex situations. You can email us:

alice.hamilton2@education.vic.gov.au

lilly.vandyk@education.vic.gov.au



Learning Community Leader

I think my child might need some extra support at school...

Hi there!

We can help you with that. We each lead an area of the curriculum and can talk about supporting your child. Our email addresses are below our photos.



Maths

alice.hamilton2@education.vic.gov.au



English

emma.mallia@education.vic.gov.au



Wellbeing

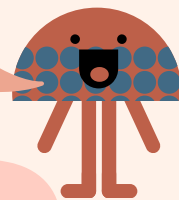
rebekah.tankard@education.vic.gov.au



Disability Inclusion

lilly.vandyk@education.vic.gov.au

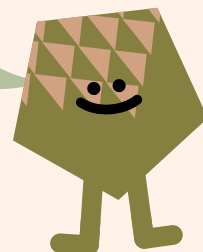
I have a question or want to share information about my child's experience in class.



Hi there!

We can help you with that. As your child's classroom teachers, we are the best people to speak with if you want to talk about your child's learning or anything that's happening in the classroom or the playground. You can contact us through Sentral or email.

I have a question about what's happening in the Middles Team.



Hi there!

I can help you with that. As the Middles Team Leader, I am the best person to speak with if you want to talk about the way we learn and play in Middle School. You can email me:

celia.dickinson@education.vic.gov.au



School staff will attempt to respond to any communications in a timely manner.

Staff are not required to respond to messages outside school hours (8:45am - 3:45pm)