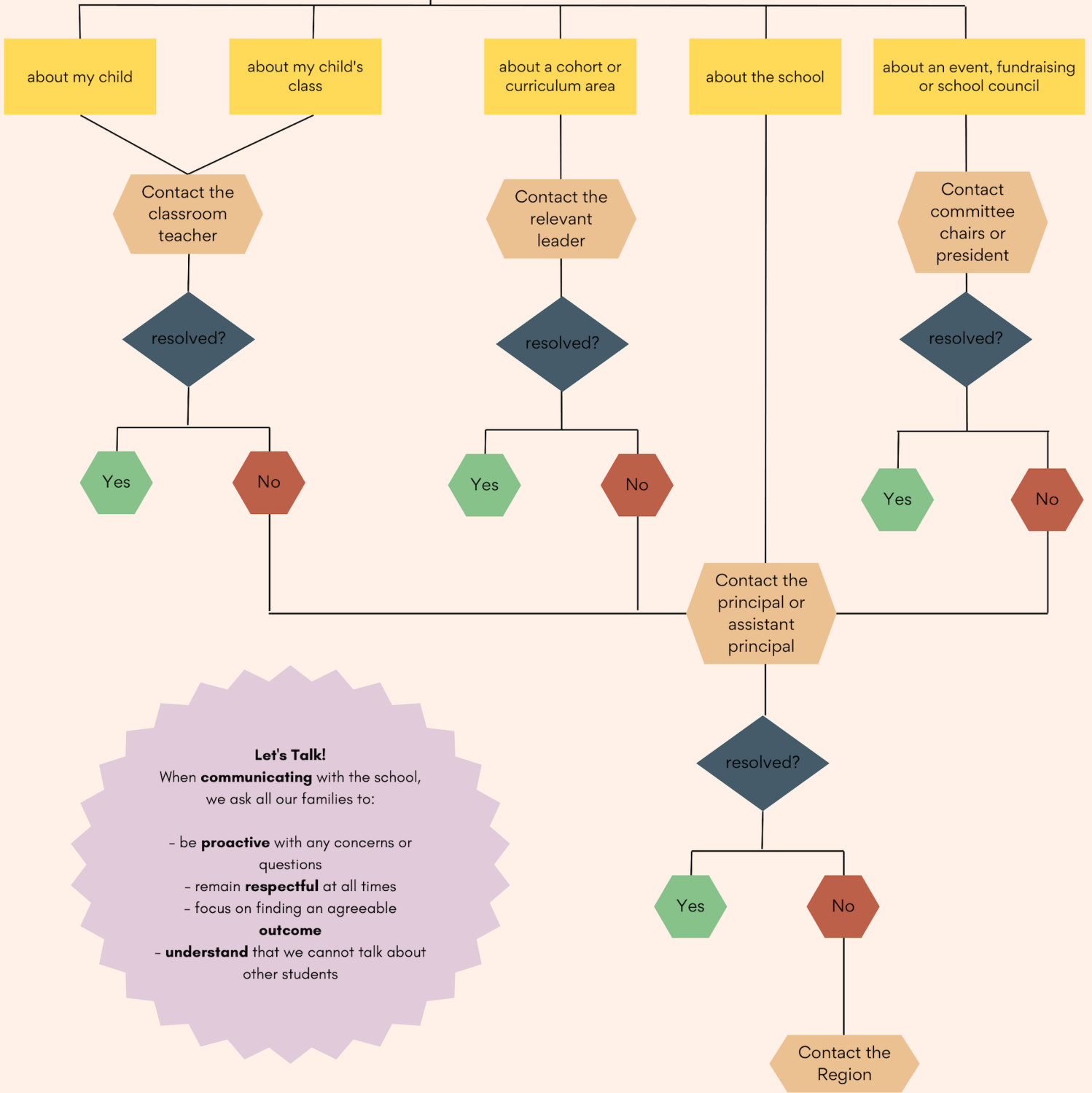


Who do I talk to about..?

BNWPS COMMUNICATION TREE



I have an idea, question or concern...



Let's Talk!
 When **communicating** with the school, we ask all our families to:

- be **proactive** with any concerns or questions
- remain **respectful** at all times
- focus on finding an agreeable **outcome**
- **understand** that we cannot talk about other students



School staff will attempt to respond to any communications in a timely manner.
 Staff are not required to respond to messages outside school hours (8:45am - 3:45pm)