

# Messages Quick Start Guide for Teachers

Messages enables ongoing, flexible communication that builds a positive environment to support student learning designed with student safety and privacy first.

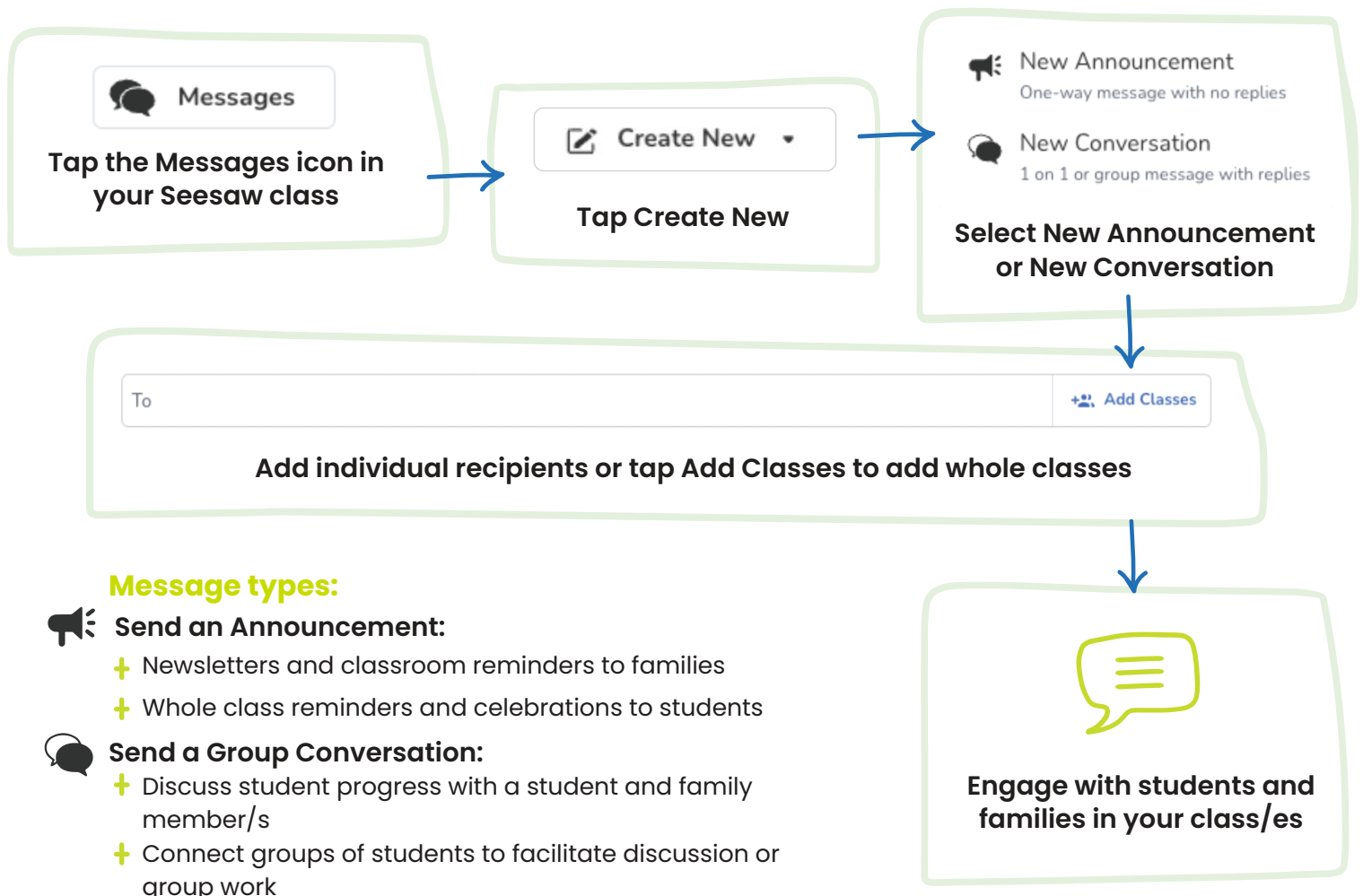


## 1 Understand your School Settings

Administrators personalize the Messages experience for your school by determining who administrators, teachers, students, and family members can create messages with. Ask your administrator what settings they have chosen for your school!

\*For Seesaw Basic classes, Messages supports teacher-initiated announcements and conversations with families, as well as full-class announcements to students.

## 2 Start Using Messages

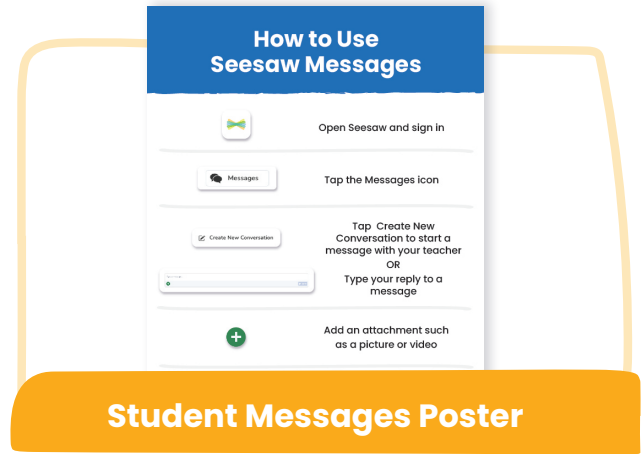


# Messages Quick Start Guide for Teachers

## 3 Get Students Started Using Messages



Messages Student Training Video

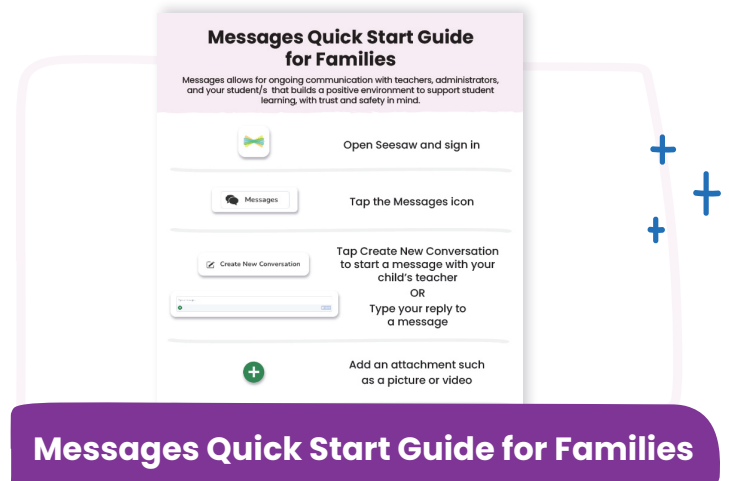


Student Messages Poster

## 4 Support Families in Using Messages



Messages Family Video



Messages Quick Start Guide for Families

[web.seesaw.me/messages](https://web.seesaw.me/messages)