

# NAPLAN 2023

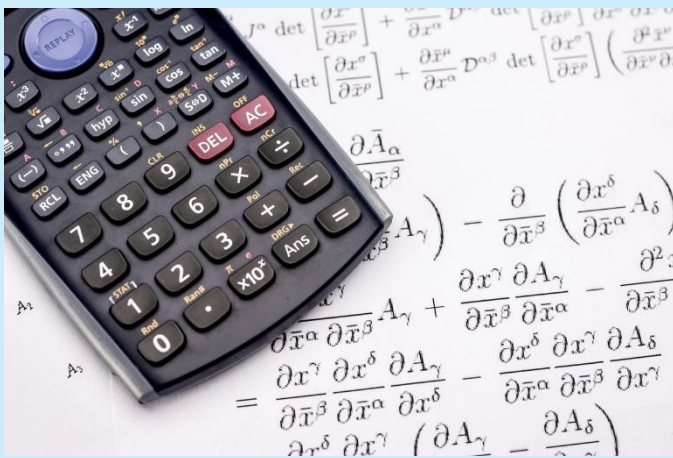
Information for students in Years 7 and 9

## How can I get ready for NAPLAN?

Use the demonstration tests to practise the types of questions and tools available in the online tests.

Access the demonstration tests here:

<https://www.nap.edu.au/online-assessment/public-demonstration-site>

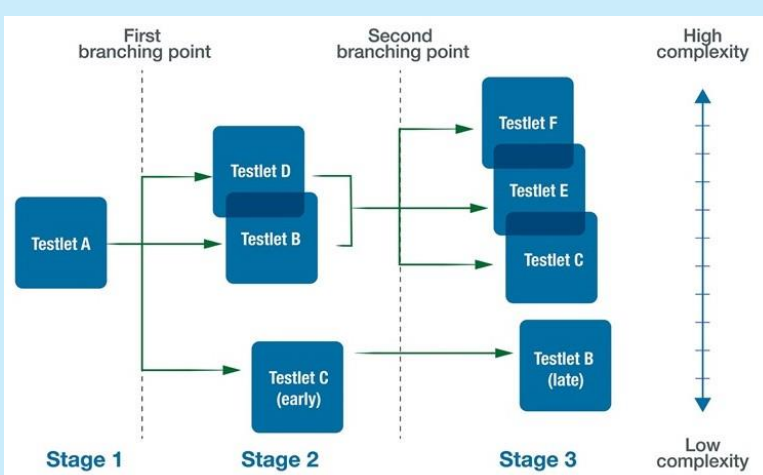
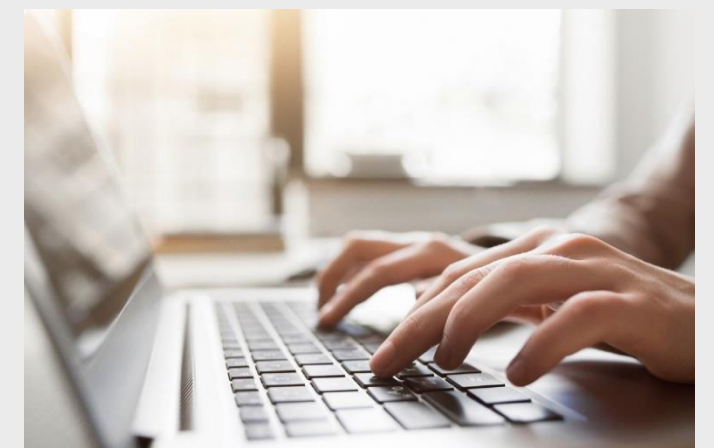


## Can I use my own calculator for the numeracy test?

No. The online numeracy test will have an on-screen calculator. Try the NAPLAN online calculator in the numeracy demonstration tests on the public demonstration site.

## Do I need to touch type?

No. You do not need to be able to touch type to complete the tests.



## What is tailored testing?

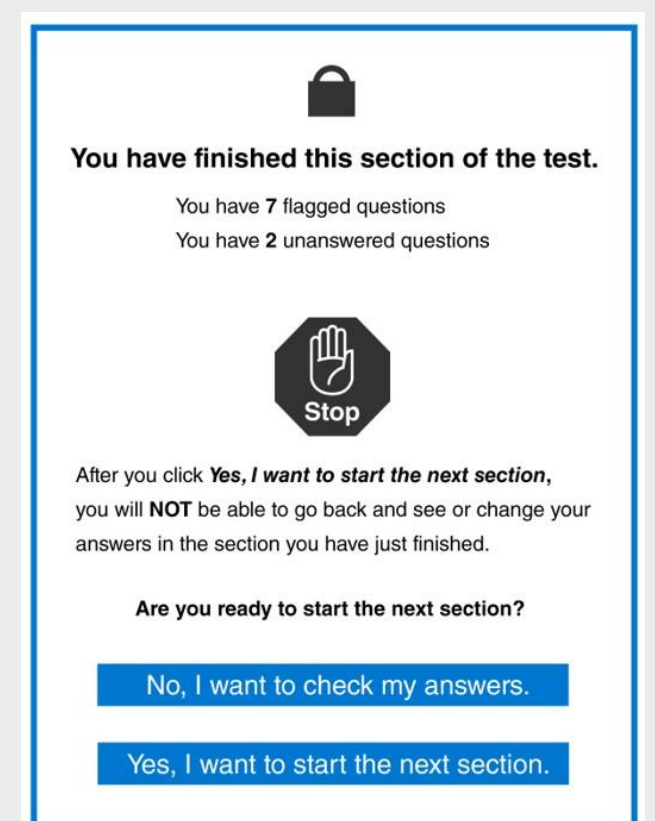
The test will change depending on your performance in the test. Questions get easier or harder based on your answers.

## Conventions of language test important information

A message will appear on your device to let you know you have finished the spelling section of the test.

Check your answers before selecting '*Yes, I want to start the next section*'.

After you select '*Yes, I want to start the next section*', the grammar and punctuation section will start. You will **not** be able to go back to the spelling section of the test.



**Questions?** Speak with your teacher or visit [www.nap.edu.au/online-assessment](https://www.nap.edu.au/online-assessment)