



Excursion



Super Excursion



Special Activities



In-house Fun



Public Holiday



**Ready Set BLOOM**

Let's welcome Spring by opening the doors to nature, with sensory flowers, buzzing bees and beautiful butterflies. Plus, plenty of time to work on your child's individual goals.



Caterpillar Grapes

MONDAY

**18**  
SEPTEMBER



**Cube of Sports**

Hit the mark with the inflatable cube of fun! Develop coordination skills by passing and kicking the ball at the target. Plus, plenty of time to work on the children's individual NDIS goals.



Sports Workshop

MONDAY

**25**  
SEPTEMBER



**The Buzz**

Bee ready! Today we will be constructing the bee mansion and celebrating all things Spring! Plus, plenty of time to work on your child's individual goals.



Bee Hive

TUESDAY

**19**  
SEPTEMBER



**Silly String Science**

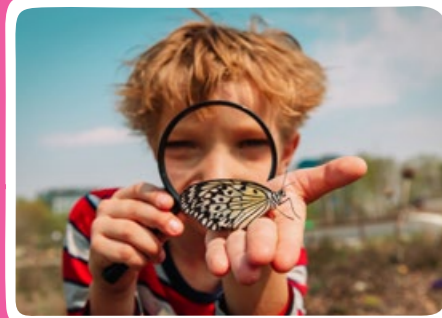
Today is all about science fun! If you consider yourself a slime scientist, you don't want to miss this! Plus plenty of time to work on your child's individual goals.



Science String

TUESDAY

**26**  
SEPTEMBER



**Butterfly Frenzy**

Immerse yourself in butterflies. Our guests will bring a gazebo of these flying beauties. Get the chance to feed, admire, interact, and learn about these fantastic creatures. This is sure to be a memory of a lifetime!



Butterfly Visit

WEDNESDAY

**20**  
SEPTEMBER



**Twisted Science**

Ignite your curiosity during our visit to TwistED Science. We will explore hands-on, engaging, high energy exhibits at this amazing venue. There will be plenty of time to choose your own adventure!

Arrive at the service by 9:00 am. Pick-up after 2:30 pm. Wear runners & socks.



TwistED Science Excursion

WEDNESDAY

**27**  
SEPTEMBER



**Funky Farm**

Today we will be preparing the children for their farm adventure. Through crafts, sensory and physical movement we have put together activities to get them ready and excited! Plus, plenty of time to work on your child's individual goals.



Animal Dancing

THURSDAY

**21**  
SEPTEMBER



**To Infinity and Beyond**

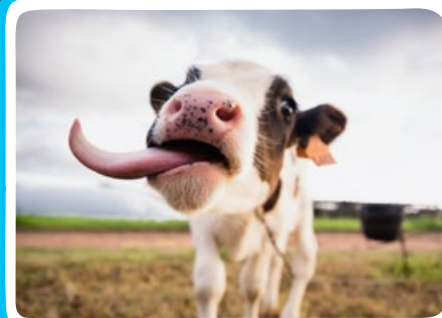
3 2 1 Blast off! Today we are zooming through the stars with sensory, craft and physical activities that will land us on the moon. Plus, plenty of time to work on your child's individual goals.



Space Sensory Felt

THURSDAY

**28**  
SEPTEMBER



**Farmyard Friends**

Today's adventure is an interactive and fun experience, to explore what life is like on the farm. See all of our favourite animals including furry, feathery and scaly friends.

Arrive at the service by 9:00 am. Pick-up after 2:30 pm. Wear runners & socks.



Farmyard Excursion

FRIDAY

**22**  
SEPTEMBER



**NO SERVICE Public Holiday!**



FRIDAY

**29**  
SEPTEMBER

# Holiday Program Important Information!

## What to bring

- A healthy morning tea, lunch and a drink bottle (water will be available all day to refill drink bottles)
- Suitable clothing for an active day – closed toe shoes and a jacket if it is predicted to be wet and cold
- SunSmart hat for Spring and Summer holidays
- Medical Management Plan & Medication if applicable – see below for details



## Don't forget!

- Keep your lunchbox nut-free to keep everyone safe
- Do not include food items that need to be reheated
- Label all items with child's name!
- Bus departure and arrival times are indicative only. For an accurate estimated time of arrival and departure please contact your service directly.



## Personal belongings

Money and other valuables should be left at home. If brought to the service, these items remain the responsibility of the family.

TheirCarePlus does not accept responsibility for loss or damage.



## TheirCare provides

- Breakfast and afternoon tea snack
- Sunscreen



## Unexpected changes to activities

In the unlikely event that an activity is unable to run, an alternative activity will be provided.

Activities and times are subject to change due to unforeseen circumstances such as severe weather or provider availability.



## Serious stuff!

### Medical Management Plan & Medication

All children who have been diagnosed with a medical condition including allergies, food/chemical intolerances, anaphylaxis, asthma, epilepsy will need to provide:

- a completed Medical Management Plan with a colour photo
- any necessary medication clearly labelled

Please note it is a legal requirement under the *NDIS Practice Standards* and the Terms and Conditions for booking that these are provided.

In the interests of child safety, care maybe refused on the day should the appropriate documentation or medication not be supplied.



If you have any questions, please feel free to speak with one of our friendly team at the service or call Customer Support 1300 344 144.



# Non-Term Time Program



## BOOKINGS OPEN NOW!

theircareplus.com.au  
1300 344 144

