




SRL Clayton

Clayton Road Closure brief
27 August to late-October 2024



Agenda

- Upcoming works update
- Impacts
- Trader support
- Notification and signage
- Additional information



Clayton works update

August

Works are underway in Clayton to deliver Suburban Rail Loop (SRL) East for Melbourne and Victoria.

What we are doing

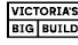

- 🕒 **Day works** 7am – 6pm Monday to Friday and 7am – 1pm Saturday
- 🌙 **Night works** 6pm – 7am Monday to Saturday
- 📌 **Extended works** 24/7 Monday to Sunday, from Tuesday 27 August

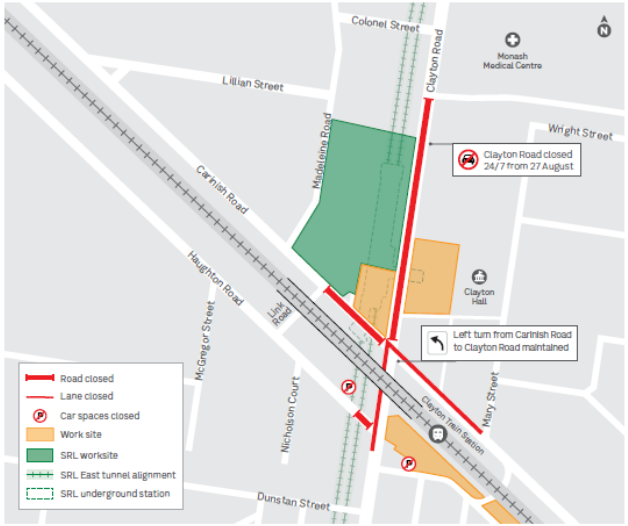
The following works will be carried out during August.

Where	When	What we are doing	What to expect
Clayton Road, Clayton	📌 27 August until late-October	<ul style="list-style-type: none"> Safe removal of hazardous materials Moving essential underground services Site establishment 	<ul style="list-style-type: none"> 24/7 road closure between Colonel Street and Haughton Road Emergency services access maintained
Haughton Road west, Clayton	🕒 27 August until late-October	<ul style="list-style-type: none"> Moving essential underground services 	<ul style="list-style-type: none"> 24/7 road closure between Nicholson Court and Clayton Road Access maintained to Nicholson Court Up to 25 car spaces closed
Haughton Road east, Clayton	🕒 Late-August until December	<ul style="list-style-type: none"> Construction of the new Clayton Community Space 	<ul style="list-style-type: none"> Closure of the park adjacent to Clayton Station Up to 3 car spaces closed
Carinish Road west, Clayton	📌 27 August until late-October	<ul style="list-style-type: none"> Moving essential underground services Site establishment 	<ul style="list-style-type: none"> 24/7 road closure between Link Road and Clayton Road
Carinish Road east, Clayton	📌 27 August until late-October	<ul style="list-style-type: none"> Moving essential underground services 	<ul style="list-style-type: none"> 24/7 eastbound lane closure between Clayton Road and Mary Street Left turn from Carinish Road to Clayton Road maintained

There will be additional lane closures and traffic management in the area throughout August to support these major works. Access will be maintained for emergency services and all hospitals. We will continue to keep the community informed through regular works notifications and signage in the area.

More information
suburbanrailloop.vic.gov.au



Impacts

As with all major infrastructure projects, surrounding communities may experience some impacts during construction. The Project supports businesses and residents to continue to live, work, study and shop in their community. Please contact us on **1800 105 105** to discuss support available if you are impacted by our works.

How we will manage our works

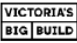

We will minimise impacts to the community by:

- Access for emergency vehicles maintained
- Maintaining access to homes and businesses
- Removing hazardous materials in accordance with Environmental Protection Authority regulations
- Transporting materials from site in covered trucks to minimise dust
- Pedestrian detours in place
- Using water and dust suppressants
- Installing road safety and detour signage
- Monitoring noise, dust and vibration levels
- Positioning equipment as far as possible from businesses and residents and turning it off when not in use
- Positioning light towers away from properties.

Thank you for your patience and cooperation as we progress the delivery of SRL East at Clayton.

To receive SRL East works reminders via SMS text CLAYTON to 0429 469 592

contact@srla.vic.gov.au | 1800 105 105 (call anytime)
suburbanrailloop.vic.gov.au

Please contact us if you would like this information in an accessible format.
If you need assistance due to a hearing or speech impairment, please visit relayservice.gov.au

For languages other than English please call 9209 0147

如需非英語信息，請撥打 9209 0147

ਬੋਠੀ ਦੇ ਭਾਸ਼ਾ ਅਤੇ ਆਵਾਜ਼ੀ ਦੇ ਹਿੱਸੇ ਵਾਲੇ 9209 0147 'ਤੇ ਕਾਲ ਕਰੋ

Für Menschen mit Hör- oder Sprechbeeinträchtigung besuchen Sie bitte relayservice.gov.au

What are we doing during the closure?

Relocation of Melbourne Water Drainage

- Clayton Road

Underground service relocation

- Remembrance Gardens / Clayton Road

Demolition of former commercial properties

- Clayton Road / Carinish Road

Relocation of Clayton Community Space

- To Haughton Road (east)

Works will involve:





- Installing traffic barriers and fencing around the worksites
- Demolition of buildings and removal of materials
- Excavation of trenches and installation of pits
- Earthworks
- Moving underground services

* All dates and staging subject to change

Impacts

What to expect: Clayton Road closure major works

From Tuesday 27 August to late-October

Location	Impacts	Day / Night	Duration	Works
Clayton Road 	<ul style="list-style-type: none"> 24/7 road closure between Colonel Street and Haughton Road 	Day and night	Until late-October	<ul style="list-style-type: none"> Moving essential underground services Safe removal of hazardous materials Site establishment
Haughton Road west 	<ul style="list-style-type: none"> 24/7 road closure at Clayton Road 	Day and night	Until late-October	<ul style="list-style-type: none"> Moving essential underground services
Carinish Road west 	<ul style="list-style-type: none"> 24/7 road closure between Link Road and Clayton Road 	Day and night	Until late-October	<ul style="list-style-type: none"> Moving essential underground services Site establishment
Carinish Road east 	<ul style="list-style-type: none"> 24/7 eastbound lane closure between Clayton Road and Mary Street 	Day and night	Until late-October	<ul style="list-style-type: none"> Moving essential underground services
Haughton Road east	<ul style="list-style-type: none"> Closure of the park adjacent to Clayton Station Up to 3 car spaces closed 	Day	Ongoing until December	<ul style="list-style-type: none"> Construction of the new Clayton Community Space



* All dates and staging subject to change

What to expect: Clayton Road closure major works

From Tuesday 27 August to late-October

- Traffic changes including lane closures, road closures and detours
- Widespread traffic detour signage in place
- Traffic management in place and traffic controllers helping drivers move through the area
- Car parking closures
- Pedestrian detours
- PTV and MTM rail replacement bus routes and bus stops impacted
- Noise, dust and vibration
- Light spillage



* All dates and staging subject to change

What to expect: Pedestrian changes

From Tuesday 27 August to late-October

Throughout these works the following footpaths will close:

Clayton Road

- From Haughton Road to Colonel Street
- Pedestrian access to Monash Surgical Private Hospital will be maintained from the north on Clayton Road

Carinish Road

- Between Link Road and Clayton Road
- A new pedestrian crossing will be installed ahead of the closure

Diversion: Via Mary Street

- Pedestrians will be directed to use Mary Street
- Rejoining Clayton Road via the car park at Mary Street / Wright Street

Diversion: Via Madeleine Road

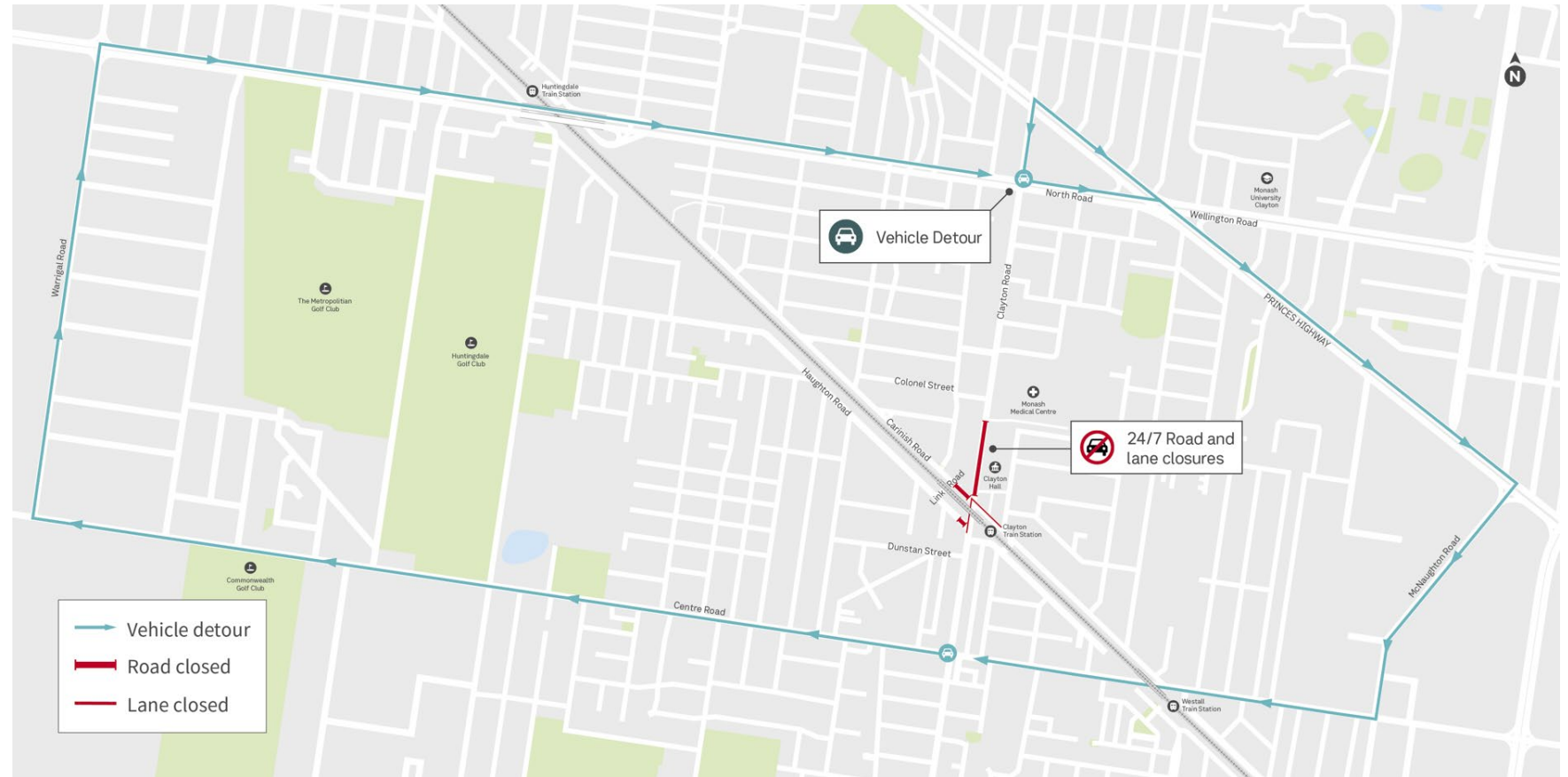
- Pedestrians will be directed to use Madeleine Road
- Rejoining Clayton Road at Colonel Street

These diversions will be managed by standard traffic management signage, corflutes and footpath decals.



Vehicle detours

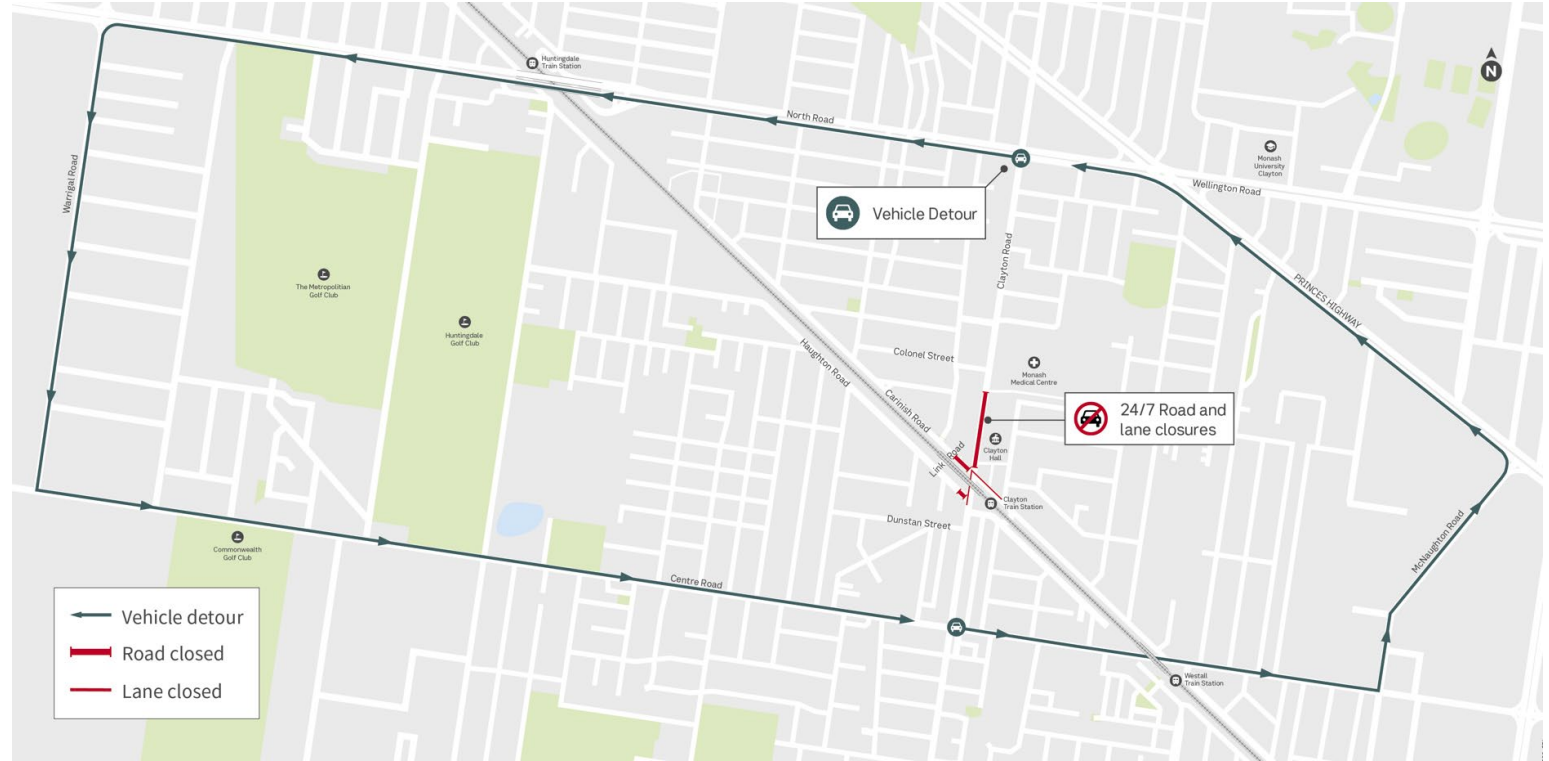
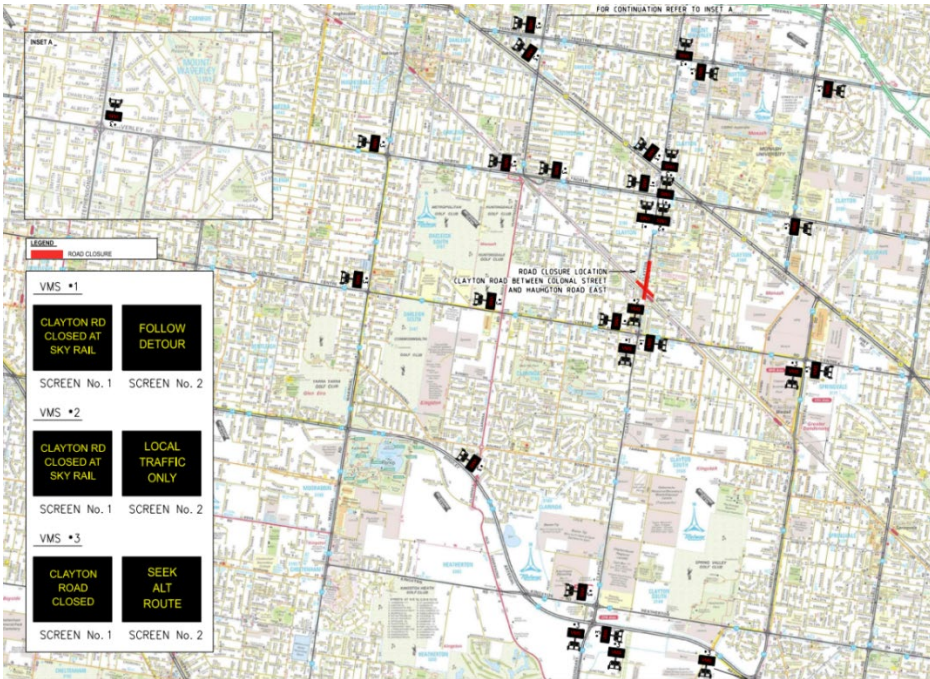
- Vehicle detour routes:
 - Via Warrigal Road
 - Via McNaughton Road
- Extensive variable message signage (VMS) to warn motorists of road closures
- VMS installed approx. two weeks before the closure



Vehicle detour – east to west

Vehicle detours

VMS plan



Vehicle detour – west to east

On-street parking removal

To support the local road network and keep bus detour routes clear during the road closure, some on-street parking will be removed along:

- Prince Charles Street
- Dunstan Street
- Madeleine Road
- Colonel Street
- Shandean Avenue
- Browns Road

On-street parking and permit zones will change to 'No Standing' zones.

On-street parking and permit zones will return when Clayton Road reopens in late-October.



SUBURBAN RAIL LOOP EAST

Car parking changes on your street

Late-August to late-October

Works are underway in Clayton to deliver Suburban Rail Loop (SRL) East for Melbourne and Victoria.

More information
suburbanrailloop.vic.gov.au

VICTORIA'S BIG BUILD **VICTORIA** State Government

Shuttle bus service

- A shuttle bus service will operate between affected bus stops by bypassing the disruptions*
- Shuttles will operate every 30 minutes from 7am to 8pm and every 60 minutes outside of these times
- Customer service representatives will be at the shuttle bus and interchange stops to assist passengers

Impacted	Not impacted
Route 631	Route 704
Route 703	Route 824
Route 733	Route 978
	Route 979



*For detailed bus route information see Additional Information section



Trader Support



Wintertime Fun activation

- Collaboration with Clayton Traders Association and Suburban Rail Loop
- Encouraging residents and Clayton visitors to explore the Clayton Activity Centre on foot and by public transport and enjoy special offers and activities
- Street entertainment including roving performers and face painting
- Live music arranged by Clayton Traders Association
- **Trader spend initiatives:**
 - SRLA branded 'show bags' with locally purchased contents
 - A 'shop and win' competition with prizes and vouchers from local traders
 - A 'spin the wheel' activity with giveaways and vouchers from local traders

When: Saturday 24 August, 12pm – 3:30pm

Where: Clayton Road, between Dunstan Street and Centre Road



Trader Support

During the Clayton Road closure, the following Trader Support Initiatives will be put in place:

- **Trader Voucher Program**

Impacted traders will be targeted for increased spend and vouchers will be distributed as part of engagement activities – door knocks, pop ups, respite.

- **Activations**

Pop ups will be held throughout the road closure, support highly impacted traders and thank the community for their patience during works.

- **Workforce Lunches and Dinners**

Weekly workforce lunches and dinners during nightworks sourced from local restaurants who are highly impacted during the works.



Approach to Trader Support

- **Workforce Spend**

Internal competition to encourage workforce to spend in the local precinct. Locally sourced prizes drawn weekly.

- **Variable Message Signage (VMS)**

VMS boards highlighting the precinct is still open for business in strategic locations along Haughton Road, Carinish Road, Centre Road and Clayton Road

- **Trader support visits**

Weekly to fortnightly visits to highly impacted traders to maintain flow of information, check on business and offer additional support if required

- **Branding**

Refreshed “Discover Clayton” signage campaign highlighting that the Clayton Activity Centre is still open for business



Notification and signage

Notification

- Clayton Road closure notification planned to be distributed w/c 19 August
- Outlining disruptions and traffic changes resulting from these works
- Highly impacted residential properties and businesses will be door knocked with the notification, and we will explain the impacts of the upcoming works
- Approx. 10,000 residential properties and traders will receive the notification in their letterbox



Clayton Road closure
27 August until late-October

Works are underway in Clayton to deliver Suburban Rail Loop (SRL) East for Melbourne and Victoria.

Change to road closure date
There is a change to the previously notified closure date for Clayton Road.
Clayton Road will now close in both directions from **27 August until late-October 2024**.

This closure is needed to relocate essential utility services and will enable the safe delivery of the new underground SRL East station at Clayton.
Extended working hours will be in place and works will be undertaken 24/7.
Please see map on the reverse side.

More information
suburbanrailloop.vic.gov.au

VICTORIA'S BIG BUILD VICTORIA State Government



Legend:

- Road closed
- Lane closed
- Ⓟ Car spaces closed
- SRL worksite
- SRL East tunnel alignment
- SRL underground station

Find out more about these works by scanning the QR code or visit suburbanrailloop.vic.gov.au/works

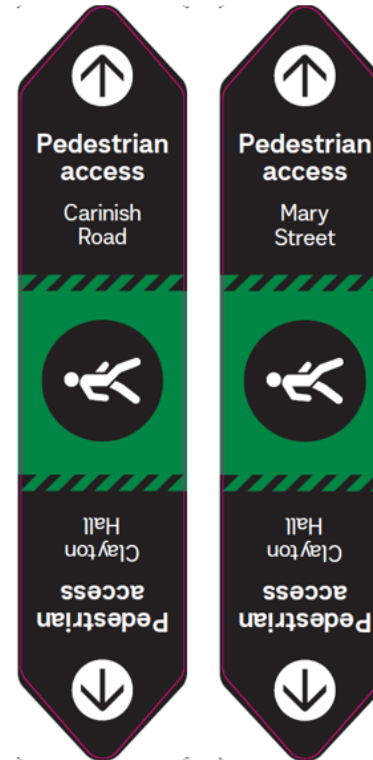
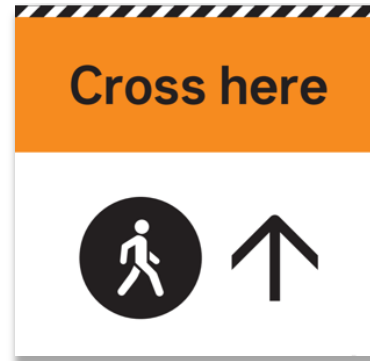
contact@srta.vic.gov.au | 1800 105 105 (call anytime)
suburbanrailloop.vic.gov.au

Please contact us if you would like this information in an accessible format.
If you need assistance due to a hearing or speech impairment, please visit relayservice.gov.au

For languages other than English please call 9209 0147

Pedestrian detour signage

- Signage with maps and footpath decals will be installed along both pedestrian detour routes to help pedestrians move around the area.
- Important landmarks will be noted on the signage to assist with orientation and decision making
 - Clayton Station
 - Monash Medical Centre
 - Monash House Private Hospital
 - Monash Surgical Private Hospital
 - St Peter's Catholic Church
- Customer service staff in place to assist pedestrians around the area



Suburban Rail Loop East

The Djerring Trail will remain open while we move utilities in the area.

Minor diversions will be in place at times throughout March and April.

Thank you for your understanding and cooperation as we deliver the new Suburban Rail Loop train station.

More information

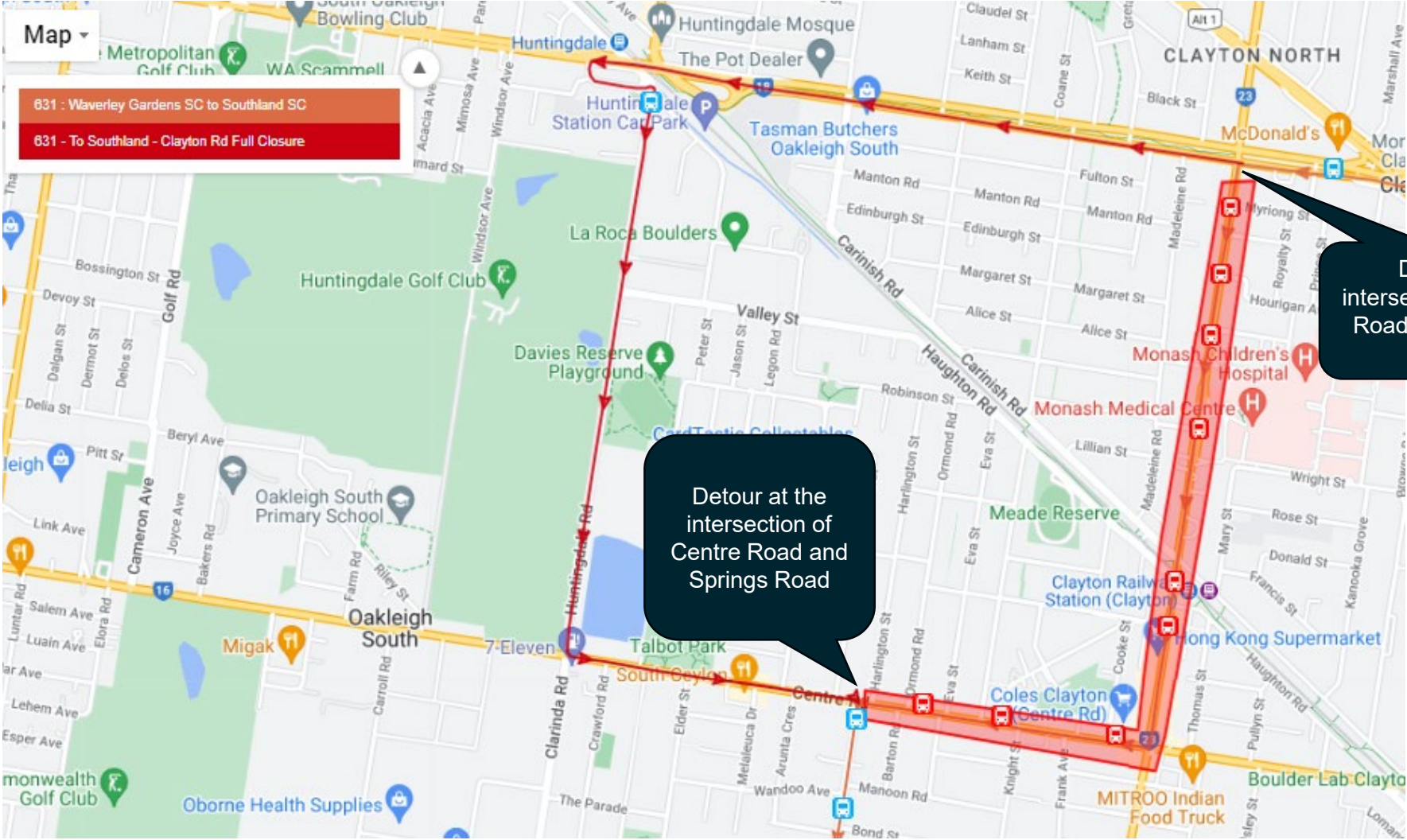
- suburbanrailloop.vic.gov.au
- contact@srla.vic.gov.au
- 1800 105 105

Interpreter Service (03) 9209 0147

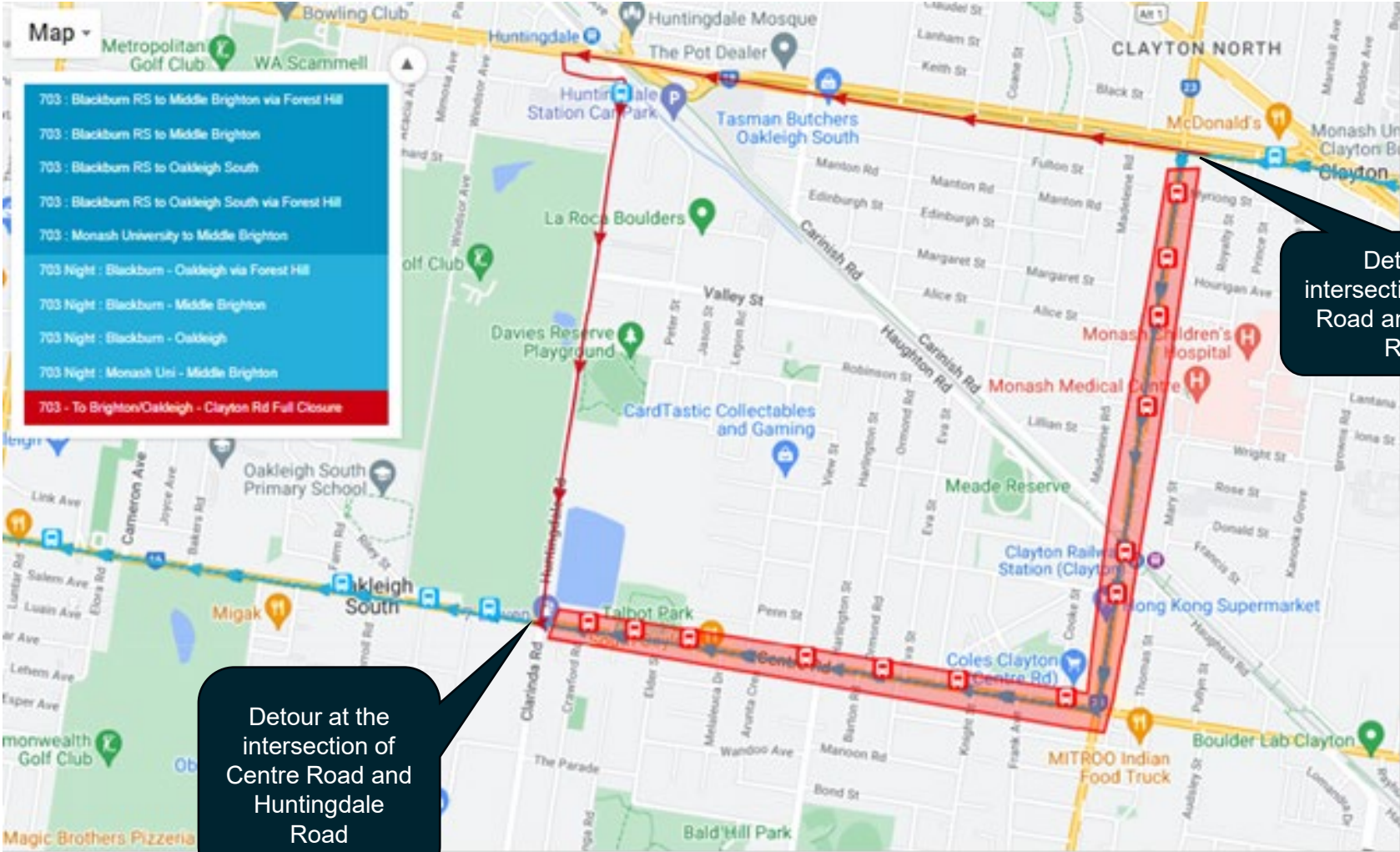
Suburban Rail Loop Authority | **VICTORIA'S BIG BUILD** | **VICTORIA State Government**

Additional Information

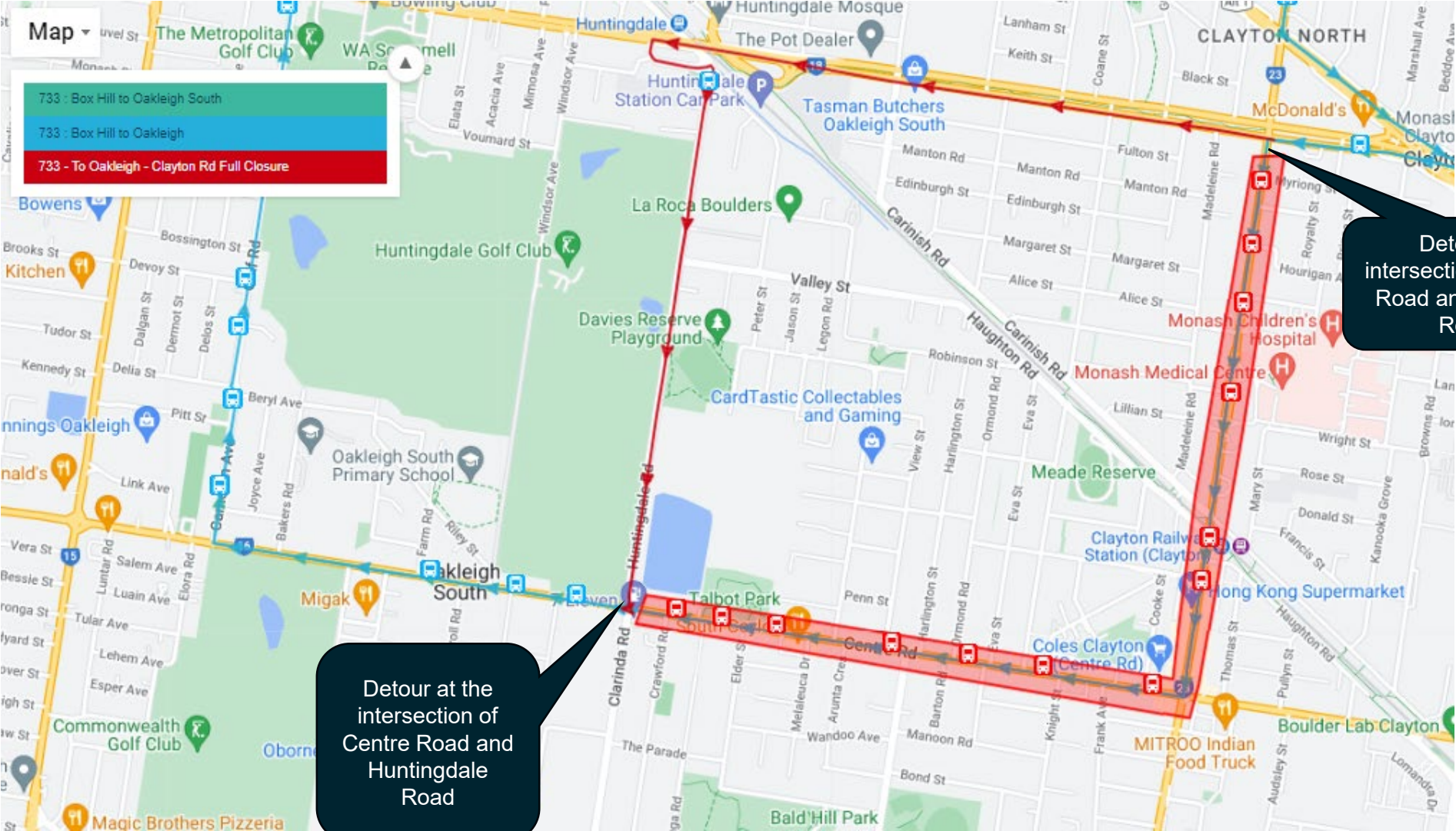
Route 631 Detour



Route 703 Detour



Route 733 Detour



What to expect PTV bus stop closures

From Tuesday 27 August to late October

The following bus stops will be impacted:

- Clayton Road / Colonel Street (southbound)
- Clayton Road / Colonel Street (northbound)
- Monash Medical Centre (southbound)

Four temporary bus stops will be operational:

- Monash Medical Centre (north of Murray Street)
- Haughton Road (near Huntingdale Station) Northbound
- Huntingdale Road (near Huntingdale Station) Southbound
- Madeleine Road (near Carinish Road) Southbound – drop off only

