

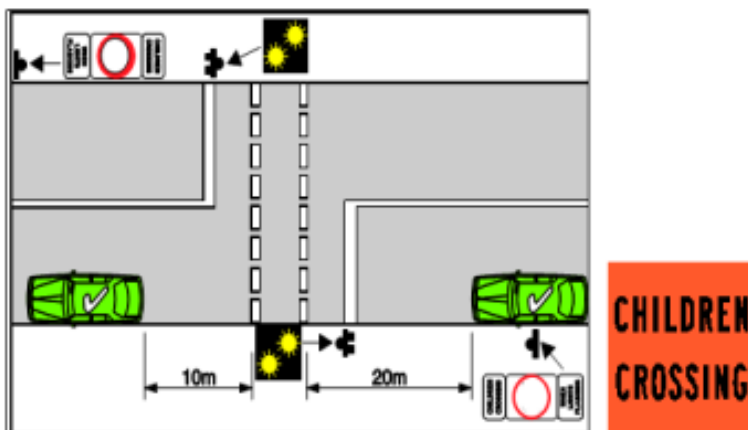
Parking officers regularly attend schools to issue penalty notices to those breaching the Road Safety Road Rules 2009. Safety of students and the School Crossing Supervisors is always the priority. There will be zero tolerance for offences detected in School Crossings.

Cost are set by the State Government and out of the jurisdiction of Moreland City Council. They may have increased since this document was produced.

This is not a complete list of signs that may be in and around schools so read the signs carefully and if you have doubt find a parking place that you have no doubt about.

The safety of your children and the school crossing supervisor is always the priority.

Please do not park where an Infringement notice will be issued and again please ensure your children use the school crossing. The crossing supervisors are there to help your child cross safely.



Usually there are two of these signs and they are attached to a red and white striped pole. This indicates the intersection.

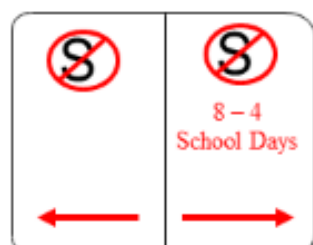
It is an offence to park 20 metres before these crossings and 10 metres after these intersections. This is to ensure high visibility of pedestrians and school crossing supervisors.

Offence: \$148



This rule means that there is no parking or stopping in areas where these signs apply.

Offence: \$148



This sign reads no stopping on one side and no stopping between the hours of 8 to 4 School Days. If you see this sign it means no stopping in these areas between school drop off and pick up times on school days, so Monday to Friday.

Offence: \$148



Similar to No Stopping signs but you can park in this area for no more than 3 mins. Effectively it is a pick up or drop off zone.

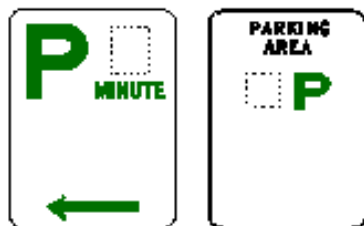
An offence is committed if you overstay that time or the driver leaves the vehicle.

Offence: \$74



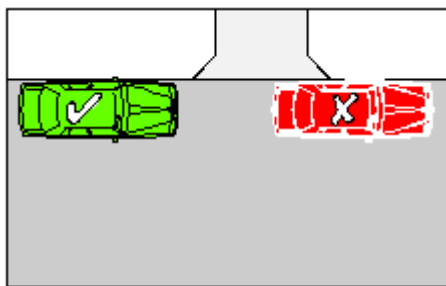
This means unless you have a disabled parking permit then you cannot park here. Sometimes the signs have hours and days attached as well.

Offence: \$89



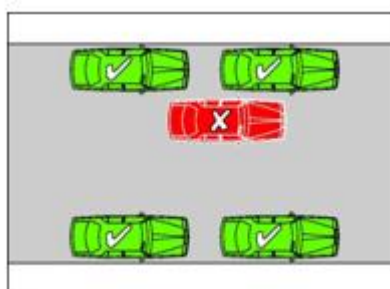
This means that parking is permitted however there is a time limit. If you park longer than the permitted time then this is an offence.

Offence: \$74



This is when you park unreasonably blocking driveways to take your child to school.

Offence: \$89



Double parked waiting to or picking up your children.

Offence: \$89