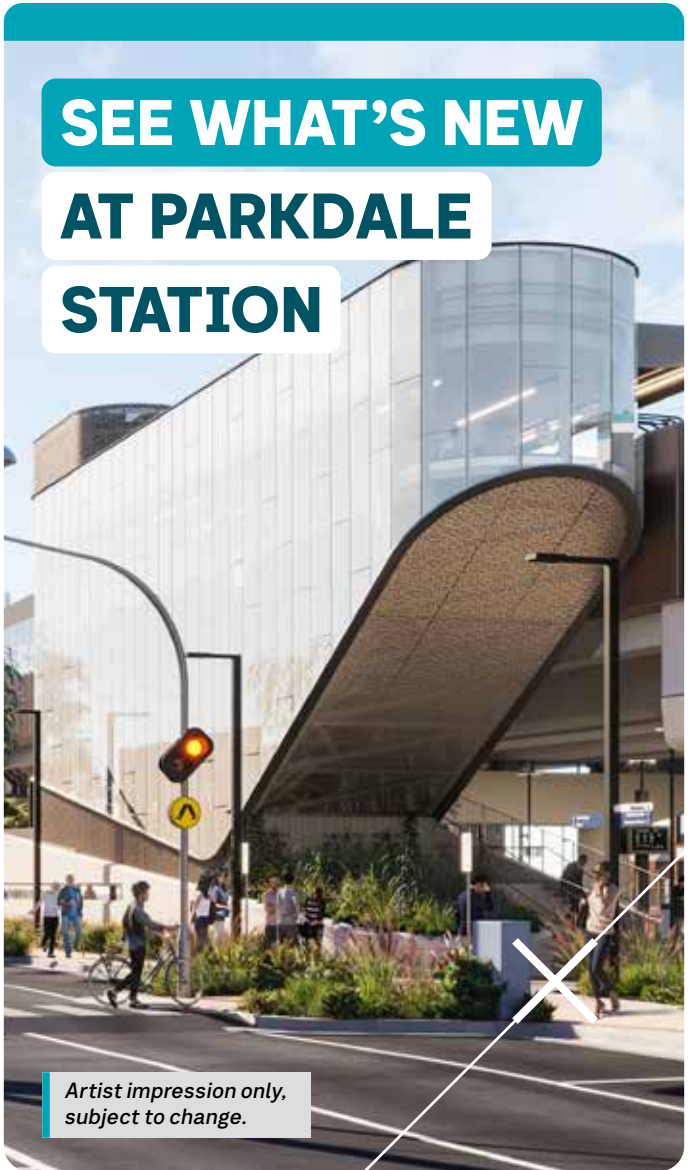


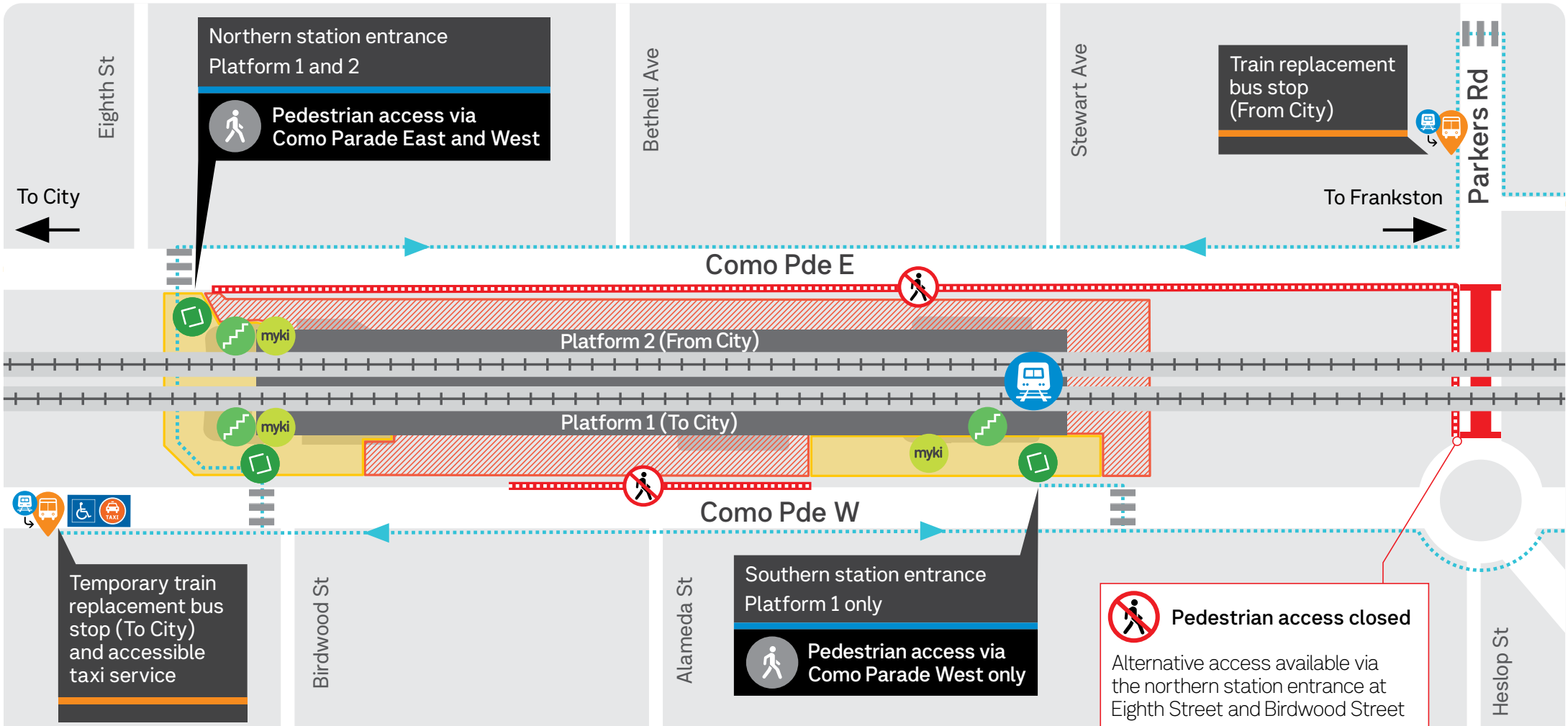
SEE WHAT'S NEW
AT PARKDALE
STATION



*Artist impression only,
subject to change.*

Station opens Friday 2 August

Parkdale Station Precinct



Temporary train replacement bus stop (To City) and accessible taxi service

Train replacement bus stop (From City)

Northern station entrance Platform 1 and 2
Pedestrian access via Como Parade East and West

Southern station entrance Platform 1 only
Pedestrian access via Como Parade West only

Pedestrian access closed
Alternative access available via the northern station entrance at Eighth Street and Birdwood Street

Legend

- Parkdale Station
- Construction area (No public access)
- No pedestrian access
- No vehicle access
- Forecourt
- Station entrance
- Pedestrian crossing
- Stairs to platforms
- Accessible taxi service
- myki card machine*
* Touch on/off and top up only
- Pedestrian path

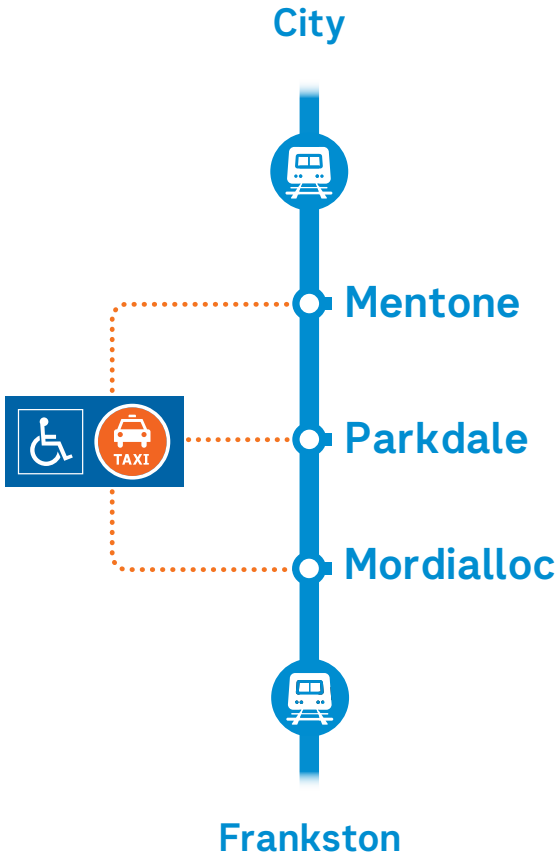
NOT TO SCALE

Lifts opening soon

Parkdale Station platform lifts will open in September. Until then, accessible taxis will be available for passengers who need lift access.

Taxis will run from Como Parade West at Parkdale Station to Mentone and Mordialloc stations.

Train replacement accessible taxi service



Works will continue around the station precinct over the coming months

From 2 August, your new station facilities include:

- Stair access to platforms 1 and 2 in the northern entrance
- Stair access to Platform 1 only in the southern entrance
- myki card machine
- CCTV and improved lighting.

When complete, the new station will feature:

- Lift and stairs to both platforms in the northern and southern entrances
- 49 passenger car spaces, including 2 accessible car spaces
- Parkiteer and bicycle hoops
- Pick-up, drop-off and taxi zone
- Station forecourt and new village green with seating and landscaping.



scan me

To learn more about your new Parkdale Station

Scan the QR code or visit levelcrossings.vic.gov.au/parkers-road

Plan your journey at ptv.vic.gov.au



For languages other than English, please call 9209 0147.

PUBLIC
TRANSPORT
VICTORIA **PT>**

