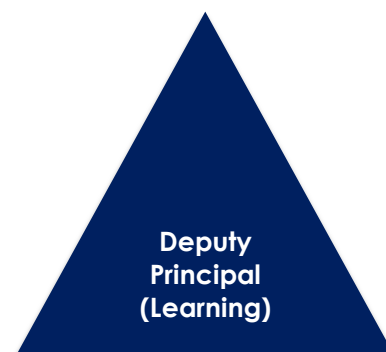
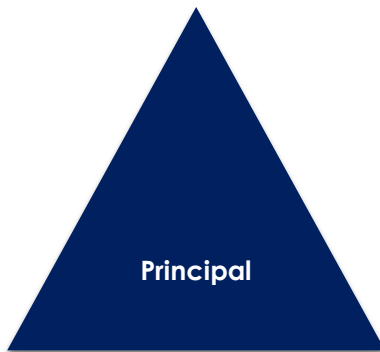


## Principal Team



## Leadership\* & Management Teams

**Engagement & Wellbeing**

Michelle - LT (Wellbeing & Support)\*  
 Helena - LT (Comm Eng & Participation)\*  
 Alex - Social Worker & Child Safety Officer\*  
 Ian - Health & Fitness Coordinator  
 Jackie - Mental Health Practitioner  
 Sam - Youth Worker / Medical Officer  
 Cam - HOL Artisan Teacher

**Inclusion & Support**

Julie - LT (Disability Inclusion & Support)\*  
 Rachel, Briana - Speech Pathologists  
 Julia, Brittany - Occupational Therapists

**Administration & Operations**

Matt - Business & Operations Manager\*  
 Halina - Principal EA & Finance Manager  
 Karen - Attendance Officer & OHSC Project Manager (0.5)  
 Anna - Assets & Procurement Manager  
 Kristina - Reception & SDTP Coordinator  
 Phil C - Facilities Manager  
 Graeme - Grounds Keeper  
 Lukas - IT Support Technician  
 Andy - DET Technical Support (TSSP)

**Transitions & Partnerships**

Bern - LT (Transitions & Partnerships)\*  
 Jan - PSD Coordinator

**Teaching & Learning**

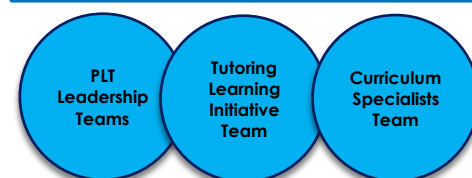
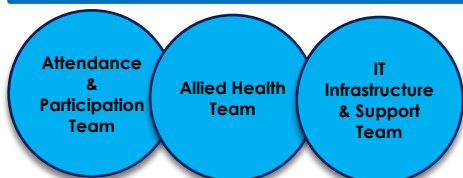
Kelly - LT (Curriculum & Assessment)\*  
 Gabi - Learning Specialist (Primary)\*  
 Sean - Learning Specialist (Secondary)\*  
 PLT Leaders (P-2, 3-4, 5-6, 7-8, 9-10, ASDAN, VCAL, Specialists)

**Tutoring Learning Initiative**

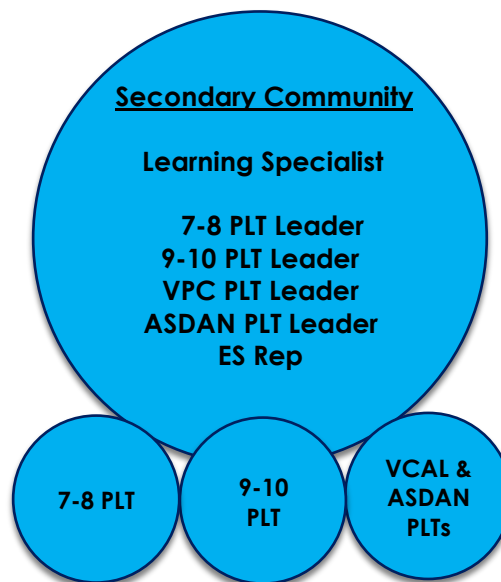
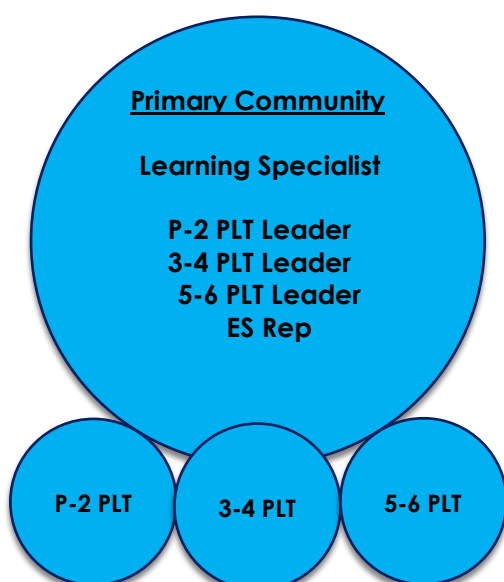
Kelly - Tutoring (TLI) Coordinator  
 Tutors - Sarah, Jess A, Laura

**Senior Secondary**

Vu - Jobs, Skills & Pathways Coordinator  
 Kathy - VET & SBAT Coordinator  
 Thana - Work Experience Coordinator  
 Christine - Admin & NDIS Liaison



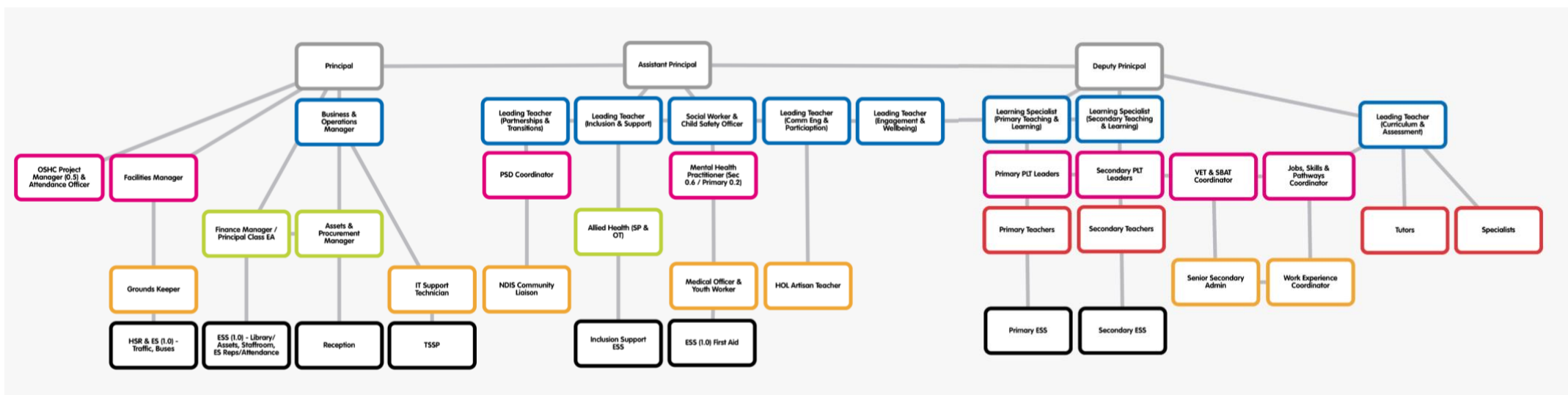
## Collaborative Learning Communities



## Reporting Lines 2022

PDP Manager	Direct Reports
Principal	Assistant Principal, Leadership (Learning) & Managers
Assistant Principal	Leadership (Wellbeing)
Learning Specialists	Teachers (Groups) & ESS (Groups)
Leading Teachers	Other Positions of Responsibility (POR)
Business Manager	Admin Staff

## PDP Reporting Lines



**School Council**

<b>Who</b>	<b>Office Held</b>	<b>Category</b>
Craig Barnett (due for reelection)	President	Parent
Nerida Auld (due for reelection)	Vice-President & Treasurer	Parent
Anthony Jackson	Executive Officer / Acting Principal	DET Representative
Matt Gravatt	Business Manager	DET / Staff
Halina O'Neill	Minute Taker	DET (Non-Voting Member)
Sarah Jarman	Member	Parent / DET
Jane Kabage	Member	Parent
Joseph Lawrence	Member	Community
Natalia Giglietta	Member	Community (Area Manager, OSHC)
Noah Baker (until new appointment)	School Captain	Student
Brydee Auld (until new appointment)	School Vice-Captain	Student

*Positions to be held: President, Vice President, Treasurer & Executive Officer/Principal*