



IVANHOE FAIR

PRIMARY SCHOOL

New to the school? Not been involved with the Fair before? Want to know more about what you can do?

Q. When is the Fair?

A. The Fair is run every second year, on the third Saturday in November.

This year is Saturday 20th November.

The event will run from 12 noon til 5:30pm.

Q. How do I get involved?

A. There's many ways you can be involved:

- join the Committee
- run a class stall
- help source and collect donations
- spend time on a stall on the day
- volunteer your specific skill to help out

Q. How much time do I need to give?

A. Up to you! We request that you spend a minimum of an hour on a stall on Fair day, but you can be spending time in the preparation period as well. You may be able to volunteer an hour, a day, or multiple hours. Let your class rep know!

Q. How do I know what stall I am on, and how do we run it?

A. Early in Term 2 there will be a meeting held for reps from every class. At this meeting each class will be given a stall to run. Some stalls require more time, so multiple classes are assigned to them. Your rep will advise the class what your stall is, and what is needed to make it happen. Classes will be given information on how to run the stall, and details for any suppliers used in the past.

Q. What stalls do the classes run?

A. Books, Toys, BBQ, Haunted House, Body Art (face painting, temp tattoos, hair colours), Silent Auction/ Raffle, Cakes, Garden/Plants, Bric a Brac, Coffee, Dunking Machine, Wine Lucky Dip, Snow Cones, Popcorn/Fairy Floss, Ice Cream, Chocolate Trailer, Info/Tickets, Curry.

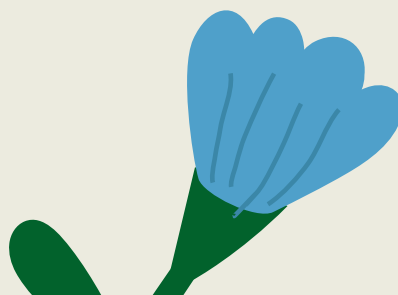
Q. What other stalls do we have, run by outside people?

A. Rides (for all ages), Food trucks, Animals/Pony rides, Local shops stalls, Student Stalls, Sports clinics, Live music, Bar, and more!! If you, or someone you know would be keen to have a stall – let the Fair Convenor know.

Q. What are Student Stalls?

A. Great chance for the student entrepreneurs to get started! Students are invited to run their own stalls, keeping their profit for themselves (although some choose to make a donation to school too). We aim to ensure there are not multiple stalls the same, so students are welcome to team up.

Closer to the Fair, Ms Kelly and Ms McCormick will run some information and ideas sessions at lunch times to help students put their stalls together. There will be a limited number of these stalls available, so keep an eye out for applications to open.



Q. What is the Class Art project?

A. Each Fair year, the classes create art pieces that will be auctioned as a part of the Silent Auction. In 2021 this will be coordinated by Ally Minatsis. Closer to the Fair she will seek a parent (or multiple parents) from each class to help come up with an art project, and assist the children to create, which will be hung in the school foyer for everyone to view before the Fair. These projects have been a myriad of things – from photography to macramé, outdoor sculptures to fingerprint paintings. So much beautiful work comes from this, and there's always some competitive bidding for these unique items!

Q. How can I donate?

A. Running a wonderful day requires lots of donations! At various times throughout the year the Fair will seek donations of books, toys, wine, chocolate, cakes, plants, and Haunted House decorations. This year there has been a lot of requests for a Bric a Brac stall, so we will be collecting quality items for this for the first time. These items *must* be in good condition, full sets. Small furniture, quality clothing, decorations, outdoor gear, sports equipment, jewellery, etc.

Q. How can my company or workplace help?

A. We also need Silent Auction donations – so ask your work! Ask friends to ask their work! We love products, vouchers, services, experiences – anything really.

If you work for (or own) a company who would like to be one of our main supporters, they can provide this in cash and/or supplies/services.

Q. What is the goal of the Fair?

A. The Fair is a community event, aiming to bring us all together for a fun-filled day. Any funds raised go towards improving the school for our children. This year we hope to be able to build a new playground!

Q. I want to get involved, or ask something not listed here – what do I do?

A. Call or email our Fair Convener:

Cat Atkinson

0421 176 673

climbatree1@gmail.com



IVANHOE FAIR
PRIMARY SCHOOL

SATURDAY, 20 NOVEMBER
12 noon to 5:30pm