

# Young Innovators Program



*A COLLABORATION WITH WYNDHAM CITY  
COUNCIL & BRIMBANK CITY COUNCIL*

**2021 INNOVATOR  
INFORMATION BOOKLET**



**Equal Ed**  
Empowering the Future



# Contents



**Who are we & Our mission ..... 2.**

**The Young Innovators Program ..... 3.**

**Aims of the Program ..... 4.**

**Program Deliverables & Outcomes ..... 5.**

**Your Involvement ..... 6.**

**Contact Us ..... 7.**

# WHO ARE WE?

---

Equal Ed is a **social enterprise** that works with schools, councils, and NGOs to provide a variety of services to young people.

Founded in 2016, our work ranges from working with city councils on **community strengthening projects** to designing and running student **development workshops** in secondary schools.



# OUR MISSION

---

Is simple.

Work **collaboratively** with our communities to deliver **innovative** and **engaging** services and solutions.

And empower young people to reach their **goals** and **potential** by increasing access to **learning** and **development** opportunities.

# The Young Innovators Program

This program is an initiative run by Equal Ed, and proudly partnered in collaboration with [Wyndham City Council](#) and [Brimbank City Council](#).

It will provide unique experiences for young people to **gain and apply key skills** to drive **social innovation**.

Over the course of 6 months, 24 young innovators will participate in a wide range of **workshops and experiences** with organisations, businesses and institutions to foster their skills and capacities in creating positive change in their communities.

They will also be **mentored** by council staff and have an opportunity to **design and pitch a project or innovation** and receive **seed funding** to address a particular need in their community.

---

## Our Innovators

24 individuals between the ages of 18 - 35, who live, work or play in Melbourne's West.

Participants will demonstrate strong motivation and capacity to:

1.

**Learn more about effectively creating an impact in their communities**



2.

**Bring an idea for change and innovation to life**

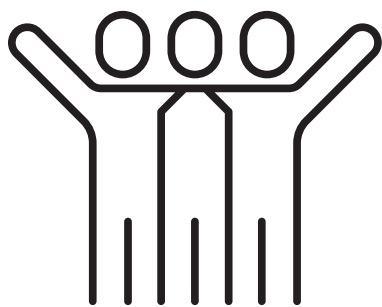


3.

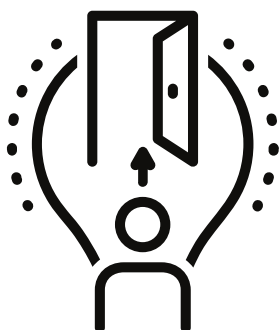
**Gain new skills and experiences to further their potential**



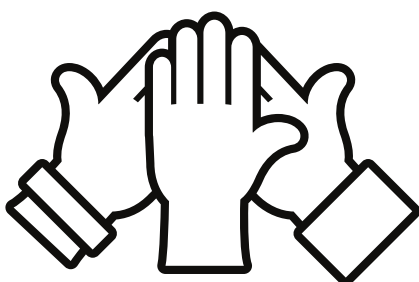
# Aims of the program



**Empower** motivated young people from the diverse communities of Melbourne's West to be drivers of positive change in their communities.



Provide opportunities for young people to gain skills, capacities and knowledge to **further their careers and potential.**



Increase the sense of **inclusion and belonging** within the communities in Melbourne's West.



Foster **civic engagement** in young people through a sense of ownership and involvement in their local municipalities.

# Program Deliverables & Outcomes

The Young Innovators Program contains 5 key deliverables for participants to bring their ideas, program or initiative to the community.



## PD WORKSHOPS

Participants enhance their **skills and capacities** to develop a social innovation or initiative.



## PROJECT DESIGN

Participants design a project, initiative or innovation to solve an issue or improve their community.



## MENTORING

Council staff and leaders will mentor participants throughout the program.



## PROJECT PITCH

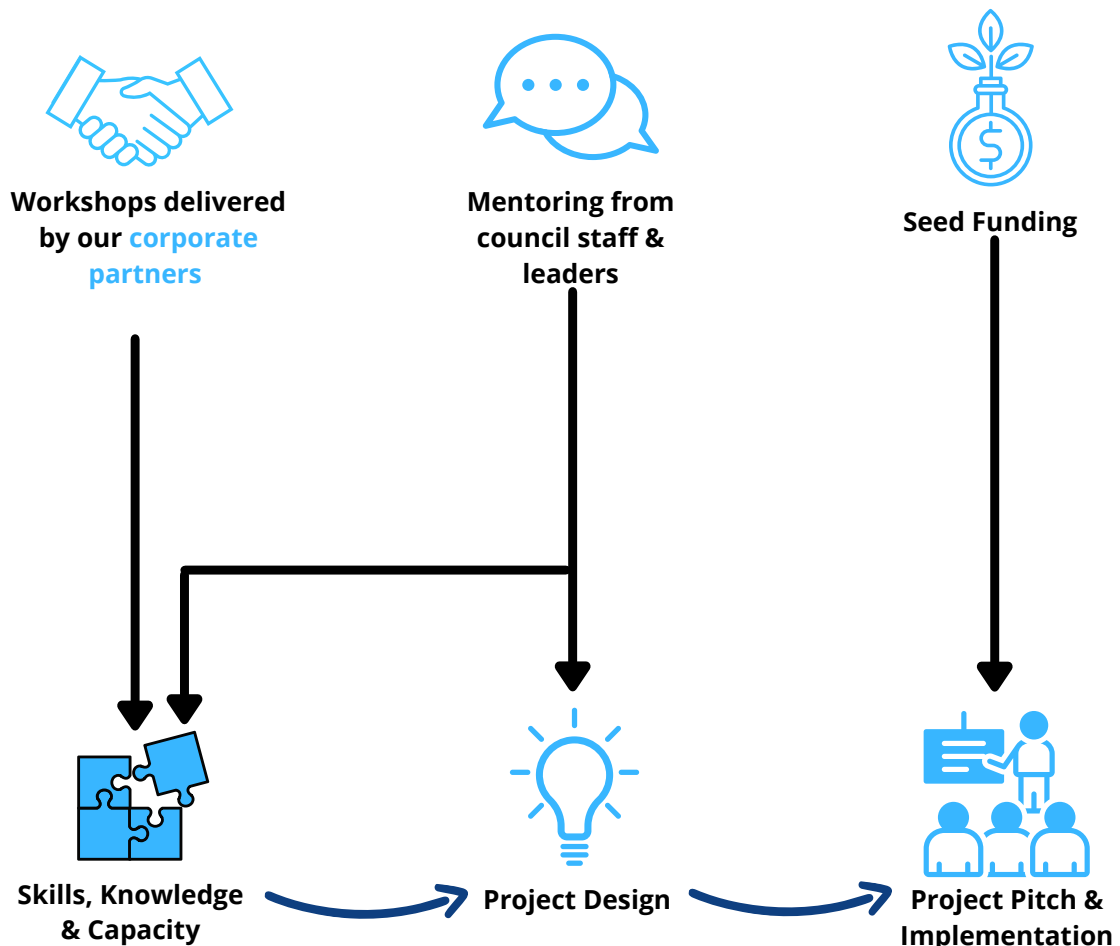
Participants share their projects to councils & community stakeholders.



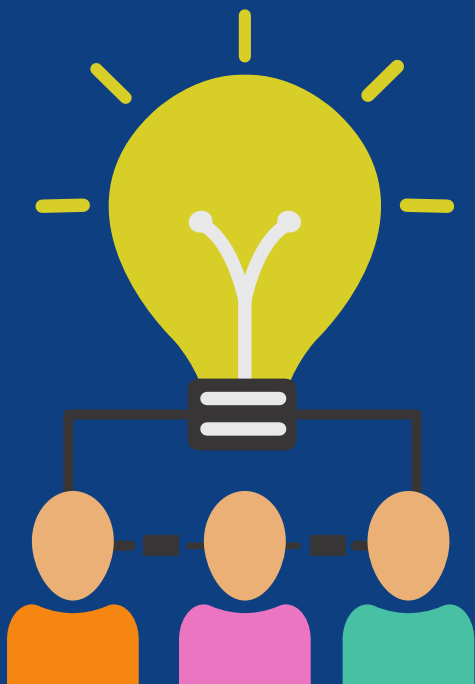
## SEED FUNDING

Equal Ed will provide \$5,000 to support the implementation of participant generated projects.

These elements come together to form a **cohesive program**, with our corporate partners playing a key role.



# Your Involvement



Innovators will have a number of one-off and ongoing commitments throughout the program.

## Ongoing:

- 1 x 60-90mins mentor meeting / fortnight
- 1 x 2-4hr workshop, event, or experience / fortnight
- 1 x 15mins check-in with Equal Ed staff / month

## Once off:

- 1 x 2.5hr induction session at the start of the program (late September)
- 1 x half day pitch event at the end of the program (March 2022)

*Innovators will leave the program with...*

---

Key **community insights**, and deeper **understandings** of the social impact sector.

A **strong network** of other like-minded young people who will be developing initiatives **across Melbourne's West**.

**Exposure** to key **community** and **corporate** organisations, with opportunities to **learn** and **connect**.

The **capacity** and **confidence** to pitch your project idea, and **continue your community impact journey**.

# GETTING IN TOUCH.

**Speak with our team to  
find out more.**



Email us:  
[info@equaled.org](mailto:info@equaled.org)



Visit us at:  
<https://www.innovators.equaled.org/>



Or call our Managing Director:  
[+61 426 833 686](tel:+61426833686)

