

# Parking in the City of Marion



**A straightforward guide to safe, sensible,  
and thoughtful parking.**

# Rules that may surprise you

All of the parking examples in the diagrams below are in contravention of the Australian Road Rules and subject to expiation.

There are only three correct ways to park:

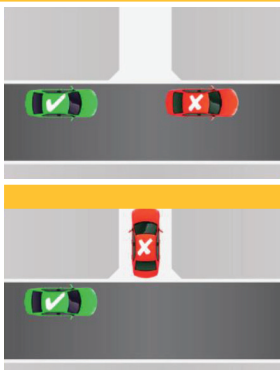
- in a designated car park
- legally on the road by the kerbside in compliance with any instructional signs or lines
- within the boundary of your own property.



## Driveways

Australian Road Rule no. 198 (2)

You must not park your vehicle on or across a driveway (even partially). Even if this driveway is to your own property.



You are allowed to stop across a driveway only if you are dropping off, or picking up passengers and do not leave the vehicle unattended and complete the dropping off, or picking up within two minutes of stopping. Council also asks that when parking vehicles near driveways that you be aware of the resident's access requirements into their property

## Parking on the Council Verge (Nature Strip)

Australian Road Rules no. 197 (1)

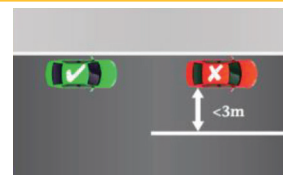
For the safety of, and as a courtesy to, pedestrians, and for the better maintenance of your environment, you must not park (even partially) on footpaths or the nature strip.



## Parking Near Solid White Lines

Australian Road Rule no. 208 (6)

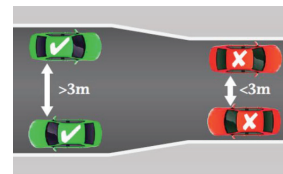
If the road has a continuous dividing line (solid white line) or a dividing strip, you must position your vehicle so that there is at least three metres between your vehicle and the continuous dividing line or dividing strip.



## Parking on Narrow Roads

Australian Road Rule no. 208 (7)

A narrow road is defined as a road less than seven metres wide which can cause parking issues when vehicles park opposite each other.



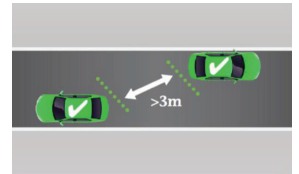
The remaining width is typically insufficient for many cars and may not allow access for larger vehicles including emergency service vehicles such as fire trucks and ambulances as well as waste collection trucks. You must position your vehicle so that there is at least three metres of the road alongside your vehicle enabling other vehicles to pass.



## Narrow Roads

Australian Road Rule no. 208 (8)

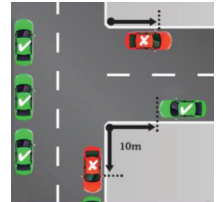
You must position the vehicle, so your vehicle does not unreasonably obstruct the path of other vehicles or pedestrians.



## Parking near an intersection

Australian Road Rule no. 170 (3)

You must not stop within 10 metres from the nearest point of an intersecting road or at an intersection without traffic lights unless parking is permitted by a traffic control sign.

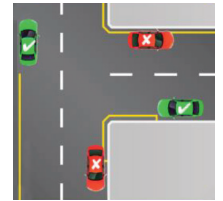


This also includes laneways which are classed as a road for Australian Road Rule purposes.

## No stopping on a road with a yellow edge line

Australian Road Rule no. 169

You must not park or stop at the side of a road marked with a continuous yellow edge line.



# Parking at schools

## Follow the School Rules and Keep Our Children Safe.

Here at City of Marion, we are very aware of the need to keep our children safe on the way to and from school, which is why there are a variety of parking restrictions at, and near, our schools.

These restrictions also help to optimize traffic movement, making drop-offs and pickups as safe and easy as possible.



## No Stopping Zones

Australian Road Rules no. 167

These zones are usually right next to school entrances and the approach and departure sides of school crossings. This helps to keep traffic to one side of the street, reducing congestion.

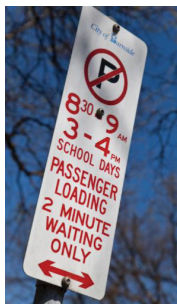


You must not stop your vehicle in a No Stopping Zone, not even for a few seconds.

## No Parking Zones

Australian Road Rules no. 168

There is a two-minute Passenger Loading Limit in a No Parking Zone, which means you may stop to immediately pick up or drop off children.



Please drive off as soon as possible, as this really helps with the quick and safe turnover of vehicles. You must not leave your vehicle parked or unattended in a no parking zone.

## Yellow Lines

Australian Road Rules no. 169

The yellow lines in the streets around schools are there to provide even greater safety near corners and driveways. You must not park your vehicles (even partially) on a yellow line at any time.

## School Crossings

Australian Road Rules no. 171

The safety of school children, teachers and parents is greatly enhanced by dedicated and clearly marked school crossings. You may not stop or park within 20 metres of the approach or 10 metres of the departure side of any school crossing.

## Double Parking

Australian Road Rules no. 189

Drivers must not stop next to a parked vehicle when picking up or dropping off children, not even for a few seconds. This practice creates a dangerous situation at any time on any street, but the risks are greatly increased near schools, especially when children are entering or leaving.

# The Signs to Look For

**There are many good reasons to look for and follow instructions on local parking signs.**

This helps to reduce traffic congestion, improve road safety, allow buses, service and emergency vehicles to navigate easily and effectively, as well as improving the overall look and feel of the environment. You will also avoid fines that are applicable to parking offences under Australian Road Rules.



## Difference between a 'No Stopping' (No Standing) sign and a 'No Parking' Sign

### No Stopping

Australian Road Rule no. 167

To 'stop' a vehicle means to stop and remain stationary for even a short period of time. You must not stop or park your vehicle in any area where a 'No Stopping' sign or a continuous yellow edge line applies, even to pick up or set down passengers or goods.



### No Parking

Australian Road Rule no. 168

You must not park your vehicle in an area where a 'No Parking' sign applies, unless:

- you are dropping off or picking up passengers or goods and
- you do not leave the vehicle unattended – that is, move more than 3 metres away and
- you complete the dropping off or picking up as soon as possible - within two minutes.



## Stops and Zones

Australian Road Rule no. 183

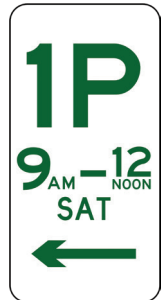
To assist with the efficient operation of public transport in your area you must not stop your vehicle in an area that is indicated by a Bus Zone sign. If there is no sign, you must not stop within 20 metres of the approach of a Bus Stop, or 10 metres following it.



## Permissive Parking

Australian Road Rule no. 205

These signs, known as Permissive Parking signs, are used in areas that attract high levels of vehicles, and are there to help with a regular 'turn over' of vehicles so that more people get a chance to park.



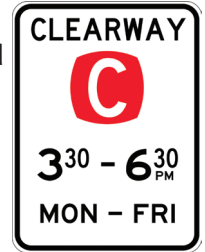
The 'P' actually stands for Permissive, and the number indicates how long you can park there continuously before having to move your vehicle. These signs also usually show the times and days to which these restrictions apply.



## Clearway

Australian Road Rule no. 176

These signs are usually installed on main arterial roads that see a high volume of traffic at certain times of the day. It is both unsafe and illegal to park or stop during the times and days noted on the signs as it will seriously impede the flow of traffic.



## Bicycle Lanes

Australian Road Rule no. 153

You cannot stop a vehicle or any part of that vehicle in a Bicycle Lane during the times specified on the Bike Lane sign. If there are no times indicated on the sign, the Bike Lane is in operation 24 hours.



Bike Lanes are a single roadside lane indicated by a solid white continuous road marking. The bicycle symbol is painted on the road on intersections, which form part of the Bike Lane

## Residential Parking Permits

If you live on a street that has parking restrictions with resident exemption you may be eligible for a Residential Parking Permit.

The exemption does not apply until the permit is issued and clearly displayed on your vehicle.

Download an application form at [marion.sa.gov.au](http://marion.sa.gov.au) or call **8375 6600**.

**The City of Marion thanks you for your considerate parking, which enhances the safety and amenity of our community.**

### **Australian Road Rules**

[austlii.edu.au/au/legis/sa/consol\\_reg/arr210/](http://austlii.edu.au/au/legis/sa/consol_reg/arr210/)

### **Expiation of Offences Act 1996**

[aaustlii.edu.au/au/legis/sa/consol\\_act/eooa1996209/](http://aaustlii.edu.au/au/legis/sa/consol_act/eooa1996209/)

 245 Sturt Rd, Sturt SA 5047

 8375 6600

 PO Box 21, Oaklands Park SA 5046

 [council@marion.sa.gov.au](mailto:council@marion.sa.gov.au)

**[marion.sa.gov.au](http://marion.sa.gov.au)**

*Designed by CoM Marketing and Communications 2023*