

Tram network upgrade

Melville Road, between Fitzgibbon Avenue, Brunswick West and Braemar Street, Pascoe Vale South

June 2023

Update 1

Department of Transport and Planning (DTP) and Yarra Trams regularly carry out maintenance and renewal work across the tram network to improve operations and passenger experience. The tram tracks on Melville Road, between Fitzgibbon Avenue and Braemar Street, have reached the end of their life cycle. To continue to deliver a safe and reliable tram service to the area, these tram tracks must be replaced.

Melville Road, between Fitzgibbon Avenue and Braemar Street, will have disruptions from Sunday 16 July, including a full road closure in two stages.

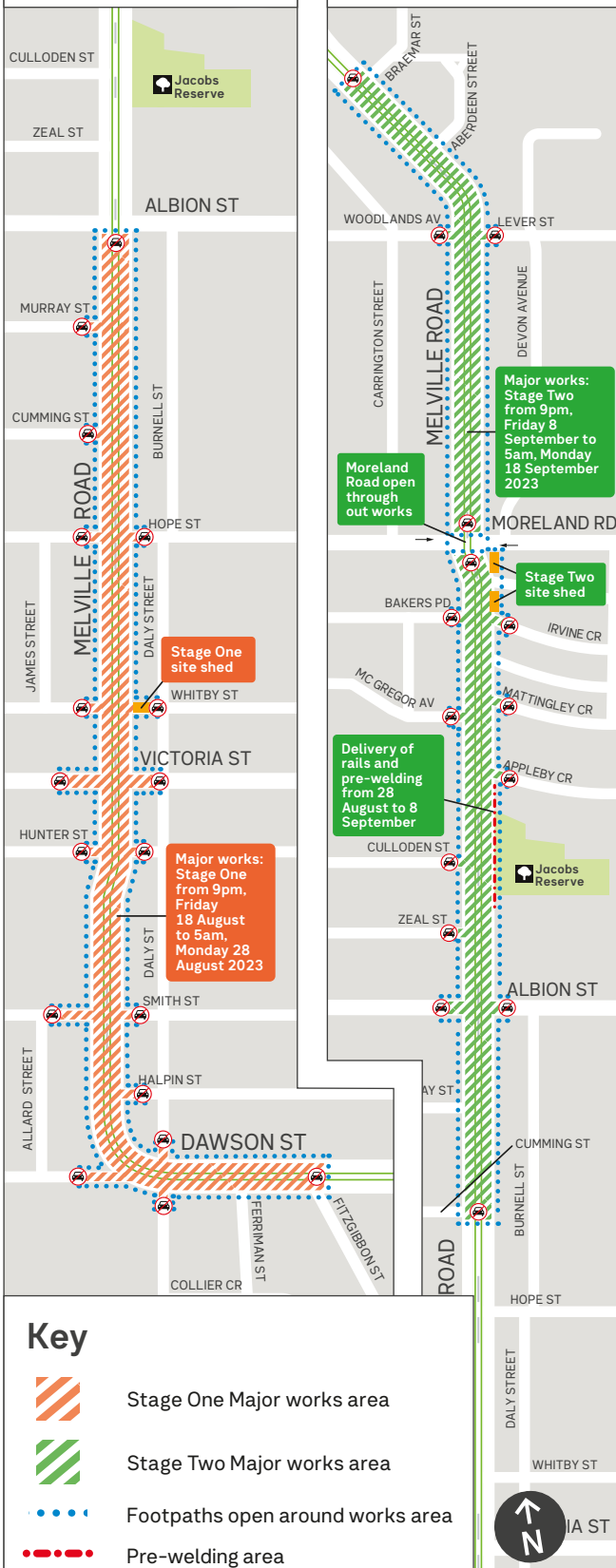
	Early works	Major works
When	9pm to 5am, Sunday 16 July to Friday 8 September 2023 (Sunday to Thursday nights only)	(24-hour works) – Stage One: From 9pm, Friday 18 August to 5am, Monday 28 August 2023 between Fitzgibbon Avenue and Albion Street. – Stage Two: From 9pm, Friday 8 September to 5am, Monday 18 September 2023 between Cumming and Braemar streets.
What’s happening	<ul style="list-style-type: none"> – Setting up site and traffic management. – Identifying underground services through non-destructive digging and taking core samples of the road and tramway. – Installing new poles and removing old redundant poles. – Delivery and welding of rails. – Installing site sheds. – Reinstating the site. 	<ul style="list-style-type: none"> – Setting up site and traffic management. – Delivery and welding of rails. – Excavation of old and installation of new road surface and tram tracks. – Power and pole renewal. – Kerb to kerb fencing. – Installing traffic signal. – Road and line marking. – Reinstating the site.
What to expect	<ul style="list-style-type: none"> – Nightly lane, intersection and parking closures on Melville Road between Fitzgibbon Avenue and Braemar Street. – Mostly medium levels of noise during the night. Some high levels of noise. – Vehicles, trucks, machinery and contractors on site. 	<ul style="list-style-type: none"> – 24-hour works. – Full kerb to kerb road closure and fencing of Melville Road. – Extremely high levels of noise. – Detours for bike riders, pedestrians and traffic. – Service changes to Route 58 trams.



Major works: 24-hour works

Stage One from Friday 18 August to Monday 28 August 2023

Stage Two from Friday 8 September to Monday 18 September 2023



Major works: 24-hour works



- Stage One: From 9pm, Friday 18 August to 5am, Monday 28 August 2023.
- Stage Two: From 9pm, Friday 8 September to 5am, Monday 18 September 2023.
- Setting up site and traffic management.
- Delivery and welding of rails.
- Excavation of road surface and tram tracks.
- Installation of new tracks, power and pole removal.
- Removal of existing crossover in Dawson Street during Stage One.
- Relocation of existing crossover north of Moreland Road during Stage Two.
- Kerb to kerb fencing along all sections of the site.
- Line marking and site reinstatement.
- **Welding and delivery of rail will also continue between the two stages of major works until Friday 8 September. Access to some properties may be affected.**

Road and parking



- **Stage One:** Full kerb to kerb closure of Dawson Street and Melville Road between Fitzgibbon Avenue and Albion Street.
- The intersection of Albion Street and Melville Road will remain open to east/west traffic during Stage One.
- **Stage Two:** Full kerb to kerb closure of Melville Road between Cumming and Braemar streets.
- The intersection of Albion Street and Melville Road will be closed during Stage Two.
- Dawson Street and Melville Road will be open between Fitzgibbon Avenue and Cumming Street during Stage Two.
- **The intersection of Moreland Road and Melville Road will remain open to east/west traffic throughout Stage One and Two.**
- On-street parking and some side streets will be closed within the work areas for materials storage during both stages.
- **From 28 August to 8 September pre-welding of rail will happen on Melville Road between Albion Street and Appleby Crescent. Access to some properties may be affected.**
- Melville Road will be closed after 9pm as required, when rail is being delivered.
- Traffic management and signage will direct traffic. Please follow signage around works.

For more information about the project visit yarratrams.com.au/projects or call 1800 800 007.

Authorised by the Department of Transport and Planning, 1 Spring Street, Melbourne.

Early works continued

Noise and dust



Mostly low-to-medium levels of noise during the night. Some high levels of noise when rails are delivered and during service investigation works.

Major works continued

Public transport



There will be service changes to tram Route 58. Visit: yarratrams.com.au/servicechanges



Bus routes 503, 506, 508, 509 and 951 will be impacted. Visit: ptv.vic.gov.au

Pedestrians



Footpaths will remain open around the works area. There may be temporary footpath closures around the works with local detours in place. Look out for the pedestrian crossing signage along the work site to cross safely.

Noise and dust



Construction will occur 24-hours a day.

Noise and dust are unavoidable, but we will work to minimise this as much as possible and complete the noisiest works between 6am and 10pm.

Extremely high levels of noise are expected during the first week of the works, while the tracks are dug out and rubble removed. For the rest of the work there will be short periods of high-level noise.

Open for business



Businesses located around the works area will remain open during the works. Please continue to support your local businesses during these essential infrastructure works. Pedestrian access to these businesses will remain open at all times.

About the project

Yarra Trams in partnership with Department of Transport and Planning (DTP) delivers ongoing maintenance and renewal works across the Melbourne tram network to ensure a safe and reliable tram service for future generations.

Yarra Trams invests about \$65m in the network annually carrying out a range of maintenance and renewal works aimed at improving operations and passenger experience.

Tram tracks along Melville Road, between Fitzgibbon Avenue and Braemar Street, have reached the end of their life cycle. To continue to deliver a safe and reliable tram service to the area, these tram tracks must be replaced.

We will also upgrade tram poles, powerlines and remove the tram crossover from Dawson Street and relocate the existing crossover north of Moreland Road.

Doing these works together means we can limit impacts on the community through fewer road closures and deliver the benefits of renewed tram infrastructure sooner.

To find out more:



yarratrams.com.au/projects



projects-comm@yarratrams.com.au

Close out works

Once the major works are complete, we will need to do some close out works. This work may include pole installation and removal, permanent line-markings and any remedial work picked up post major works.

We appreciate your patience while these works are completed.



For information in other languages:

普通話	9321 5454	廣東話	9321 5441
Italiano	9321 5444	ਪੰਜਾਬੀ	9321 5445
Ελληνικά	9321 5443	हिन्दी	9321 5442
Việt-ngữ	9321 5449	සිංහල	9321 5446
عربي	9321 5440	Español	9321 5447

If your language isn't listed visit ptv.vic.gov.au/languages or call **9321 5450**.

For more information about the project visit yarratrams.com.au/projects or call **1800 800 007**.

Authorised by the Department of Transport and Planning, 1 Spring Street, Melbourne.

