

**Task 1:** Take a look at the following pictures and try to change your facial expressions and/or body language so that your face/body looks like and is in the same position as the one in the picture:

1.



2.



3.



4.



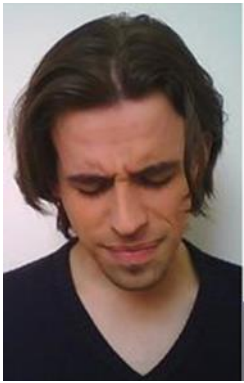
5.



6.



7.



8.



9.



10.



Can you guess what each character is thinking or feeling by the way they use their facial expressions or body language?

**Think:** What have you learned from copying these characters?

**Remember:** In order to portray a good character, it's important to pay attention to small details