



YEAR 6 POLO SHIRTS AND JACKETS FOR 2023

Dear Year 6 2023 Parents,

Year 6 students are being offered the opportunity to wear Graduation tops. The tops will have the school logo on the front with "Year 6 2023" and on the back will be St Brigid's 2023 with all the student's first and surnames on the back.

The cost of the polo top is \$45.00

The cost of the jacket/hoodie will be \$60.00

PSW have provided us with Sizing Charts for both the Polo tops and the Hoodies. Please see attached charts. We do have some sample hoodies if you would like to try them on. They will be available to try on next week - Tuesday 9th to Thursday 11th before and after school in the Office.

Please select the size that matches your child's chest measurement or the size up if you want something slightly bigger. Eg. If your child's chest measurement is 50cm you would be selecting a 16.

We ask that you place your order via CDFpay:

[Click here](#) for link to CDFpay

Please place your order no later than Wednesday 7th September.

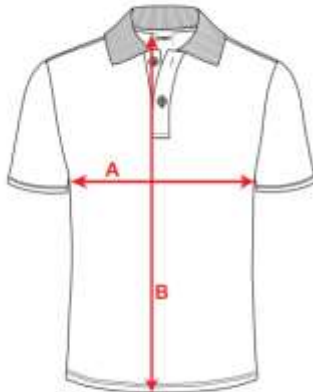
****This is the only opportunity to place an order as they are specially printed, so please ensure you order enough for the entire year****

If you do not place an order your child is expected to wear the uniform as per previous years. If you have any queries, please contact me via email principal@sbmord.catholic.edu.au.

Yours sincerely
Wendy Sullivan

FIND YOUR FIT

POLO



1. Choose a t-shirt you have that fits you well.
2. Lay it flat and smooth out the seams - don't stretch it.
3. To establish your chest measurement, lay a tape measure across the front from armpit to armpit.
(Refer to RED LINE marked A on the diagram on the left - 2cm below armpit)
4. To establish the length, lay a tape measure from the centre back neck where the collar meets the garment and measure down to the hem edge.
(Refer to RED LINE marked B on the diagram on the left)
5. Refer to the chart below and select the size that is closest to your measurement.

If your measurement is inbetween the below numbers then we recommend you choose the larger size.

SIZE	10/3XS	12/2XS	14/XS	16/S	18/M	L	XL	2XL	3XL	4XL
A CHEST cm	43.5	46	48.5	51	53.5	56	59	62	64.5	67
B LENGTH cm	56.5	60	64	67	70.5	73	75	77	77	77



Property of PSW. Copyright 2020

FIND YOUR FIT

JACKET



1. Choose a jacket you have that fits you well.
2. Lay it flat and smooth out the seams - don't stretch it.
3. To establish your chest measurement, lay a tape measure across the front from armpit to armpit.
(Refer to RED LINE marked A on the diagram on the left - 2cm below armpit)
4. To establish the length, lay a tape measure from the centre back neck where the collar meets the garment and measure down to the hem edge.
(Refer to RED LINE marked B on the diagram on the left)
5. Refer to the chart below and select the size that is closest to your measurement.

If your measurement is inbetween the below numbers then we recommend you choose the larger size.

SIZE	10/3XS	12/2XS	14/XS	16/S	18/M	L	XL	2XL	3XL	4XL
A CHEST cm	46.5	50	52.5	55	57.5	60	63	66	68.5	71
B LENGTH cm	54.5	57	60.5	64	67.5	70	74	74	74	74



Property of PSW. Copyright 2020