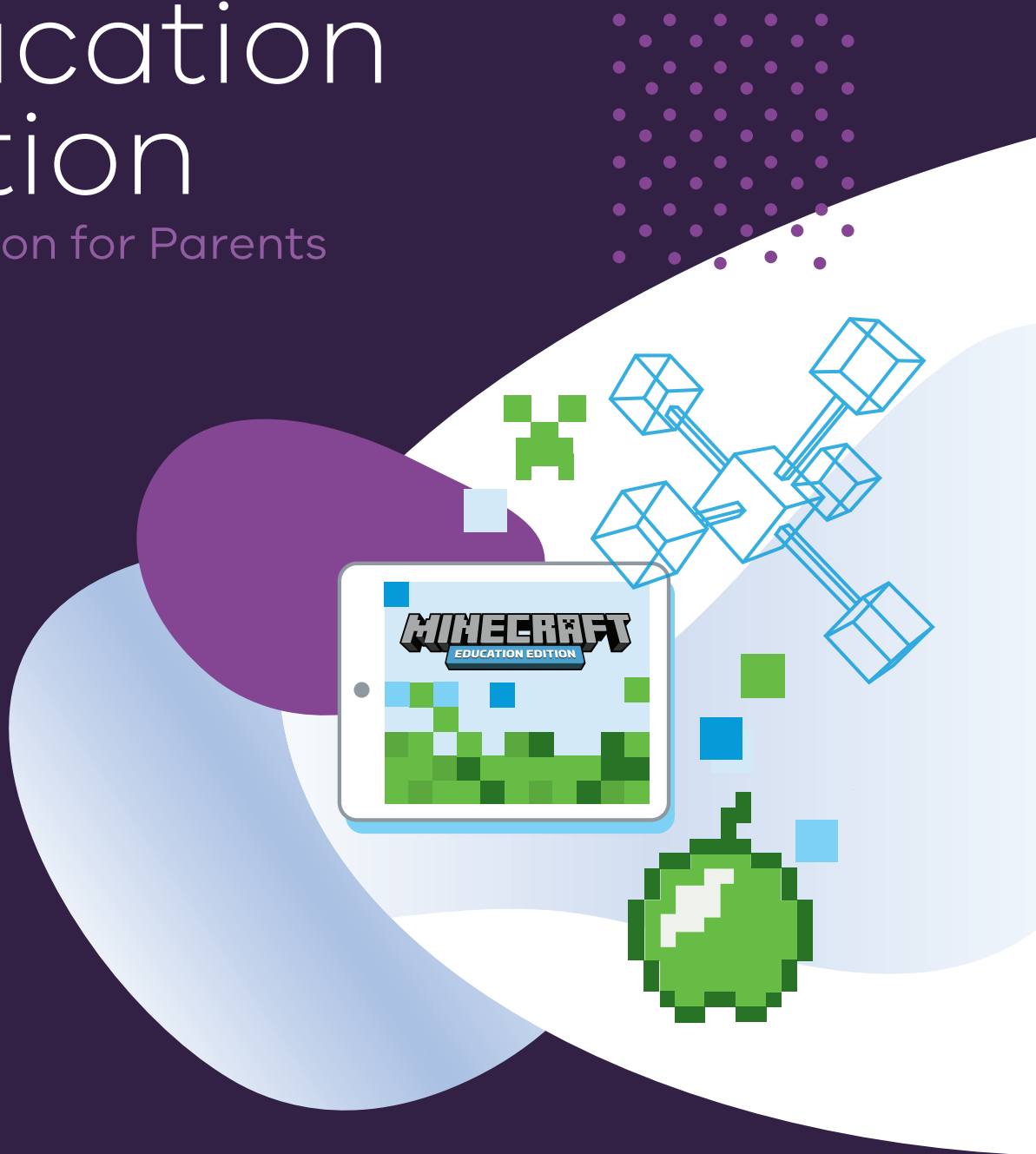
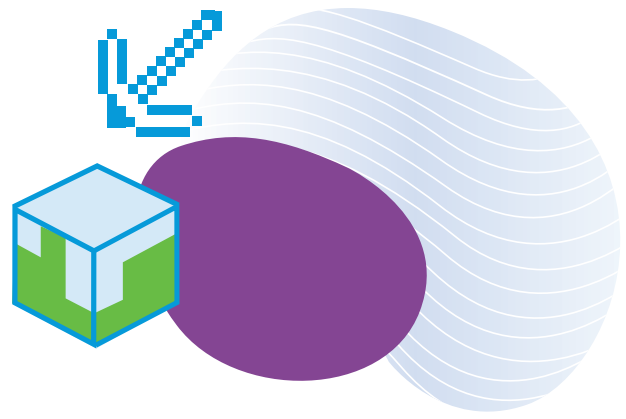


Minecraft Education Edition

Information for Parents





Information for parents

The Department of Education and Training (Department) and your school are using online learning services to support learning and teaching. This pack provides information on one of the online services, Minecraft: Education Edition and advice in relation to its safe and responsible use.

What information needs to be collected?

- Name, year level, home group and school.
- Student's Department username and password.

Why is this information needed?

- To control access to the online services.
- To prevent unauthorised access to student's work

When could this information be accessed by others?

- By support staff to fix issues
- Where required by law
- Never for advertising or marketing purposes

About Minecraft: Education Edition

Minecraft: Education Edition is a rich, open collaboration and learning platform that supports curriculum-based learning while encouraging students to think for themselves and collaborate with peers to transform their learning.

What are the benefits for using Minecraft: Education Edition

- Builds skills around particular subject such as science, technology, engineering and mathematics (STEM), history, geography or coding.
- Supports students to engage in virtual learning experiences that directly link and expand on the subjects being taught in the classroom.
- Teaches students to be 'digital citizens' through the use of an online system where they need to work together to solve problems.
- Promotes creativity, problem solving and critical thinking.
- Allows students to actively collaborate with their classmates on school work.
- Helps students build working relationships with each other.
- Promotes knowledge sharing as students guide each other on how to perform tasks.
- The Chemistry Update allows students to experiment with chemical reactions safely.
- Portfolios and cameras in Minecraft: Education Edition allows students to provide evidence of their learning for assessment.

How is this different to my child playing Minecraft at home?

- The Education Edition of Minecraft has been specifically created to be used in educational settings. A clear learning objective is required for successful experiences in Minecraft: Education Edition.
- Access to the game is teacher-led with teachers having access to additional functionality that allows them to control the world - including locking down areas and the ability to move student avatars.

How is my child safe while playing Minecraft : Education Edition?

- Access to Minecraft: Education Edition is through the Student's Department username and password.
- The Department has conducted a Privacy Impact Assessment on O365 which covers usage of Minecraft: Education Edition.
- Outside server access has been completely removed from the game, ensuring that the connections students can make in Minecraft: Education Edition are only with other students and teachers with a Department login.

