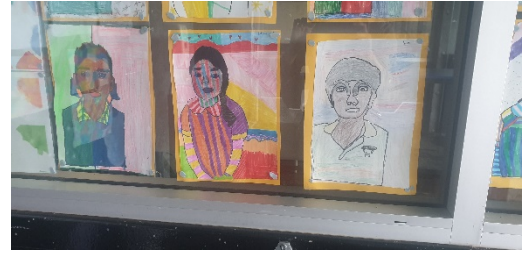


5A Newsletter article

In 5A, we explored artworks of Roy Litchinsen (October 27, 1923 – September 29, 1997), who was an American pop artist. Using comic strip as his main inspiration, Lichtenstein



produced dark outlined paintings that replicated that style. Images were often divided into various areas and filled with vibrant colours and patterns. Inspired by Roy Litchinsen's artwork we crated self-

portraits at the start of Term 1.

Miss Castgir gave us print out of our actual photos, which we had to put against the window, to trace. We then had to use a black marker to trace around the face, add background lines and other details. Finally, we used brightly coloured markers to colour our art work and create interesting patterns with lines and shapes to fill some of the areas.

