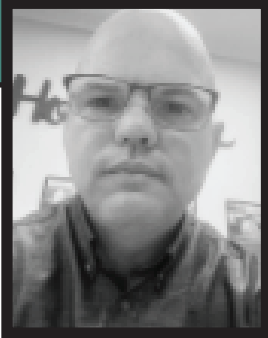


College Board Members

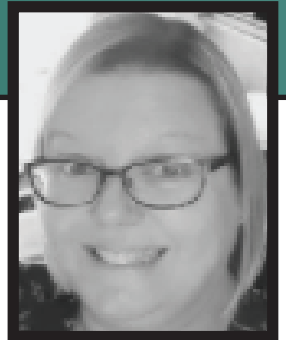


Jason Miller

Jason is the current SMCC Board Chair. He is a St Mary's parent and is an electrician by trade, presently working with sales and purchasing in the hydraulic retail industry. Jason generously volunteers much of his time to community ventures including the Cairns Hawks Juniors AFL Club, Auskick and Under 8s. Jason's incentive to become a Board member was the opportunity to be involved in the planning of the school and to meet other people in the school community. He enjoys being a positive role model to his children and sharing knowledge with the school community.

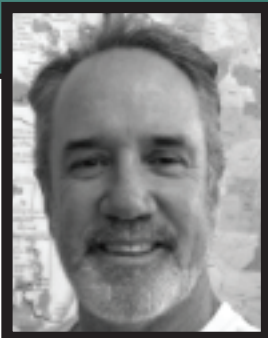
Tracy Gardiner

Tracy, a registered nurse and university lecturer in the School of Nursing and Midwifery at James Cook University, is the current SMCC Board Vice Chair. She is a St Mary's parent who has taken the opportunity to give back to the school by way of service to the Board. Tracy is a community minded person who is involved with Backstreet Dance Productions. She looks forward to contributing to the future planning of the school by sharing knowledge and providing collaborative support to help guide the school through the constantly changing education environment.



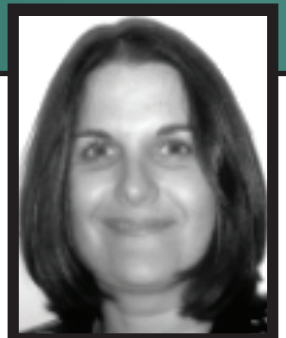
Brett Stallbaum

Brett is an SMCC parent and a Justice of the Peace. He became a Board member to contribute to planning the strategic direction of the school. Brett has previously given many years of service to the Royal Australian Air Force and the Queensland Police Service. Currently, as a long standing Manager for Queensland Parks and Wildlife Service and Partnerships, Brett is responsible for conservation management of the national parks in the Cape York area. Brett hopes his contributions to the school via the SMCC Board will help the school to remain relevant to the future of the students, their families and the general community.

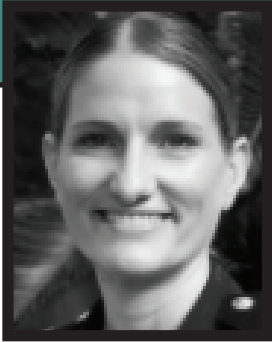


Tammy van der Reijden

As an SMCC parent, Tammy joined the Board to become more involved in her daughter's schooling. Tammy has an interesting career path that commenced in the legal profession and has included dive instruction, business administration, and professional interpretation and guiding in tourism at a State Government level. She is currently a finance team leader in the tourism industry and volunteers to Rosies Friends On The Street in her spare time. Tammy embraces the positivity of the SMCC culture and hopes to bring an everyday perspective to the Board to help the school continue its tradition as a welcoming and nurturing learning environment.



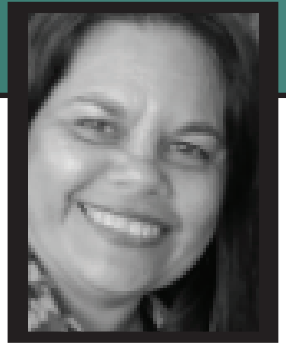
College Board Members



Cheryl-Lee Fitzgerald

Cheryl is an SMCC parent who has previously served on another Cairns Diocese school board as Chair. She has worked extensively in the public sector, including Local and State Government appointments and military service. She is currently the Executive Manager Emergency Management with Queensland Fire and Emergency Services for Local Government communities across the region and, in her spare time, Cheryl enjoys the beauty of discovering and trekking the walking trails of the Far North. Cheryl looks forward to contributing to a Board that will future proof the school through the current master planning and provide an environment that will empower all students to realise their full potential.

Nareeta Davis



Nareeta is an SMCC parent who has previously served on another school board in the Cairns Diocese. She provides pro-bono business advisory services, is a mentor and tutor with CQU and serves on several boards including the Mamu Health Service Limited Board. Nareeta is a qualified solicitor, senior accountant and Justice of the Peace. She enjoys attending SMCC Board meetings and sharing in a respectful approach to providing a safe, spiritual family environment for the students and staff to grow. Nareeta is an advocate for decisions that are made jointly with a sincere and kind vision.

Father Nathan



Fr Nathan McKay (Order of St Francis) is our Earlvile Parish Priest who has worked in a variety of areas prior to being ordained. His work experience includes roles in the hospitality industry and as a teacher in high schools. Fr Nathan is interested in Franciscan Spirituality and Ignatian Spirituality and has recently completed a Masters in Spiritual Direction through a Jesuit college in Melbourne. Fr Nathan generously provides service to the school community and creates vital opportunities to connect the Parish to the school. Along with other Board members, Fr Nathan enjoys contributing to group spirituality and working with like minded people who value education.

Hugh Bradridge



Hugh is a Board member in the role of the school's Business Manager; he also serves on another school board in the Cairns Diocese. Hugh has held senior roles in financial management in both the public and private sectors in Australia and overseas. He is a member of the Association of School Business Managers and coaches junior soccer in his own time. Hugh enjoys participating in Board meetings where he contributes useful and informed input for discussions, deliberations and decision making.

College Board Members

Margaret Neville



Margaret is the Principal's Personal Assistant and the Office Manager at SMCC and is a Board member as part of her work duties. She is a Justice of the Peace and a Member of Mensa International. Margaret has experience in administrative and management roles in State and Local Government as well as the private sector. She was educated in Australia and England and has been self-employed in primary production, finance, hospitality and tourism. Margaret embraces the opportunity to play a contributing role in the planning and process of education. She continues to engage positively in the Board's shared knowledge when addressing the ever changing requirements of the school community.

Wayne Wood



As the Principal of St Mary's, Wayne Wood is also a member of the SMCC Board, where he receives support from the other members who work collaboratively as a sounding board to provide mentoring and guidance in school matters. Wayne's teaching career advanced to the role of Principal several years ago and he has been Principal at St Mary's since 2017. Outside of school time, Wayne is an avid supporter and advocate of sport in the community. Wayne is grateful to be able to access the shared wisdom of the Board members and is appreciative of their willingness to support him in all school matters.