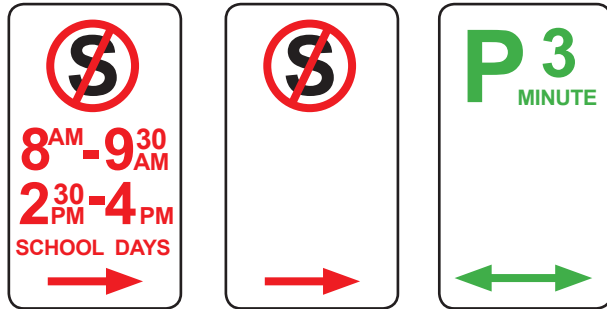
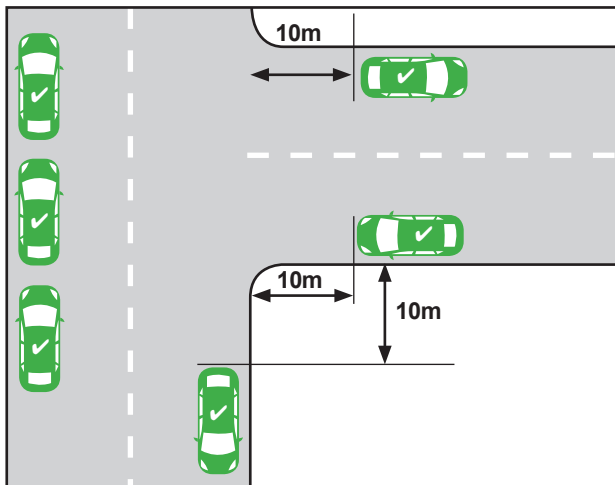


PARKING/STOPPING SIGNAGE



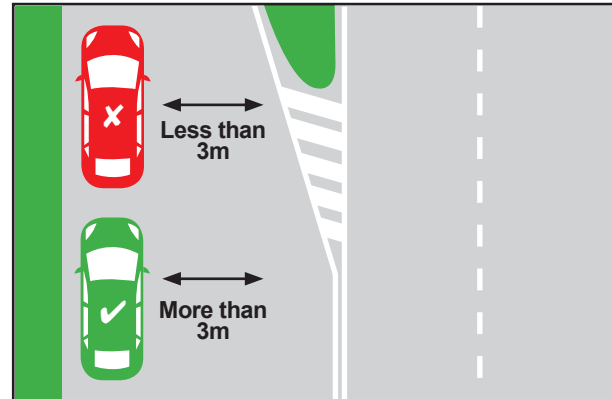
No Stopping area must be kept clear. If times/days are specified, restrictions are only applicable to the specified times. You cannot park in a P3min area for longer than 3 minutes.

WITHIN 10 METRES OF AN INTERSECTION



A driver must not stop with any part of their vehicle within 10 metres of an intersection unless signed otherwise.

3 METRE GAP FOR SAFETY



At least 3 metres must be left between your vehicle and the centre dividing line to allow other vehicles to pass safely and not obstruct traffic.

WHAT CAN YOU DO TO STAY SAFE

- Supervise your children in or near traffic
- Walk or cycle to school with your child
- Respect all road rules, parking signs and instructions from Authorities
- Wait on the same side of the street as your child
- Always let your child out of the kerb side of the car.

Free Telephone Interpreter Service

العربية	9679 9871	ਪੰਜਾਬੀ	9679 9879
Ελληνικά	9679 9873	தமிழ்	9679 9879
हिंदी	9679 9879	Türkçe	9679 9877
Italiano	9679 9874	Tiếng Việt	9679 9878
Македонски	9679 9875	Other	9679 9879
简体中文	9679 9857		



PARKING AND SAFETY AROUND SCHOOLS

Telephone: 9217 2170

Email: info@whittlesea.vic.gov.au

Web: whittlesea.vic.gov.au

SPEED



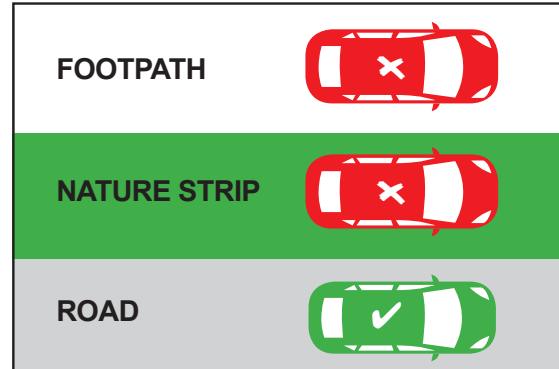
Look out for the reduced speed limit around schools and slow down to improve safety.

SCHOOL CROSSINGS



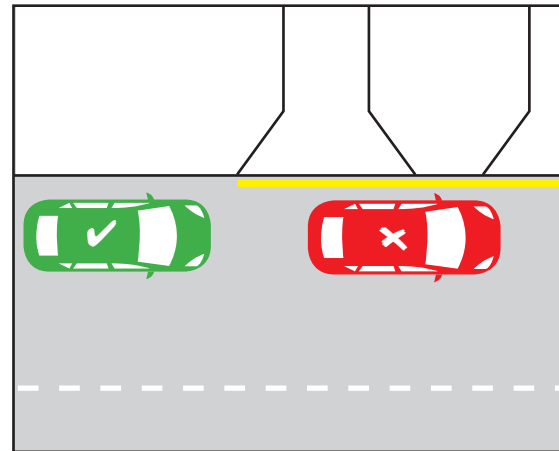
- Look out for flags and Crossing Supervisors.
- You must stop for anyone waiting to cross, or who has started crossing.
- Please remain stopped until the crossing is clear.

NO PARKING ON NATURE STRIPS/FOOTPATHS



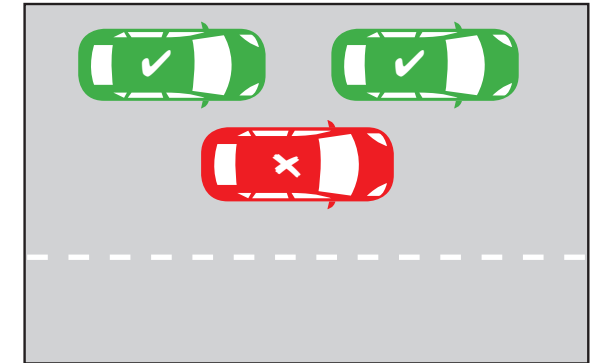
Parking is illegal on nature strips and footpaths.

YELLOW EDGE LINE



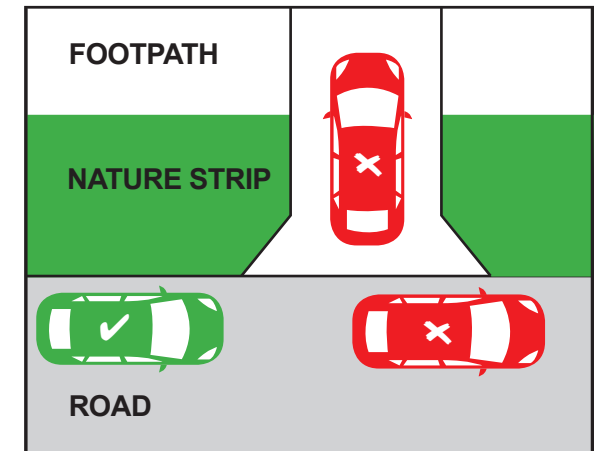
A driver must not stop on the side of a road marked with a yellow edge line.

DOUBLE PARKING



It is illegal to double park at any time. This affects the flow of traffic.

STOPPING ACROSS DRIVEWAYS



It is illegal to stop/park across a driveway unless you stay in the car and are there for no more than 2 mins and move immediately if required to do so to allow entry or exit by the owner/occupier.