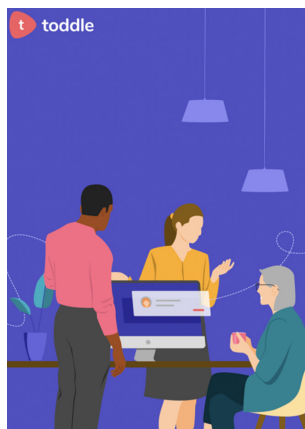


QUICK GUIDE TODDLE FAMILY LOG IN



1. Open a web browser on your computer and go to: <https://web.toddleapp.com>
2. Click on "Family account".



Welcome to Toddle!

Choose an account type to proceed

Teacher account
I'm an educator/school admin/IT specialist →

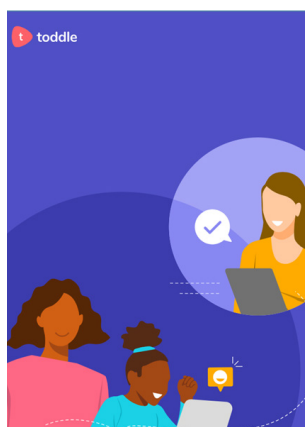
Student account
I'm a student →

Family account
I'm a family member →

School workspace → Here as a visitor? [Sign in here](#)

3. Select email and enter the email you have previously provided to the school or to log into PAM.
6. A OTP (One Time Pin) will be sent to your email to enter into Toddle.
7. Once completed you will be directed to the Toddle dashboard, where you will have access to the same key features as the mobile app.
8. The Toddle Web Page is straightforward to use, and the following link will be helpful if you want to learn more about all its features:

<https://help.toddleapp.com/en/articles/9561619-how-to-navigate-toddle-on-the-web-as-a-family-member>



Toddle home

Family account

Sign in with

→

or

Don't have an account? [Create new](#)

Notes for Parents/Guardians

- If you receive no email with the OTP or verification code, check your spam/junk folder.
- If you have any problems logging in, please email Tim Cameron the School's Toddle coordinator – tcameron@hamiltoncollege.vic.edu.au



THE
HAMILTON
AND ALEXANDRA COLLEGE



Toddleweb