



# Borinya Career News

December 2024

*"Believe in love. Believe in magic. Hell, believe in Santa Claus. Believe in others. Believe in yourself. Believe in your dreams.*

*If you don't, who will?" - Jon Bon Jovi*

## UPCOMING EVENTS

- Year 11 & 12 students finished for 2024
- 25/11-5/12/24 - Year 10 Headstart
- 4/12/24 - GOTAFE Orientation session
- 4/12/24 - Salon Assistant Headstart session
- 12/12/24 - Last day of 2024 & Standtall

*Merry Christmas and  
Happy New Year!*



RESILIENT



INCLUSIVE



COURAGEOUS



CURIOS

# Term 4 Borinya School Value – **curious**

## Dictionary

Definitions from [Oxford Languages](#) · [Learn more](#)



**curious**

/ˈkjʊəriəs/

*adjective*

1. eager to know or learn something.  
"I began to be curious about the whereabouts of the bride and groom"
2. strange; unusual.  
"a curious sensation overwhelmed her"

Similar:

strange

odd

peculiar

funny

unusual

bizarre

weird



Synonyms or  
other words  
for **CURIOUS**

## Similar and opposite words

From [Oxford Languages](#)

*adjective*

strange

odd

peculiar

funny

unusual

bizarre

weird

eccentric

queer

unexpected

unfamiliar

abnormal

out of the ordinary

atypical



RESILIENT



INCLUSIVE



COURAGEOUS

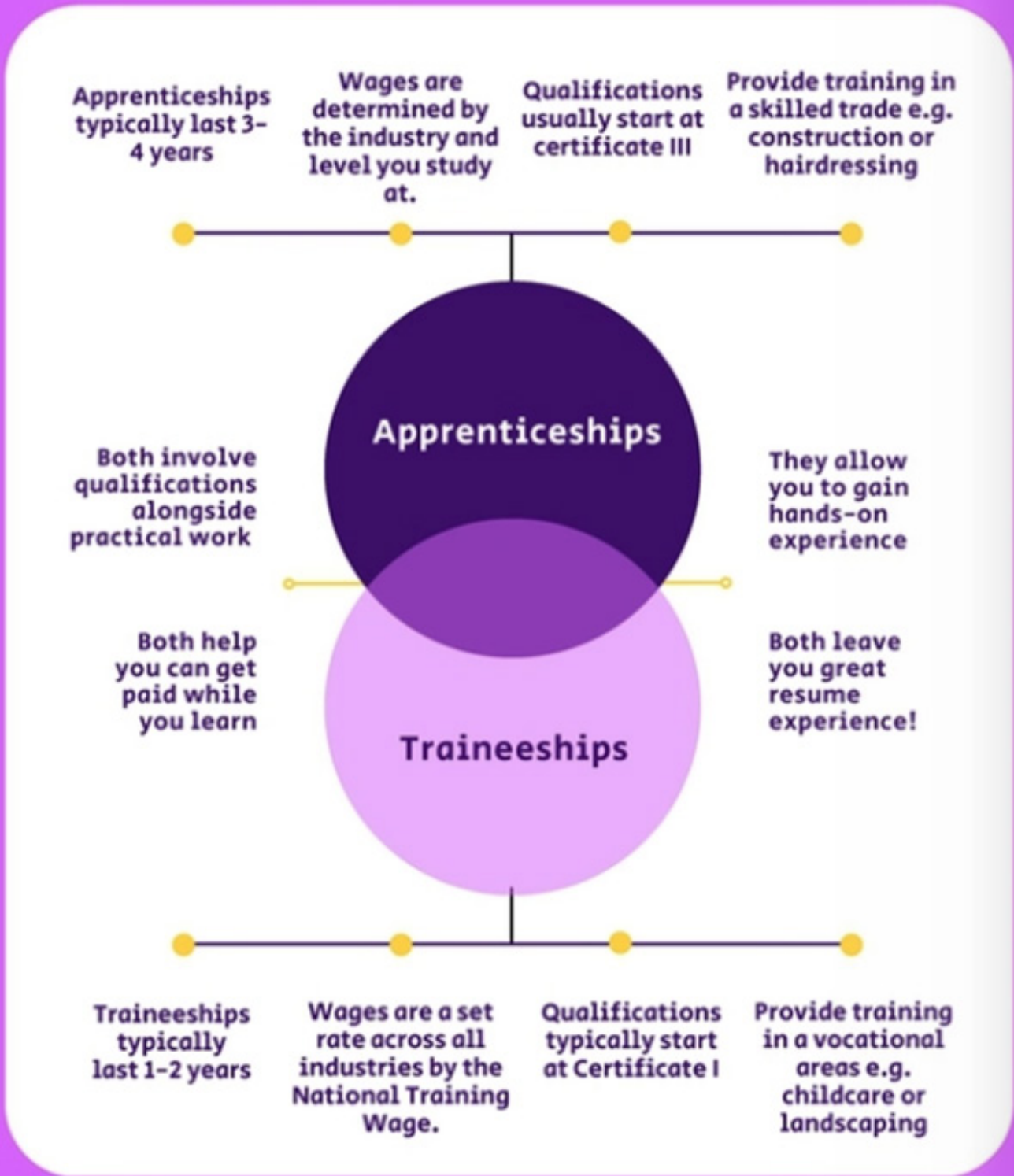


CURIOUS

# Apprenticeships vs Traineeships

## WHAT'S THE DIFFERENCE?

Apprenticeships and Traineeships share many similarities, and they do essentially offer the same thing! Their main difference is the level of funding you can receive, which will vary depending on state or territory and the level of qualification you choose.



RESILIENT



INCLUSIVE



COURAGEOUS



CURIOS

# How to READ a job ad!

A local Airconditioning & Refrigeration company are looking for a 1<sup>st</sup> Year Mechanical Service Plumber.

Have a look at the job advertisement from the Wangaratta Chronicle and see what type of young person they are looking for!

**ARE YOU INTERESTED IN APPLYING?**

An **APPRENTICESHIP** is a learning & employment pathway that combines paid on-the-job training and study with a TAFE, and at the end of 4 years you gain a nationally recognised qualification.  
*Earn while you learn!*

**RELIABLE** – able to be trusted!  
**PUNCTUAL** – arrive somewhere at the right time and are not late!  
**WORK ETHIC** – involves qualities such as diligence, discipline, responsibility, and reliability.  
**LEARN** - acquire new skills or knowledge or to build on existing

**COVER LETTER:** a letter that introduces your application and reasons for applying for the job, linking the relevant skills and experience on your resume to the job requirements and organisation.  
**RESUME:** a document that lists your work experience, education, skills and achievements. You'll need a resume for almost any job application; this allows the employer to consider whether you are suitable for a role, and if they want to invite you to a job interview.

**EMPLOYMENT**

**Lincoln**  
AIRCONDITIONING & REFRIGERATION

We are seeking applicants for the following **Full-Time Mechanical Service Plumber** positions:

**1<sup>st</sup> Year Apprentice**

- White card is preferred
- Excellent time management and communication skills and work well as part of a team
- Must be reliable, punctual and motivated with a strong work ethic and a willingness to learn
- Must be physically fit

Post your resume\* and handwritten cover letter to  
38 Woodland Grove, Waldara VIC 3678  
\*must include one professional referee

**2<sup>nd</sup> or 3<sup>rd</sup> Year Apprentice Fully Qualified Plumber**

- White card is essential
- Current drivers licence, time management and communication skills
- Must be reliable, punctual and motivated with a strong work ethic and a professional attitude
- Must be physically fit

Email your resume\* and cover letter to [mark@lincolnheatandair.com.au](mailto:mark@lincolnheatandair.com.au)  
\*must include two professional referees

**Application closing date February 9, 2024**

A **WHITE CARD** is a mandatory requirement for all workers on building sites. From doing a course, you learn the basic principles of OH&S White Cards are issued by WorkSafe Victoria.

Why **PHYSICALLY FIT**.....because you must be able to perform tasks in extreme temperature environments, in confined spaces, carry large and heavy equipment & materials and use a range of hand and power tools.

**REFEREE?**  
Is someone you'll put on your resume who can vouch for your skills, the kind of person you are, and highlighting traits such as punctuality, strong work ethic, communication, honesty, and persistence.

**\*HINT: BECOME FAMILIAR WITH JOB ADVERTISEMENTS TO FIND OUT WHAT EMPLOYERS ARE LOOKING FOR; ALLOWS YOU TO PREPARE, DEVELOP, PRACTICE, LEARN AND RESEARCH TO BE THE EMPLOYEE THAT THEY ARE SEARCHING FOR!** 31/1/24



RESILIENT



INCLUSIVE



COURAGEOUS



CURIOS

**Working out what you want to do and how you can make it happen can be a real challenge, especially if you're doubting yourself. But sharing this process with others can help you to work out a way forward.**

# **3 QUESTIONS TO ASK FAMILY AND FRIENDS TO HELP YOU IDENTIFY YOUR STRENGTHS, PASSION AND SKILLS**

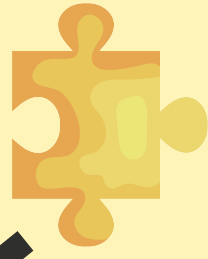
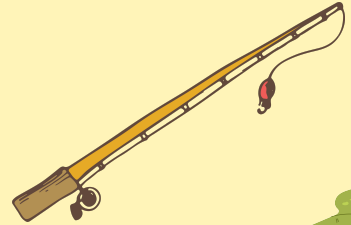
1. *What do I do well?*
2. *When do you see me at my best?*
3. *When do you think I'm most energised?*

These conversation starters help explore who you are from a strengths-based perspective. They're designed to focus on behaviours, traits, skills, and attitudes instead of job titles or industry-specific roles.

## **What next?**

It's one thing to ask the questions but another to act on the feedback given to you, listen with an open mind, and take time to absorb what has been said. Consider how these strengths can be applied to your job hunt or career pathway goals.

1. Use your **family and friends** as a sounding board to talk about your ideas because they have a good understanding of what you're passionate about and may help you unlock options you hadn't considered.
2. Your **family and friends** are your most invested network and may be more connected than you realise. You can ask them to reach out to their network for you. Who knows, it could lead to a life-changing introduction, or at the very least a conversation with someone that has done it all before.
3. Your **family and friends** will be there to talk out any fears you may have about money, time, or stability. They're also likely to keep you motivated through the highs and lows.



# WHAT ARE YOU DOING ON THE SCHOOL HOLIDAYS?

Read a book

Do WORDLE every day

Camp out in your back yard

Do a BIG jigsaw puzzle

Go fishing

Go bike riding

Cook a meal for the family

Walk the Warby

Visit the library

Open a bank account

Make biscuits to share

Go swimming with friends

Mow your neighbours lawn

Train trip to Chiltern

Apply for a TFN

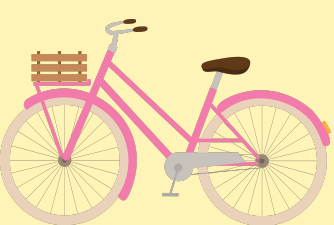
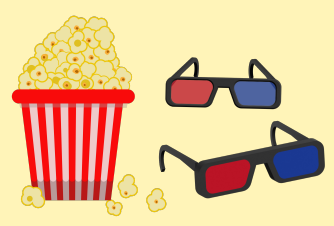
Try goldpanning

Explore a cemetery

Get a part time job

Rearrange your bedroom

Go to the movies



RESILIENT

INCLUSIVE

COURAGEOUS

CURIOS

# SETTING A GOAL...

First consider what you want to achieve, and then commit to it. Set **SMART** (specific, measureable, attainable, relevant and time-bound) goals that motivate you and write them down to make them feel tangible. Then plan the steps you must take to realize your goal, and cross off each one as you work through them.

**Goal setting** is a powerful process for thinking about your ideal future, and for motivating yourself to turn your vision of this future into reality.

The process of setting goals helps you choose where you want to go in life. By knowing precisely what you want to **achieve**, you know where you have to concentrate your efforts. You'll also quickly spot the distractions that can, so easily, lead you astray.



RESILIENT



INCLUSIVE



COURAGEOUS



CURIOS