

22 April 2025

Dear Resident/Owner

NOTIFICATION OF UPCOMING WORKS FOR GV LINK ENTERPRISE PARK STAGE 1

The Greater Shepparton City Council is excited to advise that construction will commence shortly on the **GV Link Enterprise Park Project – Stage 1** development, a vital initiative designed to enhance regional connectivity and drive economic growth. As an immediate neighbour to the project site on Simson/Toolamba Road, we want to inform you about the planned works and stages of this project.

Works on Stage 1 of GV Link Enterprise Park, at 250 Toolamba Road, Mooroopna, will commence on **Tuesday 22 April 2025**,

Overview of GV Link Enterprise Park

In Greater Shepparton, there is currently a shortage of large parcels of land for industry, logistics and manufacturing which have transport connections to major international and interstate freight gateways. The creation of new industrial land will facilitate the expansion and growth of existing businesses and the large sites will accommodate investment from local, national and international investors

Stage 1 of the project focuses on key infrastructure improvements to prepare the site for future operations.

Upcoming works and construction phases

Stage 1 is divided into three construction phases, with the three phases to be delivered between April and December 2025:

- 1. Development of a 4 lot industrial estate subdivision (40 hectares) and associated civil works – April to December 2025**
 - Construction work to begin within the subdivision.
 - Development of 4 serviced industrial lots, including site clearing and earthworks.
 - Construction of internal roads, drainage infrastructure, and catchment basins.
 - Installation of fencing and landscaping.
 - Geotechnical work and service proving to take place on Toolamba Road and other roads within Mooroopna (Alexandra Street, Ann Street, Morrell Street and O'Brien Street)

Legend:

- GV Link Stage 1
- GV Link Future Stages

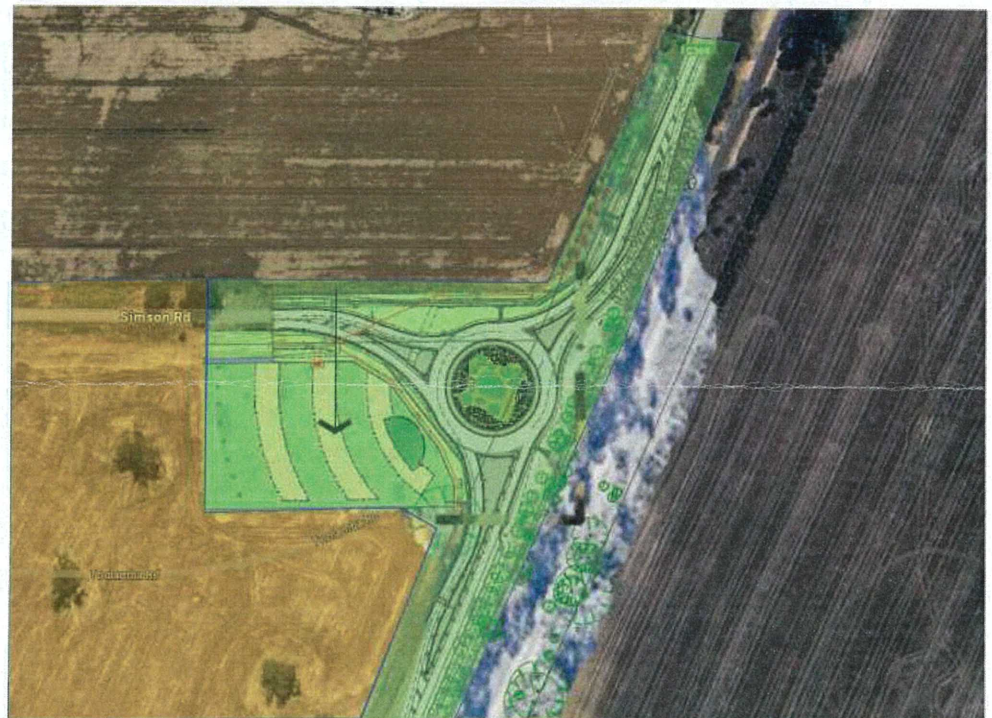


2. Construction of a Roundabout at Toolamba/Simson Road intersection – May to September 2025

- Roundabout construction to be undertaken at the intersection of Toolamba and Simson Roads.
 - Construction of a B-Double-rated single-lane, 80 km/h roundabout at the Toolamba Road and Simson Road intersection.
 - Upgrades and extension of Simson Road to facilitate High Productivity Freight Vehicle (HPFV) movements and enhance access.
 - These works will provide the GV Link Enterprise park site with key access and gateway enhancement.

Legend:

- GV Link Stage 1
- GV Link Access Enhancement

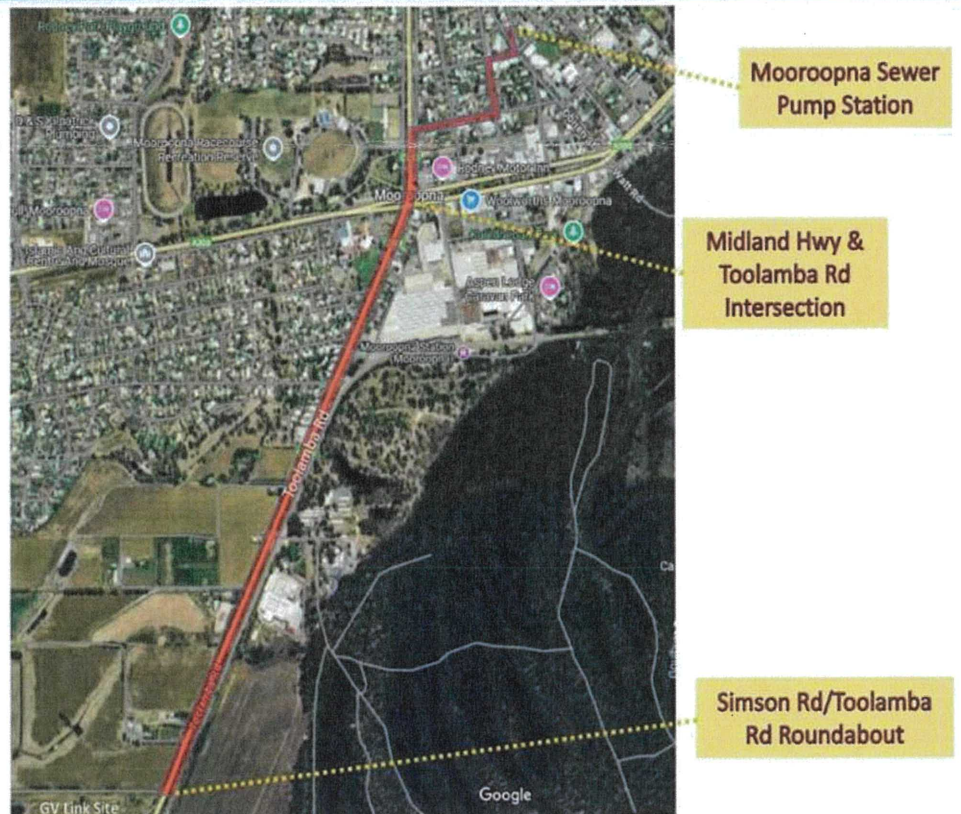


3. Service connections to the site – May to December 2025

- Installation of core services, including water, sewer, gas, power, public lighting, and communications, to Simson Road.
- Works will impact Toolamba Road, Midland Highway/McLennan Street, and other local roads within Mooroopna (Echuca Service Road, Alexandra Street, Ann Street, Morrell Street and O'Brien Street) in order to connect the sewer to the Sewer Pump Station on Ann Street.



GV Link Services Corridor



Further updates and communications

We are committed to minimising disruptions to residents and will provide further updates as the project progresses, via electronic newsletters, social media and project website page and radio advertisements.

Should you have any questions or require further clarification, please feel free to contact:

Project Manager: Yahya Ali

Phone: (03) 5832 9700

Email: projects@shepparton.vic.gov.au

Website: <https://greatershepparton.com.au/>

To be kept informed of the GV Link Enterprise Park project, register for e-newsletter updates: <https://greaterShepparton.com.au/gv-link>

We appreciate your cooperation and understanding as we work to deliver this important project.

Yours sincerely

A handwritten signature in dark ink, appearing to read 'Kelli Halden', with a stylized flourish at the end.

Kelli Halden
PROJECTS DELIVERY - MANAGER

CM: C25/10716