



**studyworkgrow**

LINKING LEARNING WITH LIFE

## ENTRY TO MEDICINE GUIDE

[ TWO THOUSAND AND TWENTY-THREE ]

[studyworkgrow.com.au](https://studyworkgrow.com.au)

# **entry to medicine guide**

A guide to medical programs in Australia for high school students. Created by Study Work Grow Pty Ltd in 2022.

## **VERSION 1**

The programs in this guide may be subject to change at any time. In our experience, programs may change at short notice, and you should always check directly with the provider before applying. We have verified the information in this guide, but in some cases the information may differ from that provided on third party websites or printed material.



## in this guide...

what you need to know  
common terms and abbreviations  
your study options  
how it works (2 Ways)  
the assessment process  
the UCAT  
creating a plan b  
understanding fees and places  
key dates  
direct entry programs  
separate entry programs  
postgraduate programs  
undergraduate programs

## what you need to know about studying medicine

### MEDICINE IS COMPETITIVE

But that doesn't make it unachievable.

We need doctors, even more so than just a few years ago, and if you've done the work and prepared then you'll put yourself in with a good chance.

Keep an eye out for alternative entry options and programs with lower ATAR requirements.

### YOUR DEGREE IS JUST THE FIRST STEP

Graduating from a medical program that allows you to qualify as an intern is great, but you'll still need to undergo years of training before they let you practice on real patients without supervision.

Medical School is followed by an Internship (usually one year), then a Residency of one or more years.

After that you'll be a Registrar, then after even more training, experience and exams you could do your Fellowship and/or PhD, and only then will you become a qualified GP, Physician, Surgeon or Specialist.

### PREPARING YOUR APPLICATION CAN TAKE TIME

If you're in Year 12 then you need to get your preparation underway fast.

If you're in Year 10 or 11, then start thinking about it now so there's not as much to prepare in Year 12.

You can expect to undergo testing, interviews, submit essays and more, on top of the normal university application process.

### THERE CAN BE SIGNIFICANT COSTS

Your degree will take 5, 6 or 7 years to complete, and can be quite expensive. However, there are lots of scholarships available that can help ease the financial burden.

Many programs offer Commonwealth Supported Places, but some don't, and those programs could set you back \$250,000 or more in fees - that's before you pay for accommodation, textbooks, or coffee.

## common terms and abbreviations

**MBBS** - Bachelor of Medicine, Bachelor of Surgery. This is the title of the primary degree conferred upon graduates of many medical programs in Australia. You can get an internship once you graduate with this degree.

**MD** - Doctor of Medicine - the name of the equivalent postgraduate qualification to the MBBS.

**MChD** - Doctor of Medicine and Surgery - as above.

These three terms are interchangeable, and have no impact on your ability to gain an internship.

**UCAT ANZ** - The University Clinical Aptitude Test (UCAT) is an admissions test used by the UCAT ANZ Consortium of universities in Australia and New Zealand for their medical, dental and clinical science degree programmes.

**MMI** - Multiple Mini Interview - a type of assessment format where you face multiple interview stations and answer a range of different questions.

**Casper** - Computer Based Assessment for Sampling Personal Characteristics. Used in the application process for some medical programs.

**GAMSAT** - Graduate Australian Medical School Admissions Test. The graduate version of the UCAT.

**GEMSAS** - Graduate Entry Medical School Admission System. Most postgraduate programs require you to apply through GEMSAS.

**ATAR** - Your Australian Tertiary Admission Rank is a number between 0.00 and 99.95 that indicates your position relative to all the students in your cohort.

**SR** - Selection Rank (or Rank) is your ATAR after it has been adjusted with any bonus points you are eligible for. You could be entitled to adjustment points because of your circumstances, indigenous heritage, location or other factor.



## your study options

The Australian Medical Association (AMA) state that:

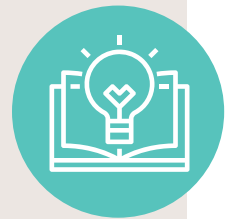
“All medical degrees offered by medical schools in Australia are equivalent for the purposes of commencing practice as a doctor.”

This means that it doesn't matter which school you graduate from, or whether you graduate with the standard MBBS (Bachelor of Medicine, Bachelor of Surgery) or a Doctor of Medicine (MD or MChD), you will be qualified to start your internship.

### your first option...

is to commence one of the 5 or 6 year undergraduate entry degrees once you finish school. We found 18 programs in Australia that offer this direct option.

If you don't make it into one of these programs (and, remember, there are limited places) you can still become a doctor.



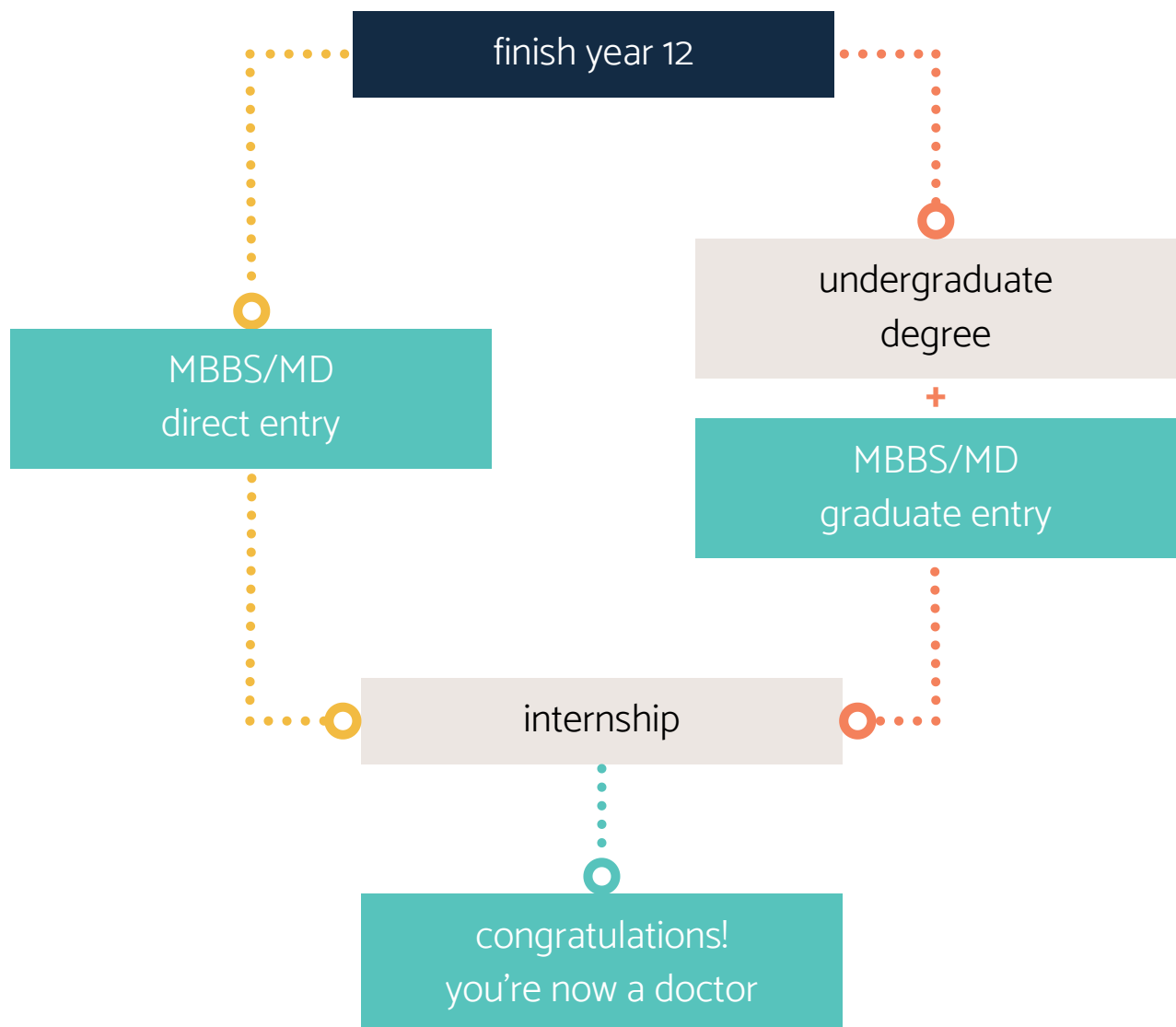
### the second pathway...

is to complete another undergraduate degree, usually but not always in a health science field, then meet the requirements for admission into a postgraduate medical program. You'll most likely need to sit the GAMSAT instead of the UCAT, and many programs have strict prerequisites and performance standards.

The other side benefit of this pathway is that the range of careers in health and medicine is huge, and you may find something else you prefer along the way.



## how it works (2 ways)



## the assessment process

The assessment process is different for undergraduate (school-leaver) programs and graduate programs, and we focus on undergraduate programs in this guide.

This just means that if you apply for a graduate program down the track you'll need to check out the process for each university separately.

There are different components used by each university, and each of these has a different weighting in their individual assessment process.

Understanding the assessment process is vital for success, so once you've chosen some potential programs do your research and learn about each component they use and what you need to do.

Some of the programs require you to apply directly to the university as well as or instead of applying through your state's Tertiary Admissions Centre, and there are a range of deadlines.

This means they have your information and can start the process before getting your ATAR/SR in December. Other programs wait for your ATAR/SR and then invite applicants for interviews in December and January.

Be aware that the deadlines may be different for Medicine, and you may not be able to apply or change your preferences after the on-time application deadline.

### All direct-entry programs require an ATAR or Selection Rank

Generally, there is a minimum cut-off ATAR/SR - however the lowest score that gets in may be higher.

For example, they may state the minimum ATAR is 95, but the lowest score to get an offer may actually be 97.5, depending on the quality of the applicants and other factors.

### 12 of the programs require a UCAT score

You need to register to sit the UCAT in the year before you want to start your degree.

UCAT offer a range of free practice tests and resources that can help you prepare, without needing to pay for external programs. They also have a Preparation Plan you can follow.

### 11 of the programs ask you to attend an interview process

Usually these interviews are in the form of a Multiple Mini Interview, but the actual structure and questions vary from uni to uni.

You may need to also participate in group activities, individual formal interviews, and additional testing.



## the UCAT

Some of the programs require you to sit the University Clinical Aptitude Test (or UCAT) before you can apply. So what exactly is the UCAT?

Basically, it's a test that determines whether or not you have the right abilities and behaviours to work as a doctor. It's usually used in combination with your academic results and other testing methods (such as interviews) as part of your admissions profile.

The test runs for two hours and is computer-based. There are five separate sections to the UCAT:

1. Verbal Reasoning
2. Decision Making
3. Quantitative Reasoning
4. Abstract Reasoning
5. Situational Judgement

Make sure you read the entry requirements for any course you're interested in to see if you'll need to sit the UCAT, as it is usually run before admissions close.

### UCAT 2022 Key Dates

- 1 March - Bookings open
- 10 May - Concession application deadline
- 17 May - Booking deadline
- 31 May - Late booking deadline
- 3 June - Cancellation deadline
- 1 July - Testing begins
- 12 August - Last testing date
- Late September - Results delivered



**find out more here >>**

## creating a plan b

You're probably not going to want to hear this, but every year students with brilliant ATARs, UCAT scores and application essays miss out on getting into medicine.

Some of the programs have thousands of applicants for literally a classroom's worth of spots. Take the University of Sydney for example - they get thousands of applicants each year for 30 spots. You can do everything right, and still not get in. Which is why you need a Plan B.

Your Plan B will most likely be an **alternative path to medicine**, such as through a graduate program.

In this guide we've outlined the possible alternative pathways for each Medical Program, and suggested alternative courses that could help you one day transfer into Medicine. But we also recommend that your Plan B includes career options other than 'doctor', should you not eventually get into medicine.

Luckily, many graduate Medical Programs (i.e. ones you can only get into once you already have a degree) don't put limits on the type of degree you can have.

This means that you can apply with a Bachelor of Medical Science, Nursing, Physiotherapy, Accounting, or IT.

Many students who don't get in choose a Bachelor of Medical Science, but these courses are often filled with highly talented students who also just missed out on medicine. This could make it harder to get a good GPA, and there are often limited career prospects for graduates should you not eventually get into a Graduate Medical Program.

So, a suggestion could be to consider something other than Medical Science for your undergraduate degree if there's something else you're interested in.

That way, you'll have a solid backup career option with good job prospects, just in case you don't get into medicine.

In 2022, the UNSW Bachelor of Medical Studies/Doctor of Medicine was the most popular course in the state...

## understanding fees and places

There are three types of places for domestic (i.e. not international) medical students in Australia; Commonwealth Supported Places (CSPs), Bonded Places (BPs), and Full Fee-Paying Places (FFPs).

Public Universities are not able to offer FFPs for domestic undergraduate students, so this means that as a domestic undergraduate student you won't be able to access a FFP unless you graduate from another degree then start a post-graduate medical program.

It's also worth considering that the Australian Government has guaranteed an internship place for all graduates with a CSP or Bonded Place, so this means if you graduate from one of these programs you'll definitely get an internship.



### commonwealth supported places

These are places where the Government pays part of your fees. It won't cover all of the fees, but it will cover a lot of them and you don't have to pay it back. You could also get a loan to cover the remaining fees (called a HECS-HELP loan).

To get one of these places you need to be eligible, which means you need to be an Australian citizen. Some people from New Zealand or on Permanent Visas can also be eligible depending on other criteria.

On average, a student on a CSP could expect to pay around \$11,000 per year, but this is variable and you **NEED** to check with your university before you commit to anything.



### bonded places

28.5% of all CSPs are now required to also be Bonded places. This initiative of the Government is designed to combat workforce shortages in rural and regional areas.

Bonded places come with the same degree entry criteria as other CSPs, and you do not receive any additional financial assistance (other than the usual fee reduction you get from your CSP) or scholarships.

If you agree to the Bonded Place, you will need to work in a regional, rural or remote location for a period of 3 years within 18 years of finishing your degree.

If you are offered a Bonded Place then we strongly suggest you do your homework before you agree.

## understanding fees and places



### full fee paying places

In some circumstances, you may be offered a full-fee paying place.

Some of the medical programs offered by Private Universities or classified as postgraduate degrees (such as Macquarie's Doctor of Medicine) make some or all places full-fee paying.

If you are offered a full-fee paying place you might need to have the money up front, and it'll cost you around \$60,000 on average for each year of your degree. Check with your chosen university for their individual fee program.



### HECS and FEE-HELP

HECS-HELP and FEE-HELP are loan schemes from the government that you can use to pay for your university fees.

HECS-HELP covers the remaining balance on a Commonwealth Supported Place, while FEE-HELP covers eligible full-fee paying courses. If you plan to study medicine, dentistry, veterinary science or some aviation courses, the HELP limit is (at the time of writing) \$155,448. If you repay it, or even a portion of it, you can re-borrow back up the the full HELP limit again if you need to. One thing to consider is that if you want to study a course like the one from Macquarie which costs over \$250,000, you'll need to be able to fund the difference.

## tentative closing dates

The majority of school-leaver programs close on the same day as general state-based university applications (i.e. through UAC, or VTAC etc.). This is normally around the end of September. As most of the programs have not finalised their application processes yet, we have included the tentative application dates we have, or the dates from 2021.

Programs with direct application options may have dates which open earlier and close later, but as the universities may change these dates at their discretion we recommend checking directly with the university when you go to apply.

If you need to sit the UCAT, the booking deadline is 17 May 2022 (late bookings open until 31 May at a higher cost).

UCAT - 2022  
Closes 17 May 2022

Australian National University - 2022  
Min ATAR - 95  
Closes - 10 April

University of New South Wales - 2021 Data  
Min ATAR - 97  
Closed - end of September

University of Newcastle & University of New  
England  
Min ATAR - 94.3  
Closes - 30 September

University of Sydney - 2021 Data  
Min ATAR - 99.95  
Closed - end of September

Western Sydney University & Charles Sturt  
University - 2021 Data  
Min ATAR - 95.50  
Closed - end of September

Monash University - 2021 Data  
Min ATAR - 91  
Closed - end of September

CQUniversity & University of Queensland -  
2021 Data  
Min ATAR - 95  
Closed - end of September

James Cook University - 2021 Data  
Min ATAR - 87.85  
Closed - end of September

## tentative closing dates continued

University of Queensland - 2021 Data

Min ATAR - 95

Closed - end of September

Charles Darwin University - 2021 Data

Min ATAR - 90

Closed - start of December

University of Adelaide - 2021 Data

Min ATAR - 90

Closed - end of September

Griffith University - 2021 Data

Min ATAR - 99.85

Closed - end of December

Curtin University - 2021 Data

Min ATAR - 95

Closed - end of September

Bond University - 2021 Data

Min ATAR - 96

Closed - end of January

University of Western Australia - 2021 Data

Min ATAR - 99

Closed - end of September

USC & Griffith University - 2021 Data

Min ATAR - 99.8

Closed - end of September

University of Tasmania - 2021 Data

Min ATAR - 95

Closed - end of September

La Trobe University & University of Melbourne

- 2021 Data

Min ATAR - 80

Closed - start of December

Flinders University - 2021 Data

Min ATAR - 95

Closed - start of December



## direct entry programs

new south wales

victoria

queensland

south australia

western australia

australian capital territory

northern territory

tasmania

for the latest details on each program, including key dates, check the link under each program

These programs are designed for school-leavers and give you the skills and knowledge you need to become an intern.

As long as you meet all of your degree requirements (ie. you don't fail) you'll graduate and be able to take up a position as an intern and become a doctor.



## university of new south wales

Bachelor of Medical Studies & Doctor of Medicine



**min ATAR**



**years**



**locations**

The Bachelor of Medical Studies and Doctor of Medicine at UNSW is the most popular first preference choice in the state for school leavers.

Apply directly to UNSW and through UAC, sit the UCAT in Year 12, and attend an interview if invited. In 2021, applications closed on 30 September.

**[for entry requirements, application details and key dates, go here](#)**

## university of newcastle & university of new england

Joint Medical Program



**min ATAR**



**years**



**locations**

The Joint Medical Program is run jointly by the University of Newcastle and the University of New England, allowing you to access a world-class education in regional areas.

Apply directly to Newcastle/UNE and through UAC, sit the UCAT in Year 12, and attend a Multiple Skills Assessment and Personal Qualities Assessment if invited. Applications close on 30 September 2022.

**[for entry requirements, application details and key dates, go here](#)**

## university of sydney

Bachelor of Arts / Science & Doctor of Medicine



**min ATAR**



**years**



**locations**

The University of Sydney's double degree allows school leavers who have achieved exceptional results to commence a three-year undergraduate science or arts degree followed by the four-year Doctor of Medicine (MD).

Apply through UAC, and attend an interview if invited. In 2021, applications closed on 30 September.

**[for entry requirements, application details and key dates, go here](#)**

## western sydney university & charles sturt university

Joint Program in Medicine



**min ATAR**



**years**



**locations**

Western Sydney and Charles Sturt's Joint Program in Medicine allows you to complete your medical training straight out of high school, either in Western Sydney or Orange.

Apply through UAC, sit the UCAT in Year 12, and complete an interview and Medical Admission Questionnaire if invited. In 2021, applications closed on 30 September.

**[for entry requirements, application details and key dates, go here](#)**

## la trobe university & university of melbourne

Bachelor of Biomedical Science (Medicine) & Doctor of Medicine



**min ATAR**



**years**



**locations**

La Trobe University's Bachelor of Biomedical Science (Medicine) provides a guaranteed pathway into the University of Melbourne's Doctor of Medicine.

Apply through VTAC, and attend an interview if invited. Finish the undergraduate degree with a WAM of 70 to progress into the MD. In 2021, applications closed on 3 December.

**[for entry requirements, application details and key dates, go here](#)**

---

## monash university

Bachelor of Medical Science and Doctor of Medicine



**min ATAR**



**years**



**locations**

Monash's Bachelor of Medical Science and Doctor of Medicine provides direct entry from high school. The first two years are campus based and the final three years are hospital and community based.

Apply through VTAC, sit the UCAT in Year 12, and complete an interview if invited. In 2021, applications closed on 30 September.

**[for entry requirements, application details and key dates, go here](#)**

---

## bond university

The Medical Program



**min ATAR**



**years**



**locations**

Due to Bond's tri-semester structure, graduating students will have the advantage of entering the workforce as a Doctor in only 14 semesters.

Apply through QTAC, and attend psychometric testing and an interview if invited. For the 2022 intake, applications opened on 13 January and closed on 27 January 2022.

**[for entry requirements, application details and key dates, go here](#)**

---

## cquniversity & university of queensland

Bachelor of Medical Science (Pathway to Medicine) and Doctor of Medicine



**min ATAR**



**years**



**locations**

Designed for school leavers, CQUniversity's Bachelor of Medical Science (Pathway to Medicine) provides a provisional entry pathway into the University of Queensland's regionally based Doctor of Medicine program.

Apply through QTAC, sit the UCAT in Year 12, and complete an interview if invited. In 2021, applications closed on 30 September.

**[for entry requirements, application details and key dates, go here](#)**

---

## griffith university

Bachelor of Medical Science and Doctor of Medicine



min ATAR



years



locations

Griffith's Bachelor of Medical Science, designed for high-achieving secondary school leavers, provides the opportunity for you to progress directly into the Doctor of Medicine.

Apply through QTAC. Completion of the Bachelor of Medical Science with a GPA of at least 5.0 will see graduates gain seamless entry into the Doctor of Medicine. In 2021, applications closed on 30 December.

**[for entry requirements, application details and key dates, go here](#)**

---

## james cook university

Bachelor of Medicine, Bachelor of Surgery



min ATAR



years



locations

JCU's Bachelor of Medicine, Bachelor of Surgery is the only six-year undergraduate medical course offered in Northern Australia.

Apply through QTAC and direct to JCU, and complete an interview if invited. In 2021, applications closed on 30 September.

**[for entry requirements, application details and key dates, go here](#)**

---

## university of queensland

Doctor of Medicine - Provisional Entry



**min ATAR**



**years**



**locations**

The University of Queensland provides Provisional Entry for school leavers to their Doctor of Medicine. This gives you the freedom to study the undergraduate course of your choice.

Apply through QTAC and sit the UCAT. Complete a bachelor degree at UQ within the minimum specified time with a GPA of 5.00 in order to progress to the MD. In 2021, applications closed on 30 September.

**[for entry requirements, application details and key dates, go here](#)**

---

## usc & griffith university

Bachelor of Medical Science and Doctor of Medicine



**min ATAR**



**years**



**locations**

USC's Bachelor of Medical Science provides provisional direct entry (subject to entry requirements) to Griffith University's Doctor of Medicine.

Apply through QTAC. Provisional entry to Griffith's Doctor of Medicine is dependent on a cumulative GPA of at least 5.00 and a minimum Pass grade in MED202. In 2021, applications closed on 27 December.

**[for entry requirements, application details and key dates, go here](#)**

---

## flinders university

Bachelor of Clinical Sciences, Doctor of Medicine



**min ATAR**



**years**



**locations**

Flinders' double degree program enables school leavers without an undergraduate degree to pursue a career in medicine.

Apply through SATAC and sit the UCAT in Year 12. This course is only available to school leavers. In 2021, applications closed on 1 December.

**[for entry requirements, application details and key dates, go here](#)**

## university of adelaide

Bachelor of Medical Studies and Doctor of Medicine



**min ATAR**



**years**



**locations**

Upon completion of the Bachelor of Medical Studies, you'll gain direct entry into the University of Adelaide's Doctor of Medicine.

Apply through SATAC and sit the UCAT in Year 12. In 2021, applications closed on 30 September.

**[for entry requirements, application details and key dates, go here](#)**



## curtin university

Bachelor of Medicine, Bachelor of Surgery



**min ATAR**



**years**



**locations**

Curtin University offers the only undergraduate entry medical degree program in Western Australia.

Apply through TISC, submit a predicted ATAR form, sit the UCAT in Year 12, and attend an interview if invited. In 2021, applications closed on 30 September.

**[for entry requirements, application details and key dates, go here](#)**

---

## university of western australia

Doctor of Medicine – Assured Pathway to Medicine



**min ATAR**



**years**



**locations**

The Assured Pathway to Medicine is available for high-achieving domestic school leavers.

Apply through TISC, sit the UCAT in Year 12, and attend an interview if invited. A place in the MD is conditional upon completion of a UWA bachelor's degree with a minimum GPA of 5.5. In 2021, applications closed on 30 September.

**[for entry requirements, application details and key dates, go here](#)**

---

## australian national university

Tuckwell Scholarship to Medicine Pathway



**min ATAR**



**years**



**locations**

Scholars in the Tuckwell-MChD pathway are not required to apply through GEMSAS, sit the GAMSAT or undertake an additional interview prior to entering the MChD program.

Complete an ANU Direct Application before 6 April 2022, and complete a Tuckwell Scholarship Stage 1 Application Form before 10 April 2022. Declare upfront an interest in studying medicine in all three stages of the Tuckwell application process. Completion of an undergraduate degree at the ANU is mandatory prior to commencing the MChD.

**[for entry requirements, application details and key dates, go here](#)**

---

## charles darwin university & flinders university

NT Medical Program



**min ATAR**



**years**



**locations**

The Bachelor of Clinical Sciences course is a direct pathway for CDU students to study medicine, on campus in Darwin. This course is part of a double degree with the Northern Territory Medical Program (NTMP) offered by Flinders University.

Apply through SATAC, and sit the UCAT in Year 12. In 2021, applications closed on 1 December.

**[for entry requirements, application details and key dates, go here](#)**

---

## university of tasmania

Bachelor of Medicine & Bachelor of Surgery



**min ATAR**



**years**



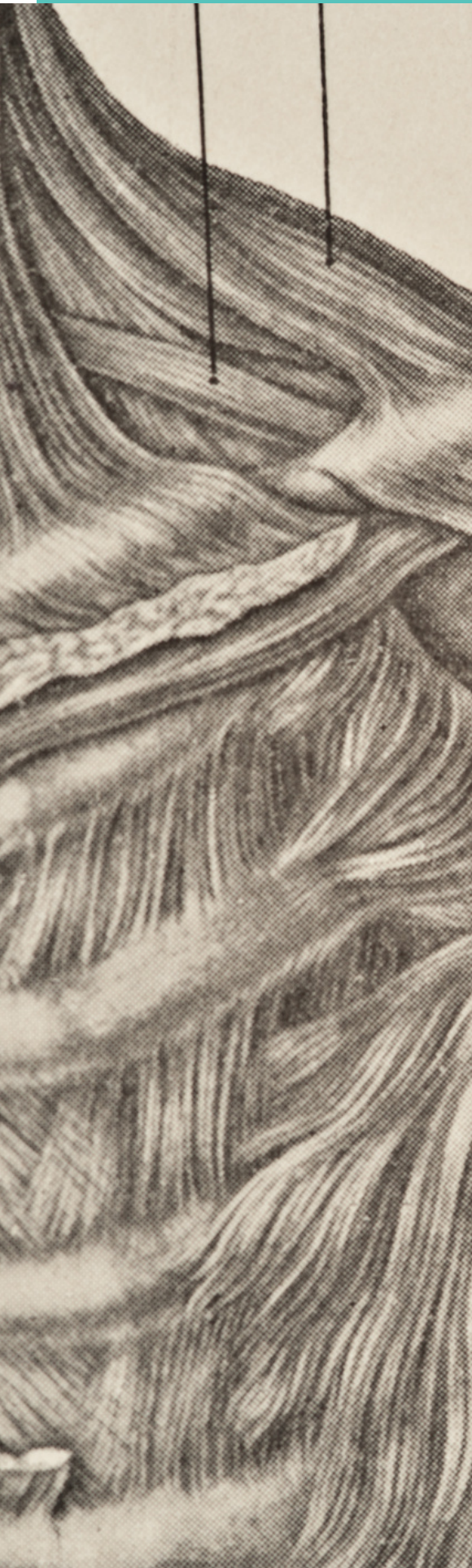
**locations**

The five year Bachelor of Medicine & Bachelor of Surgery will provide students with the knowledge, skills and attitudes required to undertake supervised practice as interns in Australia. It is the only medical program available to study in Tasmania.

Apply direct to UTAS, and sit the UCAT in Year 12. In 2021, applications closed on 30 September.

**[for entry requirements, application details and key dates, go here](#)**

---



## **separate undergrad & postgrad programs**

macquarie university

university of notre dame

university of wollongong

These programs give you a clear and direct pathway through to becoming a Doctor, but you will need to apply through a competitive selection process to complete the Graduate portion of the program.

You could receive benefits through this pathway that other graduate applicants won't receive, but entry is NOT guaranteed.

## macquarie university

Bachelor of Clinical Science & Doctor of Medicine



**min ATAR**



**years**



**locations**

This innovative and fast-tracked Bachelor of Clinical Science is designed to be the ideal preparation for the Macquarie MD and other graduate-entry medicine programs.

Apply through UAC. Upon completion of the Bachelor of Clinical Science, apply through GEMSAS to the Doctor of Medicine as a postgraduate student, and attend an interview if required.

**[for entry requirements, application details and key dates, go here](#)**

---

## university of notre dame

Pre-Medicine Certificate & Doctor of Medicine



**min ATAR**



**years**



**locations**

The Pre-Medicine Certificate is designed to prepare undergraduate students who wish to apply for the Doctor of Medicine. You study 4 subjects while also studying your undergraduate degree.

Completion of the Pre-Medicine Certificate won't guarantee entry to the MD, but if you meet the GPA and GAMSAT scores you'll progress automatically to the interview stage for the Doctor of Medicine.

**[for entry requirements, application details and key dates, go here](#)**

---

## university of wollongong

Bachelor of Pre-Medicine, Science and Health & Doctor of Medicine



**min ATAR**



**years**



**locations**

The Bachelor of Pre-Medicine, Science and Health is a three-year undergraduate degree providing a solid foundation towards graduate medicine. Please note there is no guaranteed direct entry into the MD.

Apply through UAC. Upon completion of the BPreMedSchHlth, apply through GEMSAS to the MD, sit the GAMSAT and Casper test, and attend an interview if invited. In 2021, applications closed on 30 September.

**[for entry requirements, application details and key dates, go here](#)**

---





## postgraduate programs

australian national university

griffith university

university of melbourne

university of notre dame

university of queensland

These universities have Medical Programs, but you must have a bachelors degree in order to apply. There are suggested paths you can take to increase your chances of gaining admission into the postgraduate qualification, but nothing is guaranteed.

These courses can be less competitive than undergraduate courses, meaning you could have a higher chance of getting in.

If you choose one of these pathways, ensure you continue to check the entry requirements for the graduate medical program throughout your first degree, just in case anything changes which could make you ineligible.



## australian national university

Doctor of Medicine and Surgery



**min GPA**



**years**



**locations**

The Doctor of Medicine and Surgery is a comprehensive and varied four year course for graduate students looking to enter the rewarding field of medicine.

Sit the GAMSAT and apply through GEMSAS. There are no preferred Bachelor degrees or prerequisite subjects for entry to the Doctor of Medicine and Surgery program.

**[for entry requirements, application details and key dates, go here](#)**

---

## griffith university

Doctor of Medicine



**min GPA**



**years**



**locations**

The Doctor of Medicine (MD) program at Griffith University is a graduate entry program. As such, all applicants must have completed an undergraduate degree before they are eligible to apply for entry.

Sit the GAMSAT and apply through GEMSAS. Be invited to attend a Griffith University Multi Station Admissions Assessment (GUMSAA). Applicants to the MD are encouraged from all degree backgrounds.

**[for entry requirements, application details and key dates, go here](#)**

---

## university of melbourne

Doctor of Medicine



**min GPA**



**years**



**locations**

Designed for students who have completed their undergraduate studies and are committed to professional training, this unique MD recognises both the personal and professional development of each individual.

Sit the GAMSAT, apply through GEMSAS, and attend an interview. You must complete prerequisite studies in anatomy, physiology and biochemistry consisting of at least one subject at second year level of each.

**[for entry requirements, application details and key dates, go here](#)**

---

## university of notre dame

Doctor of Medicine



**min GPA**



**years**



**locations**

The MD at Notre Dame is the only medical degree offered by a Catholic university in Australia.

Sit the GAMSAT, apply through GEMSAS and direct to Notre Dame, and attend an interview if invited. As a guide, students commencing the MD at Notre Dame in 2021 had an average GPA of 6.54 and an average GAMSAT score of 63.7.

**[for entry requirements, application details and key dates, go here](#)**

---

# university of queensland

Doctor of Medicine - Graduate Entry



**min GPA**



**years**



**locations**

The UQ Doctor of Medicine (MD) is an internationally renowned postgraduate-entry program.

Sit the GAMSAT, apply through GEMSAS, and attend an interview if invited. You must complete prerequisite tertiary level studies in cell biology and systems physiology.

**[for entry requirements, application details and key dates, go here](#)**

---

CONNECTING YOUNG PEOPLE  
WITH FUTURES THEY LOVE



**studyworkgrow**

**p.** + 61 7 4039 3862

**e.** [info@studyworkgrow.com.au](mailto:info@studyworkgrow.com.au)

Study Work Grow has exercised its best efforts and judgement in compiling the information in this Guide, however you acknowledge that: 1) it is provided for information and general advisory purposes only and does not constitute professional, legal or career advice; 2) it should not be relied upon or regarded as a comprehensive assessment or evaluation or recommendation of your skills, competencies or personality or your prospects of success in a particular vocation, field or industry; 3) we recommend you contact the relevant educational institution or professional or trade organisation before making any decisions about a career or future plans; 4) to the extent permitted by, law we make no representations or warranties of any kind, express or implied; 5) you release us from liability for any loss, damage or expense resulting or arising from your use of or reliance on this communication.

All rights are reserved.

**[studyworkgrow.com.au](http://studyworkgrow.com.au)**