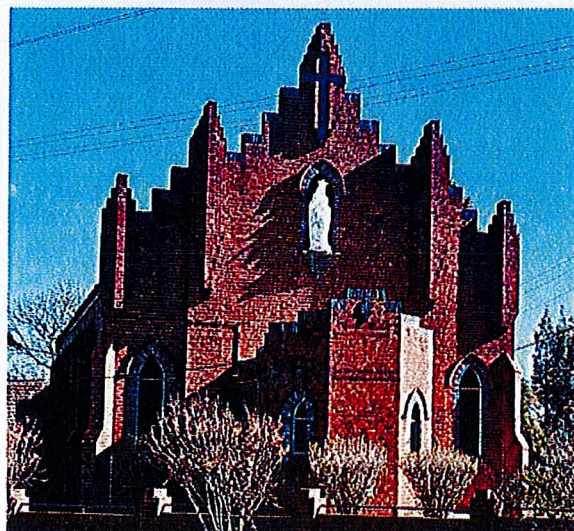


ST NICHOLAS PARISH



St Nicholas Church - East Tamworth



St Mary's Church - North Tamworth

2021 - 2022
FINANCIAL REPORT

25 June 2022

Dear Parishioner

As the Financial Year draws to a close the Parish Finance Committee, on behalf of Fr Christopher, wishes to give you an update on our Financial position relative to the last twelve (12) months.

We are pleased to report our income has exceeded our expenses which is a nice position to be in. This has occurred for the following reasons :-

- Your donations to the Planned Giving Programme are similar to last year.
- The St Mary's Oxley Vale School site has been leased since the beginning of 2022. This has given us a regular income stream and reduced our maintenance costs in this area.

Our Income is derived from the following sources (4) sources :

❖ Planned Giving & Loose Collections	47.5%
❖ Rent from St Mary's Oxley Vale & St Mary's Pre School	15.1%
❖ Diocesan Grant from ADIG	24.0%
❖ Bequests, donations, Stole Fees and Miscellaneous activities	13.4%



Our Expenditure has remained similar to last year. St Mary's & St Nicholas' Churches have had regular maintenance carried out where necessary.

We thank the many volunteers who assist with the operation of the Parish Office & Church Grounds.

Our Expenditure is as follows :

○ Diocesan Levy	3.6%
○ Church + Office Supplies	18.0%
○ Insurance	11.4%
○ Wages	26.4%
○ Office Expenses	6.9%
○ Property Expenses (Rates & Maintenance)	23.5%
○ Vehicle Expenses	5.9%
○ Electricity & Gas	6.6%
○ Miscellaneous Expenses	4.6%



Parish Stewardship Committee

Due to Covid restrictions there has been limited progress of this initiative. It is the wish of Fr Chris that this area of Parish Community be expanded in the coming Financial Year.

Church Hall - Meeting Place

Due to problems with adhering to Tamworth Regional Council requirements we have Experienced unprecedented hold-ups. We are hopefully getting to a final position where work can commence in the near future.



On behalf of Fr Chris we again thank you for your generosity and support.

It is now time to renew our Planned Giving Programme for the next Financial Year.

Planned Giving through Envelopes

- ❖ Envelopes will be distributed to those who already contribute via this method.
- ❖ Anyone wishing to be part of the Planned Giving and would like a set of envelopes – please contact the Parish Office and these will be provided.
- ❖ Giving through the Parish Giving Application is also available :-

This Parish accepts donations
via the Parish Giving
Application



www.parishgiving.brisbanecatholic.org.au



Direct debit is an easy and efficient way of making your contribution to the Planned Giving Program – please see details below.

DIRECT DEBIT

Your contribution to the Planned Giving Programme [2nd Collection – Church Account] can now be remitted through your nominated bank to our ADIG Account automatically by

This can be done in two ways :

1. Simply speak with Lorraine at the Parish Office (6766 2228) to set up a direct debit through ADIG

or

2. Set up a “Direct Debit” for your PGP Contribution through your Bank – you will need the following bank details :

Account Name : St Nicholas Parish

BSB : 082 105

Account Number : 001003255

[Please use your surname + PG No as a reference]

There is no minimum amount required, you can remit any amount on a weekly, fortnightly, monthly, quarterly, half yearly or yearly basis

If you opt to use Direct Debit and do not have a Planned Giving Number, please contact Lorraine at the Parish Office [6766 2228] so a number can be allocated.

Receipts for the 2021-2022 Financial Year are available – if you require a receipt please contact the Parish Office (6766 2228) or by email stnicholasaccounts@armidale.catholic.org.au and one will be sent out.

THANK YOU for YOUR GENEROSITY

