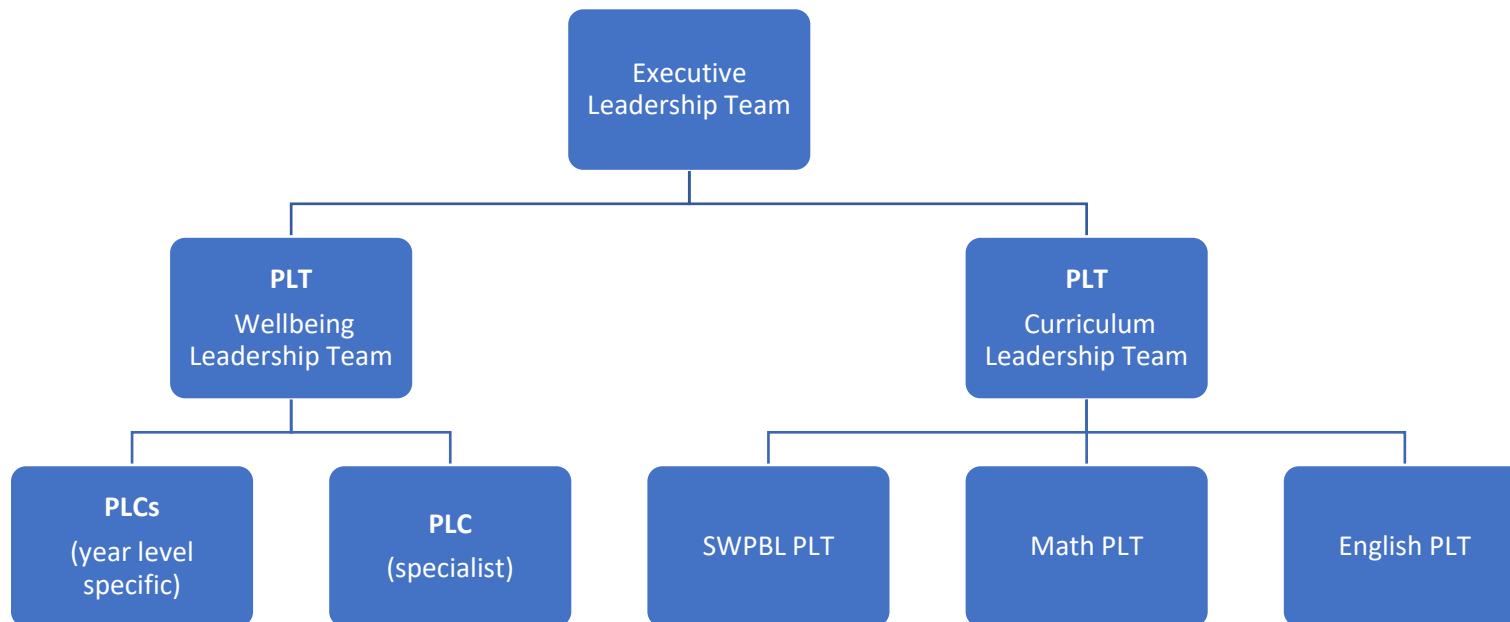


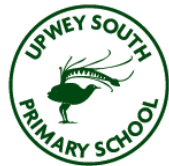


## 2025- Continuous Improvement Structure



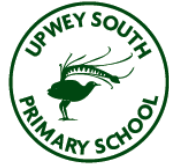
Continuous Improvement Teams	Team Members	Summary of Intent
<b>Executive</b> Leadership Team	Principal, Assistant Principal (x2)	Provide strategic direction which drives overall school improvement. Oversee protocols and frameworks which promote school-wide consistency of practice, builds data informed practices, strengthens instructional pedagogies.
<b>PLT</b> (vertical) Wellbeing Leadership Team	Principal, Assistant Principal (x2), PLC Leaders, Specialist Leader	Operational aspects and leadership of respective PLCs, through the lens of school-wide connections.
<b>PLT</b> (vertical) Curriculum Leadership Team	Principal, Assistant Principal (x2), SWPBL PLT Leader, Math PLT Leader, English PLT Leader	A clear and purposeful focus upon curriculum improvement at a school-wide level, achieved through building staff capacity.

- **Professional Learning Team (PLT)**- refers to a vertical team, consisting of learners representing horizontal communities (*formerly known as curriculum/culture teams*)
- **Professional Learning Community (PLC)**- refers to a horizontal community of learners (*formerly known as year level teams*)



## Professional Learning Communities (PLCs) Structure

Professional Learning Community	PLC Members	PLC Leader
Foundation	<ul style="list-style-type: none"><li>• Holly Peters- <b>Class FA</b></li><li>• Lisa Dam- <b>Class FB</b></li></ul>	Holly Peters
Year One	<ul style="list-style-type: none"><li>• Zoe Bates- <b>Class 1A</b></li><li>• Julie Hall- <b>Class 1B</b></li><li>• Tanya Howell- <b>Class 1C</b></li></ul>	Julie Hall
Year Two	<ul style="list-style-type: none"><li>• Bec Crawford- <b>Class 2A</b></li><li>• Rebecca Hobson- <b>Class 2B</b></li></ul>	Rebecca Crawford
Year Three/Four	<ul style="list-style-type: none"><li>• Michelle Wright- <b>Class 34A</b></li><li>• Lachlan Prasad- <b>Class 34B</b></li><li>• Rebecca Calvert (M-F Term One &amp; Term Two only) and Katherine Jones (M-F all year)- <b>Class 34C</b></li><li>• Melissa Woollard – <b>Class 34D</b></li></ul>	Bec Calvert
Year Five/Six	<ul style="list-style-type: none"><li>• Krista Carpenter- <b>Class 56A</b></li><li>• Andrew McFarlane- <b>Class 56B</b></li><li>• Stacey Bowles- <b>Class 56C</b></li></ul>	Stacey Bowles
Specialist	<ul style="list-style-type: none"><li>• Penelope Lang- <b>Performing Arts</b></li><li>• Danielle Haines- <b>Visual Arts</b></li><li>• Justin Scicluna- <b>Health/Physical Education</b></li><li>• Hayley Oliver- <b>Science</b></li><li>• Amanda Oakley- <b>LOTE Auslan (F-2)</b></li><li>• Shar Stjerne- <b>LOTE Auslan (3-6)</b></li></ul>	Justin Scicluna



## School-Wide Structure of Support

School-Wide Structure of Support	Support Staff
Executive Leadership Team	<ul style="list-style-type: none"><li>• Damien Kitch- <b>Principal</b></li><li>• Llewela Humphries- <b>Assistant Principal- Wellbeing and Inclusion</b></li><li>• Melinda Rowe- <b>Assistant Principal- Curriculum and Pedagogy</b></li></ul>
Administration Team	<ul style="list-style-type: none"><li>• Janet Young- <b>Business Manager</b></li><li>• Janette Clarke- <b>Office Manager</b></li><li>• Daniel Nisi- <b>Technical Support Officer</b></li></ul>
Education Support Team	<ul style="list-style-type: none"><li>• Meagan Tustin- <b>Learning Support Officer</b></li><li>• Grace Hardwick- <b>Learning Support Officer</b></li><li>• Hellen Lloyd- <b>Learning Support Officer</b></li><li>• Amanda Oakley- <b>Learning Tutor (F-2)</b></li><li>• Shar Stjerne- <b>Learning Tutor (3-6)</b></li><li>• Vicky Procyk- <b>School Counsellor</b></li></ul>