

Arrival
Friday 7th
February
after
7:30 PM

Campers are expected to arrange their own transport to and from the campsite.

Departure

Sunday 9th February at
3:00 - 3:30pm

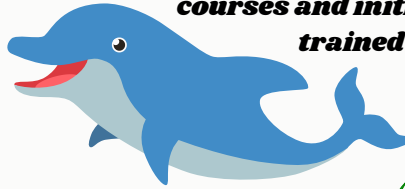
We do request families to arrive at the campsite by 1:50pm on Sunday to attend the campers' presentation of what they have learned at camp



If there is difficulty with that, please ring 0447 309 832 and we will try to arrange transport for your child.

Activities

The activities on this camp will include sessions about affirmation, goal setting and vision. Additionally, the campers will participate in group and individual outdoor rope courses and initiative activities with trained camp staff.



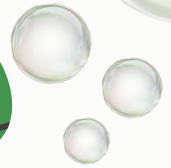
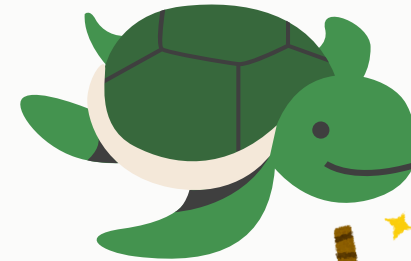
In our Level 2 camp, we continue to work on building self-esteem and confidence with a particular focus on the areas of affirmation, vision, and goal-setting.

- Helping kids to:
- ✓ build up self-esteem and confidence
 - ✓ work through struggles with communication and difficulty making friends
 - ✓ learn coping strategies for stress and anxiety

- This Camp has:
- ✓ ropes course
 - ✓ climbing wall
 - ✓ fun challenges
 - ✓ drama & talent quest
 - ✓ indoor and outdoor games



Scan here to learn more about Kids of Gold



Lyrebird Park
510, Beenak Rd,
Yellingbo, VIC

Proudly sponsored by:



✉ info@kidsofgold.org.au

☎ 0447 309 832

✂ [kidsofgoldcamps](https://www.kidsofgoldcamps.com)

📷 [kidsofgoldcamps](https://www.kidsofgoldcamps.com)

📘 Kids of Gold Camps

Camp Fees

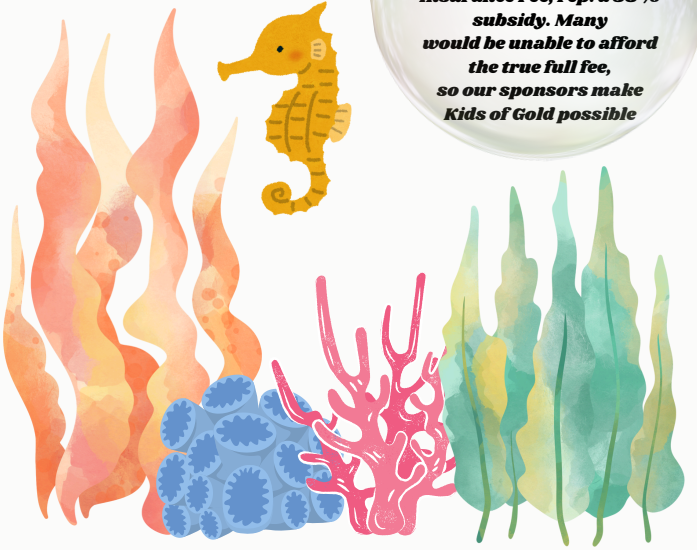
Cost:
\$85
for full-weekend camp

\$35
deposit

Our bank details:
Account Name: Kids of Gold
BSB: 633 000
Account No.: 129551552

Book online via
kidsofgold.org.au or fill out this application and send to
info@kidsofgold.org.au

Please note: This camp is subsidised - \$140 PP (representing a 54% subsidy) plus \$15PP Insurance Fee, rep. a 58% subsidy. Many would be unable to afford the true full fee, so our sponsors make Kids of Gold possible



All About the Camper

Please read each question carefully and answer them as accurately as you can.

First Name

Last Name

Date of Birth

Gender

School and Grade

Are there any medical or dietary needs?

Bedwetting?

Medicare No.

Do you give permission for first aid and medical to be given if required (e.g. Panadol)?

Guardian's Name

Relationship with Camper
e.g. parent, grandparent etc.

Emergency Contact No.

Email Address

Home and/or Postal Address

History/ Areas to work on

Are there some particular areas where you would love to see confidence or self-esteem increased in your child, it would help us to know so that we can work on that during the camp.

Special Skills, Abilities or Interests:

All the information on this form is kept private and confidential. By signing this form, you agree that Lyrebird Park Camp and Kids of Gold staff cannot be held liable for accidents and injuries that may occur on the camp, including visitors & visitors children not booked in

Signature