



Australian
National
University

Undergraduate

2020 DOMESTIC
UNDERGRADUATE
STUDENT GUIDE

ANU



MESSAGE FROM THE VICE - CHANCELLOR



Welcome to ANU

It gives me great pleasure to introduce you to our undergraduate student guide for 2020.

Choosing where you will go to study after you have finished school is one of the most important decisions that you will ever make.

I made the decision to join ANU because I believe that ANU is a world leader in providing both students and staff the most incredible opportunities to transform their own lives and truly change the world.

Our university motto is “First, to learn the nature of things”. We have created an environment that allows great minds to reach their potential through excellence in teaching, providing transformative opportunities for growth and encouraging confidence to explore new ideas.

Our community consists of bright and engaged students who come from across Australia, our region and around the world, giving you the chance to meet amazing people and build lifelong friendships.

Our students are central to everything we do here at ANU. We encourage students to live right here on our beautiful parkland campus in the national capital, allowing you to fully immerse yourself in the University community.

You will have the chance to learn from some of the world’s best teachers who are at the forefront of their fields and you will become part of a lively intellectual community.

Everyone at the University stands for the highest possible standards of ethical behaviour and we support the kind of inclusive and diverse environment that leads to more original thinking and better outcomes for our community, the nation and the world.

If you want to change the world, if you want to shape the future, if you want to make a real difference, ANU will help you get there. Our graduates are amongst the most employable around the globe and our alumni include many of the world’s movers and shakers.

Long after they have graduated, our students continue to connect through our extensive Alumni Relations program, creating extensive professional and social networks around the world.

I am pleased to invite you to join us at ANU to undertake your undergraduate studies and look forward to welcoming you into our community.

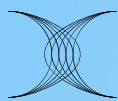
Professor Brian P. Schmidt AC
Vice-Chancellor and President



Science precinct, ANU

CONTENTS

About Canberra	2	Global opportunities	15
About ANU	3	Single degree programs	16
Your career starts now	4	Flexible Double Degrees	20
How to apply	6	Undergraduate Research Degrees	22
Adjustment factors	7	Flexible Vertical Double Degrees	24
The Co-Curricular or Service Requirement	8	FVDD Combinations	25
Indigenous opportunities	10	Plan your degree	26
Scholarships	11	Support services	28
Accommodation	12	Tuition, fees & financial assistance	29
Internships	14		



INTERNATIONAL ALLIANCE OF
RESEARCH UNIVERSITIES

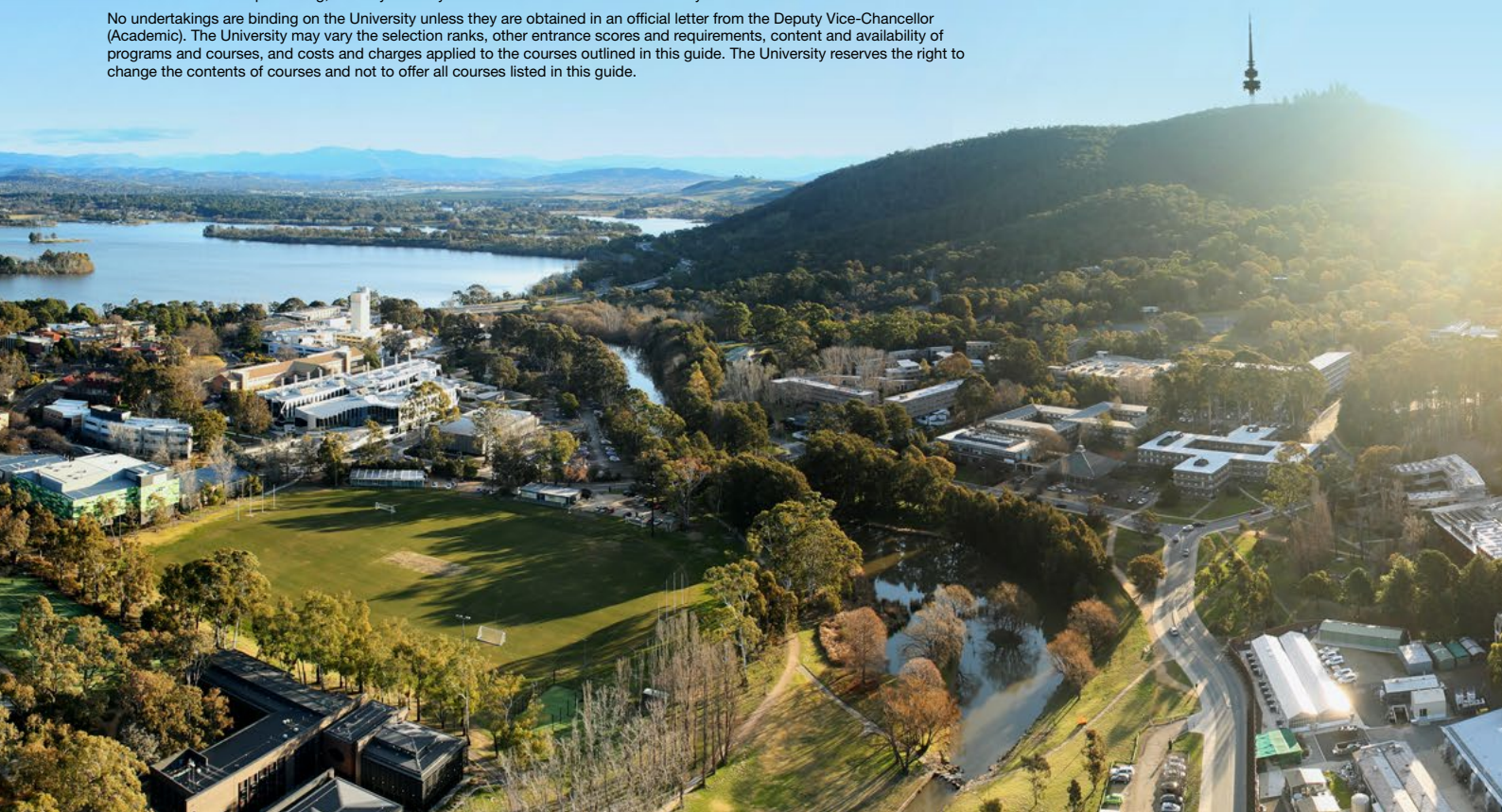
The International Alliance of Research Universities (IARU) is a collaboration of 11 of the world's leading research-intensive universities that share a similar vision and have a commitment to educating future leaders.



The Group of Eight (Go8) is a coalition of leading Australian universities, comprehensive in general and professional education and distinguished by depth and breadth in research.

Correct at the time of publishing, January 2019 by the The Australian National University. CRICOS Provider Number: 00120C

No undertakings are binding on the University unless they are obtained in an official letter from the Deputy Vice-Chancellor (Academic). The University may vary the selection ranks, other entrance scores and requirements, content and availability of programs and courses, and costs and charges applied to the courses outlined in this guide. The University reserves the right to change the contents of courses and not to offer all courses listed in this guide.



ABOUT CANBERRA



#1 most liveable city in the world¹

#3 best city to visit in the world³

#22 best student city in the world²



25% of Canberra's population are students⁴



Shortest commute times of any Australian city



2 hours drive from Canberra to the snow and the sea



25% of Canberra's population were born overseas⁴



3 hours drive from Sydney to Canberra



Highest proportion of campus accommodation in Australia



Schools Enrichment Program

If you're in years 10 to 12, the Schools Enrichment Program (SEP) set on the ANU campus is an amazing opportunity to experience what it's like to learn at Australia's national university. You'll participate in workshops covering a range of disciplines from Fine Arts to Astrophysics and everything in between. The program runs during the Semester 1 and 2 teaching periods and suits local and visiting student groups. For more information, go to anu.edu.au/sep



Campus tours

A great way to get a vibe for studying at ANU is to take a campus tour. No one tour is the same as we design them especially for you.

Tours are free and can be booked between 10am-5pm Monday to Friday (excluding public holidays). Bookings are essential.

Go online to anu.edu.au/campus-tours

1. 2017 Numbeo Quality of Life Index

2. QS Best Student Cities 2018

3. Lonely Planet Best in Travel 2018

4. Study Canberra

ABOUT ANU



Our University

#1
university
in Australia¹

#24
university
in the world¹

#7
most international
university in the world²



6
Nobel Prize winners
among our staff
and alumni



Our students

25,500
total number
of students

12,800
undergraduate
students

5,000
students living
on campus

5 star
rating for
staff-to-student ratio³



Our graduates

#7
most employable
graduates in Australia¹

#84
most employable
graduates in the world¹

\$5k
higher average salary
for ANU graduates⁴

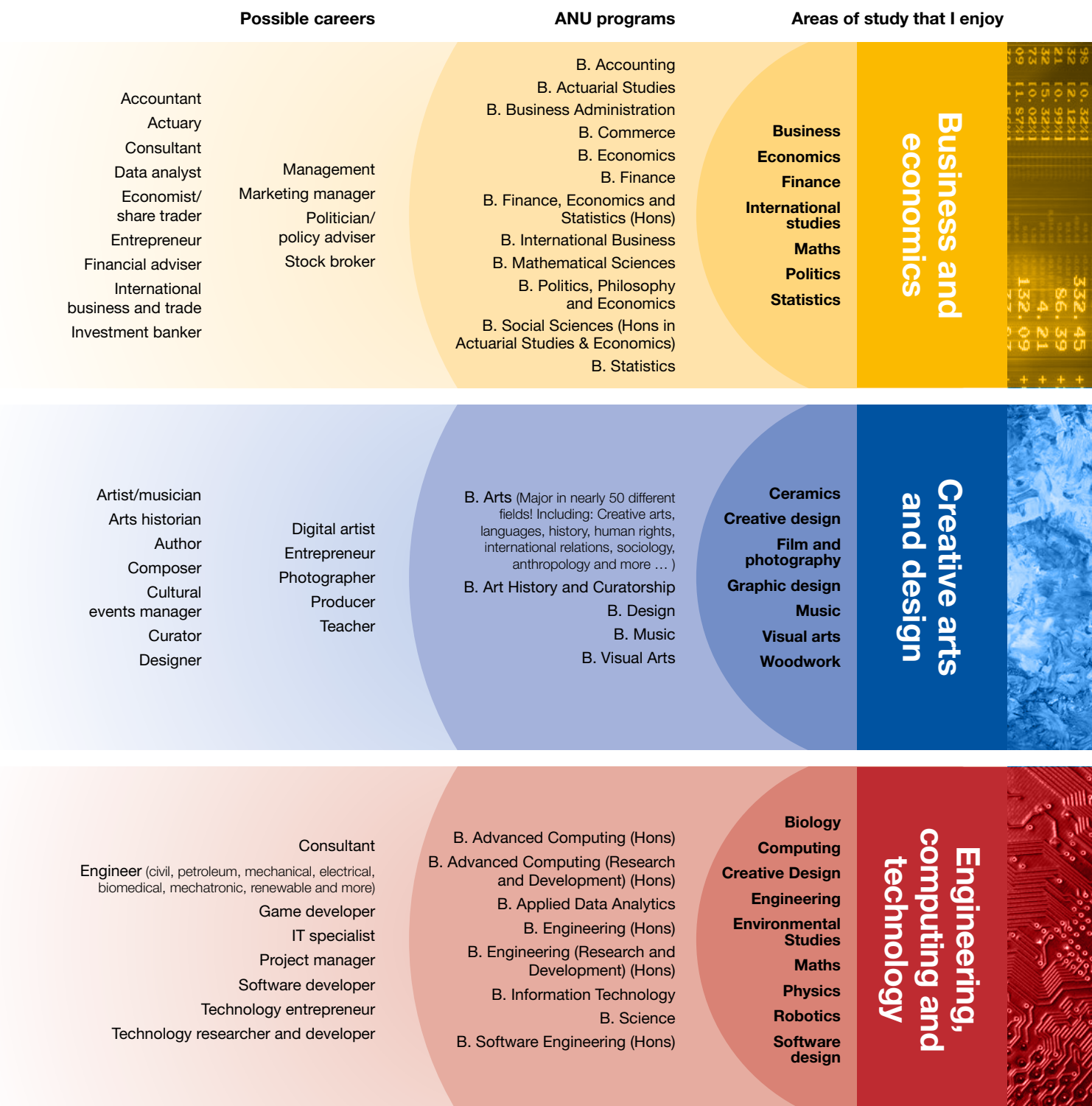
To keep up to date on prospective student events, go to

anu.edu.au/study/events

1. QS World University Rankings 2019 2. Times Higher Education Rankings 2018
3. Good Universities Guide 2018 4. Graduates in full-time employment in the medium-term compared to national median, Graduate Outcomes Survey 2018

YOUR CAREER STARTS NOW

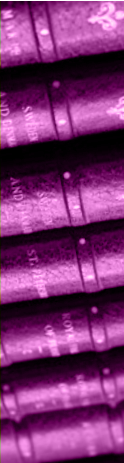
The chart will help you match areas of study at school with degree programs, and possible career paths. Keep in mind that this is a guide – you won't be limited to these pathways.

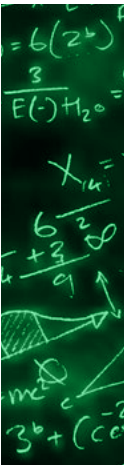


Areas of study that I enjoy

ANU programs

Possible careers

Areas of study that I enjoy	ANU programs	Possible careers
 Law and government	Criminology Debating Journalism Legal studies Politics Psychology	Business analyst Defence official Detective/criminal profiler Diplomat Intelligence officer Journalist Judge Lawyer Politician/policy adviser Psychologist Solicitor

Areas of study that I enjoy	ANU programs	Possible careers
 Maths and science	Biology Chemistry Environmental studies Human movement Maths Physics Psychology Science	Biologist Chemist Communications officer Environmental scientist Forester Genetic counsellor Geologist Medical adviser Policy adviser Psychologist Science researcher Scientist (hundreds of specialisations) Teacher Zookeeper

Areas of study that I enjoy	ANU programs	Possible careers
 Social sciences and humanities	English Geography Global studies History Languages Social sciences Sociology	Aid and development officer Author Diplomat Editor Foreign correspondent Heritage consultant Historian International business and trade Interpreter/translator Journalist Politician/policy adviser Researcher Scriptwriter Teacher Tourism manager

HOW TO APPLY

Apply direct to ANU

1. Check you're eligible to submit a direct Admission, Scholarships and Accommodation application

- > You can complete a direct application if you are a domestic Australian school leaver in 2019, wanting to apply for an undergraduate program that starts in 2020.
- > Australian school leavers mean those who will complete an Australian Year 12 or International Baccalaureate Diploma (November session) in Australia in 2019.
- > You can also apply for campus accommodation and all available scholarships in the same application.

2. Consider which programs are best for you

- > Choose from over 50 bachelor degrees, or combine degrees to study a flexible double degree program. To find out which degree suits your interests and career goals, see page 20
- > Some degrees require you to have studied specific subjects in Year 12. Before you apply, make sure you're eligible for your chosen degree by checking the prerequisites on page 16.

3. Check you meet the co-curricular or service requirement

- > All domestic school leavers are required to meet the requirement.
- > You can find out more about the requirement on page 8.

4. Apply direct to ANU

- > Great work! You're now ready to apply.
- > Remember applications open on 4 March 2019 and close on 31 May 2019.

Direct application dates

- > **4 March 2019**
Direct applications to ANU open
- > **31 May 2019**
Direct applications to ANU close
- > **1 August 2019**
Conditional offers released
- > **5 September 2019**
Conditional offer acceptance deadline
- > **13 December 2019**
ATARs begin to be released
- > **From late December 2019**
Final offers begin to be released
- > **23 January 2020**
Final offer acceptance deadline
- > **17 February 2020**
ANU Orientation Week
- > **24 February 2020**
Classes commence

Apply through UAC

If you do not meet the criteria to submit a direct application to ANU, don't worry, you can apply to ANU via UAC (The Universities Admissions Centre). You can submit a UAC application if you're:

- > not a school-leaver, e.g., a gap year student
- > seeking admission as a mature-age applicant
- > transferring from another institution
- > otherwise not a domestic Australian school-leaver.

UAC application dates

- > **August 2019**
UAC applications open
- > **2019 Closing date**
Refer to uac.edu.au

ADJUSTMENT FACTORS

Equity adjustments

ANU Bachelor degree programs with a minimum selection rank requirement of 80.00-97.00 may receive up to 10 equity adjustments. ANU Bachelor degree programs with a minimum selection rank requirement of 98.00 or above may receive up to 5 equity adjustments. ANU allocates National Access adjustment factors in recognition of difficult circumstances that you may have faced in your studies. Refer to anu.edu.au/study/apply/national-access-scheme

Educational Access Scheme (Equity) Schedule Domestic Applicants

EAS type	Equity adjustments	EAS category and description
Financial hardship	Up to 6	F01A–Youth Allowance/Austudy/Abstudy
	Up to 6	F01B–Other Centrelink income
	Up to 6	F01C–Exceptional financial hardship
	6	F01D–Parental Family Tax Benefit Part A
Severe family disruption	Up to 5	H01A–Death of immediate family member/close friend
	Up to 5	H01B–Life-threatening or severe illness of immediate family
	Up to 5	H01C–Divorce or separation of parents or applicant
	Up to 5	H01D–Legal matters
Excessive family responsibility	Up to 6	H03A–Care of children/other family members
	Up to 6	H03B–Required to work to support family
	Up to 3	H03C–Sole responsibility for care of self
Abuse	Up to 5	H04A–Abuse to applicant, parents, or siblings
English language difficulty	Up to 3	L01A–ESL/started school in Australia in Year 11 or 12
Personal Illness /disability	Up to 5	P01A–Disability or long-term medical condition
Refugee status	5	R01A–Refugee status
School environment	Up to 3	S01C–Rural school
	Up to 5	S01D–Studying Year 12 subjects by distance education or Access program

You may be considered for adjustment factors if you have:

- > applied directly to ANU or through UAC for an eligible ANU Bachelor degree program
- > undertaken Australian Year 12 or International Baccalaureate
- > achieved an ATAR or equivalent at or above 70
- > not previously attempted tertiary study.

Disclaimer: Correct at time of print January 2019. Adjustment factors are reviewed annually please refer to anu.edu.au/study/apply/anu-adjustment-factors

Elite athlete and performer adjustments

ANU is an Elite Athlete Friendly University. We will provide additional support if you are recognised as an elite athlete by the Australian Sports Commission's AIS Personal Excellence program.

If you are an elite athlete or sporting coach, you may be eligible for five elite athlete and performer adjustments.

- > anu.edu.au/study/apply/elite-athlete-status



ANU Rowing Team on Lake Burley Griffin

THE CO-CURRICULAR OR SERVICE REQUIREMENT

To apply to ANU, you have to meet our co-curricular or service requirements*. Check to see if you have met the requirements before you apply.

Skill to succeed

The skills you gain outside of the classroom matter. These experiences will help you succeed at university and increase your employability upon graduation. At ANU you'll have the opportunity to develop these skills further through participating in internships, international exchange programs and much more.

In your application, you will have the opportunity to tell us what you learnt outside the classroom. These include activities such as volunteering, part-time work, caring for a family member or playing sport.

Meeting the co-curricular or service requirement

To gain admission to ANU, you will be required to meet the co-curricular or service requirement in addition to meeting the academic requirements for your preferred ANU program. The matrix on the next page provides examples of the type of activities that we recognise.

Each activity is mapped against seven skills:

- > Creative and Critical Thinking
- > Community Engagement
- > Inclusion and Awareness of Diversity
- > Communication
- > Leadership
- > Personal Responsibility
- > Teamwork

You have met the co-curricular or service requirement when you can demonstrate that you've attained **at least three of seven skills**.

How the co-curricular or service requirement works

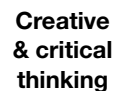
- > The co-curricular or service requirement is a threshold which is either met or not met. We won't rank you against other applicants.
- > The requirement won't modify your ATAR or ANU selection rank. You must meet it in addition to other admission requirements that apply to your preferred program.
- > The requirements can be met through activities that were completed in Years 10, 11 or 12; and must be met at the time of application.
- > Supporting documentation must be submitted to confirm your participation in activities. Example documentation and templates are available for download.

For more information and to check if you've met the co-curricular or service requirement, see:

anu.edu.au/study/apply



* If you are a domestic Australian school leaver in 2019, wanting to apply for an undergraduate degree starting in 2020.



Creative and Performance Activities					
Creative Art (Individual)					
Competitive Writing					
Heywire Competition					
Future Leaders Writing Prize					
Whitlam Institute What Matters? Competition					
Poetry					
Panda Competition					
Creative Art (Team)					
Creative Performance (Individual)					
Creative Performance (Group)					
Cast or Crew member of a Creative Production					
Lead Performer or Lead Crew Member of a Creative Production					

Gaming, Sport and Fitness Activities				
Sport (Individual)				
Gaming (Individual)				
Sport or Gaming (Team)				
Fitness or Training (Individual)				
Fitness or Training (Group)				
Coaching or Leading a Gaming, Sport or Fitness Activity				
Umpiring a Gaming, Sport or Fitness Activity				
National Interscholastic Chess Competition				

- competitively rank students by the activities they undertake
- change a student's ATAR, or impact other entry requirements
- replace ANU adjustment factors

INDIGENOUS OPPORTUNITIES

As Australia's national university, we strive to lead the way when it comes to acknowledging, celebrating and supporting our Indigenous people.

With this in mind, we make a point of maximising opportunities for our Aboriginal and Torres Strait Islander students.

Tjabal Indigenous Higher Education Centre

'Tjabal' describes the return of people and clans to a central meeting place—a homeland. Bringing these experiences, knowledges, and memories together allows us to share and grow as a community. At the Tjabal Centre, you will find Indigenous students and staff strongly committed to improving education outcomes and achieving study and career goals that positively impact Indigenous communities.

The Tjabal Centre provides:

- > academic support and advice
- > pastoral care and personal support
- > access to free, high quality tuition
- > advice on internships and scholarships
- > access to ANU services, including the health centre, careers and academic skills and learning
- > outreach programs for prospective ANU students
- > study spaces, a computer laboratory and lockers
- > bikes for cross-campus use.

Indigenous pathway

All Indigenous students who want to study at university should be able to do just that.

- > Priority admission. This means that if you meet the admission requirements for your ANU program of choice and declare your Indigenous heritage, you will be given preference.
- > anu.edu.au/indigenous-pathways



Zoe Turner

Bachelor of Actuarial Studies

"I grew up moving around a lot in Queensland and Tasmania. A constant in my life has been my culture. I applied to ANU because of its strong reputation both academically and in its community. As a Torres Strait Islander student, knowing that ANU has a strong Indigenous community has made the transition to Canberra and university life much easier. Seeking out support when you need it will improve your university experience so much, and knowing that the Tjabal Centre is always there, will put you at ease. In addition, attending Tjabal events will open up opportunities and allow you to meet new, fabulous people. I've enjoyed my time at ANU immensely and look forward to using what I have learned to make a contribution to my culture."

SCHOLARSHIPS

You can apply for a wide range of scholarships at ANU to help make university more affordable.

Scholarships are awarded for a range of things including academic merit, financial need, and equity and accessibility, and can help to offset the cost of tuition, accommodation and travel expenses among other things.

Some of our scholarships include:

The Tuckwell Scholarship

The most transformational undergraduate scholarship program in Australia is made possible through the generosity of ANU alumnus Graham Tuckwell and his wife Louise. The scholarships are funded by the largest ever contribution made by an Australian to an Australian university.

Applications for students commencing in 2020 open 4 March 2019 and close 28 March 2019.

National Indigenous University Scholarship & National Indigenous Merit Scholarship

The objectives of the National Indigenous University Scholarship (NIUS) and National Indigenous Merit Scholarship (NIMS) are to acknowledge the academic excellence of Indigenous students in secondary school studies and provide assistance with costs related to tertiary studies.

To be considered for the NIUS, an ATAR 95.00 and above or equivalent, with no adjustment factors, must be achieved.

To be considered for the NIMS, an ATAR between 90.00 to 94.94 or equivalent, with no adjustment factors, must be achieved. Additional eligibility criteria apply.

National University Scholarship

The National University Scholarship (NUS) is to acknowledge the academic excellence of students in secondary school studies and provide assistance with costs related to tertiary studies.

To be considered for the NUS an ATAR 99.90 and above or equivalent, with no adjustment factors, must be achieved. Additional eligibility criteria apply.

Australian National Scholarship

Each year the Australian National University may offer up to 25 awards known as the Australian National Scholarship.

The award is to provide access and support to talented students from disadvantaged backgrounds.

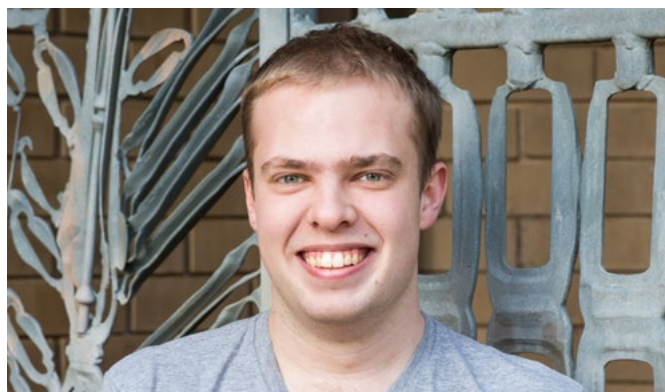
Australian Excellence Scholarship

The Australian Excellence Scholarship is to acknowledge the achievement and provide financial assistance and support the top three student's achieving the highest ANU selection rank or ATAR in each Australian state and territory.

The Love Scholarship

Love Scholarships give a helping hand to students who have faced life circumstances that pose a serious and sustained challenge to their ability to study at university. Love Scholarships promote and support equity and diversity at ANU.

- > To see our full range of scholarships and eligibility requirements, go to anu.edu.au/students/scholarships-support
- > students who submit a direct application to ANU can choose to be considered for all available scholarships. Students who apply through UAC are required to apply for scholarships separately.
- > www.anu.edu.au/students/scholarships-fees/scholarships



Jonah Hansen

Bachelor of Philosophy (PhB) Science

"I am fortunate enough to have received the Tuckwell Scholarship; a scholarship that not only provides financial help but offers multiple opportunities and personal development programs that have benefited me substantially. At the heart of the scholarship is a desire to help students find their true potential so that they can one day give back to Australia, which is a very noble goal."

ACCOMMODATION

Be a part of our residential community on campus.

Live on campus

ANU has different residences for undergraduate students. You choose between catered, self-catered or flexi-catered options. The residences have laundry facilities, outdoor spaces and study rooms, and are all in walking distance of shops, cafes, sporting facilities, clubs and public transport.

Live off campus

There are a number of ANU-recommended accommodation options off campus too: Weeden Lodge, the Australian Institute of Sport Residences and University of Canberra Village.

You can also choose to rent your own house or apartment, either by yourself, or in a share-house arrangement.

Accommodation Guarantee

You can apply for accommodation at ANU at the same time you apply for your degree – it's that easy. If you're moving to Canberra from interstate, we guarantee you somewhere to live on campus during your first year of university. Refer to www.anu.edu.au/study/accommodation for application deadline.

Cost of living

In addition to accommodation costs, you will also have other costs to consider when moving out of home to study at university. It is a good idea to make a list of your expenses, for example: mobile phone and internet, textbooks and stationery, and transport and entertainment. Draw up a budget based on your circumstances to help you work out how much money you will need to live on while you are at university.

Go to anu.edu.au/students/program-administration/costs-fees/cost-of-living for more information.

Average weekly cost of living in Canberra

Accommodation	\$155 (sharing) - \$245 (self-catered residence)
Food and groceries	\$90 - \$125
Travel	\$30
Phone and internet/other bills	\$25
Electricity and gas	\$40
Incidentals (stationery, clothes, haircuts)	\$30
Spending money (dining out, entertainment)	\$50
Average approximate expenditure	\$420 per week



SA5, ANU



Brittany Mashado

Flexible Double Degree, Bachelor of Politics, Philosophy, Economics/Bachelor of Laws (Hons)

"Leaving home is hard. One of the scariest things I have done in my life was taking the leap from the safety of my family and community in Adelaide to move to Canberra for university study. It is also the best decision I have made to date. As someone who is extremely close to my family, I never expected to settle in so quickly at ANU."

Since arriving in Canberra I have made some of my closest friends and had continuous pastoral support from the Senior Resident team. I have had academic support from lecturers, tutors and older students and spent countless mealtimes sitting in the dining hall thinking how grateful I am to be at ANU. The University's educational quality speaks for itself; the only thing that made me hesitant about moving was leaving my family. But now I call ANU home, and my College my family."

2019 residential fees

Residence/Hall/ College/Lodge	Catering style	Weekly rent (\$)	Registration fee (\$) (once only)	Refundable deposit (\$)	Residents' Committee fee (\$) (per year)
Bruce Hall	Catered*	from \$423.00	\$300.00	\$1,000.00	\$180.00
Burgmann College	Catered*	from \$428.17	\$459.00	\$1,000.00	\$210.00
John XXIII College	Catered*	from \$424.00	\$425.00	\$300.00	\$300.00
Ursula Hall	Catered*	from \$396.70	\$300.00	\$1,000.00	\$175.00
Burton & Garran Hall	Self-catered	from \$227.45	\$300.00	\$1,000.00	\$150.00
Fenner Hall	Self-catered	from \$290.00	\$300.00	\$1,000.00	\$220.00
Davey Lodge**	Self-catered	from \$255.89	\$300.00	Four weeks' rent	\$100.00
Kinloch Lodge**	Self-catered	from \$266.11	\$300.00	Four weeks' rent	\$100.00
Warrumbul Lodge**	Self-catered	from \$241.10	\$300.00	Four weeks' rent	\$100.00
Lena Karmel Lodge**	Self-catered	from \$244.11	\$300.00	Four weeks' rent	\$100.00
Wamburun Hall	Self-catered	from \$288.10	\$300.00	\$1,000.00	\$165.00
Wright Hall***	Flexi-catered	from \$400.00	\$300.00	\$1,000.00	\$180.00

* 21 meals per week.

** Additional utilities/data charge of \$29 per week included.

*** 16 meals per week

Please note:

Some halls, colleges and lodges charge extra for phone, internet connections and other services.

The fees listed in the table are for 2019 and subject to change. Go to anu.edu.au/study/accommodation for updates on current fees and any other costs involved. All figures in this table are in Australian dollars.

INTERNSHIPS

Get job-ready skills and contribute to something bigger than you. Take on some amazing internships here and overseas, some of which are exclusive to ANU.

Australian National Internships Program

An elite opportunity for you to undertake a 12-week research-oriented internship with organisations like the ACT Legislative Assembly, government departments and agencies, embassies and diplomatic missions, national cultural institutions, leading NGOs, industry organisations, think-tanks and policy research centres.

The Australian National Internships Program (ANIP) is the only university program that offers Australian Commonwealth Parliamentary Internships. Interns are based in the offices of Members of Parliament and Senators and engage with a range of portfolio activities that shape national policymaking.

> anip.anu.edu.au

Taiwan Public Policy Internship Program

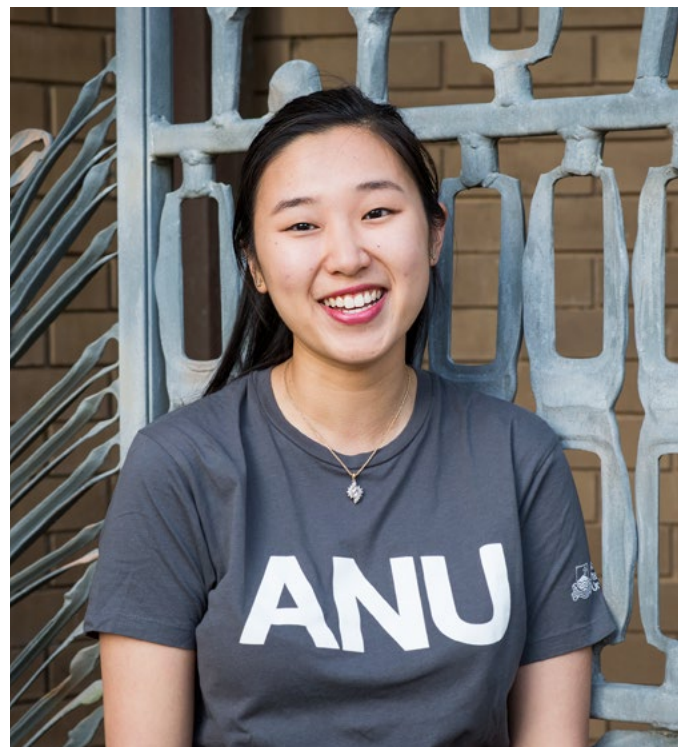
Head to Taiwan and undertake a six-week research internship with a department or agency in the Taiwanese Government.

The Taiwan Public Policy Internship Program can be undertaken by students of the ANU School of Politics and International Relations for course credit.

Washington Internship Program

Offered through the ANU School of Politics and International Relations, you will get to experience political life in Washington DC over seven weeks in the United States Congress.

You'll work in the offices of Members of Congress or on the staff of Congressional committees while completing a program of research on a specialised aspect of American government, politics, and public policy.



Tiffany Tang

Flexible Double Degree, Bachelor of Laws (Hons)/Bachelor of Music

"I was very fortunate to be selected to undertake an internship with the Department of Foreign Affairs and Trade (DFAT) as a part of my law degree. Under the direct supervision of a solicitor, and at the time the Acting Director of Sea Law, Environment & Antarctic Law section in DFAT, I wrote a research paper examining historic rights in the context of international sea law. This experience added a practical dimension to my studies, and allowed me to explore in depth an area of law that I was highly interested in. Drawing from my supervisor's wealth of knowledge and experience, I gained valuable insight into the professional workplace while also practically contributing back to the department."

GLOBAL OPPORTUNITIES

Expand your outlook and include overseas experience in your study program.

Student Exchange

Overseas travel gives you opportunities to study courses beyond those offered at ANU, make friends and form global networks, and to build skills and knowledge that can expand your career options.

You can undertake a traditional exchange opportunity with one of our 170 partner universities across 39 countries. Apply to spend one or two semesters at a leading university in one of these distinctive destinations, while you earn credits towards your ANU degree.

Destinations

Europe

- > Austria
- > Belgium
- > Czech Republic
- > Denmark
- > Finland
- > France
- > Germany
- > Hungary
- > Ireland
- > Italy
- > The Netherlands
- > Norway
- > Portugal
- > Spain
- > Sweden
- > Switzerland
- > Turkey
- > United Kingdom

Indo-Pacific

- > Brunei
- > China
- > French Polynesia
- > Hong Kong
- > India
- > Indonesia
- > Japan
- > Myanmar
- > New Caledonia
- > New Zealand
- > Singapore
- > South Korea
- > Taiwan
- > Thailand

North & South America

- > Brazil
- > Canada
- > Chile
- > Colombia
- > Mexico
- > Peru
- > United States of America

IARU Global Summer Program

ANU is the only Australian member of the International Alliance of Research Universities (IARU)

Through IARU, you can study at some of the world's top universities for up to six weeks and connect with outstanding peers around the world.

IARU Partner Universities

- > University of Cambridge, UK
- > Yale University, USA
- > University of Copenhagen, Denmark
- > ETH Zurich, Switzerland
- > University of Tokyo, Japan
- > University of Oxford, UK
- > University of California, Berkeley, USA
- > Peking University, China
- > National University of Singapore
- > University of Cape Town, South Africa

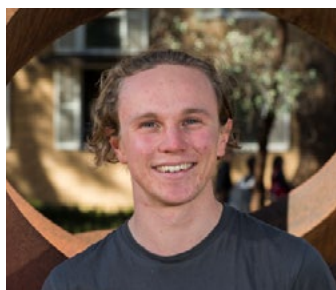
Year in Asia

The Bachelor of Asia-Pacific Studies (Year in Asia) is designed to help you establish yourself as a future leader in the region and the experience will build on the strengths of your three-year degree, helping you to further develop language and cultural proficiencies.

PRIMO First Year Learning Abroad Programs

No other Australian university offers a comprehensive travel abroad program for first-year students. PRIMO is a Learning Abroad initiative in which you can undertake short, multidisciplinary, overseas learning experiences as part of your first-year studies. Here's what you could be doing next summer:

- > Take in the beauty of Kyoto, learning about Japanese language and culture.
- > Head to old world Budapest in Hungary, the Pearl of the Danube, to study business and marketing.
- > anu.edu.au/students/careers-opportunities/global-programs



Matthew Lord

Bachelor of Arts

"Spending six months studying in Sweden at Lund University not only gave me many new friends and a new appreciation for

fish and meatballs, but also a broader experience of my academic subjects and an international perspective on my discipline. Exchange teaches you to communicate across different cultures and get along with people who you would otherwise never meet. Exchange, along with the many other opportunities at ANU, is not to be missed."

SINGLE DEGREE PROGRAMS

Want to focus your studies?

Choose from over 50 single degree programs across our seven academic colleges. Focus on a specific subject area or select a combination of subject areas to explore.

Single degrees generally take between three and four years of full-time study to complete, and allow you to focus on a structured discipline or experience a broad range of subjects.

If you have a career in mind and know what you want to study, choose a structured degree like a Bachelor of Engineering (Honours) or a Bachelor of Health Science.

If you want flexibility to study a range of subjects within a discipline, choose something like the Bachelor of Arts or Bachelor of Science.

Bachelor of	Length	2019 Selection Rank	OP	IB	Prerequisites
-------------	--------	---------------------	----	----	---------------

Business and economics

Accounting	3 years	87	7	31	Assumed knowledge - Maths
Actuarial Studies	3 years	97	3	39	Advanced Maths. (ACT: Specialist Mathematics (Major/Minor) (160+)/ Specialist Methods(Major/Minor) (160+), NSW: Mathematics Extension 1 (Band E3) or equivalent.)
Business Administration	3 years	86	8	31	
Commerce	3 years	86	8	31	Assumed knowledge - Maths
Economics	3 years	87	7	31	Assumed knowledge - Maths
Finance	3 years	87	7	31	Assumed knowledge - Maths
Finance, Economics and Statistics (Honours)	4 years	99	1	42	Advanced Maths. (ACT: Specialist Mathematics (Major/Minor) (160+)/ Specialist Methods(Major/Minor) (160+), NSW: Mathematics Extension 1 (Band E3) or equivalent.)
International Business	3 years	87	7	31	Assumed knowledge - Maths
Social Sciences (Honours in Actuarial Studies and Economics)	4 years	97	3	39	Advanced Maths. (ACT: Specialist Mathematics (Major/Minor) (160+)/ Specialist Methods(Major/Minor) (160+), NSW: Mathematics Extension 1 (Band E3) or equivalent.)
Statistics	3 years	87	7	31	Advanced Maths. (ACT: Specialist Mathematics (Major/Minor) (160+)/ Specialist Methods(Major/Minor) (160+), NSW: Mathematics Extension 1 (Band E3) or equivalent.)

Bachelor of	Length	2019 Selection Rank	OP	IB	Prerequisites
-------------	--------	---------------------	----	----	---------------

Creative arts and design

Art History and Curatorship	3 years	80	10	29	
Design	3 years	Interview + Portfolio			
Music	3 years	80	10	29	Entry to performance courses by audition. Applicants wishing to enrol in performance courses are advised to contact the School to arrange for an audition as soon as possible. E schoolofmusic@anu.edu.au or music.anu.edu.au/future-students/apply/performance-auditions
Visual Arts	3 years	Interview + Portfolio			

Engineering, computing and technology

Advanced Computing (Honours)	4 years	90	6	33	Advanced Maths. (ACT: Mathematical Methods (Major)/Further Mathematics (Major)/ Specialist Mathematics/Specialist Methods (Major), NSW: Mathematics or equivalent.)
Advanced Computing (Research and Development) (Honours)	4 years	99	1	42	Advanced Maths. (ACT: Specialist Mathematics (Major/Minor)/Specialist Methods(Major/Minor), NSW: Mathematics Extension 1.)
Applied Data Analytics	3 years	95	4	37	Assumed knowledge - Maths
Engineering (Honours)	4 years	90	6	33	Advanced Maths. (ACT: Mathematical Methods (Major)/Further Mathematics
Engineering (Research and Development) (Honours)	4 years	99	1	42	(Major)/Specialist Mathematics/Specialist Methods (Major), NSW: Mathematics or equivalent.)
Information Technology	3 years	80	10	28	Advanced Maths. (ACT: Mathematical Methods (Major)/Further Mathematics (Major)/Specialist Mathematics/Specialist Methods (Major), NSW: Mathematics or equivalent.)
Software Engineering (Honours)	4 years	87	7	31	Advanced Maths. (ACT: Mathematical Methods (Major)/Further Mathematics (Major)/Specialist Mathematics/Specialist Methods (Major), NSW: Mathematics or equivalent.)

Bachelor of	Length	2019 Selection Rank	OP	IB	Prerequisites
-------------	--------	---------------------------	----	----	---------------

Law and government

Criminology	3 years	80	10	29	
International Relations	3 years	90	6	33	
International Security Studies	3 years	90	6	33	
Laws (Honours)	4 years	98	2	40	
Public Policy	3 years	90	6	33	
Political Science	3 years	90	6	33	
Politics, Philosophy and Economics	3 years	96	3	38	Assumed knowledge - Maths

Maths and science

Biotechnology	3 years	80	10	29	Chemistry. (ACT: Chemistry (Major); NSW: Chemistry or equivalent.)
Environment and Sustainability	3 years	80	10	29	
Genetics	3 years	90	6	33	Chemistry. (ACT: Chemistry (Major); NSW: Chemistry or equivalent.)
Health Science ²	3 years	90	6	33	Assumed knowledge - Chemistry
Mathematical Sciences	3 years	95	4	37	ACT: Specialist Mathematics/ Specialist Methods (double major)/ Discrete Mathematics ANU/UC, NSW: Mathematics Extension 2 or equivalent.
Medical Science	3 years	90	6	33	Chemistry. (ACT: Chemistry (Major); NSW: Chemistry or equivalent.)
Philosophy (Honours) (PhB) - Science ²	4 years	99	1	42	
Philosophy (Honours) (PhB) - Bachelor of Science - NUS ^{1, 2}	4 years	99	1	42	
Science	3 years	80	10	29	
Science (Advanced) (Honours)	4 years	95	4	37	
Science (Psychology)	3 years	80	10	29	
Psychology (Honours)	4 years	95	4	37	

Bachelor of	Length	2019 Selection Rank	OP	IB	Prerequisites
-------------	--------	---------------------	----	----	---------------

Social science and humanities

Archaeological Practice	3 years	80	10	29
Arts	3 years	80	10	29
Asia-Pacific Affairs	4 years	82	9	30
Asian Studies	3 years	80	10	29
Classical Studies	3 years	80	10	29
Development Studies	3 years	80	10	29
European Studies	3 years	80	10	29
Languages	3 years	80	10	29
Middle Eastern and Central Asian Studies	3 years	80	10	29
Pacific Studies	3 years	80	10	29
Philosophy (Honours) (PhB) – Asia and Pacific ²	4 years	99	1	42

1 Joint degrees offered with the National University of Singapore (NUS).

2 There are compulsory additional selection criteria, check anu.edu.au/study/apply/anu-undergraduate-additional-selection-criteria

* **Selection Rank:** The ranking that tertiary admission centres and most universities actually use to assess admission to a program. A person's program Selection Rank can include their ATAR, any equity adjustments they are eligible for other contributions calculated on the basis of work experience or previous non-secondary study, portfolio assessments, results of the Special Tertiary Admissions Test, other supplementary tests, etc.

2019 Selection Rank required for consideration to enter in next intake: where a threshold minimum Selection Rank must be achieved to be considered for admission to a course or institution.

Note: Admission requirements may vary from year to year. Admission requirements for entry in 2020 may be subject to change. See programsandcourses.anu.edu.au for any changes in entrance requirements. Information correct at time of printing, January 2019.

Making Math and English mandatory from 2022

High-school Math and English courses will help equip you with the skills you need to excel during your time at ANU. Starting in 2022, participation in secondary Math and English will be mandatory for all applicants. Applicants will satisfy this requirement upon the successful completion of:

- > At least one English unit in at least one semester during Year 11 or Year 12; and,
- > At least one Math unit in at least one semester during Year 11 or Year 12.

FLEXIBLE DOUBLE DEGREES

Looking for a degree with your name on it? Design your own Flexible Double Degree by choosing from over 750 possible degree combinations.

Satisfy your intellectual curiosity and tailor your studies to prepare for your dream career.

- > Graduate with two qualifications.
- > You'll have a clear advantage when applying for jobs.
- > It takes less time than studying two undergraduate degrees separately.
- > You'll have the same full-time workload as a student studying a single undergraduate degree.

For more information on Flexible Double Degrees go to programsandcourses.anu.edu.au

Combine:

- > any two degrees within the Arts, Social Sciences, Business or Science group
- > a Bachelor of Laws with another degree within the Law group
- > a Bachelor of Engineering, Advanced Computing or Software Engineering with another degree within the Engineering and Advanced Computing group.



Ingrid Baader-Irwin

Flexible Double Degree, Bachelor of International Security Studies/ Bachelor of Development Studies

"My time at ANU has been filled with opportunities to engage and personally interact with my lecturers who have dedicated their time to tailoring the learning experience to every student. Studying International Security and Development Studies has allowed me to take a number of niche courses and build relationships with amazing teachers, who some how even manage to make exams fun. Through a number of unique teaching styles, from interactive seminars, interviews and debates to assessments that involved playing war games and running mock inquiries, I've gained invaluable practical skills experiences which take learning beyond the typical classroom."

Arts, Social Sciences, Business or Science

Four years full-time

Combine any two of the following degrees

Bachelor of	2019 Selection Rank
Accounting ²	87
Actuarial Studies ⁴	97
Applied Data Analytics	95
Archaeological Practice	80
Art History and Curatorship	80
Arts	80
Asian Studies	80
Biotechnology ^{4,5}	80
Business Administration	86
Classical Studies	80
Commerce ^{2,3}	86
Criminology	80
Design	A+C
Development Studies	80
Economics	87
Environment and Sustainability	80
European Studies	80
Finance ³	87
Genetics ^{4,5}	90
Information Technology ⁴	80
International Relations	90
International Security Studies	90
Languages	80
Mathematical Sciences ⁴	95
Medical Science ^{4,5}	90
Middle Eastern and Central Asian Studies	80
Music ¹	80
Pacific Studies	80
Public Policy	90
Political Science	90
Politics, Philosophy and Economics	96
Science	80
Science (Psychology)	80
Statistics ⁴	87
Visual Arts	A+C

Law

Five years full-time

Choose

Bachelor of	2019 Selection Rank
Laws (Hons)	98
and combine with one of the following degrees	
Accounting	87
Actuarial Studies ⁴	97
Applied Data Analytics	95
Archaeological Practice	80
Art History and Curatorship	80
Arts	80
Asian Studies	80
Biotechnology ⁴	80
Business Administration	86
Classical Studies	80
Commerce	86
Criminology	80
Design	A+C
Development Studies	80
Economics	87
Environment and Sustainability	80
European Studies	80
Finance	87
Genetics ⁴	90
Information Technology ⁴	80
International Relations	90
International Security Studies	90
Languages	80
Mathematical Sciences ⁴	95
Medical Science ⁴	90
Middle Eastern and Central Asian Studies	80
Music ¹	80
Pacific Studies	80
Public Policy	90
Political Science	90
Politics, Philosophy and Economics	96
Science	80
Science (Psychology)	80
Statistics ⁴	87
Visual Arts	A+C

Engineering or Advanced Computing

Five years full-time

Choose one of the following degrees

Bachelor of	2019 Selection Rank
Advanced Computing (Hons) ⁴	90
Advanced Computing (R&D) (Hons) ⁴	99
Engineering (Hons) ⁴	90
Engineering (R&D) (Hons) ^{4,6}	99
Software Engineering (Hons) ⁴	87
and combine with one of the following degrees	
Accounting ⁶	87
Actuarial Studies ⁴	97
Applied Data Analytics	95
Archaeological Practice ⁶	80
Arts	80
Art History and Curatorship ⁶	80
Asian Studies ⁶	80
Biotechnology ^{4,6}	80
Business Administration	86
Classical Studies ⁶	80
Commerce	86
Criminology ⁶	80
Design	A+C
Development Studies ⁶	80
Economics	87
Environment and Sustainability	80
European Studies ⁶	80
Finance ³	87
Genetics ^{4,6}	90
Information Technology ⁵	80
International Relations ⁶	90
International Security Studies	90
Languages	80
Mathematics Sciences ⁴	95
Medical Science ^{4,6}	90
Music ^{1,6}	80
Pacific Studies	80
Politics Philosophy and Economics ⁶	96
Political Science ⁶	90
Public Policy ⁶	90
Science	80
Science (Psychology)	80
Statistics ⁴	87
Visual Arts ⁶	A+C

A+C: Minimum selection rank + conditions apply including interview/portfolio.

See soa.anu.edu.au/apply for more information.

1 Entrance to performance courses are by audition. E schoolofmusic@anu.edu.au

2 Commerce with an accounting major cannot be combined with Bachelor of Accounting.

3 Commerce with a finance major cannot be combined with Bachelor of Finance.

4 Program includes another prerequisite in addition to minimum selection rank. See page 16.

5 The degrees of Biotechnology, Genetics and Medical Sciences cannot be combined with one another. The degrees of Advanced Computing and Software Engineering cannot be combined with Information Technology.

6 The Bachelor of Engineering (R&D) (Hons) cannot be combined with any of these degrees.

UNDERGRADUATE RESEARCH DEGREES

Delve into your interests while developing the systematic research skills needed for problem-solving, discovery and innovation.

Undergraduate Research Degrees are challenging study programs that give you opportunities for intensive one-on-one guidance from world-leading academics, exclusive placements in research organisations, travel and teamwork.

- > You will have the same full-time workload as a student studying a single undergraduate degree.
- > You will graduate with skills that are in global demand across government, non-government and not-for-profit, business, consultancy and academic sectors.

Skills to get you ahead

The employment landscape is always changing, especially as technology becomes increasingly sophisticated and prevalent in the workplace.

Traditional jobs are disappearing or changing, while new jobs are emerging in response to contemporary needs.

By choosing to undertake an Undergraduate Research Degree you will develop timeless and highly transferable skills that work across disciplines. In particular, you will develop high-order problem-solving skills that employers are demanding the world over.

These skills will let you work in and across any industry which means that when you graduate, you will be uniquely placed to direct the course of your career.



Hillary McArthur

Bachelor of Philosophy (Honours) (PhB) - Science

Hillary completed her PhB (Hons) Science in 2015 and is currently in her third year of postgraduate Medicine at ANU. She has just moved to Bega for a year of clinical experience.

Hillary says one of the best aspects about her degree was the flexibility it allowed.

“When I started my degree I focused mainly on biology and genetics, and as I started to explore all the options at ANU I branched out into ethics and science communication.”

She says that, as her degree was research focused, the fact that the academics were so approachable meant that she could contribute to a range of research.

“I was able to get hands-on experience researching parasites, science communication, diabetes, plants and cancer. The openness of ANU staff and the freedom I had to explore anything I was interested in allowed me to delve into all things science that I love.”

“I was blown away by the fact that extremely important professors would happily chat with me, and would constantly go out of their way to include you in their research projects.”

Hillary advises future students to make the most of talking to lecturers and staff for any advice.

“They’re all there for you to learn and get the most out of your time at ANU, and are really eager to help! There are lots of opportunities to try hands on research and I found this by far the best way to learn about how science really works, plus you’re literally contributing to new knowledge. It’s awesome to see what goes on in a lab and all the discussions and team work that’s involved to get a result.”

Choose the Undergraduate Research Degree that inspires and challenges you.

Bachelor of Advanced Computing (Research and Development) (Honours)

2019 selection rank 99

A unique, interdisciplinary degree that will prepare you to be a future leader in the information and communications technology revolution.

You will learn advanced computing techniques and have the opportunity to complete a unique major, while developing exceptional professional skills in areas of entrepreneurship and management.

Bachelor of Engineering (Research and Development) (Honours)

2019 selection rank 99

For high-achieving students interested in becoming innovators and future leaders in engineering.

This degree program combines the fundamental engineering courses with the opportunity to be immersed in research groups covering mechatronics, solar energy, materials and manufacturing.

When you graduate, you will be equipped to solve some of the world's greatest challenges.

Bachelor of Finance, Economics and Statistics (Honours)

2019 selection rank 99

An elite program that integrates the three disciplines so you can develop a deep understanding of these fields.

You will be guided by a mentor throughout your studies, and when you graduate you will be recognised for your exceptional aptitude for quantitative financial analysis, conceptual thinking about claims on resources using statistics, problem-solving combining economic intuition and mathematical techniques.

Bachelor of Science (Advanced) (Honours)

2019 selection rank 95

A flexible program that you can tailor according to the scientific disciplines that interest you while working in a community of world-leading academics.

You will be exposed to advanced concepts and research possibilities leading to a broad range of careers when you graduate.

Bachelor of Philosophy (Honours) (PhB)/Bachelor of Science (Honours) (NUS)

2019 selection rank 99

The PhB(Hons)/BSc(Hons) can be taken in three majors (Chemistry, Mathematics or Physics) and is offered as a joint single degree program by the National University of Singapore (NUS), and the Colleges of Science at ANU. This highly selective program provides a challenging course of study for students who have a strong interest in and aptitude for graduate research work.

The PhB is an ideal path to take if you are aiming for a career in research or thinking of joining the workforce directly.

Bachelor of Philosophy (Honours) (PhB) Degrees

2019 selection rank 99

Students will specialise in

- > Science
- > Asia and the Pacific

FLEXIBLE VERTICAL DOUBLE DEGREES

Build your undergraduate and postgraduate qualifications into one study program while saving time (and money).

In a Flexible Vertical Double Degree (FVDD) you can study a Bachelor and a Master degree in a shorter time.

An FVDD program usually takes four years to complete (5.5 if combining degrees within the Law group) and offers you time and cost savings when compared with studying a Bachelor and a Master degree separately.

Save time and money

You'll get credit in your Master degree for related areas of study in your Bachelor degree, saving you time and money when compared with studying a Bachelor and Master degree separately.

Specialise or go broad

Study a Master degree in the same field as your Bachelor degree to develop depth of knowledge and specialist skills; or take your Master degree in a different field to broaden your knowledge and develop your transferrable skills.

Stand out from the crowd

Your Master qualification can help you stay competitive in the global jobs market.

Exceptions

Medicine, four-year Advanced degrees or those with built-in Honours, as well as some Master degrees cannot be combined in an FVDD due to their unique degree structures.

For more information on FVDDs, go to anu.edu.au/study/apply/flexible-vertical-double-degree-applications

Vertical Law programs

If you're just shy of the marks you need to study Law at ANU, an FVDD gives you another pathway into legal practice when you study an eligible Bachelor degree combined with the ANU Juris Doctor.

The Juris Doctor is a challenging and rewarding Master-level degree. If you're prepared to do the hard yards to maintain the required GPA to enter this program, you'll get to graduate from one of Australia's top law schools and be ready to launch a stellar career.



Students walking through the Hedley Bull Centre

FVDD COMBINATIONS

Undergraduate program options

Business, Humanities & Social Sciences

Full-time 4 years

Bachelor options »

Archaeological Practice
Art History & Curatorship
Arts
Asian Studies
Business Administration
Classical Studies
Commerce
Criminology
Development Studies
Economics
European Studies

International Relations
International Security Studies
Languages
Middle Eastern & Central Asian Studies
Music¹
Policy Studies
Political Science
Politics, Philosophy & Economics
Statistics*
Visual Arts*

Science

Full-time 4 years

Bachelor options »

Biotechnology*
Environment & Sustainability
Genetics*
Health Science
Science

Law

Full-time 5.5 years

Bachelor options »

Archaeological Practice
Art History & Curatorship
Arts
Asian Studies
Classical Studies
Criminology
Development Studies
European Studies

International Relations
International Security Studies
Languages
Music¹
Political Science
Politics, Philosophy
& Economics
Visual Arts*

Master degree options

Opt in & Transition

Business, Humanities &
Social Sciences Master
options

Archaeological & Evolutionary Science
Asian and Pacific Studies
Culture, Health & Medicine
Demography
Diplomacy
Entrepreneurship & Innovation
Environment
General & Applied Linguistics
International Management
International Relations
Innovation & Professional Practice
Leadership
Management

Marketing Management
Public Health
Strategic Studies
Translation

Science Master options

Environment
Innovation and Professional Practice
Public Health

Law Master options

Juris Doctor

¹ Entrance to performance courses are by audition. E schoolofmusic@anu.edu.au
» Refer to table starting on page 16 for minimum selection ranks.

* Program includes another prerequisite in addition to selection rank.
See table starting on page 16.

PLAN YOUR DEGREE

You can tailor your studies to suit your interests or careers goals through your majors, minors and specialisations.

What's a major?

A major is an area within a program that allows in-depth study in a particular field. A major usually consists of a set number of related courses. Majors at ANU require 48 units of study. Typically, each course is worth six units.

Then, what's a minor?

As the name suggests, a minor has fewer requirements to fulfil than a major, in terms of points and compulsory courses. Minors at ANU require 24 units of study – so typically four courses.

And a specialisation?

Similar to a minor, a specialisation is an area of study with its own courses that are allowed to be taken in conjunction with a specific related major.

- > For more information on majors, minors and specialisations go to programsandcourses.anu.edu.au



Students in the School of Music state of the art Sound Recording and Music Technology Studio

Some of the exciting Majors you can study include:

Business and economics

- > Accounting
- > Applied Statistics
- > Asian Capital Markets
- > Business Information Systems
- > Capital Markets
- > Corporate Sustainability
- > Economic Studies
- > Finance
- > International Business
- > Management
- > Marketing
- > Probability and Stochastic Processes
- > Quantitative Finance
- > Statistical Data Analytics
- > Statistics
- > Theoretical Statistics

Creative arts and design

- > Animation and Video
- > Art History and Theory
- > Ceramics
- > Ceramics Design Arts
- > Composition
- > Composition for Film and Video
- > Games
- > Furniture
- > Glass
- > Glass Design Arts
- > Gold & Silversmithing
- > Hybrid Art Practice
- > Jewellery and Object
- > Music
- > Music Technology
- > Musicology
- > Painting
- > Performance
- > Photomedia
- > Printmedia and Drawing
- > Screen Studies
- > Sculpture
- > Sculpture and Spatial Practice
- > Textiles
- > Textiles Design Arts

Engineering, computing and technology

- > Advanced Intelligent Systems
- > Biomedical Systems
- > Computer Systems
- > Cyber Security
- > Data Science
- > Electronic Systems
- > Electronic and Communication Systems
- > Engineering Science
- > Environmental Systems
- > Information Systems
- > Innovation and Professional Practice
- > Intelligent Systems
- > Mechanical and Material Systems
- > Mechatronic Systems
- > Photonic Systems
- > Renewable Energy Systems
- > Research and Development
- > Software Development
- > Sustainable Energy Systems

Law and government

- > Criminology
- > Political Science

Maths and science

- > Astronomy and Astrophysics
- > Biochemistry
- > Cell & Molecular Biology
- > Chemistry
- > Computer Science
- > Earth Science
- > Environmental Science
- > Environmental Systems
- > Evolution, Ecology and Organismal Biology
- > Geography
- > Human Biology
- > Interdisciplinary Science
- > Marine Science
- > Mathematical Economics
- > Mathematical Finance
- > Mathematical Modelling
- > Mathematics
- > Physics
- > Psychology
- > Quantitative Biology
- > Resource and Environmental Management
- > Science Communication
- > Statistics
- > Sustainability Studies
- > Water Science

Social sciences and humanities

- > Ancient Greek
- > Ancient History
- > Anthropology
- > Arabic
- > Archaeology
- > Asia and Pacific Culture, Media and Gender
- > Asia-Pacific International Relations
- > Asia-Pacific Politics
- > Asia-Pacific Security Studies
- > Asian History
- > Asian Studies
- > Australian Indigenous Studies
- > Biological Anthropology
- > Chinese Language
- > Chinese Studies
- > Contemporary Europe
- > Development Studies
- > Digital Humanities
- > Economic Studies
- > English
- > Environmental Studies
- > French Language and Culture
- > Gender, Sexuality and Culture
- > German Language and Culture
- > Global Security
- > Hindi Language
- > History
- > Human Evolutionary Biology
- > Human Rights
- > India Studies
- > Indonesian Language
- > Indonesian Studies
- > International Communication
- > International Relations
- > Italian Language and Culture
- > Japanese Language
- > Japanese Linguistics
- > Japanese Studies
- > Korean Language
- > Korean Studies
- > Latin
- > Latin American Studies
- > Linguistics
- > Middle Eastern and Central Asian Studies
- > Northeast Asian Studies
- > Pacific Studies
- > Peace and Conflict Studies
- > Persian
- > Philosophy
- > Political Science
- > Sanskrit Language
- > Sociology
- > Southeast Asian Studies
- > Spanish
- > Technology, Networks and Society
- > Thai Language
- > Vietnamese Language
- > War Studies
- > Year in Asia

SUPPORT SERVICES

Make the most of your time here by taking advantage of the support on offer.

Academic Skills and Learning Centre

This service can help you to develop the academic and communication skills on which all academic work is based. You can make one-on-one appointments, attend workshops or just drop-in, while taking advantage of the many self-help resources the centre provides.

- > anu.edu.au/students/contacts/academic-skills-learning-centre

SET4ANU

This is a free orientation program to help new students make the transition to life at ANU. When you sign up to the program, you'll be assigned a senior student who will introduce you to other students studying similar degrees. They will also help with finding your way around campus, show you how to use ANU online systems and sign up for tutorials, the gym and clubs and societies.

- > anu.edu.au/students/information-for/new-students/set4anu-program

ANU Counselling Centre

The Counselling Centre is a free and confidential service for all currently enrolled ANU students. There are also group programs for common issues, public seminars, and a peer support walking program.

- > anu.edu.au/students/health-wellbeing/counselling
- > anu.edu.au/students/healthy-safety-wellbeing/counselling
- > **ANU Crisis Support Line**
5pm–9am weekdays, 24/7 weekends and public holidays.
Phone (voice calls only): 1300 050 327
Text: 0488 884 170

Social support

Being at uni isn't just about studying. You can make new friends and strike a balance between studying hard and having fun at almost 200 ANU clubs and societies. From sports, to cultural activities, to environmental activism, there's a community ready and waiting for you.

- > anusa.com.au
- > anu.edu.au/study/student-experience

Health and Medical Facilities

The campus health services provider is the National Health Co-Op (NHC) which operates a state of the art health and wellness clinic.

- > nhc.coop

➔ ANU Careers Centre

The Careers team can equip you with the knowledge and tools to successfully navigate your future career. Learn to plan your career using career target strategies, personal and professional development tools. You can drop in for a one-on-one chat or use the CareerHub to look for a job, work experience and internship opportunities; online career planning; application resources; seminars; workshops; employer presentations and careers events.

- > anu.edu.au/students/careers-opportunities/careers

➔ ANU Access and Inclusion

The Access and Inclusion team is there for you if you have a disability or medical condition, or if you're a primary carer to someone with a disability. They'll help you get the most out of your time at ANU by giving you support and making adjustments that will minimise the impact of disability on your education. They also provide diversity support and training.

- > anu.edu.au/students/health-wellbeing/diversity-inclusion



TUITION, FEES & FINANCIAL ASSISTANCE

Australian domestic undergraduate students are eligible for a Commonwealth Supported Place (CSP). This means that your tuition fees are subsidised by the Australian Government.

Tuition fees

University tuition fees in Australia are standardised for Australian domestic students, regardless of which university you attend.

For the most up-to-date information about university tuition fees in Australia for domestic students, go to studyassist.gov.au

Fee help and financial assistance

Financial help is available to eligible students from the Australian Government through various schemes.

HECS-HELP is a loan program to help eligible students to pay their student contribution. For details head to studyassist.gov.au

Youth Allowance is financial help available to eligible full-time students aged between 16 and 24 years of age. For details go to humanservices.gov.au/individuals/services/centrelink/youth-allowance

ABSTUDY is available to eligible Aboriginal and Torres Strait Islander students. For details go to humanservices.gov.au/customer/services/centrelink/abstudy

SA-HELP is available to enable eligible students at ANU and other Australian universities to defer paying the Student Services and Amenities Fee (SA fee).

For details go to studyassist.gov.au/help-loans/sa-help

For up-to-date information about the Student Amenities Fee, anu.edu.au/students/program-administration/costs-fees/services-amenities-fee



Walking to class in Crisp Building

CONTACT US

The Australian National University

anu.edu.au/contact-anu

Connect with us



facebook.com/TheAustralianNationalUniversity



youtube.com/ANUexperience



twitter.com/ANU_Events



instagram.com/ouranu

CRICOS Provider Number 00120C

Campus tours

Tours are free and can be booked between 10am-5pm Monday to Friday (excluding public holidays). Bookings are essential, please visit anu.edu.au/campus-tours