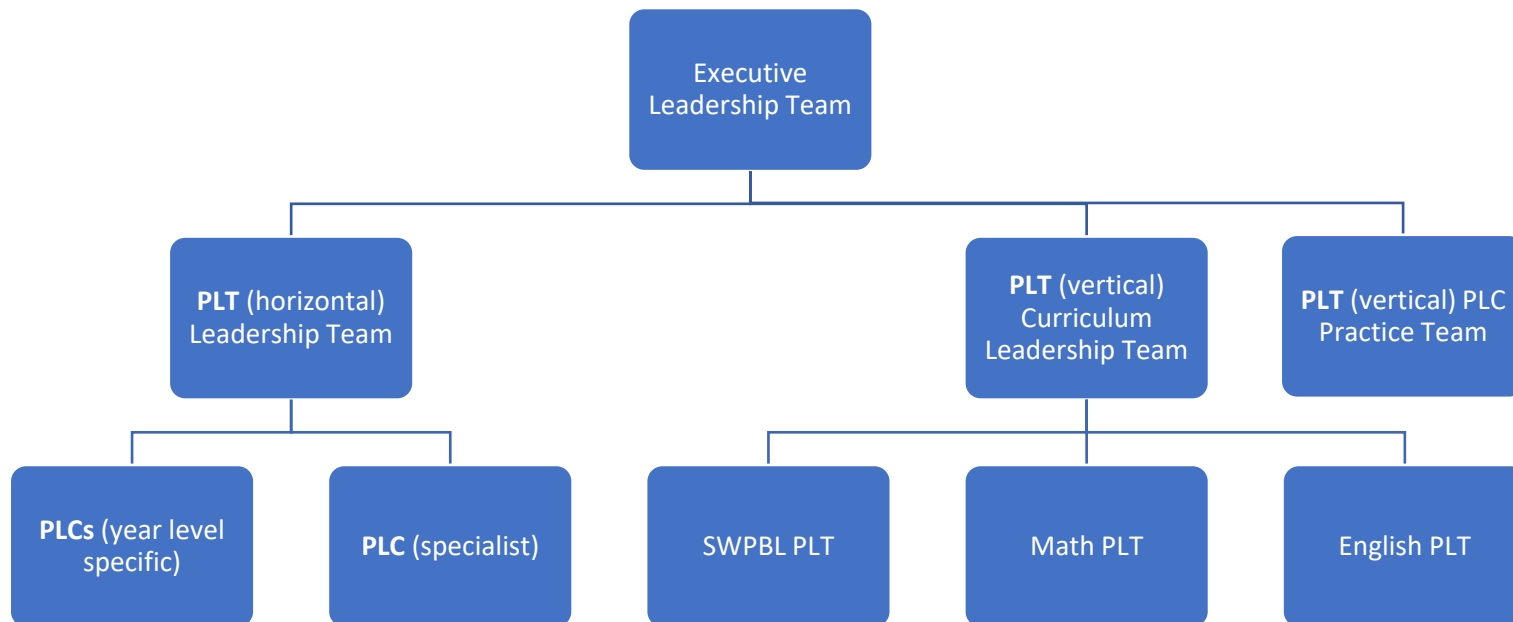


## Continuous Improvement Structure



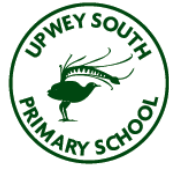
Continuous Improvement Teams	Team Members	Summary of Intent
<b>Executive</b> Leadership Team	Principal, Assistant Principal, Leading Teacher	Provide strategic direction which drives overall school improvement.
<b>PLT</b> (horizontal) Leadership Team	Principal, Assistant Principal, Year Level Leaders, Specialist Leader	Operational aspects and leadership of respective PLCs, through the lens of school-wide connections.
<b>PLT</b> (vertical) Curriculum Leadership Team	Principal, Leading Teacher, SWPBL Leader, Math Leader, English Leader	A clear and purposeful focus upon curriculum improvement at a school-wide level, achieved through building staff capacity.
<b>PLT</b> (vertical) PLC Practice Team	Principal, Assistant Principal, Leading Teacher, PLC Leader	Provides protocols and frameworks which promote school-wide consistency of practice, builds data informed practices.

- **Professional Learning Team (PLT)**- refers to a vertical team, consisting of learners representing horizontal communities (*formerly known as curriculum/culture teams*)
- **Professional Learning Community (PLC)**- refers to a horizontal community of learners (*formerly known as year level teams*)



## Professional Learning Communities (PLCs) Structure

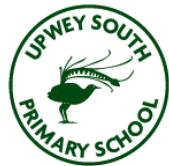
Professional Learning Community	PLC Members	PLC Leader
Foundation	<ul style="list-style-type: none"><li>• Holly Peters- <b>Class FA</b></li><li>• Lisa Dam- <b>Class FB</b></li><li>• Amy Ryde- <b>Class FC</b></li></ul>	Holly Peters
Year One	<ul style="list-style-type: none"><li>• Julie Hall- <b>Class 1A</b></li><li>• Andrew McFarlane- <b>Class 1B</b></li></ul>	Julie Hall
Year Two	<ul style="list-style-type: none"><li>• Bec Crawford- <b>Class 2A</b></li><li>• Zoe Bates- <b>Class 2B</b></li></ul>	
Year Three/Four	<ul style="list-style-type: none"><li>• Mel Rowe (0.4FTE)/ Michelle Wright (o.6FTE)- <b>Class 34A</b></li><li>• Lachlan Prasad- <b>Class 34B</b></li><li>• Bec Calvert (nee: Tilley)- <b>Class 34C</b></li></ul>	Bec Calvert
Year Five/Six	<ul style="list-style-type: none"><li>• Krista Carpenter- <b>Class 56A</b></li><li>• Melissa Woollard- <b>Class 56B</b></li><li>• Stacey Bowles- <b>Class 56C</b></li></ul>	Stacey Bowles
Specialist	<ul style="list-style-type: none"><li>• Penelope Lang- <b>Performing Arts</b></li><li>• Danielle Haines- <b>Visual Arts</b></li><li>• Justin Scicluna- <b>Health/Physical Education</b></li><li>• Hayley Oliver- <b>Science</b></li><li>• Amanda Oakley- <b>LOTE Auslan (F-2)</b></li><li>• Shar Stjerne- <b>LOTE Auslan (3-6)</b></li></ul>	Penelope Lang



**UPWEY SOUTH**  
Primary School

## School-Wide Structure of Support

School-Wide Structure of Support	Support Staff
<b>Executive Leadership Team</b>	<ul style="list-style-type: none"><li>• Damien Kitch- <b>Principal</b></li><li>• Llewela Humphries- <b>Acting Assistant Principal</b></li><li>• Melinda Rowe- <b>Acting Leading Teacher (0.6FTE)</b></li></ul>
<b>Administration Team</b>	<ul style="list-style-type: none"><li>• Janet Young- <b>Business Manager</b></li><li>• Janette Clarke- <b>Office Manager</b></li><li>• Daniel Nisi- <b>Technical Support Officer</b></li></ul>
<b>Education Support Team</b>	<ul style="list-style-type: none"><li>• Meagan Tustin- <b>Learning Support Officer</b></li><li>• Nicole Lane- <b>Learning Support Officer</b></li><li>• Amanda Oakley- <b>Learning Tutor (F-2)</b></li><li>• Shar Stjerne- <b>Learning Tutor (3-6)</b></li><li>• Carvin Winans- <b>School Counsellor</b></li></ul>



**UPWEY SOUTH**  
Primary School

## Professional Learning Teams (PLTs) Structure

Professional Learning Team	PLT Leader	Executive Support
School-Wide Positive Behaviours for Learning (SWPBL)	Stacey Bowles	Llewela Humphries
Mathematics	Damien Kitch/ Julie Hall	Damien Kitch Melinda Rowe
English	Bec Calvert	Melinda Rowe
PLC Practice	Zoe Bates	Damien Kitch Llewela Humphries Melinda Rowe