

Your task is to sort the waste item labels given to you into the following streams.

Waste hierarchy at Brentwood

Commingled Recycling	Paper & Carboard Recycling	Composting	Old Pens/Mobiles Collection	Old Textiles & Electrical hub	Soft Plastics bin	General Waste
Near the canteen & gym	In classrooms	In the Green Space	In the library	Near Staff carpark	Local supermarkets	Classrooms & courtyards
						
						

How would you correctly dispose of this item?

**Pen, marker, texta,
mechanical pencil***

Collection box in the library



All types of pens, markers, textas and mechanical pencils are accepted

How would you correctly dispose of this item?

Aluminium Can



Commingled recycling bin near canteen



*** Please empty the contents before throwing the can in the bin**

How would you correctly dispose of this item?

Old shoes



Old textiles hub near staff carpark



*** Visit SCR Recycling to learn more about these collection bins**

How would you correctly dispose of this item?

Plastic bags

Can not be recycled at school,

Can be recycled at a local supermarket



Want to know what happens to the soft plastics collected?

<https://youtu.be/NEKa6rjzWiM>

How would you correctly dispose of this item?

Old Mobile Phones



Collection box in the library



*** Old mobile phones, batteries and chargers are accepted**

How would you correctly dispose of this item?

Newspaper



Paper recycling bin in classrooms



This bin should be used only for paper and cardboard

How would you correctly dispose of this item?

Pencil shavings



General Waste bin



Please don't place pencil shavings in the paper recycle bin

How would you correctly dispose of this item?

Eraser



General waste bin



How would you correctly dispose of this item?

Deodorant



Commingled recycling bin near canteen



Empty the contents of the container before throwing it away

How would you correctly dispose of this item?

Zip-lock bags



Can not be recycled at school,

Can be recycled at a local supermarket



Try brining 'nude food' so you don't end up using soft plastics

How would you correctly dispose of this item?

Metal Water bottle



**Commingled recycling bin near
canteen**



How would you correctly dispose of this item?

Empty Noodles cup



General Waste bin



The paper lid can be placed in paper recycle bin

How would you correctly dispose of this item?

Empty plastic bottle



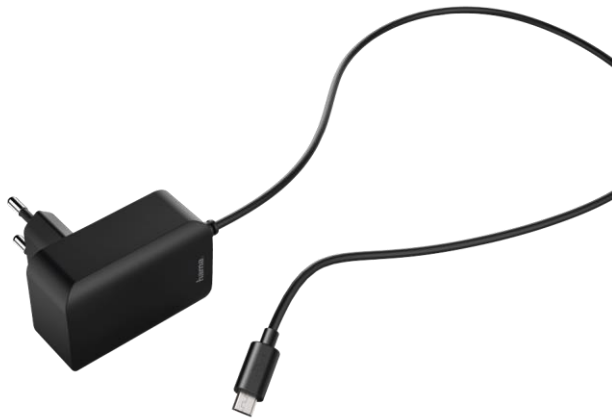
Commingled recycling bin near canteen



Empty the contents of the bottle before throwing it away in the bin

How would you correctly dispose of this item?

Charger



Collection box in the library



How would you correctly dispose of this item?

Broken laptop

**Old electricals hub near staff
carpark**



All electrical items with a cord can be placed in this hub

How would you correctly dispose of this item?

Banana peel



Compost bin in the Green Space



How would you correctly dispose of this item?

Plastic cup



Commingled recycling bin near canteen



Do the scrunch test. If the plastic item bounces back when you scrunch it, then it can be recycled.

How would you correctly dispose of this item?

Styrofoam cup



General Waste bin



Please bring your own mug to Salvos breakfast instead of using this cup

How would you correctly dispose of this item?

Wrapping



Can not be recycled at school,

Can be recycled at a local supermarket



How would you correctly dispose of this item?

Broken calculator



**Old electricals hub near staff
carpark**



How would you correctly dispose of this item?

Lead Pencil



General Waste bin



Normal lead pencils can't be recycled. Only mechanical pencils can be recycled.

How would you correctly dispose of this item?

Left over food/meat



General Waste bin



Left over meat should not be placed in Compost bin

How would you correctly dispose of this item?

Big M



**Commingled recycling bin near
canteen**



Milk cartons are also accepted currently, but this is going to change in future

How would you correctly dispose of this item?

Plastic straws



General Waste bin



Plastic straws **CAN'T** be recycled are bad for our marine ecosystems.
Please REFUSE straws.

How would you correctly dispose of this item?

Leftover Fruit

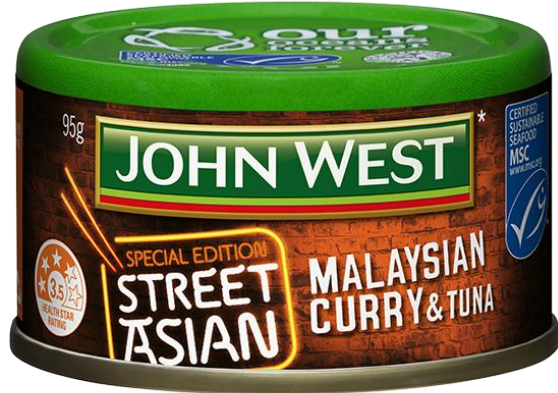


Compost bin in the Green Space



How would you correctly dispose of this item?

Metal container



Commingled recycling bin near canteen



Empty the contents of the container before throwing the container away

How would you correctly dispose of this item?

Leftover food



Compost bin in the Green Space



How would you correctly dispose of this item?

Gloves



General Waste bin



Gloves can't be recycled using the bins we have at Brentwood. Please don't place them in paper recycle bins.

How would you correctly dispose of this item?

Paper towel



General Waste bin



Paper towel can't be recycled.
Please don't place it in paper recycle bins.

How would you correctly dispose of this item?

Old belt

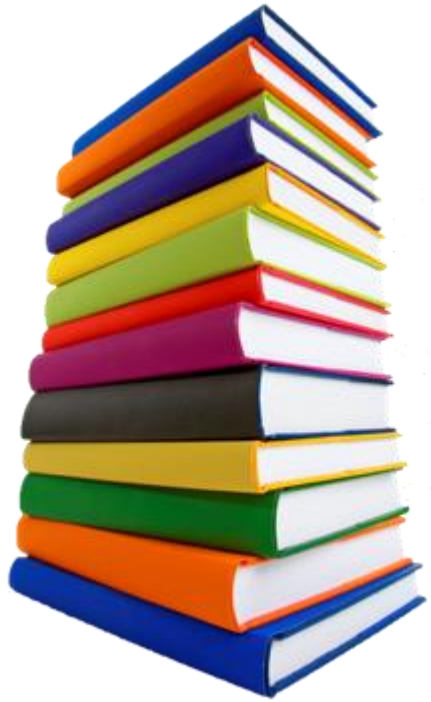


Old textiles hub near staff carpark



How would you correctly dispose of this item?

Old textbooks



Paper recycling bin



Hardback textbooks can not be recycled.

Please donate your old textbooks or sell them at <https://ilovebooks.com.au/sell/>

How would you correctly dispose of this item?

Laptop battery



Collection box in the library



How would you correctly dispose of this item?

Old School uniform



Old textiles hub near staff carpark



How would you correctly dispose of this item?

Aluminium foil



Commingled recycling bin near canteen



Aluminium foil needs to be crunched into a ball to be able to recycle.
Flat aluminium foil can't be sorted into the right stream at the recycling station

How would you correctly dispose of this item?

Plastic wrapping

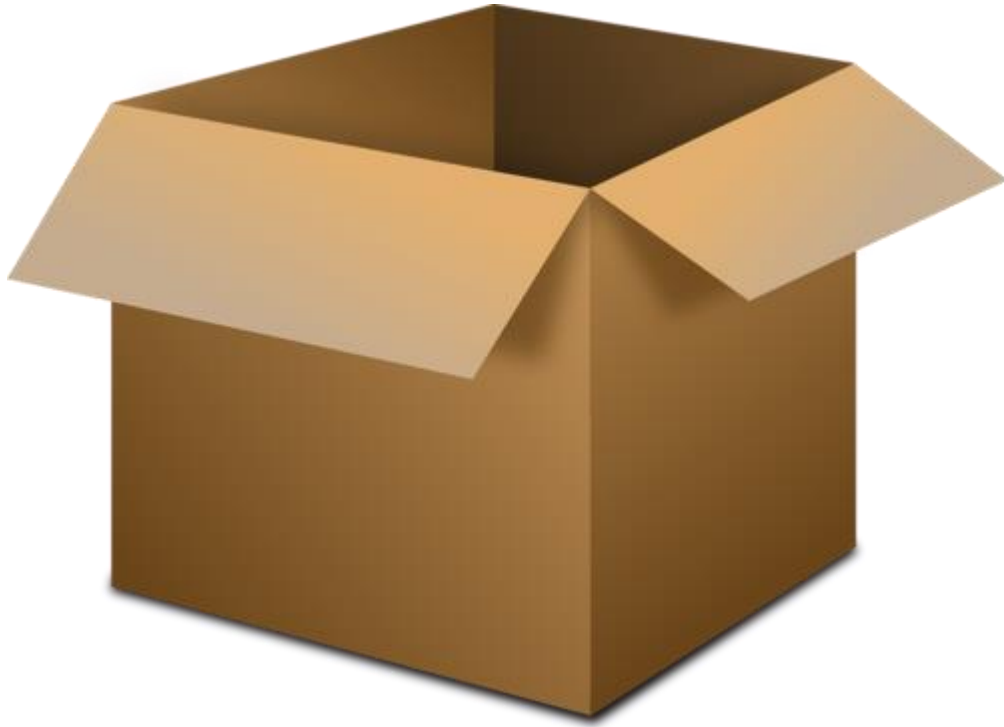
Can not be recycled at school,

Can be recycled at a local supermarket



How would you correctly dispose of this item?

Cardboard box



Paper recycling bin



How would you correctly dispose of this item?

Coffee cup



General Waste bin



Recent update: Coffee cups AND LIDS can't be recycled.
Please use your own mug, instead of this disposable cup.

How would you correctly dispose of this item?

Old school bag



Old textiles hub near staff carpark



How would you correctly dispose of this item?

Empty cereal box



Paper recycling bin



How would you correctly dispose of this item?

Old school jumper

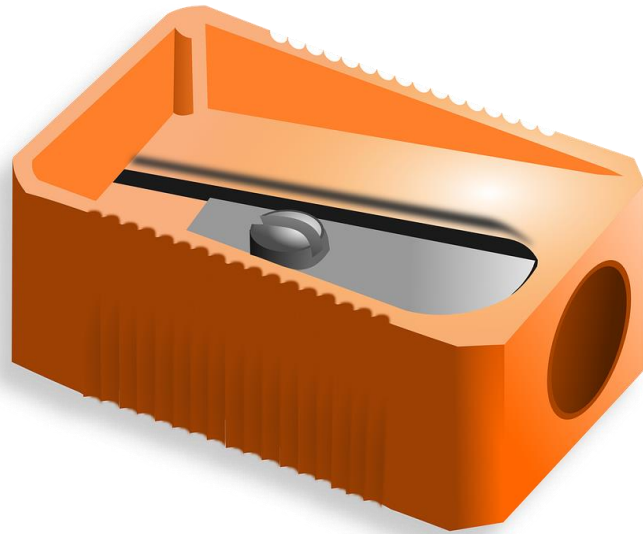


Old textiles hub near staff carpark



How would you correctly dispose of this item?

Pencil sharpener



General Waste bin



How would you correctly dispose of this item?

Broken Ruler (metal/wooden)



General Waste bin



How would you correctly dispose of this item?

Glass bottle



**Commingled recycling bin near
canteen**



How would you correctly dispose of this item?

Tissues



General Waste bin



Paper towel and tissues can't be recycled.
Please don't place them in paper recycle bins.

How would you correctly dispose of this item?

Used batteries

Collection box in the library



How would you correctly dispose of this item?

Styrofoam container



General Waste bin



**Styrofoam containers can't be recycled using the bins at Brentwood.
Please use alternate items instead.**

How would you correctly dispose of this item?

Tea bag



Compost bin in the Green Space



How would you correctly dispose of this item?

Empty Pizza box



Paper recycling bin



Please remove greasy remains inside the pizza box before placing it in the paper recycling bin

How would you correctly dispose of this item?

Glue stick



General Waste bin



How would you correctly dispose of this item?

Scissors



General Waste bin



How would you correctly dispose of this item?

Paper clips



General Waste bin



How would you correctly dispose of this item?

Bulldog clip



General Waste bin



Unfortunately, this can't be recycled. Consider reusing it.

How would you correctly dispose of this item?

Balloons



General Waste bin



How would you correctly dispose of this item?

Liquid paper correction pen



General Waste bin



How would you correctly dispose of this item?

Box file



Paper recycling bin



**Please separate the metals parts in the file before placing it in the bin.
The metal parts can go in the commingled recycling bin**

How would you correctly dispose of this item?

Plastic wrapping

Can not be recycled at school,

Can be recycled at a local supermarket



Place it in the general waste bin if you are unable to recycle

How would you correctly dispose of this item?

Broken tennis ball



General Waste bin



How would you correctly dispose of this item?

Used socks



Old textiles hub near staff carpark



Torn and worn items are also accepted in SCR textile hub

How would you correctly dispose of this item?

Correction tape



General Waste bin



How would you correctly dispose of this item?

Broken headphones



**Old electricals hub near staff
carpark**



How would you correctly dispose of this item?

Broken mug



General Waste bin



How would you correctly dispose of this item?

Notebooks



Paper recycling bin



How would you correctly dispose of this item?

Handbag



Old textiles hub near staff carpark



How would you correctly dispose of this item?

Plastic bag

Can not be recycled at school,

Can be recycled at a local supermarket



Reuse this bag.



How would you correctly dispose of this item?

Sticky notes



Paper recycling bin



Do you have a solution?

- You may have realised from this activity that Brentwood has seven different streams to sort your wastes, but we don't have a system to collect 'soft plastics' yet. Does your mentor group have any suggestions on how to introduce a soft plastics recycling stream at Brentwood and run it? Please post your suggestions on the Padlet.

