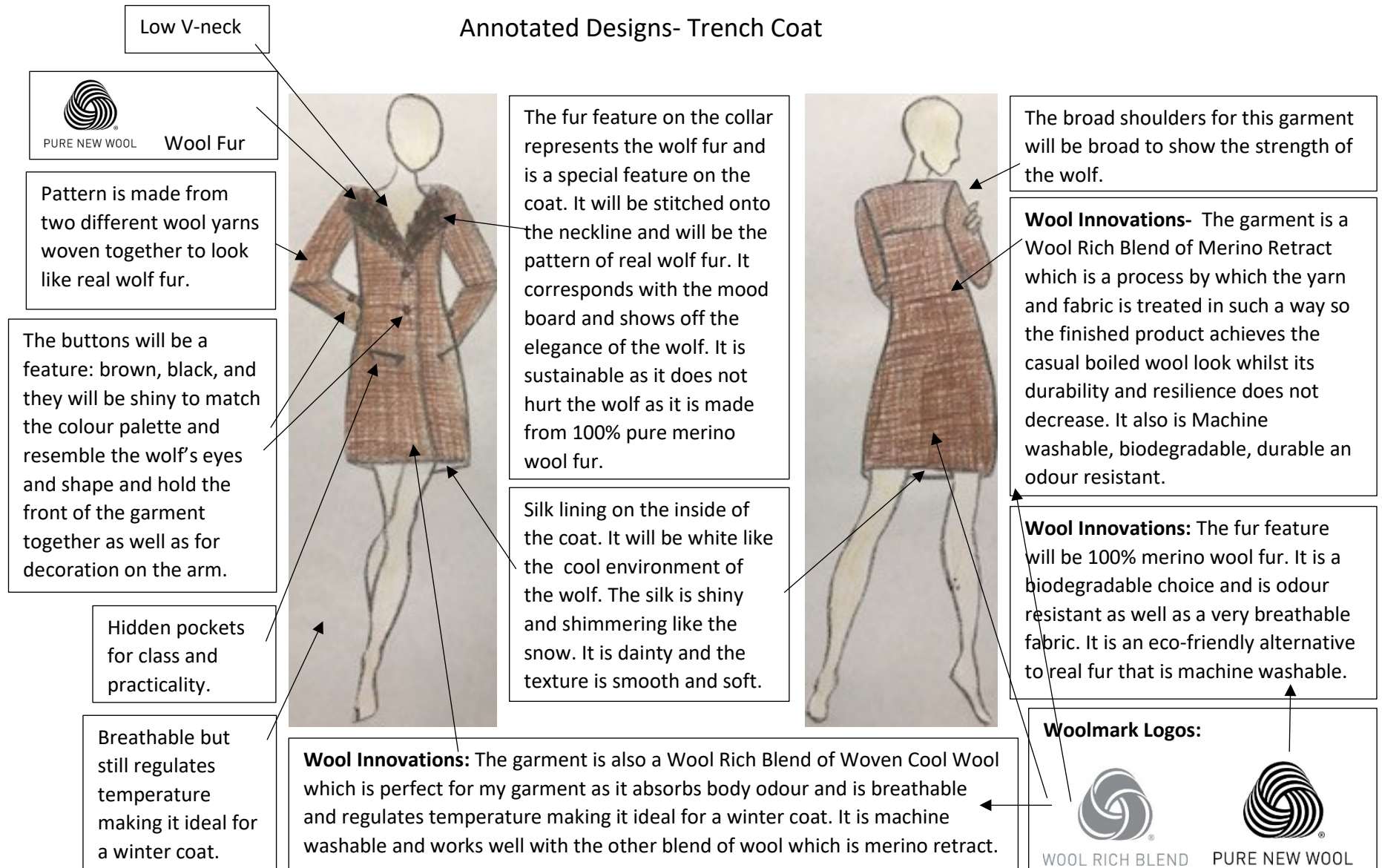
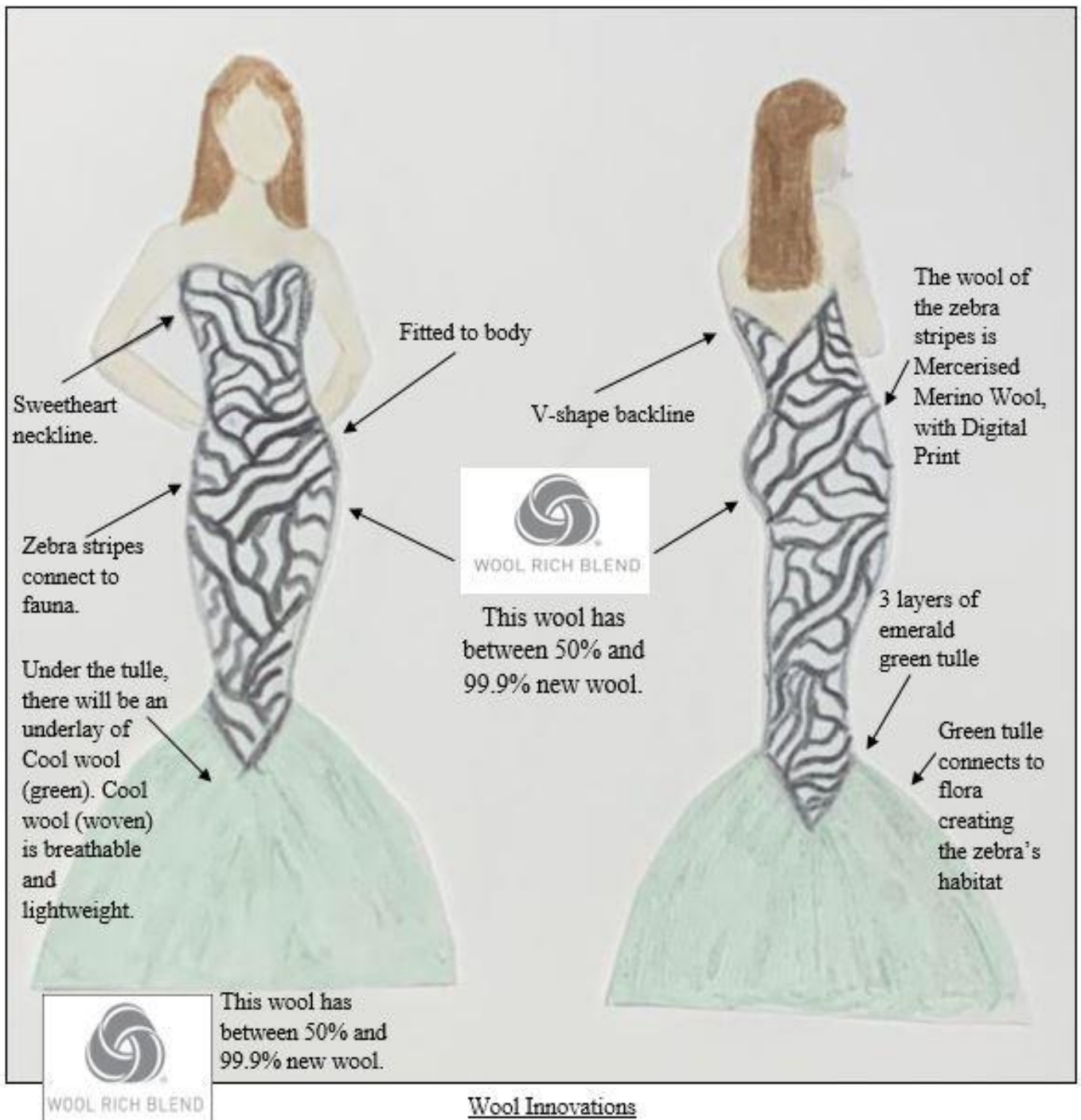


WOLVES IN WOOL

Annotated Designs- Trench Coat



Design Inspired by a Zebra



Wool Innovations

Mercerised Merino (woven) wool is soft and comfortable. Mercerised Merino wool has a natural look that appears to create a 'cashmere-like' or 'silk-like' appearance. This wool is a Wool Rich Blend.

On the Mercerised Merino wool will be digital print wool.

Digital print wool, creates a photographic imagery on the fabric. This is environmentally friendly and the excess dye is recycled. With digital printing it has more flexibility in the design. This is a Wool Rich Blend.

Cool wool (woven) is breathable and lightweight. This wool is ideal for warmer climates, transitional seasons and global travel. The cool wool is going as an underlay, under the green tulle. This is a Wool Rich Blend.

Inspired by the barn owl

Garment 1

Midi Dress

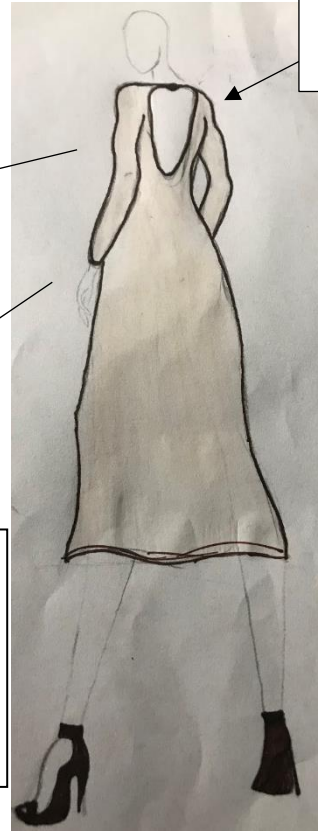
Dress
Woolmark logo:



WOOL RICH BLEND

This dress is constructed using terry loop jersey with 100% Merino wool.

Terry loop jersey wool makes clothes warm without weight, unique aesthetic (100% soft and breathable Merino wool), enhanced insulation and naturally breathable.



Bare/owl shaped head back neckline

Garment 2

Owl pattern Kimono Jacket

Knit Jacket

Wing pattern of wool

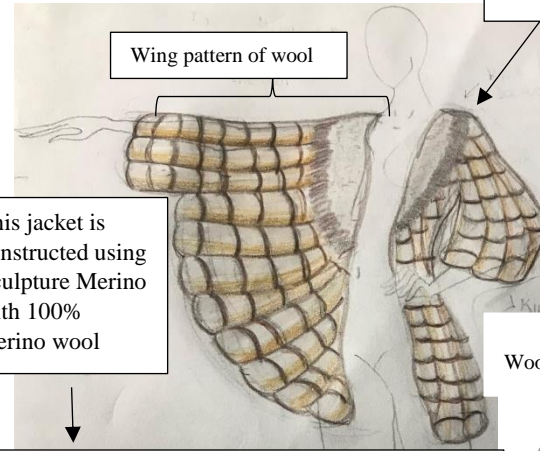
This jacket is constructed using Sculpture Merino with 100% merino wool

Sculpture Merino wool creates natural creases all over knitwear for a relaxed casual look. A technique has been developed which creates natural creases all over a garment giving a unique look to worsted-spun easy care knitwear. Each garment using would be unique.

Jacket
Woolmark logo:



PURE NEW WOOL



Full Outfit



Wool innovations

The relaxed silhouette combined with this slightly stretchy knit allows for a comfortable and lightweight garment that has been finished to be machine washable. This is why the terry loop jersey was used to make the dress (cute, comfortable, breathable and light).

Wool innovations

The Sculpture merino was chosen for the Jacket because it is meant to look casual and comfortable. There are two types of crease in textiles, accidental and deliberate which makes it unique.

Inspiration photo



Inspired by Jellyfish

Outfit Pieces: Headdress, Arm pieces, Dress, High heels

The head piece is made up of 100% merino felt wool. To maintain it's shape, the felt it covering a layer of hard Latex Rubber. The hat shape is made to look like a jellyfish that is being viewed from above.



PURE NEW WOOL

The back strapping is made of 90% Merino Wool and 10% spandex



WOOL RICH BLEND



PURE NEW WOOL

The skirt and the bodice of the dress is made up of a wool rich blend. It is 90% merino wool and 10% spandex allowing for it to stretch. The stretch of the spandex allows for the skirt to drape easily over a hoop that is forming the shape of the shirt.



WOOL RICH BLEND

The fabric of the bodice has been dyed to create an ombre effect. The straps coming of the dress have been created using tightly knitted wool blends. They too represent the tentacles of a jellyfish.

The shirt of the dress is shaped to look like the body of a Jellyfish. There is a hoop on the inside of the skirt allowing to stay in shape.



WOOL RICH BLEND

The high heels straps and shoe is made of a tightly woven wool. They are lined with a layer of mercerised merino allowing them not to feel scratchy on the foot. The straps help to represent the tentacles of a jellyfish.

'Tentacles' coming of the dress, head piece and arm pieces are made up of 100% knitted merino wool

Innovations

- Pure New Wool- Mercerised Merino
- Cashmere and silk like texture
- Improved confront next to skin
- Easy to be knitted and spun

Innovations

- Pure New Wool- 90% Merino wool 10 % Spandex
- Does not crease easily
- Machine Washable
- Soft to handle

Outfit Inspiration





Wind and water resistant jacket.

Made from 100% Merino Wool.

Hood to represent the larger upper body of a dolphin.

Water resistant to represent the dolphin's water resistant skin.

Uses OPTIM™ spinning techniques



Blue and white sleeves. The sleeves have a sharp blue triangle on the end to represent dolphin fins.

This is a lightweight, warm, yet breathable outfit for exercising in cool weather.

The two garments represent the shape, colours and certain qualities of a dolphin.



Lining inside of the jacket made with Merino Air wool.

It is a pure wool knitwear yarn, which provides warmth in a lightweight garment.



Merino Wool white runners. (80% Merino Wool/20% APL's patented, stretch-rebound TechLoom upper).



Bell bottom, tight tracksuit pants, which flare at the bottom to represent a dolphin tale. They are made with Soft Classic Merino knitwear and yarns and have spandex in them to allow stretch. (90% wool/10% spandex)



Innovation: Track pants

Soft Classic Merino

This wool is fine Merino wool yarns and knitwear that has a natural softness and brightness.

Soft and comfortable

Shine like water on a dolphin's back.

The wool has qualities such:

- hand-washable and in some cases machine washable making them well suited for exercise due to sweat.
- Brighter shades due to the dyestuffs being well absorbed into the fibre.

Innovation: Jacket

Wind and water resistant wool

The Optim™ spinning techniques are used to create the qualities of this wool such as:

- Wind resistant.
- Water resistant
- Very suitable for exercise, especially in the winter or on colder days.
- Naturally durable, due to it not having any synthetic fibres.
- Machine washable.
- Wrinkle resistant.

Innovation: Runners

Extremely suitable for active lifestyles.

The runners have many qualities such as:

- Superior comfort, due to its fully-fashioned knitting technology.
- Moisture wicking
- Keep your feet warm when cold and cold when warm.
- Odour resistant and can absorb moisture vapour meaning less sweat.
- Can be worn without socks, due to their breathable sole and the wool's natural breathability.

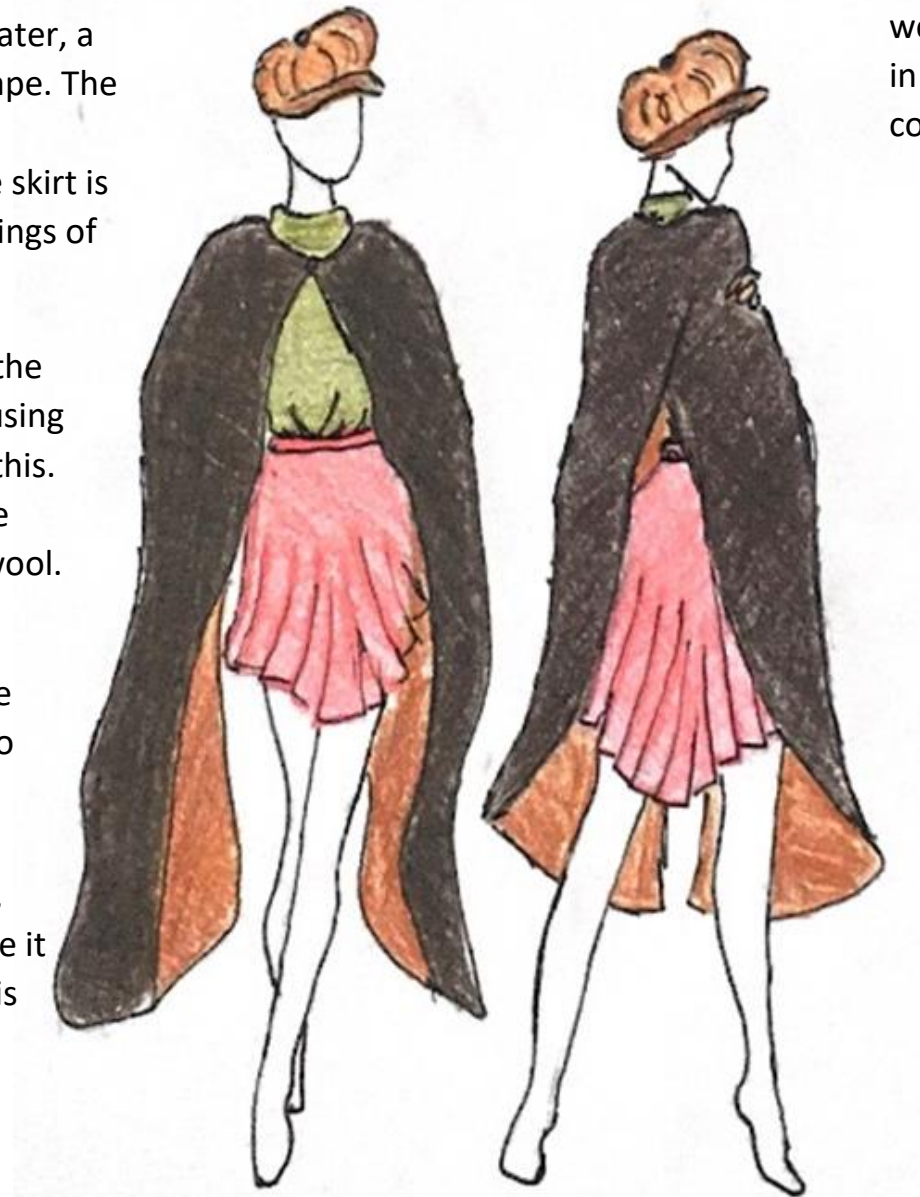
Emily Cox 9/K4

My Outfit is inspired by Wattle birds and Eucalyptus (gum) trees, and their flowers & gum nuts/seeds. It is made up of four garments; a woollen jumper/sweater, a hat, a pleated skirt and a cloak/cape. The hat represents a gum nut, the jumper/sweater is the leaves, the skirt is the flowers and the cape is the wings of the Wattle bird.

The cape is double layered, with the outside being weather resistant using Optim™ technologies to achieve this. The inside of the cape is sculpture merino wool. It is 100% Merino wool.




The Jumper is 100% sculpture merino wool. The use of sculpture merino means it is very unlikely to unravel.

The skirt is made of Merino wool, using Optim™ technologies to give it a shiny, weather-proof finish. This skirt is 100% wool.



The hat is also made of Merino wool using Optim™ technologies, so it is weatherproof and can be worn in rain. The inside is lined with cotton, so it is 70% wool.

WoolMark Logos:

Hat	 WOOL RICH BLEND
Jumper	 PURE NEW WOOL
Skirt	 PURE NEW WOOL
Cloak	 PURE NEW WOOL

Sculpture merino jumper/sweater in a soft, light green colour. The sculpture merino wool used in the sweater means it will not unravel easily.



PURE NEW WOOL

Outer layer of the bird wing cloak. It is made of weather resistant merino wool using Optim technologies, meaning it can be safely worn in the elements.



PURE NEW WOOL



Merino wool cap made using Optim technologies, internally lined with cotton.



WOOL RICH BLEND

Merino wool skirt, using Optim technologies to give it a shiny, weatherproof finish.



PURE NEW WOOL

Inner layer of the bird wing cloak. Made of sculpture merino wool, meaning it is unlikely to unravel and has a sophisticated look.



PURE NEW WOOL